



## Buckingham Mansions, West Hampstead, London, NW6 | £1,325

- Double Volume Reception
- Communal Gardens
- Wooden Floors
- Balcony
- Onsite Management
- Eat In Kitchen
- Council tax - F - £1914 per annum

"Vita Properties have been tremendously helpful throughout the process of securing/renting my flat. Informative about the property, prompt communication, easy to use dashboard for sharing of information, and pleasant to work with. Highly recommend!"

Available 01 November 2023 is this newly decorated and updated four bedroom apartment (approx 2000 sq ft), situated on the first floor of this impressive, sought after mansion building.

The property is presented with two large interconnecting reception rooms, a well appointed kitchen/breakfast room (separate washing and drying machines) and benefits from an abundance of natural light, guest WC, fantastic storage, 2 beautifully modernised shower rooms as well as excellent views over the communal gardens from the principal bedrooms.






Buckingham Mansions is located within easy walking distance of West End Lane as well as being a short distance from either West Hampstead or Finchley Road underground stations.



Saira Ishfaq

✉ [saira@vitaproperties.uk](mailto:saira@vitaproperties.uk)  
☎ +4475 5575 4510



	Flat
	Let STC
	x 4
	x 2
	x 2



"I was very impressed with Vita and their network of buyers. When the sale of my flat fell through (twice) they worked extremely hard to find new buyers in a difficult market - thank you!"

---



"Working with Vita properties has been a smooth experience! No complaints at all. Our letting agent, Diana has been fantastic and very helpful throughout the whole process. I would highly recommend both Vita properties and Diana."

---



"I used Vita properties to find a flat recently and it was an overall professional, personalised and positive experience. Saira went the extra mile to accommodate to our needs and quick to help us whenever possible."

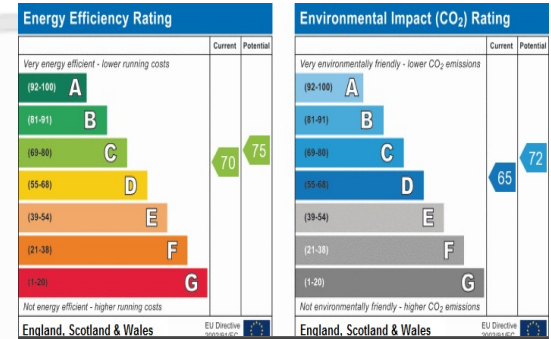
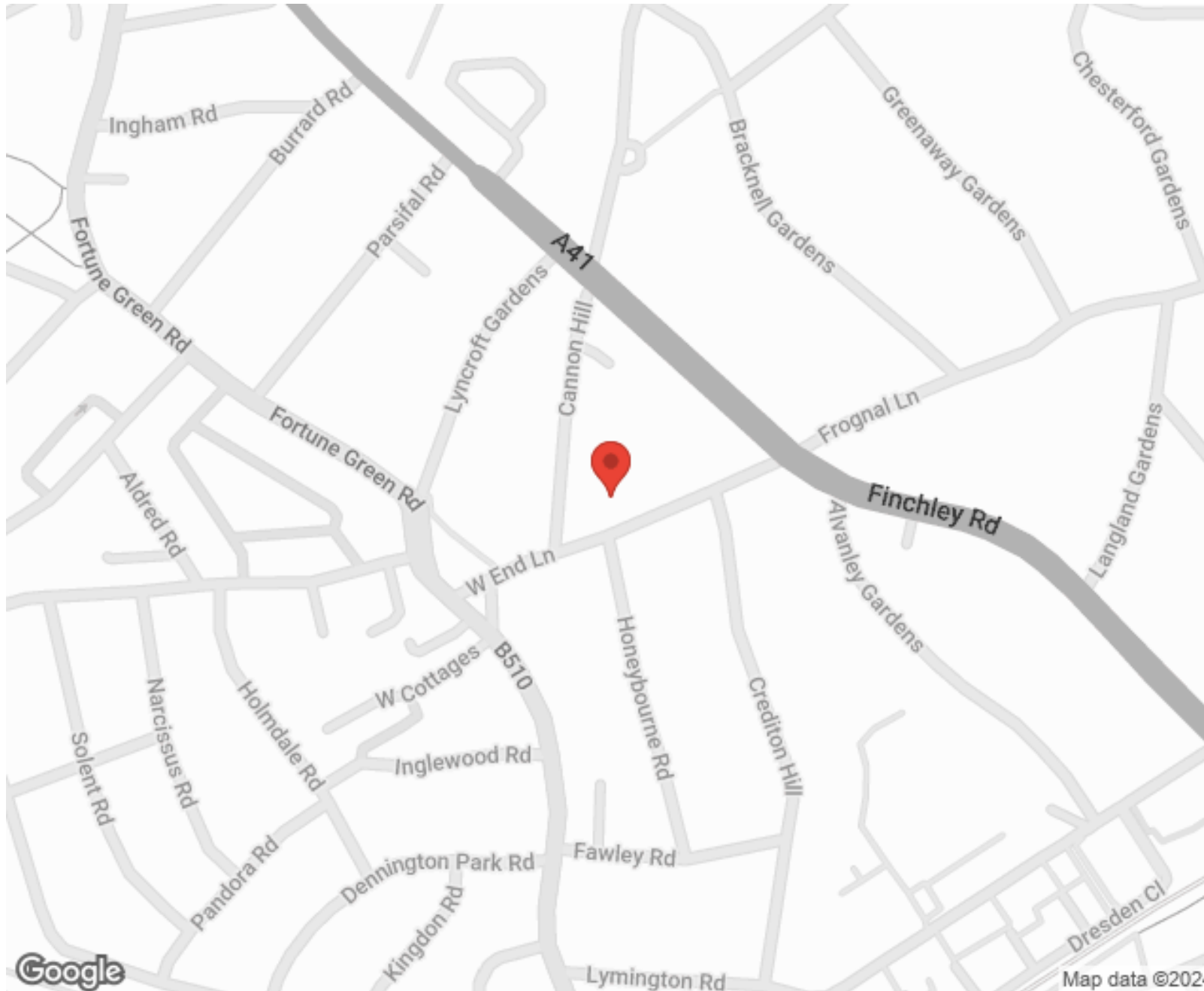
---



**MORE INFO, PICTURES,  
CONTACT ON  
OUR WEBSITE**



"Vita Properties is a very professional agency. My experience with them was incredible and the entire team was very helpful and kind throughout the renting process. I'd highly recommend!"



SCAN FOR MORE  
GOOGLE REVIEWS



Google

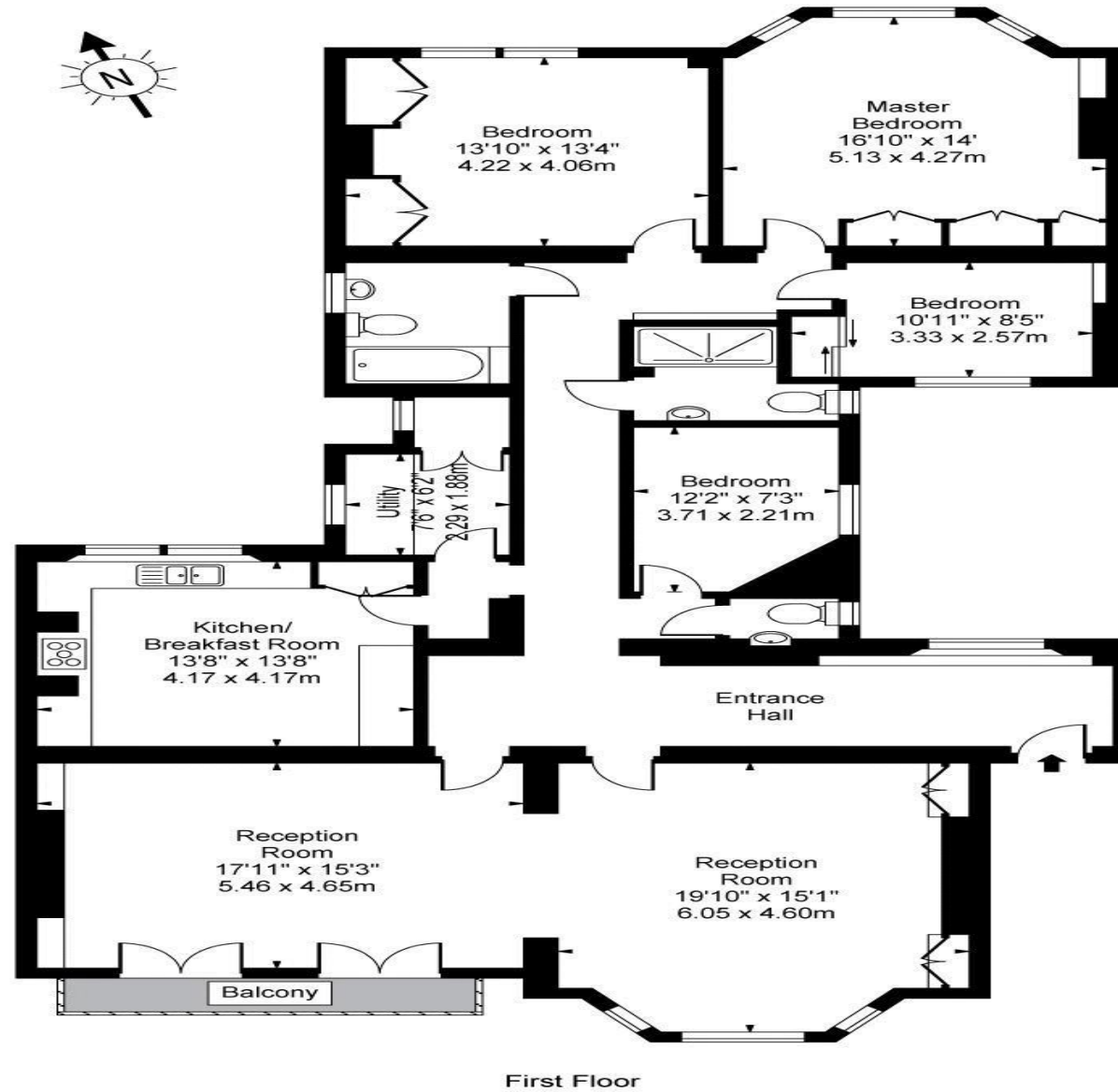


4.9 Stars | 132 Reviews

Find us on social media

- vitaproperties
- VitaProperties
- VitaProperties

# Buckingham Mansions, West End Lane, NW6



**Approx Gross Internal Area 2005 Sq Ft - 186.26 Sq M**

For Illustration Purposes Only - Not To Scale Floor Plan by [www.nogaphotostudio.com](http://www.nogaphotostudio.com) Ref: No.8577

This floor plan should be used as a general outline for guidance only. Any intending purchaser or lessee should satisfy themselves by inspection, searches, enquiries and full survey as to the correctness of each statement. Any areas, measurements or distances quoted are approximate and should not be used to value a property or be the basis of any sale or let.