



Dene Mansions, Kingdon Road, West Hampstead, NW6 .| £1,000,000

- Heart of West Hampstead
- Three double bedrooms
- High ceilings
- Abundance of natural light

- First floor
- SHARE OF FREEHOLD

"Vita Properties have been tremendously helpful throughout the process of securing/renting my flat. Informative about the property, prompt communication, easy to use dashboard for sharing of information, and pleasant to work with. Highly recommend!"

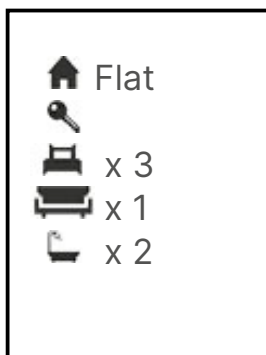
Located within the Heart of West Hampstead, ideally placed period mansion block is this beautiful three double bedroom apartment. The property comprises of just over 1200 sqft and is set on the first floor, offers fantastic living space boasting a large reception, an eat in fully fitted kitchen/diner, two bathrooms and access to communal gardens. This stunning apartment also boasts high ceilings and has an abundance of natural light. SHARE OF FREEHOLD. The development is within minutes walking distance to West Hampstead village offering a variety of popular shops, restaurants and coffee bars. Transportation links include West Hampstead tube station (Jubilee Line) West Hampstead (Overground) and West Hampstead (Thames Link).

Viewings are highly recommended



Oliver Kent

✉ oliver.kent@vitaproperties.uk
☎ +4477 7274 0351



"I was very impressed with Vita and their network of buyers. When the sale of my flat fell through (twice) they worked extremely hard to find new buyers in a difficult market - thank you!"



"Working with Vita properties has been a smooth experience! No complaints at all. Our letting agent, Diana has been fantastic and very helpful throughout the whole process. I would highly recommend both Vita properties and Diana."



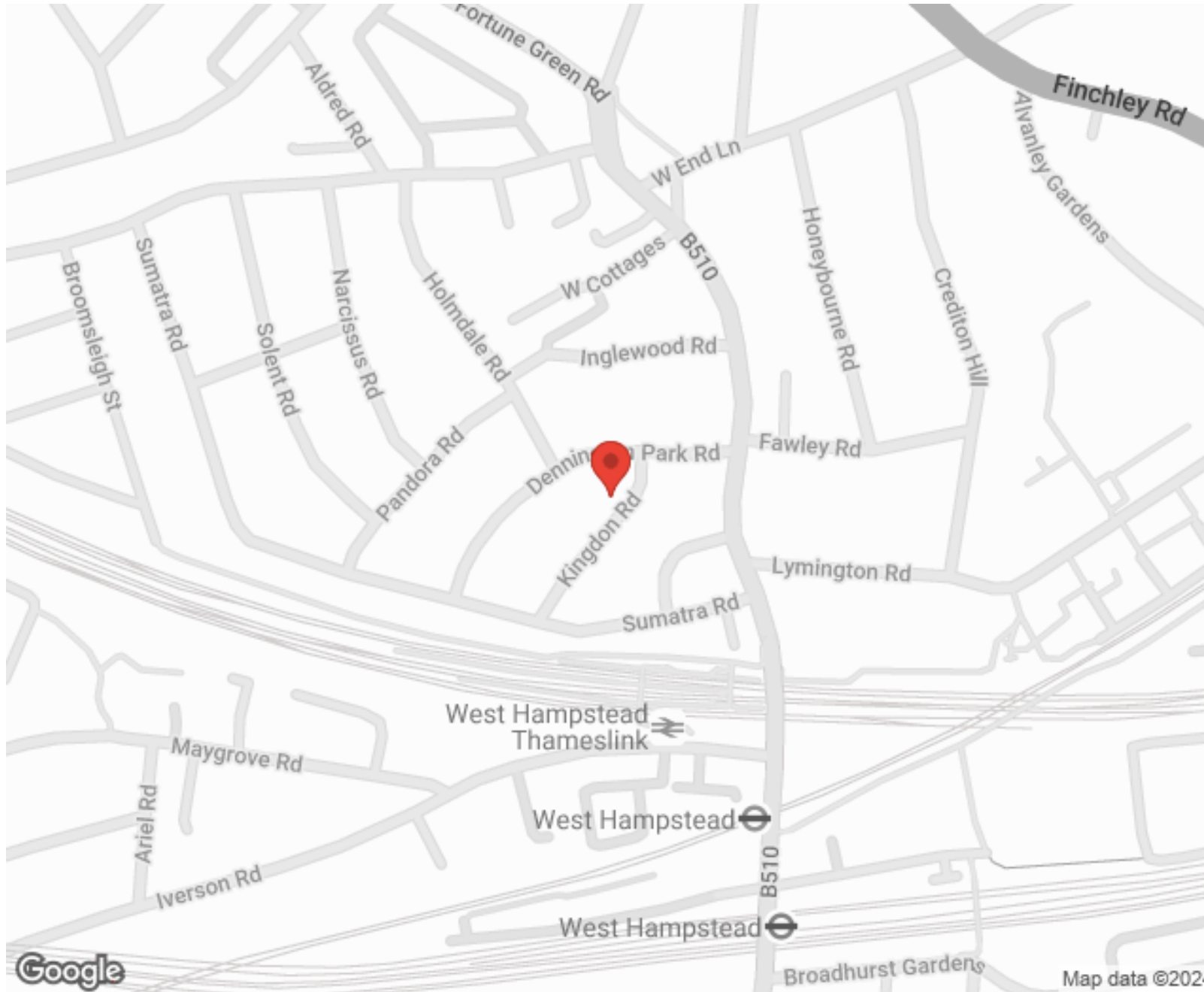
"I used Vita properties to find a flat recently and it was an overall professional, personalised and positive experience. Saira went the extra mile to accommodate to our needs and quick to help us whenever possible."



**MORE INFO, PICTURES,
CONTACT ON
OUR WEBSITE**



"Vita Properties is a very professional agency. My experience with them was incredible and the entire team was very helpful and kind throughout the renting process. I'd highly recommend!"



SCAN FOR MORE
GOOGLE REVIEWS




Google




4.9 Stars | 132 Reviews

Find us on social media

 vitaproperties

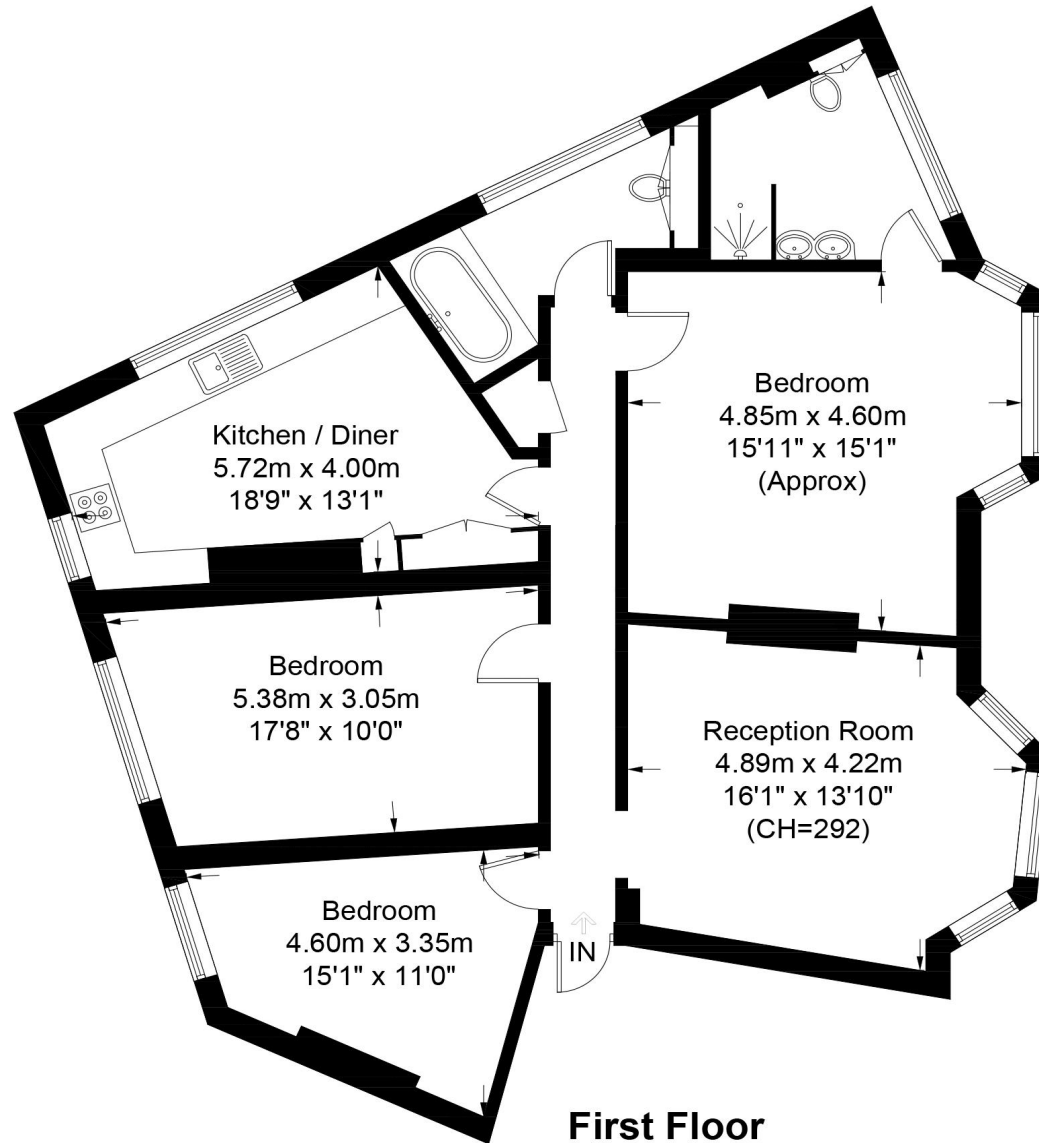
 VitaProperties

 VitaProperties



Dene Mansions

Approximate Gross Internal Area = 1204 sq ft / 110.4 sq m



This plan is for layout guidance only. Not drawn to scale unless stated. Windows and door openings are approximate. Whilst every care is taken in the preparation of this plan, please check all dimensions, shapes and compass bearings before making any decisions reliant upon them. (ID568482)