



Exeter Mansions Exeter Road, Mapesbury, London, NW2 .| £615,000

- Two double bedrooms
- Spacious lounge/diner
- Modern kitchen
- Mansion block

- High ceilings
- Original features
- Superb location

"Vita Properties have been tremendously helpful throughout the process of securing/renting my flat. Informative about the property, prompt communication, easy to use dashboard for sharing of information, and pleasant to work with. Highly recommend!"

Superb opportunity to acquire this beautifully presented FIRST FLOOR apartment situated within the highly sought after Mapesbury Conservation Area, set within this well maintained MANSION BLOCK offering 882sq ft of lateral space, The apartment comprises of: Modern fitted kitchen with tiled splashbacks, Spacious lounge-diner with oak flooring and access leading out onto large balcony, two equally large double bedrooms with fitted wardrobes "Master bedroom benefits from access onto balcony", tastefully tiled three piece bathroom. Further benefits include: Many original features to include fireplaces, high ceilings, New double glazed acoustic windows/doors throughout. Situated moments away from Kilburn (Jubilee) station & Brondesbury Overground Stations (Zone 2) and close to a variety of local shops, restaurants & cafes.



Oliver Kent

✉ oliver.kent@vitaproperties.uk

☎ +4477 7274 0351



"I was very impressed with Vita and their network of buyers. When the sale of my flat fell through (twice) they worked extremely hard to find new buyers in a difficult market - thank you!"



"Working with Vita properties has been a smooth experience! No complaints at all. Our letting agent, Diana has been fantastic and very helpful throughout the whole process. I would highly recommend both Vita properties and Diana."



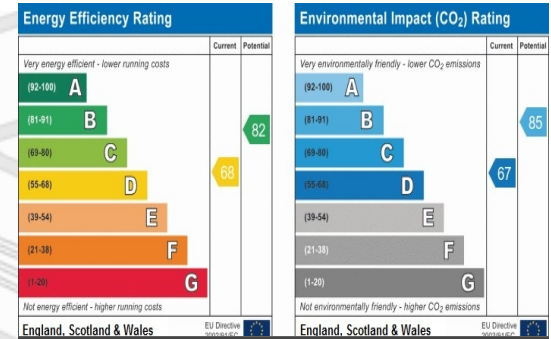
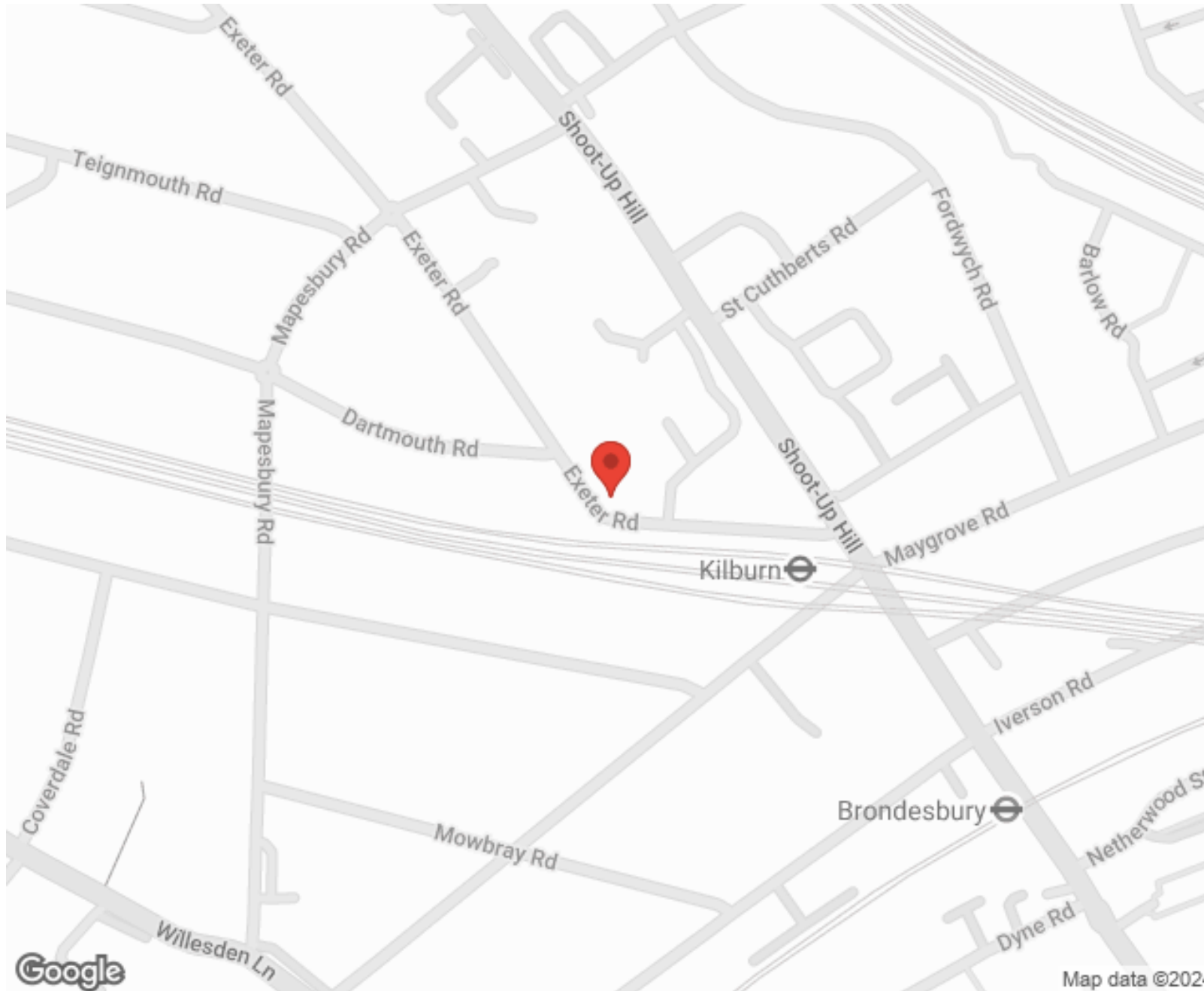
"I used Vita properties to find a flat recently and it was an overall professional, personalised and positive experience. Saira went the extra mile to accommodate to our needs and quick to help us whenever possible."



**MORE INFO, PICTURES,
CONTACT ON
OUR WEBSITE**



"Vita Properties is a very professional agency. My experience with them was incredible and the entire team was very helpful and kind throughout the renting process. I'd highly recommend!"



SCAN FOR MORE
GOOGLE REVIEWS






Google



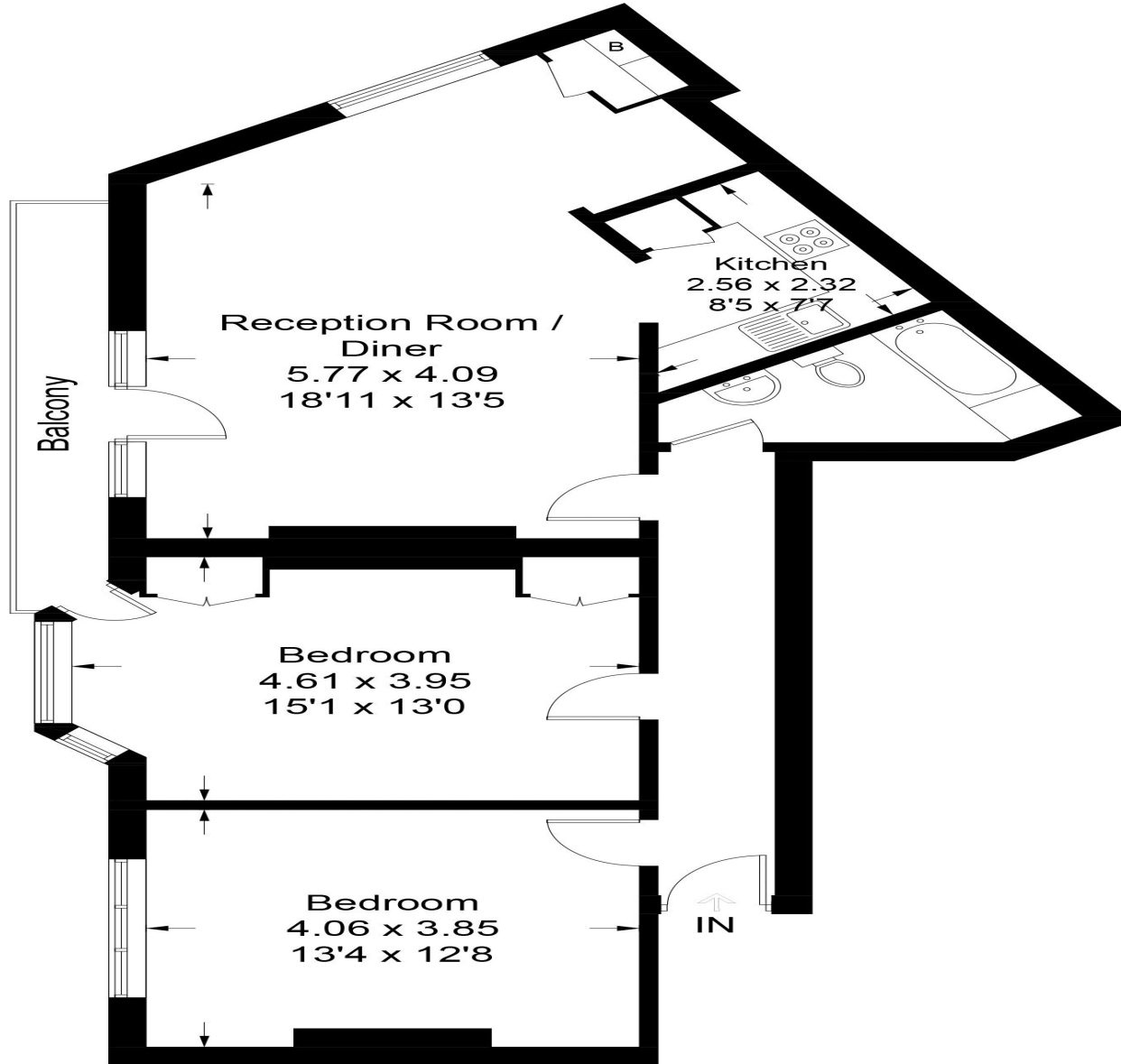
4.9 Stars | 132 Reviews

Find us on social media

-  vitaproperties
-  VitaProperties
-  VitaProperties

10A Exeter Mansions

Approximate Gross Internal Area = 82.3 sq m / 886 sq ft



First Floor

Illustration for identification purposes only, measurements are approximate, not to scale. floorplansUsketch.com © (ID566464)