



Bracknell Gardens, Hampstead, London, NW3 .| £550

- 2 Bathrooms
- Large Living Room with Wooden Floors
- 1st Floor
- Offered Unfurnished

- Bright and Spacious
- Available Mid May

"Vita Properties have been tremendously helpful throughout the process of securing/renting my flat. Informative about the property, prompt communication, easy to use dashboard for sharing of information, and pleasant to work with. Highly recommend!"

Available immediately - Vita Properties are delighted to offer this stunning two double bedroom two bathroom apartment located on the beautiful tree lined Bracknell Gardens. The kitchen and bathrooms provide contemporary living having been recently refurbished and the reception boasts beautiful wood floors. Offered unfurnished. Additionally the flat boasts brand new carpets to both bedrooms and hallway. The flat is conveniently located for both tubes being Hampstead (Northern line) and Finchley Road (Jubilee Line) along with many amenities in Hampstead Village and on the Finchley Road.



Oliver Kent

✉ oliver.kent@vitaproperties.uk
☎ +4477 7274 0351



	Flat
	Under Negotiation
	x 2
	x 1
	x 2

"I was very impressed with Vita and their network of buyers. When the sale of my flat fell through (twice) they worked extremely hard to find new buyers in a difficult market - thank you!"



"Working with Vita properties has been a smooth experience! No complaints at all. Our letting agent, Diana has been fantastic and very helpful throughout the whole process. I would highly recommend both Vita properties and Diana."



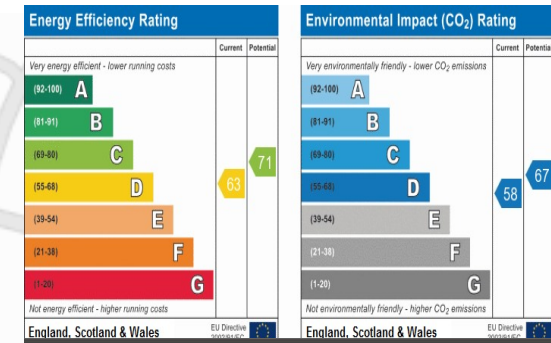
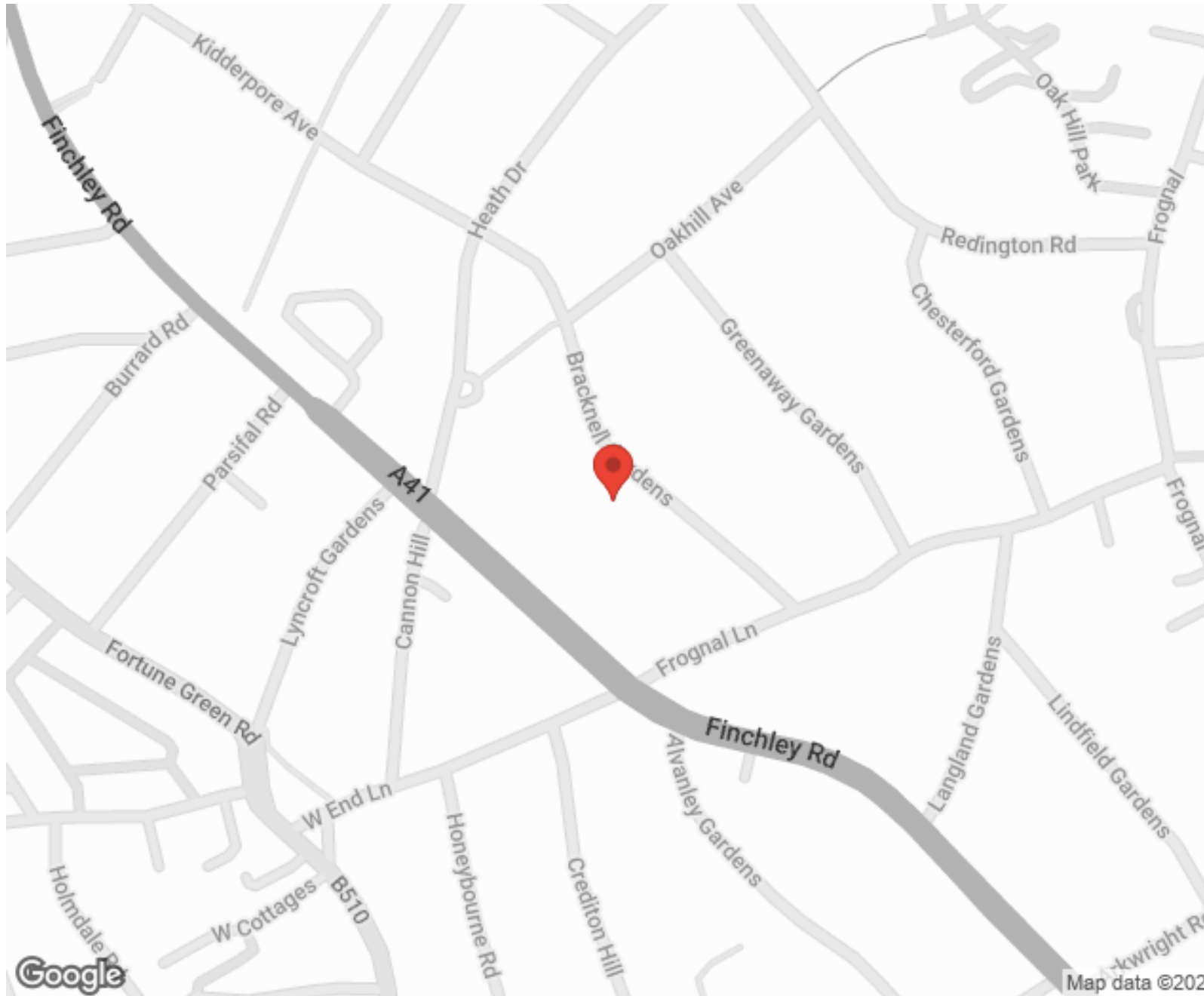
"I used Vita properties to find a flat recently and it was an overall professional, personalised and positive experience. Saira went the extra mile to accommodate to our needs and quick to help us whenever possible."



**MORE INFO, PICTURES,
CONTACT ON
OUR WEBSITE**



"Vita Properties is a very professional agency. My experience with them was incredible and the entire team was very helpful and kind throughout the renting process. I'd highly recommend!"



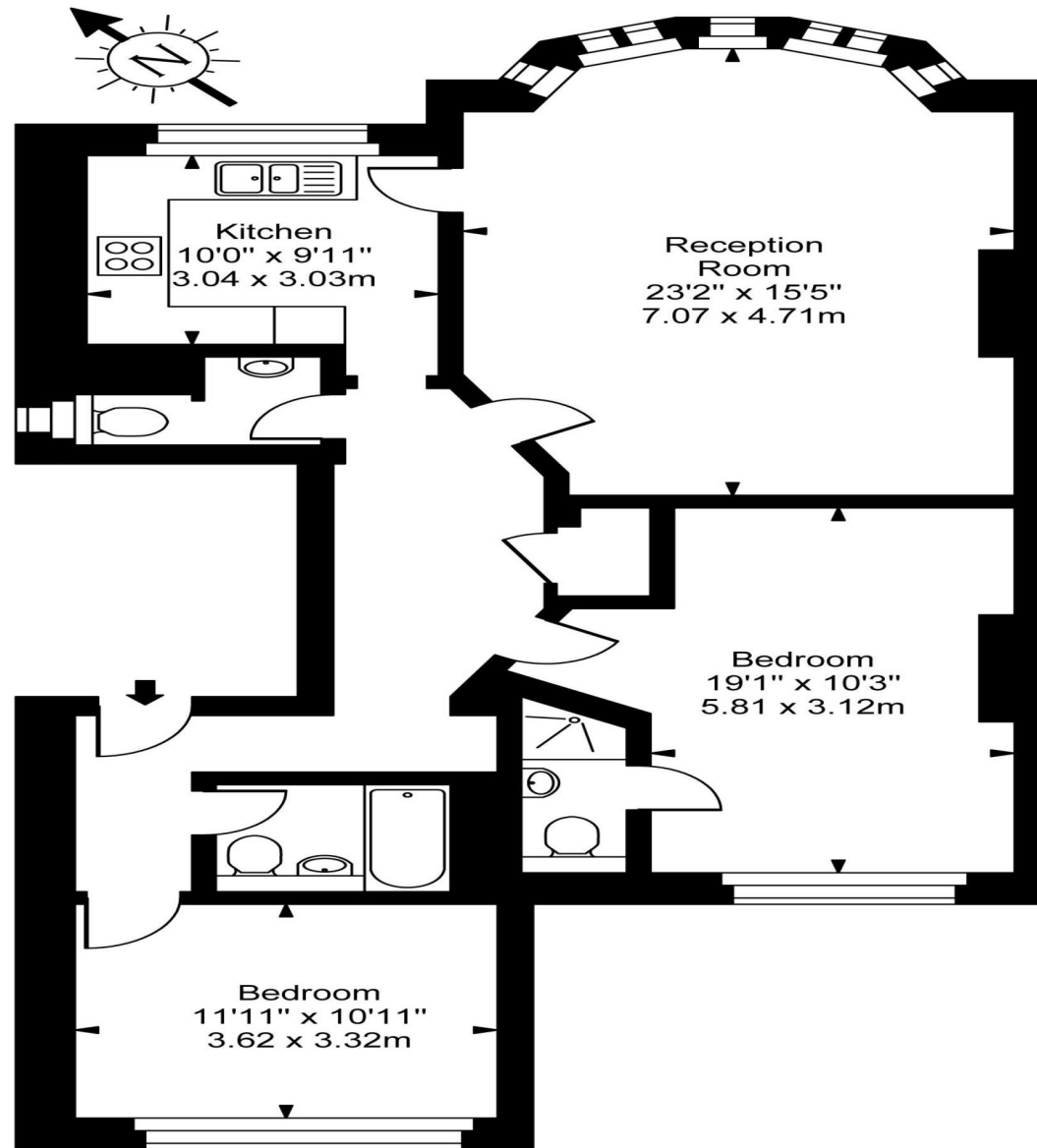
SCAN FOR MORE GOOGLE REVIEWS

Google
★★★★★
4.9 Stars | 132 Reviews

Find us on social media

- vitaproperties
- VitaProperties
- VitaProperties

Bracknell Gardens



First Floor

Approx Gross Internal Area **1090 Sq Ft - 101.27 Sq M**

For Illustration Purposes Only - Not To Scale
Floor plan by www.creativeplanettk.com