



Ingram Road, East Finchley, London, N2 .| £1,295,000

- Beautifully refurbished with eye for detail
- Eat in kitchen
- Double volume reception
- Four double bedrooms - Three bathrooms

- Brand new double glazed windows throughout
- Chain free

"Vita Properties have been tremendously helpful throughout the process of securing/renting my flat. Informative about the property, prompt communication, easy to use dashboard for sharing of information, and pleasant to work with. Highly recommend!"

A beautifully presented 2000 sq ft four double bedroom house which has been fully refurbished - including brand-new double-glazed windows throughout.

Set across three floors you have a large reception on the ground floor, with trendy exposed brick wall and feature fireplace, a large kitchen diner/ second reception room with access onto the main west facing garden as well as the separate courtyard garden and guest WC. The first floor consists of three double bedrooms – one with en-suite and large family bathroom with jacuzzi bathtub. Upstairs is reserved exclusively for the master bedroom which boasts its own en-suite shower room.

This house benefits from bespoke wood flooring throughout the ground floor and soft carpet to the bedrooms, under-floor heating, ambient lighting, a cellar and a number of useful storage options.

Positioned within a few minutes' walk from East Finchley tube station (Northern Line) and within walking distance to Cherry Tree Woods which provides a nice escape from City life



Oliver Kent

✉ oliver.kent@vitaproperties.uk
☎ +4477 7274 0351



"I was very impressed with Vita and their network of buyers. When the sale of my flat fell through (twice) they worked extremely hard to find new buyers in a difficult market - thank you!"



"Working with Vita properties has been a smooth experience! No complaints at all. Our letting agent, Diana has been fantastic and very helpful throughout the whole process. I would highly recommend both Vita properties and Diana."



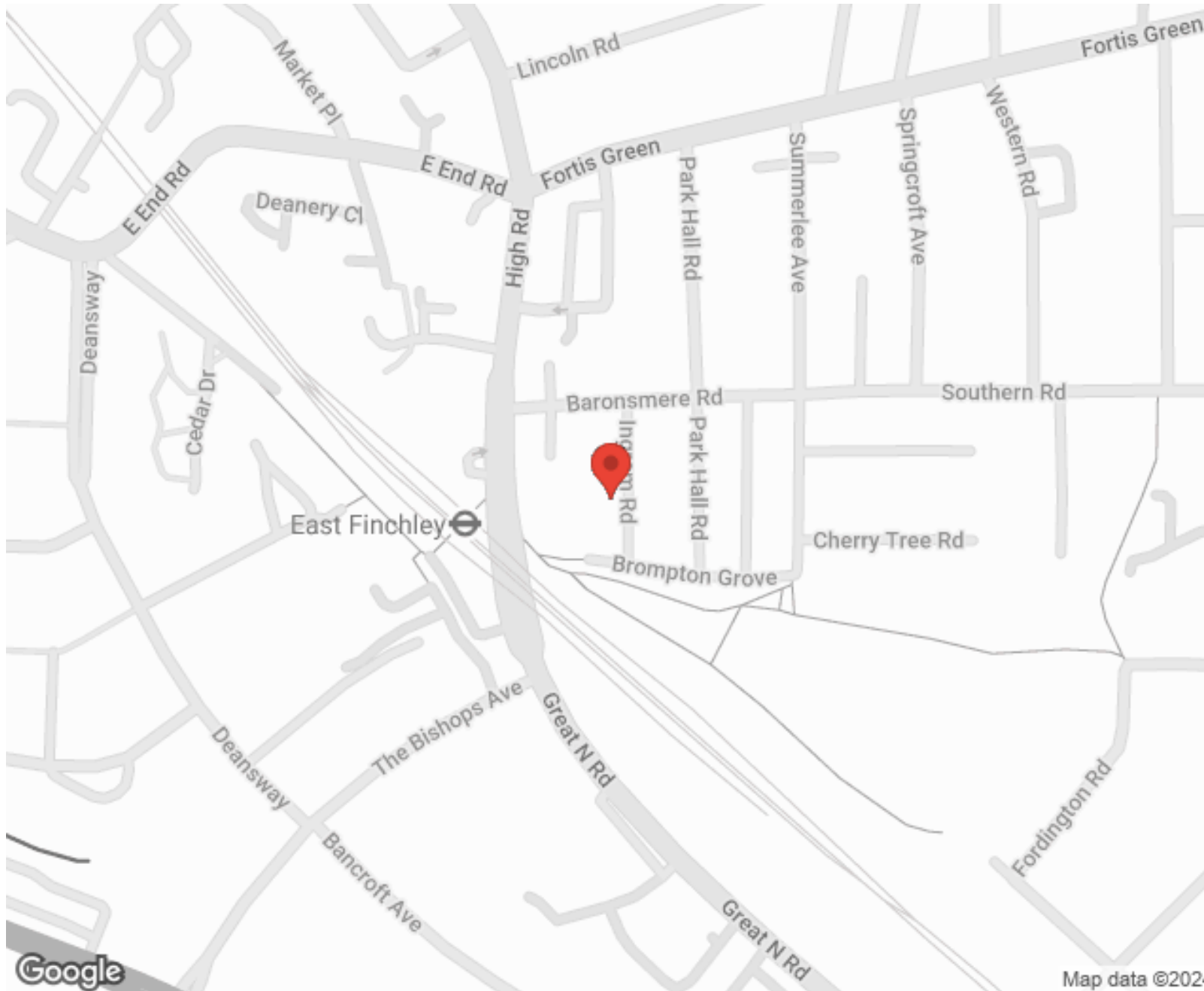
"I used Vita properties to find a flat recently and it was an overall professional, personalised and positive experience. Saira went the extra mile to accommodate to our needs and quick to help us whenever possible."



**MORE INFO, PICTURES,
CONTACT ON
OUR WEBSITE**



"Vita Properties is a very professional agency. My experience with them was incredible and the entire team was very helpful and kind throughout the renting process. I'd highly recommend!"



SCAN FOR MORE
GOOGLE REVIEWS




Google




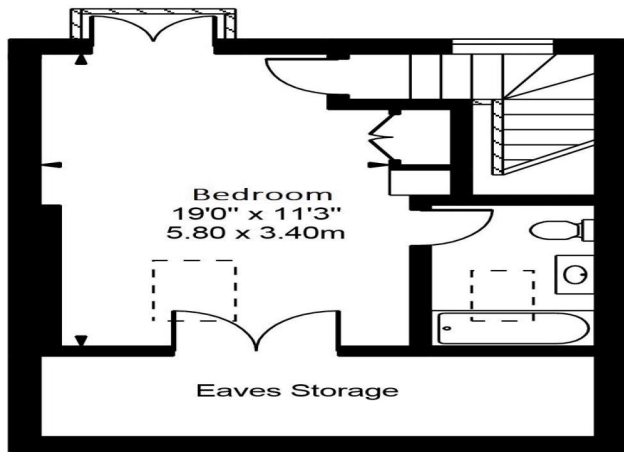
4.9 Stars | 132 Reviews

Find us on social media

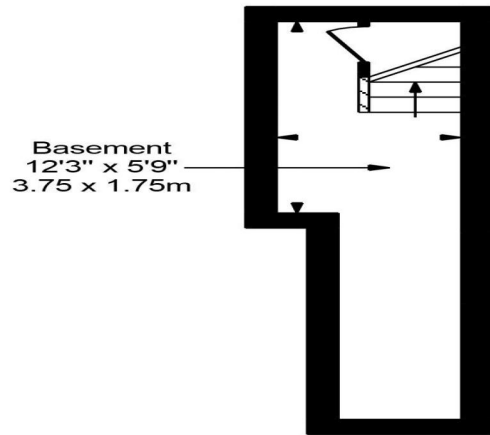
 vitaproperties

 VitaProperties

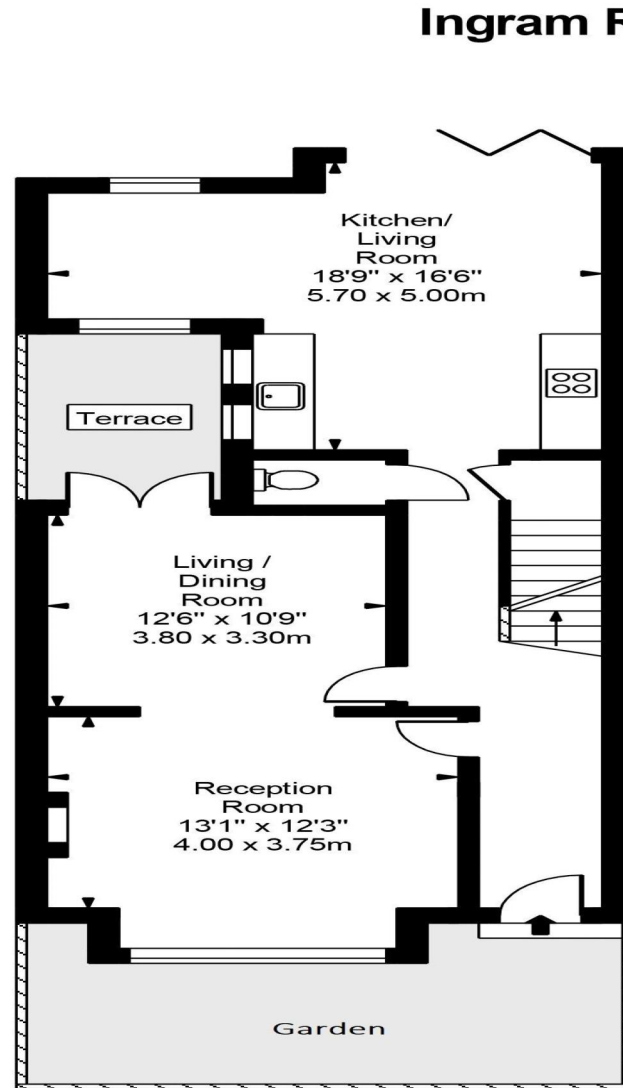
 VitaProperties



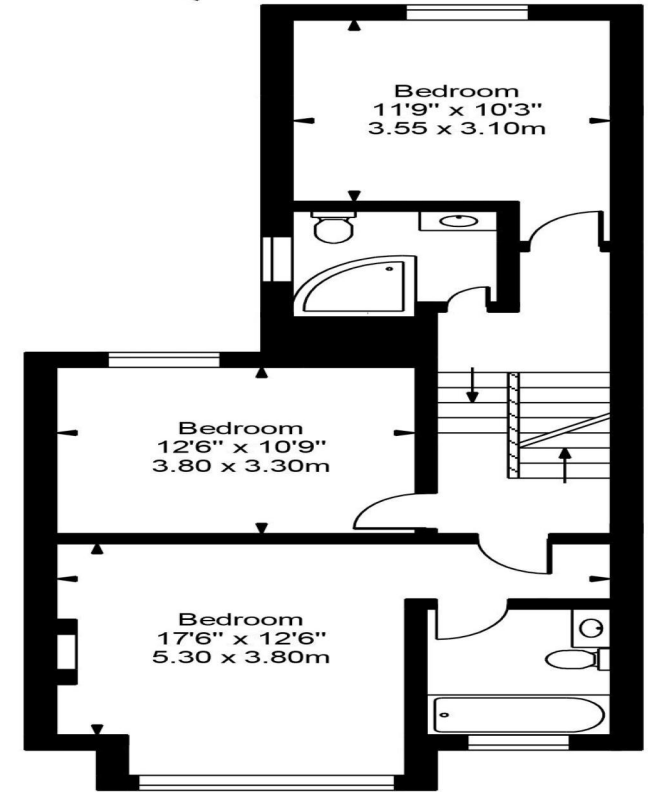
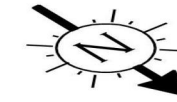
Top Floor



Basement



Ground Floor



First Floor

Approx Gross Internal Area 2038 Sq Ft - 189.29 Sq M

FOR ILLUSTRATIVE PURPOSES ONLY. NOT TO SCALE.

Whilst every attempt has been made to ensure the accuracy of the floorplan shown, all measurements, positioning, fixtures, fittings and any other data shown are an approximate interpretation for illustrative purposes only and are not to scale. No responsibility is taken for any error, omission, misstatement or use of data shown.
Floor plan by www.bestangle.co.uk

