



## Chappell Lofts, Belmont Street, Chalk Farm, London, NW1 .| £3,395


- Three Bedrooms
- Large Double Reception Room
- Incredible Bespoke Finishes
- Communal Pool/Bar Area

- 24 Hour Concierge Service
- Spectacular Club Lounge

"Vita Properties have been tremendously helpful throughout the process of securing/renting my flat. Informative about the property, prompt communication, easy to use dashboard for sharing of information, and pleasant to work with. Highly recommend!"

Set in the old Chappell Piano Factory built in 1866-67 and located on Belmont Street, off Chalk Farm Road, in the heart of London's vibrant Camden area, are a range of two and three bedroom loft apartments that form part of this stunning bespoke conversion. Located across the upper floors the loft apartments have been finished to an extremely high specification and benefit from retained period features, voluminous interiors, 12 ft high ceilings and large sash windows. The high specification includes custom designed Italian Scavolini kitchens with Bora and Miele integrated appliances, Duravit Philippe Starck bathroom suites with walk-in showers, Waterworks Taps, Devon & Devon freestanding bathtubs and underfloor heating. Finishing touches include Oak parquet flooring throughout, air conditioned bedrooms, cast iron feature radiators and columns, exposed beams, bespoke doors and custom made wardrobes, shelving and joinery.

This unique apartment set over 3045 sq ft on the second floor comprises of a master bedroom suite with en-suite bathroom and a bespoke dressing room and built in wardrobes, two further double bedrooms, one with an en-suite, and built-in wardrobes, double reception room with feature wood panelling and a large family kitchen and dining room. The property further benefits from a spectacular Club Lounge providing residents with a private VIP entertainment venue for relaxation and entertaining. Facilities include a club lounge, bespoke cocktail bar/dj booth, party/club sound/lighting system; 183 inch cinema screen, swimming pool, spa pool and gymnasium. Residents will also benefit from a 24 hour concierge service.

	Flat
	Available to Let
	x 3
	x 2
	x 2



Oliver Kent

 [oliver.kent@vitaproperties.uk](mailto:oliver.kent@vitaproperties.uk)  
 +4477 7274 0351



"I was very impressed with Vita and their network of buyers. When the sale of my flat fell through (twice) they worked extremely hard to find new buyers in a difficult market - thank you!"

---



"Working with Vita properties has been a smooth experience! No complaints at all. Our letting agent, Diana has been fantastic and very helpful throughout the whole process. I would highly recommend both Vita properties and Diana."

---



"I used Vita properties to find a flat recently and it was an overall professional, personalised and positive experience. Saira went the extra mile to accommodate to our needs and quick to help us whenever possible."

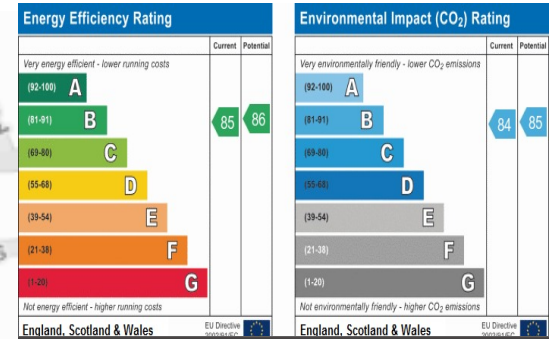
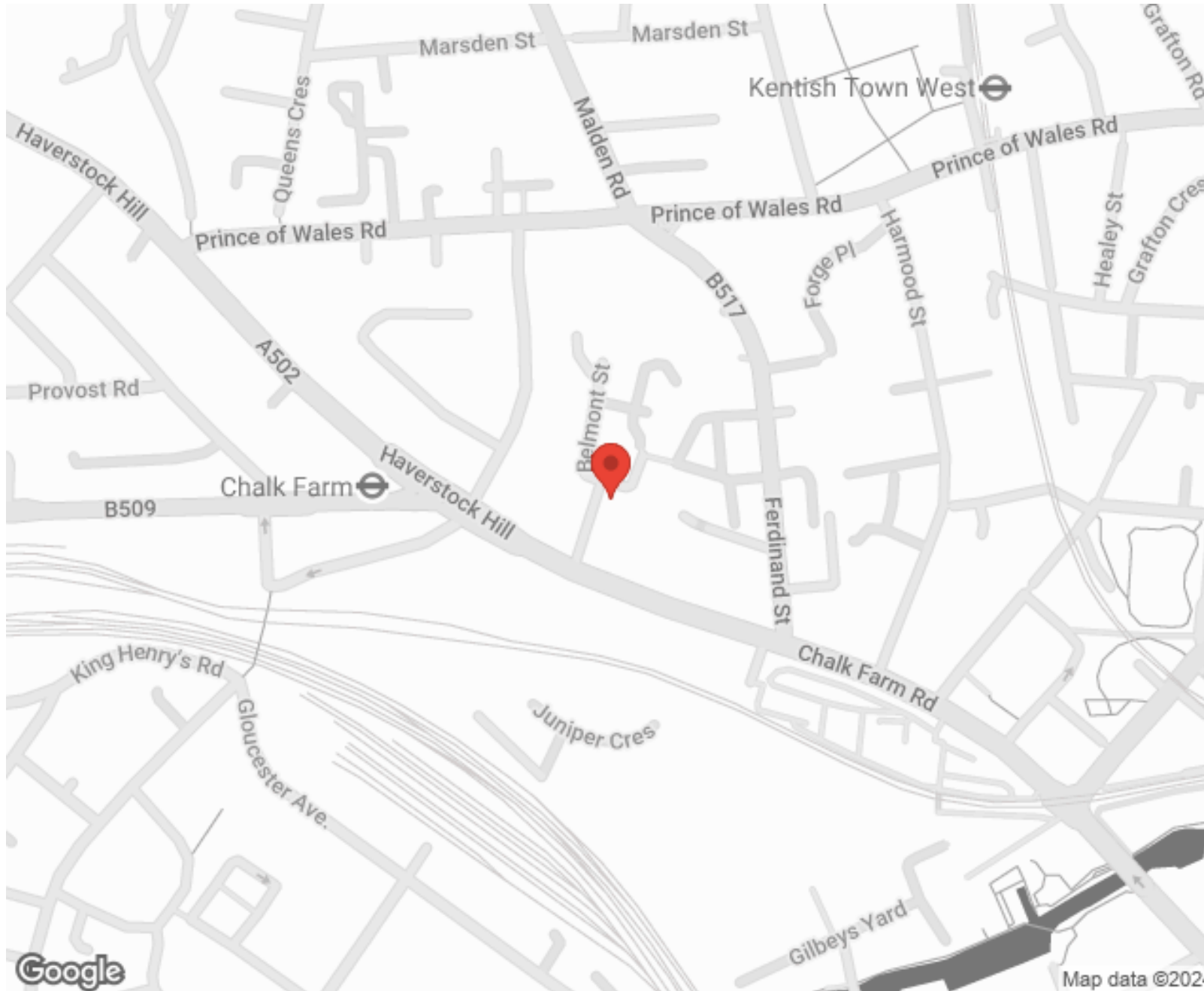
---



**MORE INFO, PICTURES,  
CONTACT ON  
OUR WEBSITE**



"Vita Properties is a very professional agency. My experience with them was incredible and the entire team was very helpful and kind throughout the renting process. I'd highly recommend!"



SCAN FOR MORE  
GOOGLE REVIEWS



Google

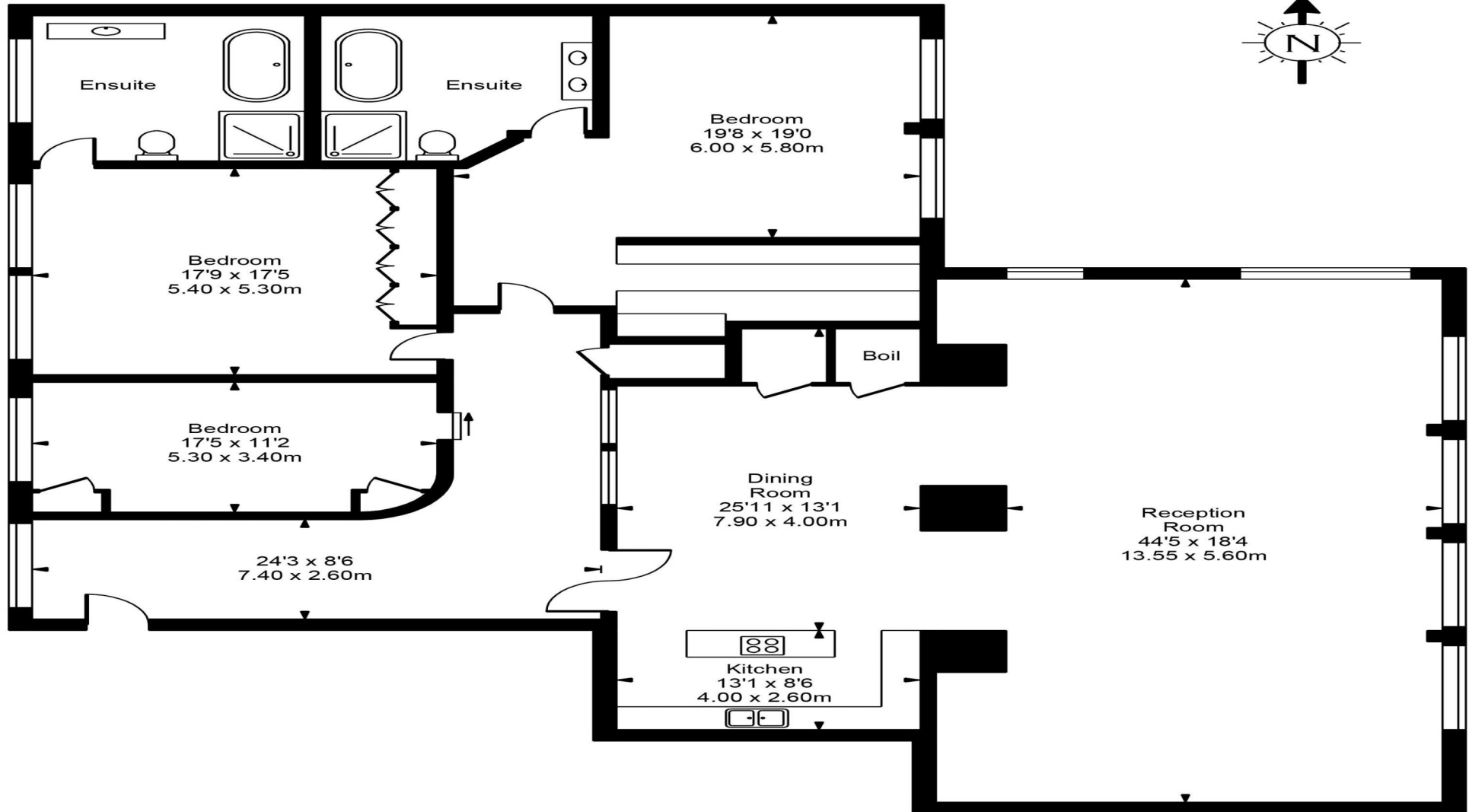
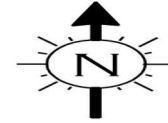


4.9 Stars | 132 Reviews

Find us on social media

- vitaproperties
- VitaProperties
- VitaProperties

# Chappell Lofts



## Second Floor

Approx Gross Internal Area **3045 Sq Ft - 282.88 Sq M**



FOR ILLUSTRATIVE PURPOSES ONLY. NOT TO SCALE.

Whilst every attempt has been made to ensure the accuracy of the floorplan shown, all measurements, positioning, fixtures, fittings and any other data shown are an approximate interpretation for illustrative purposes only and are not to scale. No responsibility is taken for any error, omission, misstatement or use of data shown. Floor plan by [www.bestangle.co.uk](http://www.bestangle.co.uk)