



Finchley Road, Hampstead, London, NW3 .| £395

- Modern
- Access to a Private Patio area & extensive communal gardens
- Wooden Floors
- Modern Bathroom

- Furnished
- Available 01st November

"Vita Properties have been tremendously helpful throughout the process of securing/renting my flat. Informative about the property, prompt communication, easy to use dashboard for sharing of information, and pleasant to work with. Highly recommend!"

Available 1st November - A modern one bedroom apartment situated on Finchley Road, NW3. The property comprises of an open-plan reception room/ kitchen with stunning hardwood floors, double bedroom with access to the communal terrace and a fully-tiled family bathroom.

Located just 10 minutes walk from Finchley Road Station (Jubilee and Metropolitan lines) and the overground train service from Finchley Road & Frognal. Ideally located for shops, restaurants and other essential amenities.



Oliver Kent

✉ oliver.kent@vitaproperties.uk

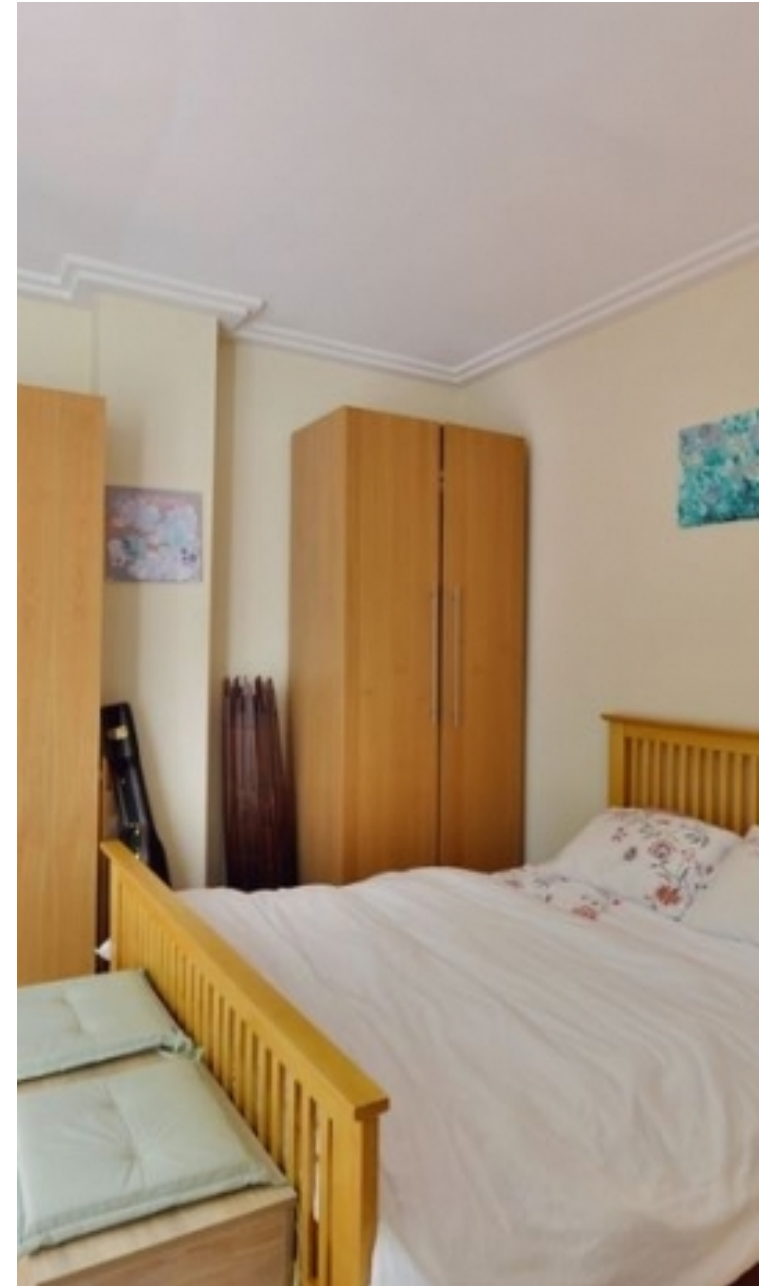
☎ +4477 7274 0351



🏠	Flat
🔑	Available to Let
🛏️	x 1
🛋️	x 1
🚿	x 1



"I was very impressed with Vita and their network of buyers. When the sale of my flat fell through (twice) they worked extremely hard to find new buyers in a difficult market - thank you!"



"Working with Vita properties has been a smooth experience! No complaints at all. Our letting agent, Diana has been fantastic and very helpful throughout the whole process. I would highly recommend both Vita properties and Diana."



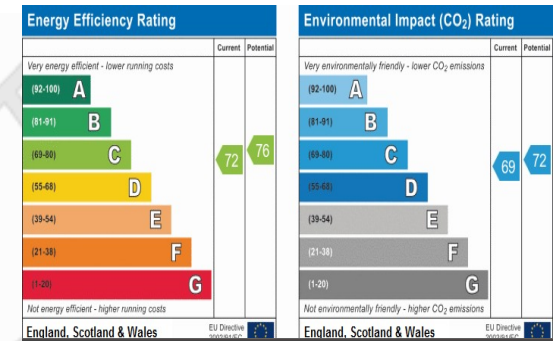
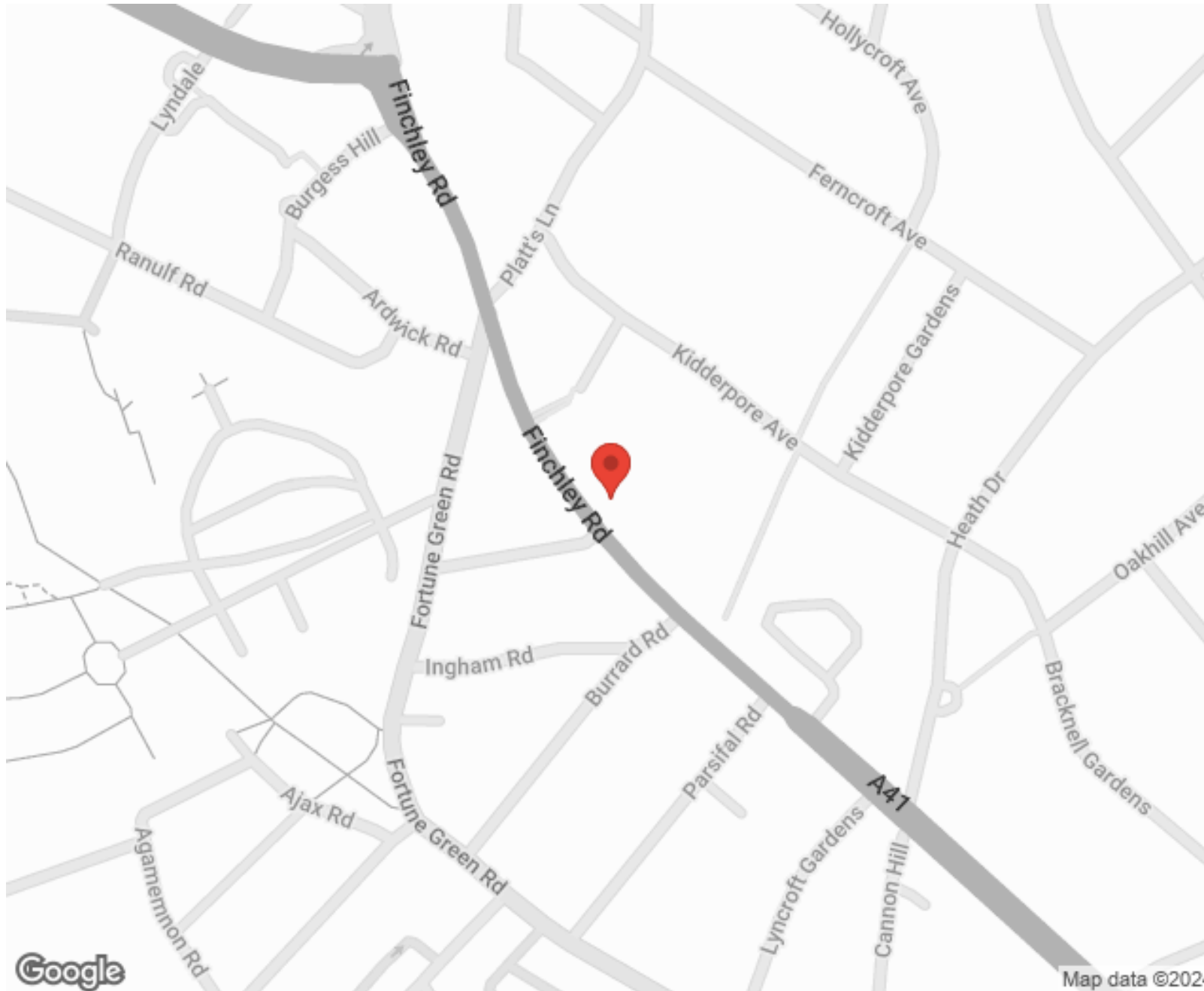
"I used Vita properties to find a flat recently and it was an overall professional, personalised and positive experience. Saira went the extra mile to accommodate to our needs and quick to help us whenever possible."



**MORE INFO, PICTURES,
CONTACT ON
OUR WEBSITE**



"Vita Properties is a very professional agency. My experience with them was incredible and the entire team was very helpful and kind throughout the renting process. I'd highly recommend!"



SCAN FOR MORE
GOOGLE REVIEWS



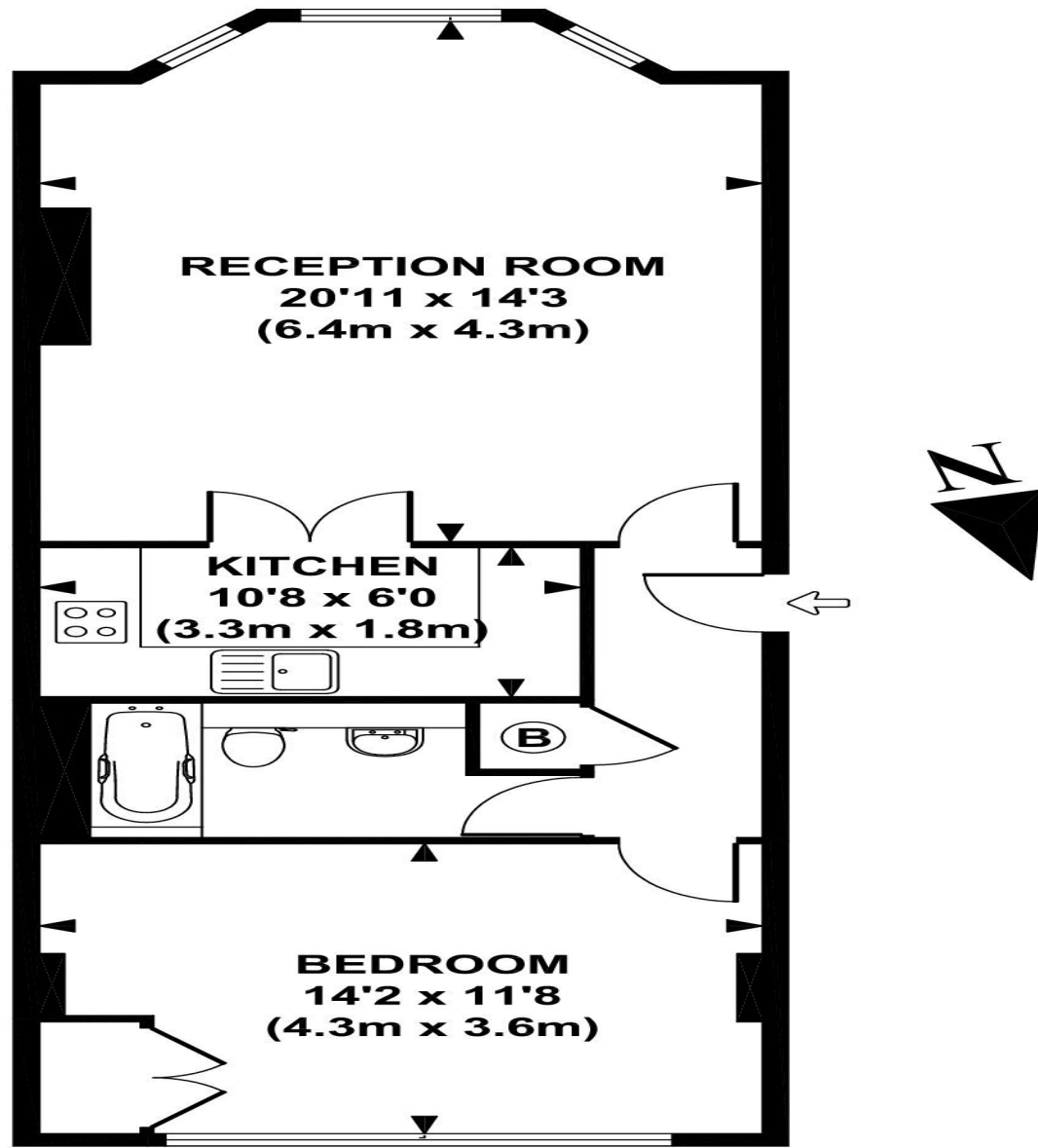
Google



4.9 Stars | 132 Reviews

Find us on social media

- vitaproperties
- VitaProperties
- VitaProperties



UPPER GROUND FLOOR

APPROX. GROSS INTERNAL FLOOR AREA 607 SQ FT / 57 SQ M