



Alma Square, St Johns Wood, London, NW8 | £4,615

- Terraced House
- Set Across Five Floors
- Access to Communal Gardens
- High Specification

- Available Immediately

"Vita Properties have been tremendously helpful throughout the process of securing/renting my flat. Informative about the property, prompt communication, easy to use dashboard for sharing of information, and pleasant to work with. Highly recommend!"

Presenting this incredible five bed terraced house to rent in the heart of St Johns Wood that has recently been refurbished to the highest of standards.

Set across five floors and boasting an impressive 3109 sq ft of living space, this property has a lot to offer. Offering three reception rooms, a large fully integrated kitchen with breakfast bar and high specification Siemens appliances, separate breakfast room, three double bedrooms (with en-suite access), two further double bedrooms, two WC's, utility room and two large terraces. This property has been fully modernized and boasts a surround sound speaker system & air conditioning throughout. Additionally residents will benefit from the use of well manicured communal gardens.

Set on a quaint residential road and ideally situated for local amenities and transport links. Within walking distance to both Little Venice & Maida Vale.

	House
	Available
to Let	
	x 5
	x 3
	x 4



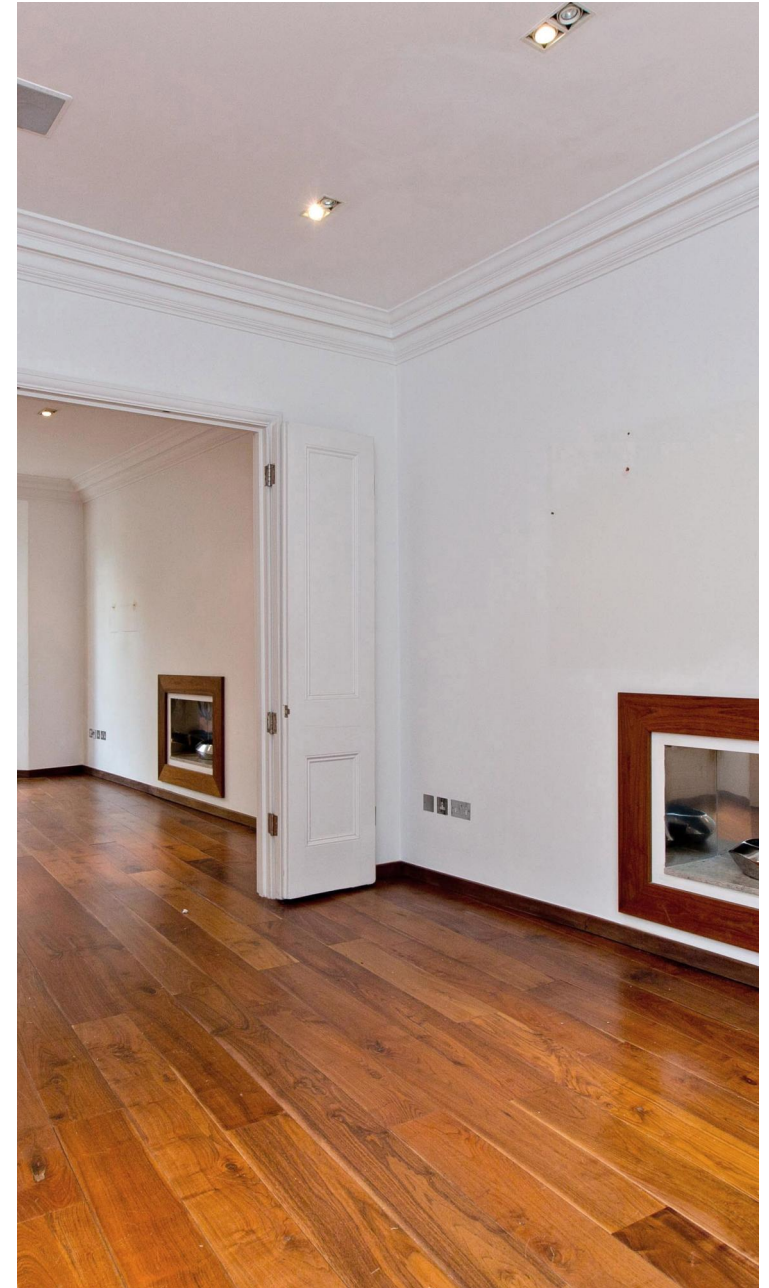
Oliver Kent

 oliver.kent@vitaproperties.uk

 +4477 7274 0351



"I was very impressed with Vita and their network of buyers. When the sale of my flat fell through (twice) they worked extremely hard to find new buyers in a difficult market - thank you!"



"Working with Vita properties has been a smooth experience! No complaints at all. Our letting agent, Diana has been fantastic and very helpful throughout the whole process. I would highly recommend both Vita properties and Diana."



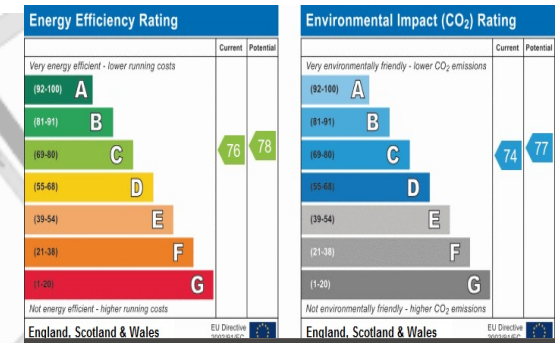
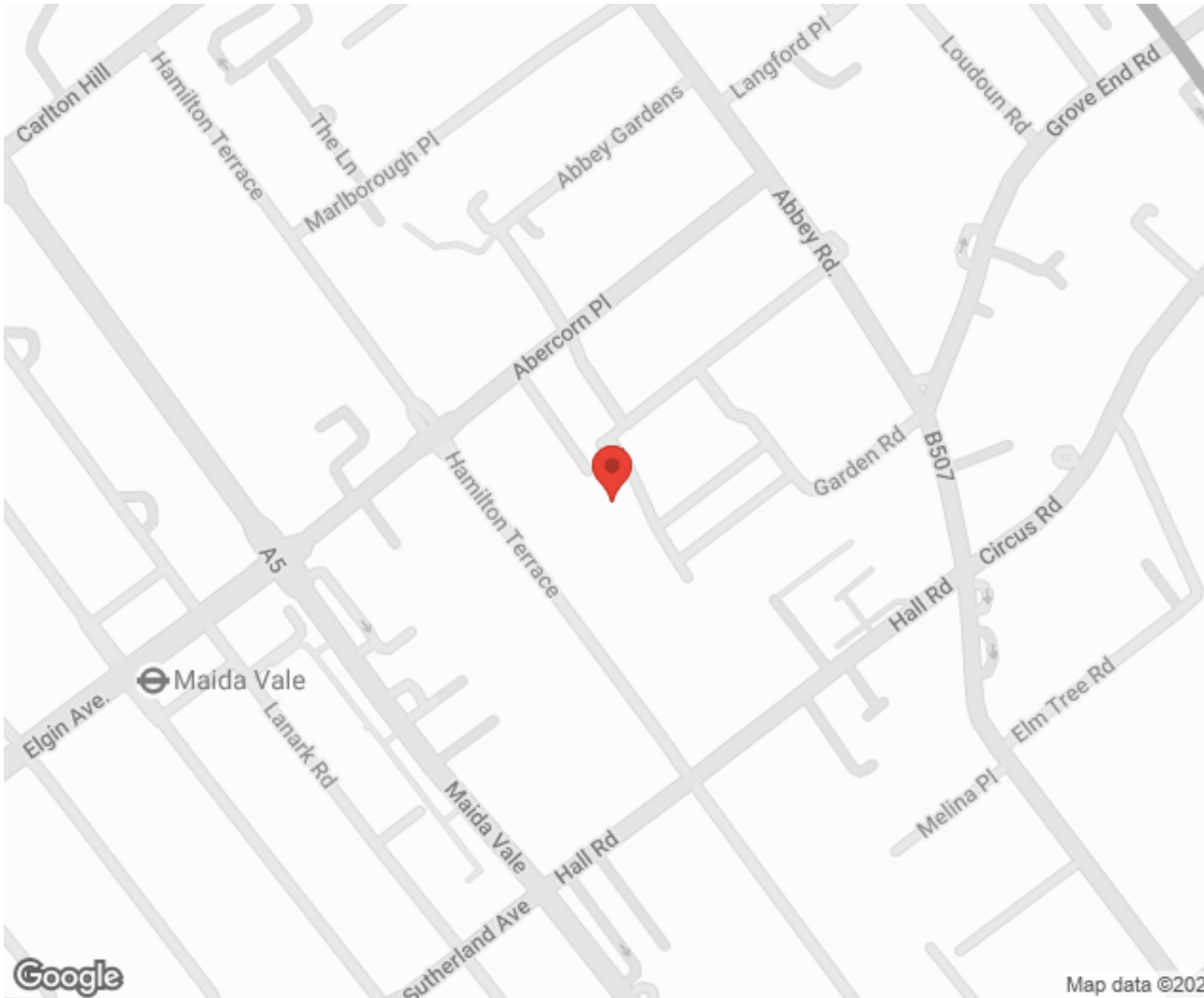
"I used Vita properties to find a flat recently and it was an overall professional, personalised and positive experience. Saira went the extra mile to accommodate to our needs and quick to help us whenever possible."



**MORE INFO, PICTURES,
CONTACT ON
OUR WEBSITE**



"Vita Properties is a very professional agency. My experience with them was incredible and the entire team was very helpful and kind throughout the renting process. I'd highly recommend!"



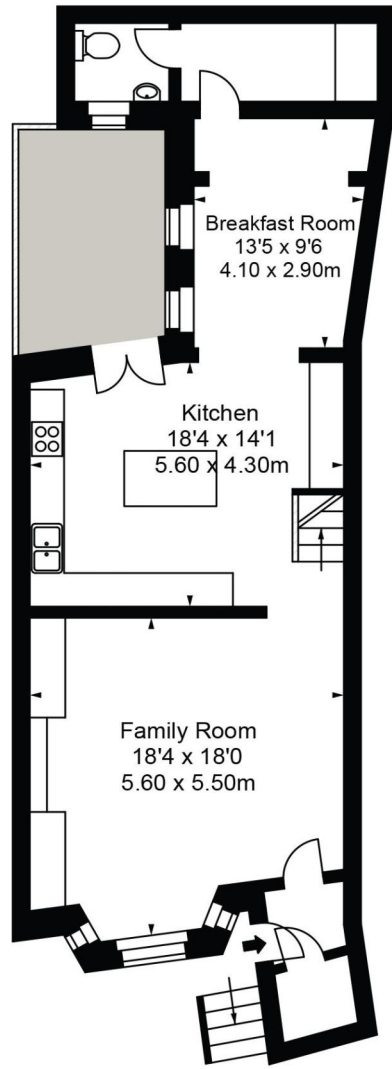
SCAN FOR MORE GOOGLE REVIEWS

Google
★★★★★
4.9 Stars | 132 Reviews

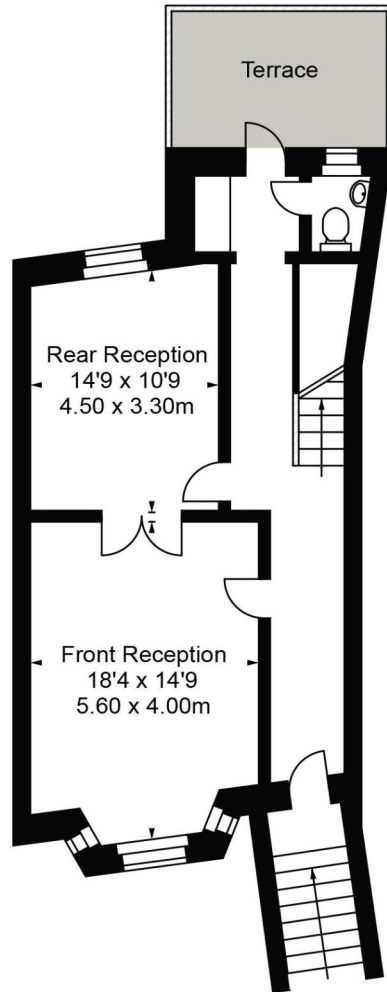
Find us on social media

- vitaproperties
- VitaProperties
- VitaProperties

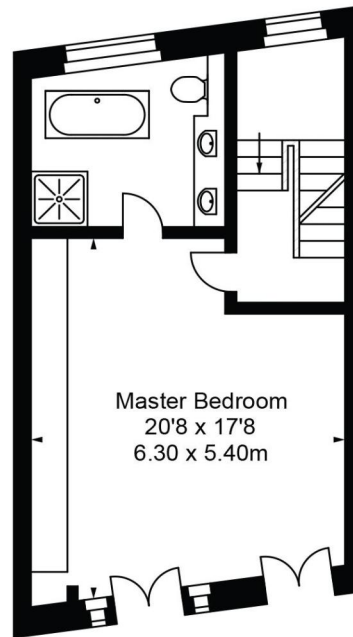
Alma



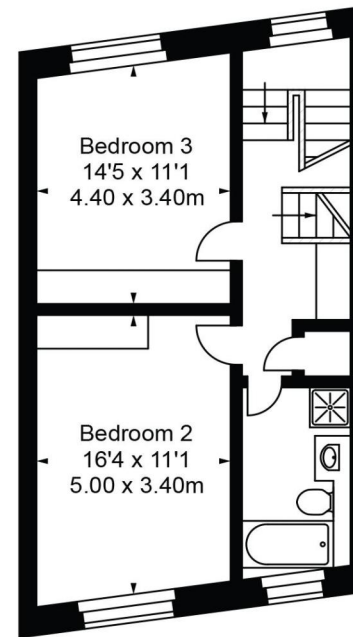
Lower Ground Floor



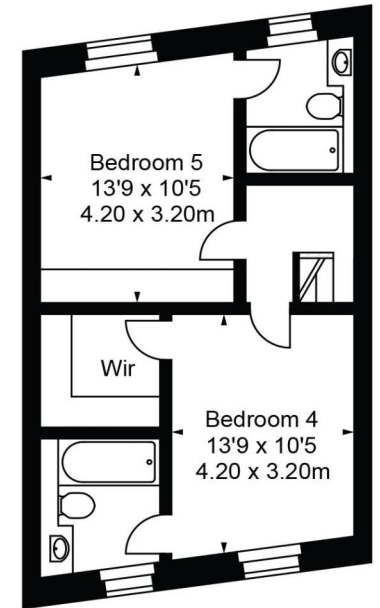
Raised Ground Floor



First Floor



Second Floor



Top Floor

Approx Gross Internal Area 3109 Sq Ft - 288.79 Sq M

FOR ILLUSTRATIVE PURPOSES ONLY. NOT TO SCALE.

Whilst every attempt has been made to ensure the accuracy of the floorplan shown, all measurements, positioning, fixtures, fittings and any other data shown are an approximate interpretation for illustrative purposes only and are not to scale. No responsibility is taken for any error, omission, misstatement or use of data shown.

Floor plan by www.bestangle.co.uk