



Randolph Avenue, Little Venice, London. W9 .| £650,000

- Modern finish
- Bright throughout
- Wooden floors
- Moments to transport

- Long lease with share of freehold

"Vita Properties have been tremendously helpful throughout the process of securing/renting my flat. Informative about the property, prompt communication, easy to use dashboard for sharing of information, and pleasant to work with. Highly recommend!"

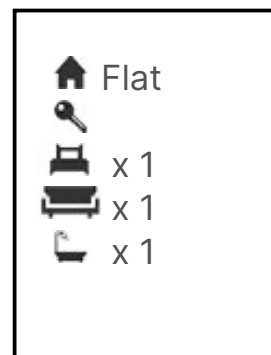
Offered chain free is this modern, recently refurbished top floor one bedroom apartment forming part of an elegant stucco fronted Victorian Terraced house perfectly located in the heart of Little Venice. This beautifully bright apartment benefits from a fitted kitchen with Smeg appliances and a Granite surface, wooden floors to the reception with ample book shelving. The master bedroom looks towards the garden and has fantastic fitted storage and new grey carpets. Conveniently located being only moments from Warwick Avenue and Maida Vale tube stations this property makes the perfect home. Share of freehold with a long lease.



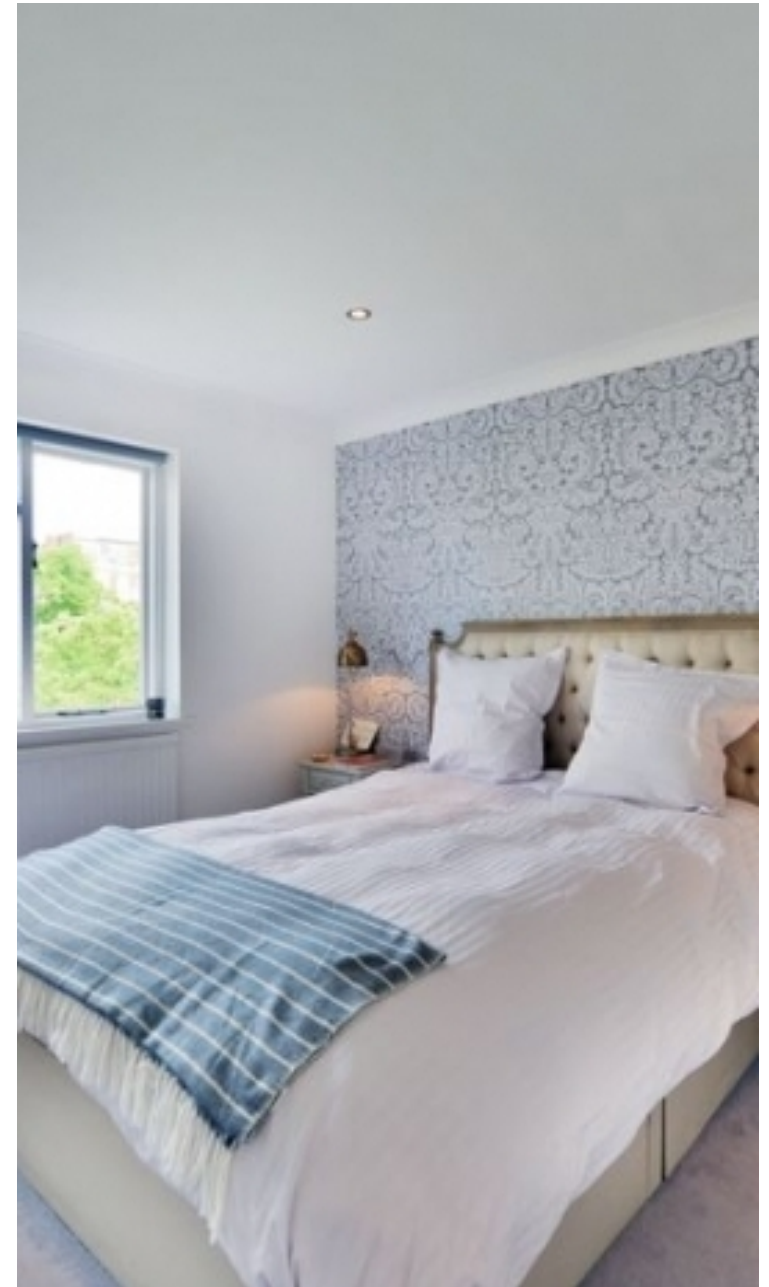
Oliver Kent

✉ oliver.kent@vitaproperties.uk

☎ +4477 7274 0351



"I was very impressed with Vita and their network of buyers. When the sale of my flat fell through (twice) they worked extremely hard to find new buyers in a difficult market - thank you!"



"Working with Vita properties has been a smooth experience! No complaints at all. Our letting agent, Diana has been fantastic and very helpful throughout the whole process. I would highly recommend both Vita properties and Diana."



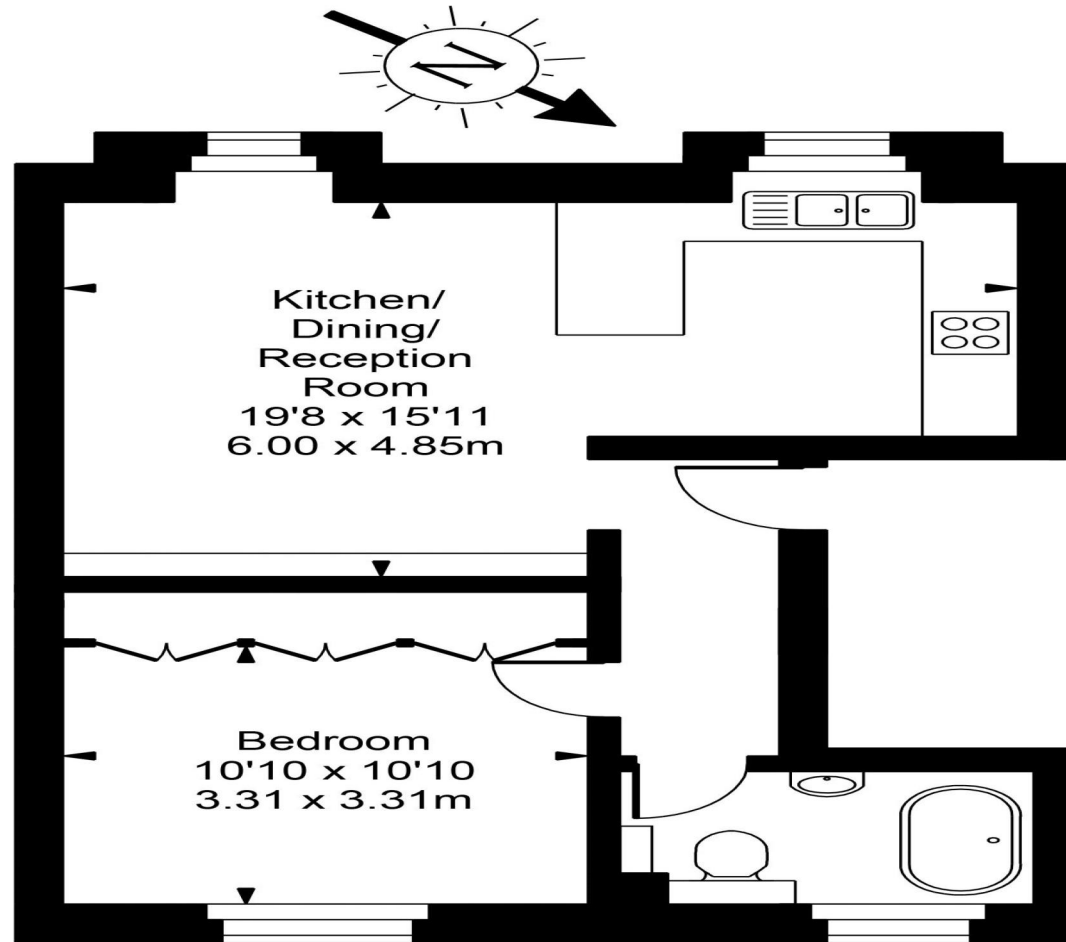
"I used Vita properties to find a flat recently and it was an overall professional, personalised and positive experience. Saira went the extra mile to accommodate to our needs and quick to help us whenever possible."



**MORE INFO, PICTURES,
CONTACT ON
OUR WEBSITE**



Randolph Avenue



Fourth Floor

Approx Gross Internal Area **523 Sq Ft - 48.59 Sq M**

FOR ILLUSTRATIVE PURPOSES ONLY. NOT TO SCALE.

Whilst every attempt has been made to ensure the accuracy of the floorplan shown, all measurements, positioning, fixtures, fittings and any other data shown are an approximate interpretation for illustrative purposes only and are not to scale. No responsibility is taken for any error, omission, misstatement or use of data shown. Floor plan by www.bestangle.co.uk

