



Templewood Avenue, Hampstead, London, NW3 .| £810

- Use of beautiful communal gardens
- Modern
- Coach house
- Fully fitted eat in kitchen plus a study area

- Available now

"Vita Properties have been tremendously helpful throughout the process of securing/renting my flat. Informative about the property, prompt communication, easy to use dashboard for sharing of information, and pleasant to work with. Highly recommend!"

Available Now - A beautifully presented 2 bedroomed detached coach house set over 2 floors and located in one of Hampstead's premier thoroughfares. The property comprises: spacious reception room with wooden floors, galleried study area/play area overlooking the reception room, kitchen/breakfast area, double bedroom with fitted wardrobes, single bedroom, luxury bathroom, small patio area & use of beautiful communal gardens.

Furthermore, the house benefits from an off street parking space



Oliver Kent

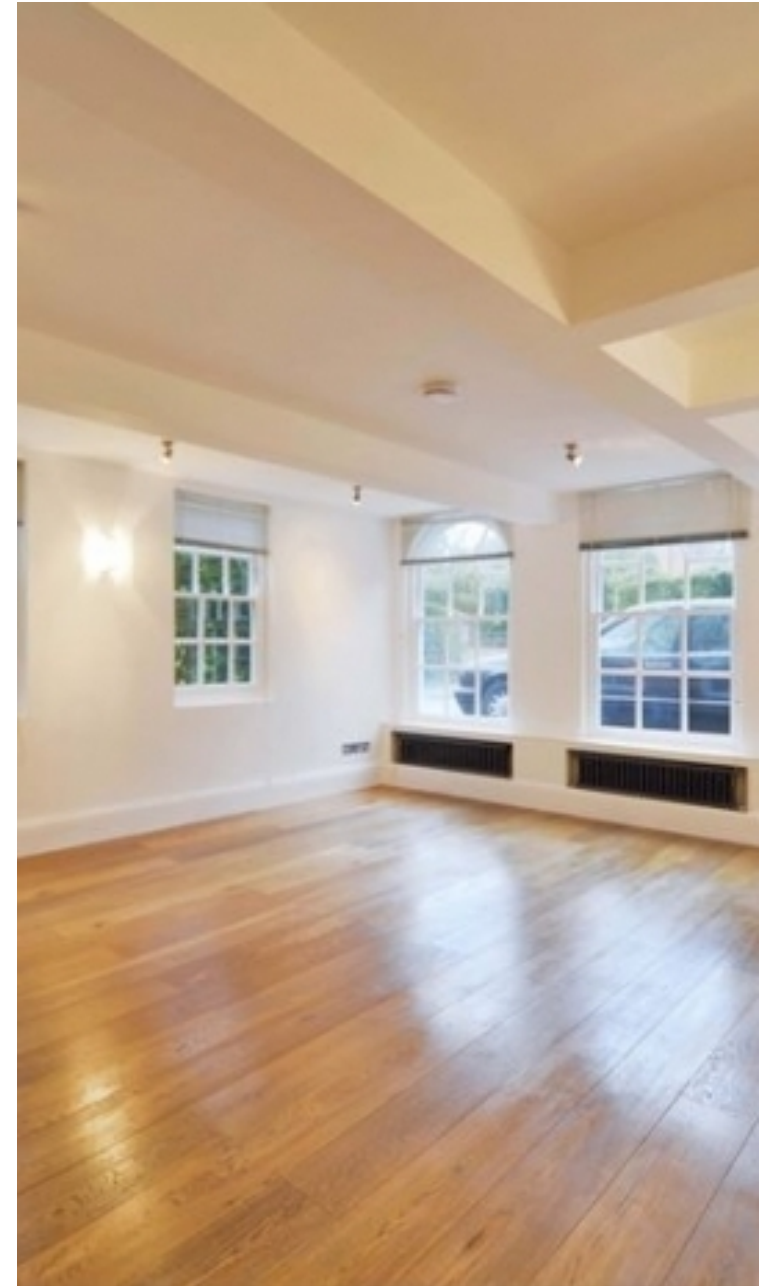
✉ oliver.kent@vitaproperties.uk
☎ +4477 7274 0351



🏠	House
🔑	Available to Let
🛏	x 2
🛋	x 1
🚿	x 1



"I was very impressed with Vita and their network of buyers. When the sale of my flat fell through (twice) they worked extremely hard to find new buyers in a difficult market - thank you!"



"Working with Vita properties has been a smooth experience! No complaints at all. Our letting agent, Diana has been fantastic and very helpful throughout the whole process. I would highly recommend both Vita properties and Diana."



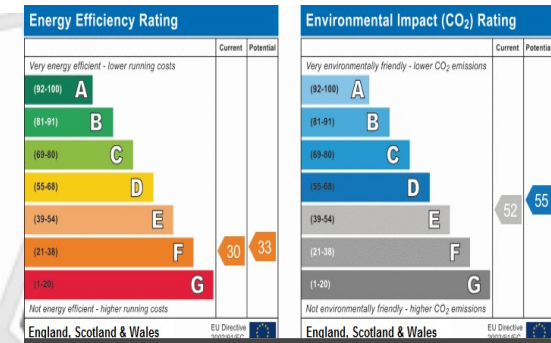
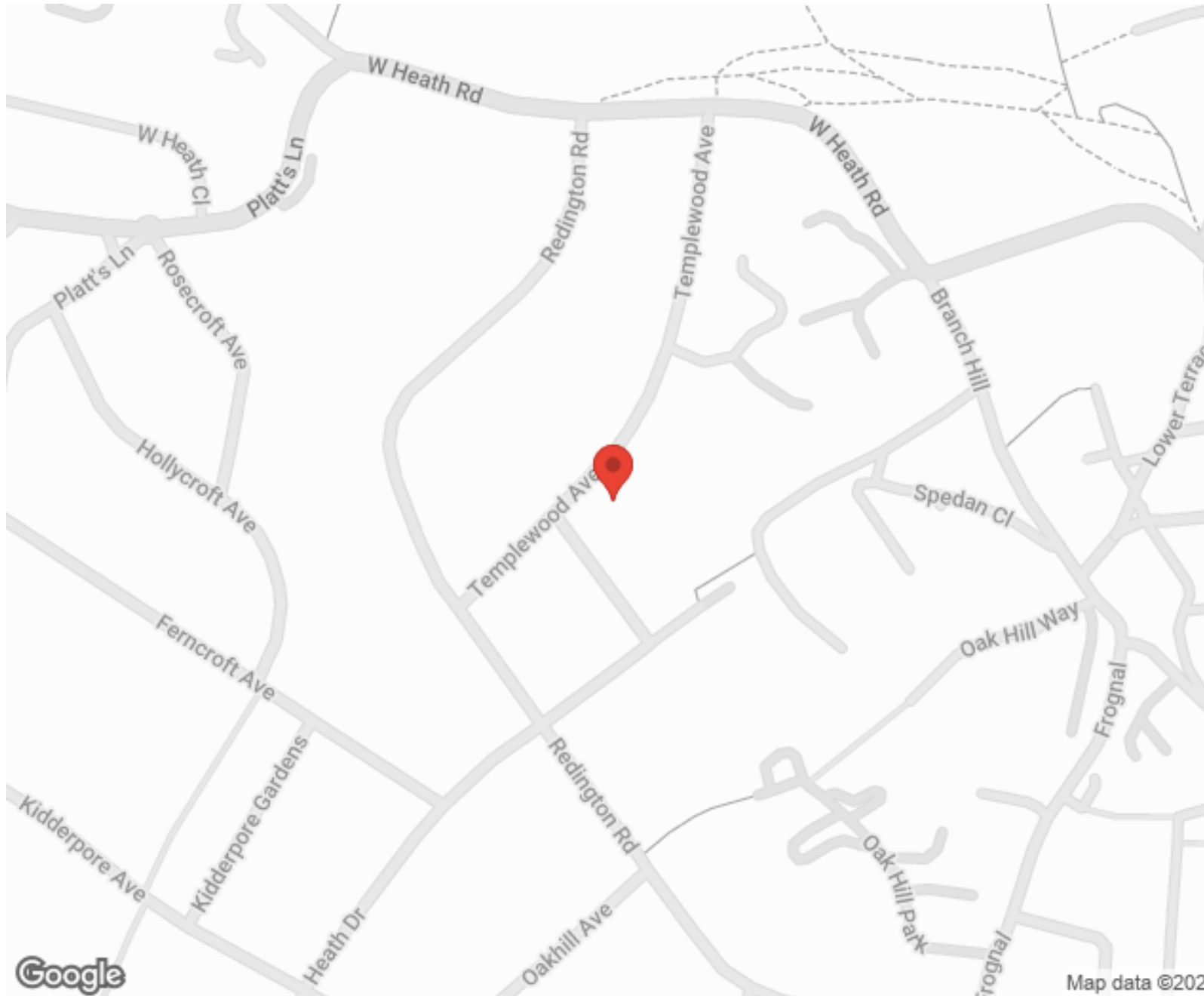
"I used Vita properties to find a flat recently and it was an overall professional, personalised and positive experience. Saira went the extra mile to accommodate to our needs and quick to help us whenever possible."



**MORE INFO, PICTURES,
CONTACT ON
OUR WEBSITE**



"Vita Properties is a very professional agency. My experience with them was incredible and the entire team was very helpful and kind throughout the renting process. I'd highly recommend!"



SCAN FOR MORE GOOGLE REVIEWS

Google
★★★★★
4.9 Stars | 132 Reviews

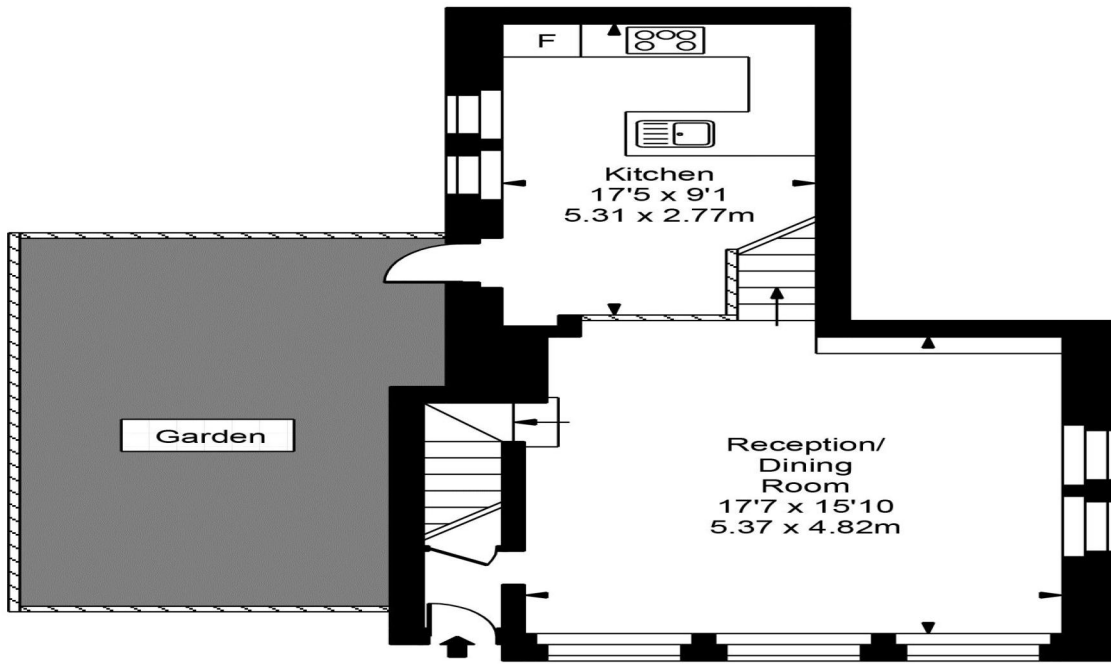
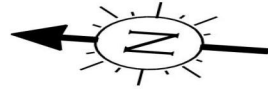
Find us on social media

- vitaproperties
- VitaProperties
- VitaProperties

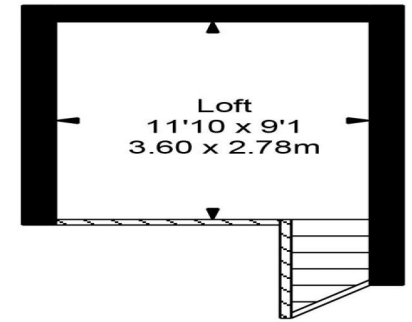


Map data ©2024

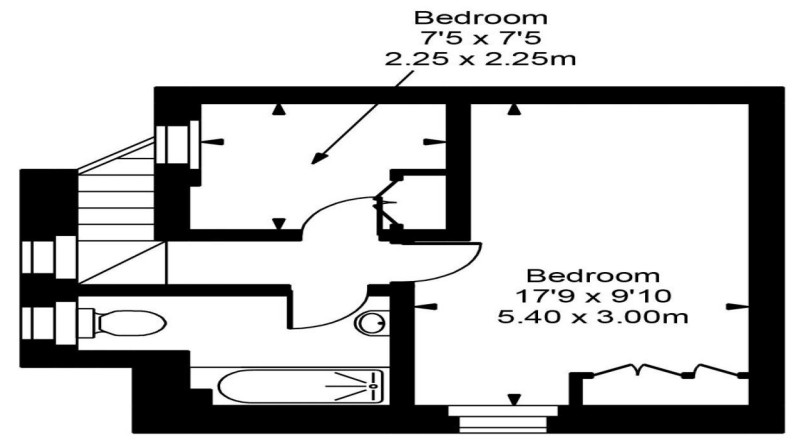
Coach House



Ground Floor



First Floor



First Floor

Approx Gross Internal Area **938 Sq Ft - 87.14 Sq M**

For Illustration Purposes Only - Not To Scale
Floor plan by www.bestangle.co.uk