



Greencroft Gardens South Hampstead NW6 .| £375

- One Bed Apartment
- Split Level
- Breakfast Bar
- Well Situated

- In Good Decorative Condition
- Available 14th Jan

"Vita Properties have been tremendously helpful throughout the process of securing/renting my flat. Informative about the property, prompt communication, easy to use dashboard for sharing of information, and pleasant to work with. Highly recommend!"

Available 14 January 2018 - This quaint, split-level apartment is set across the lower ground and ground floor of this period conversion building. Benefiting from large feature windows, a good sized kitchen with dishwasher, washer/dryer and breakfast bar, a large tiled bathroom and one good sized bedroom.

Greencroft Gardens is ideally located within easy walking distance of Finchley Road Tube Station and all the amenities of Finchley Road



Oliver Kent

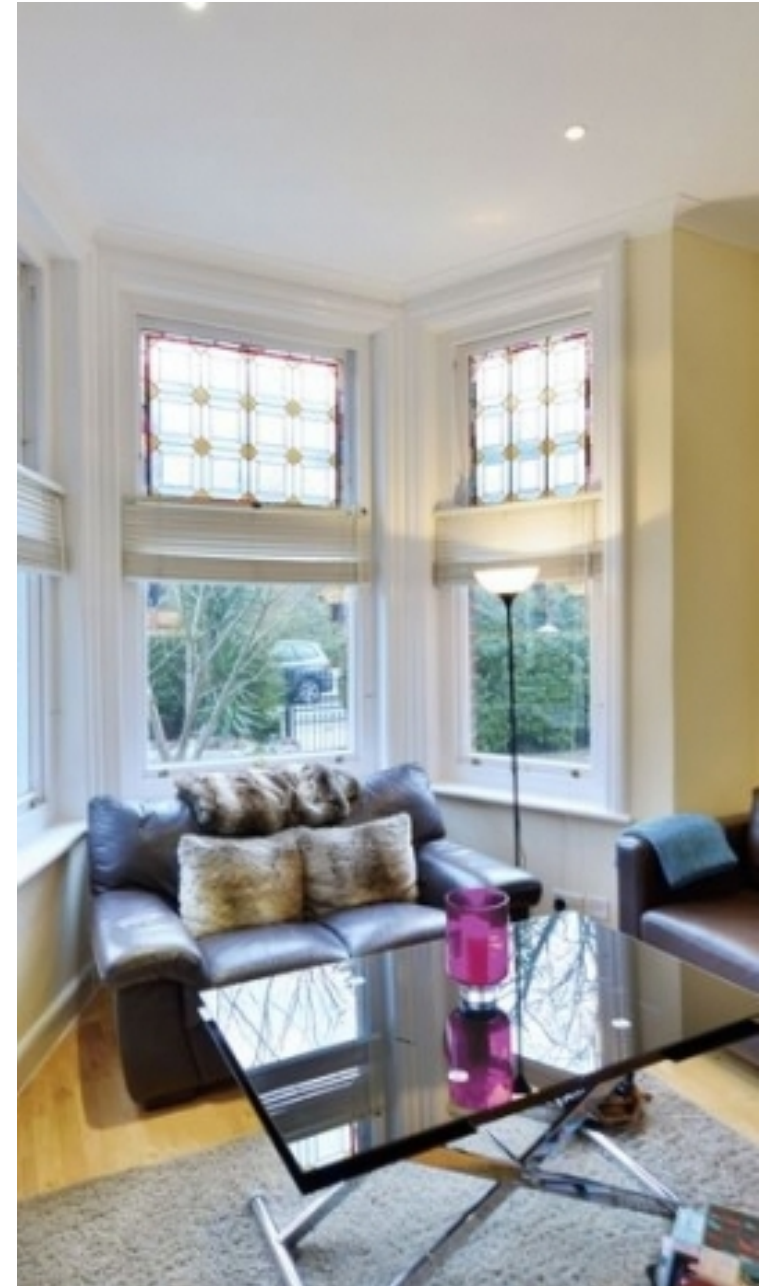
✉ oliver.kent@vitaproperties.uk
☎ +4477 7274 0351



🏠	Flat
🔑	Under Negotiation
🍽️	x 1
🚿	x 1
🚿	x 1



"I was very impressed with Vita and their network of buyers. When the sale of my flat fell through (twice) they worked extremely hard to find new buyers in a difficult market - thank you!"



"Working with Vita properties has been a smooth experience! No complaints at all. Our letting agent, Diana has been fantastic and very helpful throughout the whole process. I would highly recommend both Vita properties and Diana."



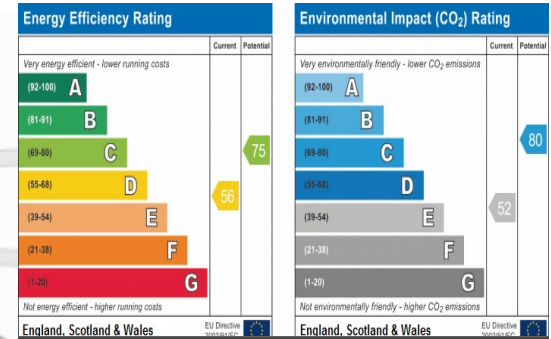
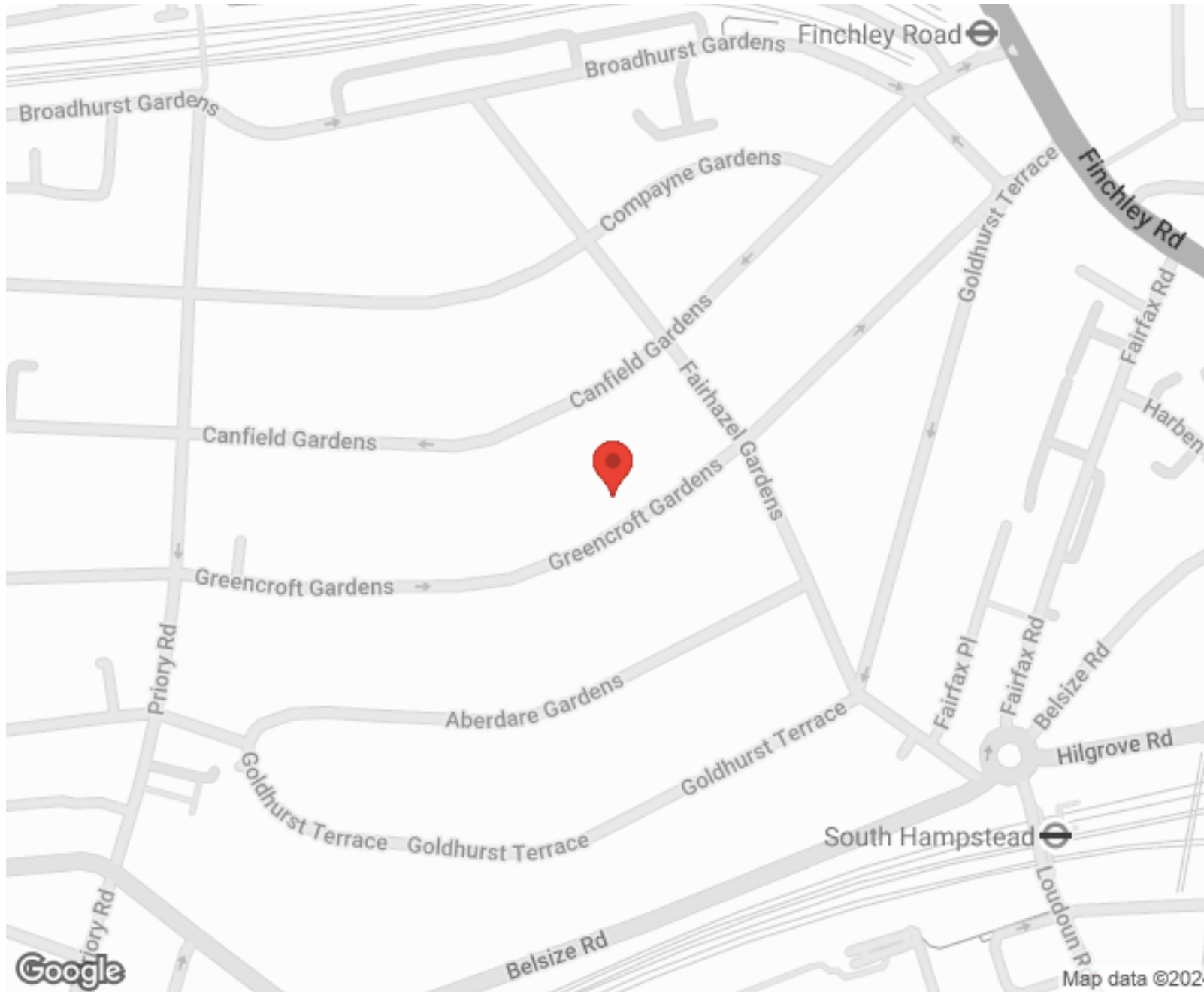
"I used Vita properties to find a flat recently and it was an overall professional, personalised and positive experience. Saira went the extra mile to accommodate to our needs and quick to help us whenever possible."



**MORE INFO, PICTURES,
CONTACT ON
OUR WEBSITE**



"Vita Properties is a very professional agency. My experience with them was incredible and the entire team was very helpful and kind throughout the renting process. I'd highly recommend!"



SCAN FOR MORE
GOOGLE REVIEWS



Google

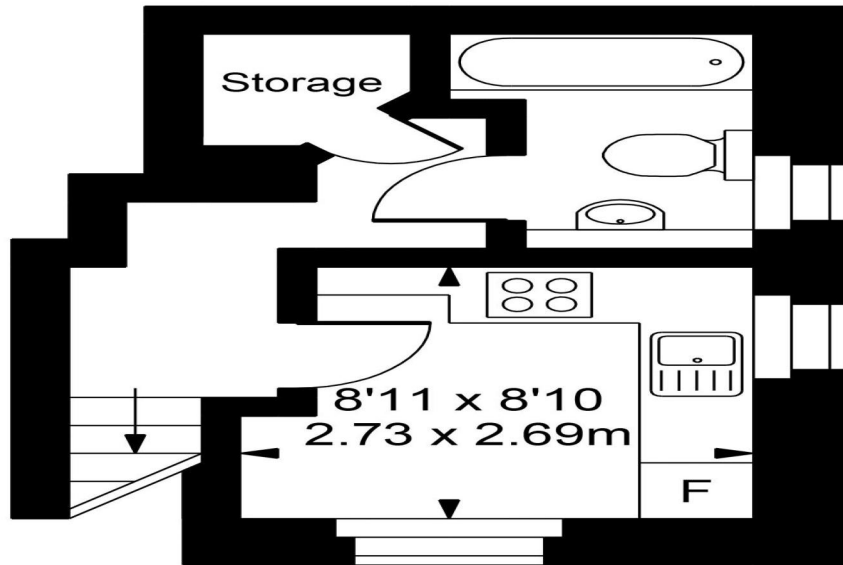
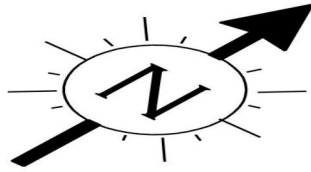


4.9 Stars | 132 Reviews

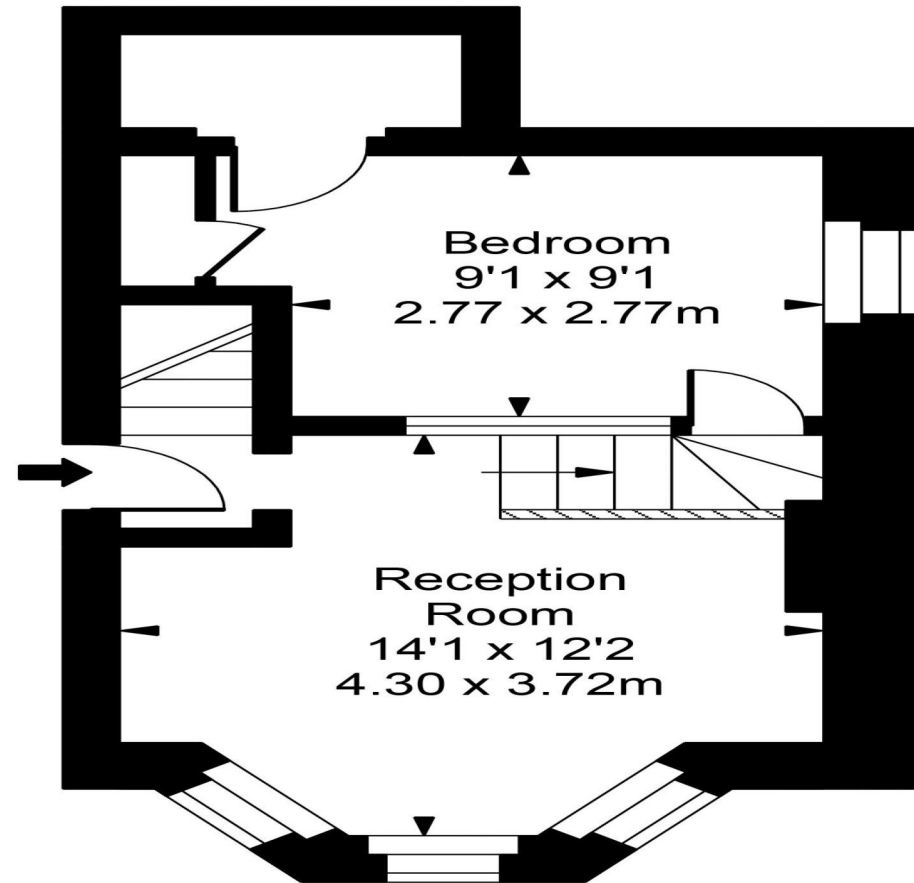
Find us on social media

-  vitaproperties
-  VitaProperties
-  VitaProperties

Greencroft Gardens



Lower Ground Floor



Ground Floor



Approx Gross Internal Area **477 Sq Ft - 44.31 Sq M**

FOR ILLUSTRATIVE PURPOSES ONLY. NOT TO SCALE.

Whilst every attempt has been made to ensure the accuracy of the floorplan shown, all measurements, positioning, fixtures, fittings and any other data shown are an approximate interpretation for illustrative purposes only and are not to scale. No responsibility is taken for any error, omission, miss-statement or use of data shown.

Floor plan by www.bestangle.co.uk