



Broomsleigh Street, West Hampstead, London, NW6 .| £995

- Private garden
- Within walking distance to West Hampstead High Street
- Within 10 mins to all transport links
- Eat in Kitchen with American style fridge freezer

- Window shutters throughout
- Available around the beg Nov (Negotiable)
- More photos coming

"Vita Properties have been tremendously helpful throughout the process of securing/renting my flat. Informative about the property, prompt communication, easy to use dashboard for sharing of information, and pleasant to work with. Highly recommend!"

A beautifully refurbished four double bedroom house (1445 sq ft.) in this residential location close to West Hampstead comprising a double volume reception room with feature fireplace, luxury kitchen/diner with integrated appliances and doors out onto a south east facing 25' garden, wood flooring, four double bedrooms with fitted wardrobes, luxury bathroom with shower (ensuite bathroom to the top floor master bedroom).

Offered part furnished, furnished or unfurnished



Oliver Kent

✉ oliver.kent@vitaproperties.uk

☎ +4477 7274 0351



🏠	House
🔑	Available to Let
🛏️	x 4
🛋️	x 1
🚿	x 2



"I was very impressed with Vita and their network of buyers. When the sale of my flat fell through (twice) they worked extremely hard to find new buyers in a difficult market - thank you!"



"Working with Vita properties has been a smooth experience! No complaints at all. Our letting agent, Diana has been fantastic and very helpful throughout the whole process. I would highly recommend both Vita properties and Diana."



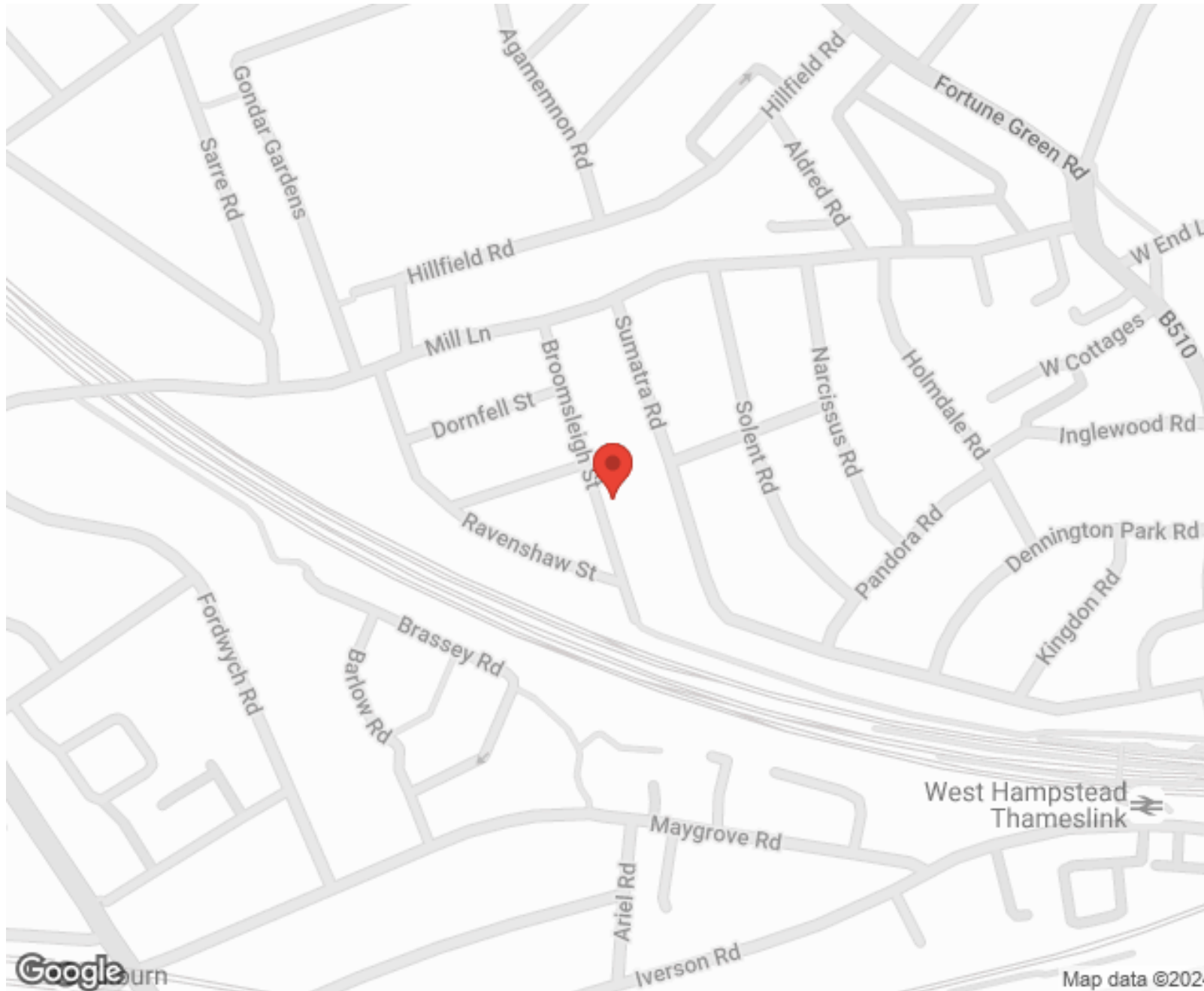
"I used Vita properties to find a flat recently and it was an overall professional, personalised and positive experience. Saira went the extra mile to accommodate to our needs and quick to help us whenever possible."



**MORE INFO, PICTURES,
CONTACT ON
OUR WEBSITE**



"Vita Properties is a very professional agency. My experience with them was incredible and the entire team was very helpful and kind throughout the renting process. I'd highly recommend!"



SCAN FOR MORE
GOOGLE REVIEWS




Google




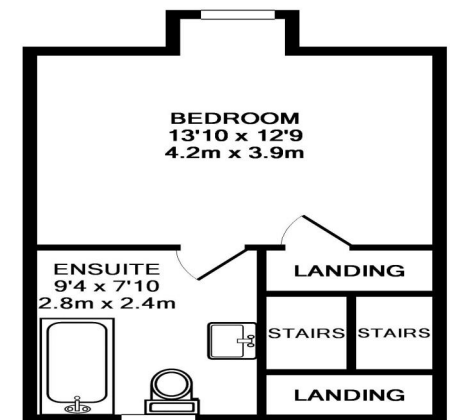
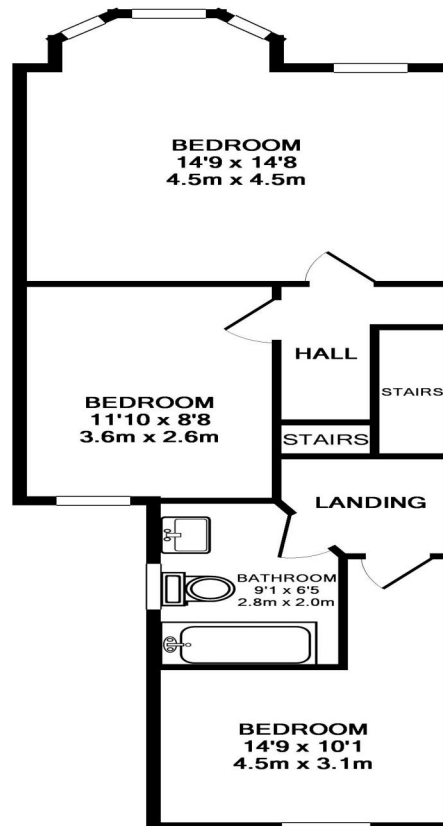
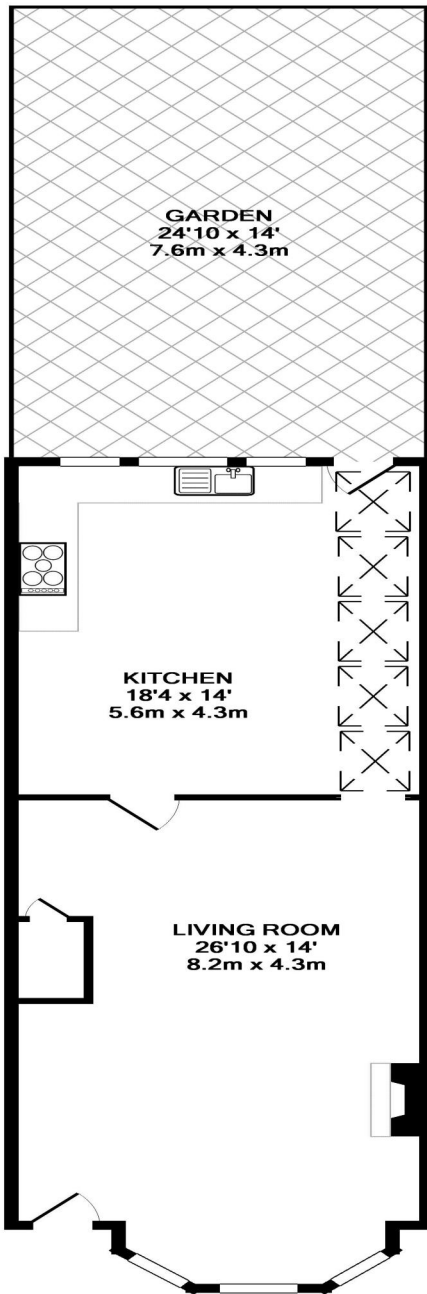
4.9 Stars | 132 Reviews

Find us on social media

 vitaproperties

 VitaProperties

 VitaProperties



TOTAL APPROX. FLOOR AREA 134.2 SQ.M. (1445 SQ.FT.)

Whilst every attempt has been made to ensure the accuracy of the floor plan contained here, measurements of doors, windows, rooms and any other items are approximate and no responsibility is taken for any error, omission, or mis-statement. This plan is for illustrative purposes only and should be used as such by any prospective purchaser. The services, systems and appliances shown have not been tested and no guarantee as to their operability or efficiency can be given
Made with Metropix ©2007