



Greencroft Gardens, South Hampstead, London, NW6 .| £800,000

- First come first serve parking
- A south facing low maintenance private garden
- High Ceilings
- Modern finish

- Moments to transport
- Share of freehold
- Chain free

"Vita Properties have been tremendously helpful throughout the process of securing/renting my flat. Informative about the property, prompt communication, easy to use dashboard for sharing of information, and pleasant to work with. Highly recommend!"

Offered chain free is this two double bedroom apartment, benefitting a private south facing garden and off street parking. This beautifully presented interior designed apartment is situated on the ground floor of a period conversion with high ceilings, private south facing decked garden leading from the reception via floor to ceiling French doors and off street parking on a first come first served basis. The flat, offers contemporary inside/ outside living and has been stylishly appointed throughout with development potential for a basement subject to necessary planning/ building approval. Greencroft Gardens is ideally located within easy walking distance of Finchley Road Tube Station and the shops of Finchley Road.

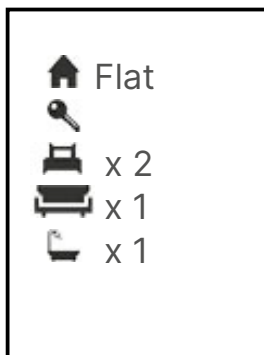
Tenure: Share of Freehold



Oliver Kent

✉ oliver.kent@vitaproperties.uk

☎ +4477 7274 0351



"I was very impressed with Vita and their network of buyers. When the sale of my flat fell through (twice) they worked extremely hard to find new buyers in a difficult market - thank you!"



"Working with Vita properties has been a smooth experience! No complaints at all. Our letting agent, Diana has been fantastic and very helpful throughout the whole process. I would highly recommend both Vita properties and Diana."



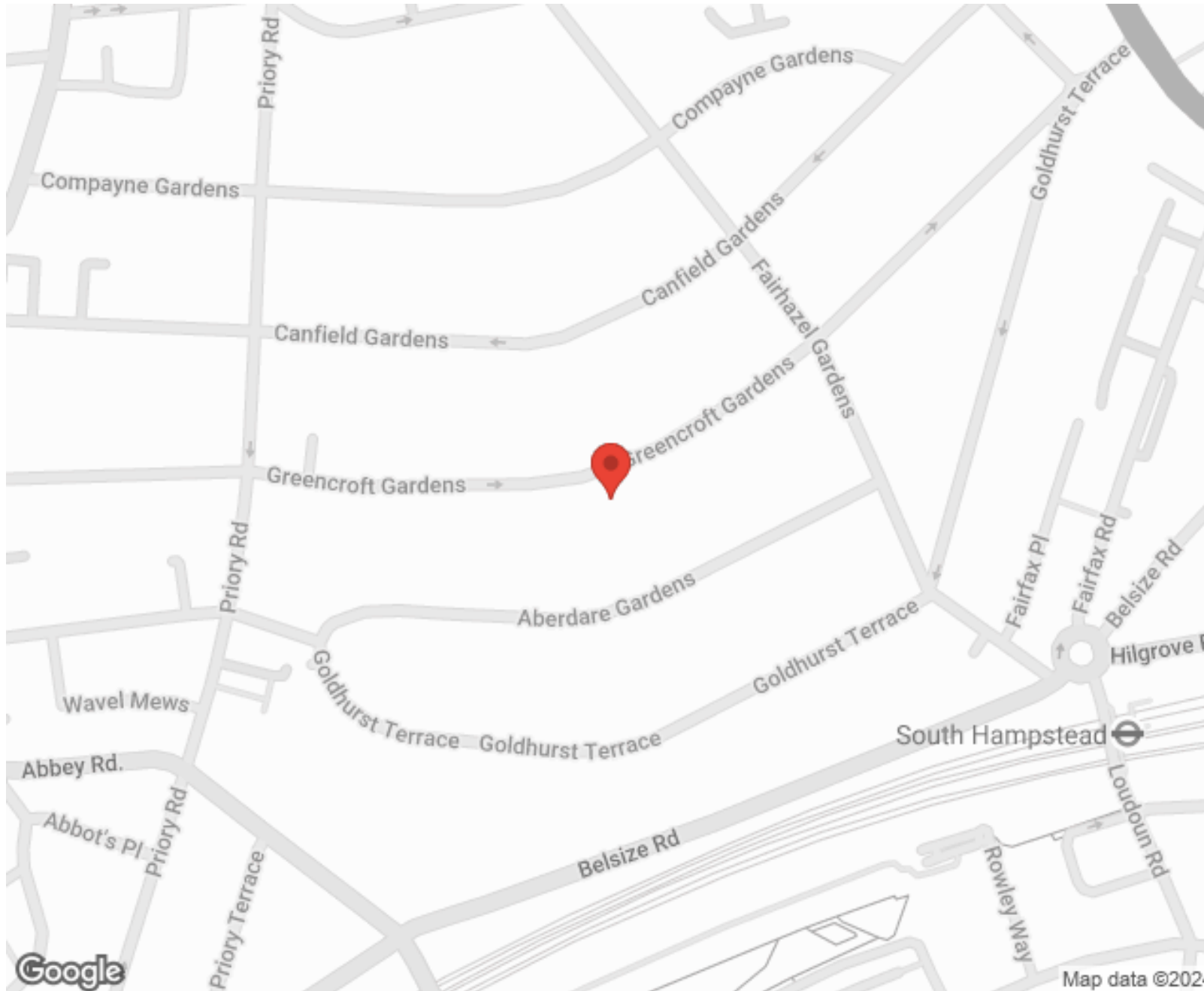
"I used Vita properties to find a flat recently and it was an overall professional, personalised and positive experience. Saira went the extra mile to accommodate to our needs and quick to help us whenever possible."



**MORE INFO, PICTURES,
CONTACT ON
OUR WEBSITE**



"Vita Properties is a very professional agency. My experience with them was incredible and the entire team was very helpful and kind throughout the renting process. I'd highly recommend!"



SCAN FOR MORE
GOOGLE REVIEWS




Google




4.9 Stars | 132 Reviews

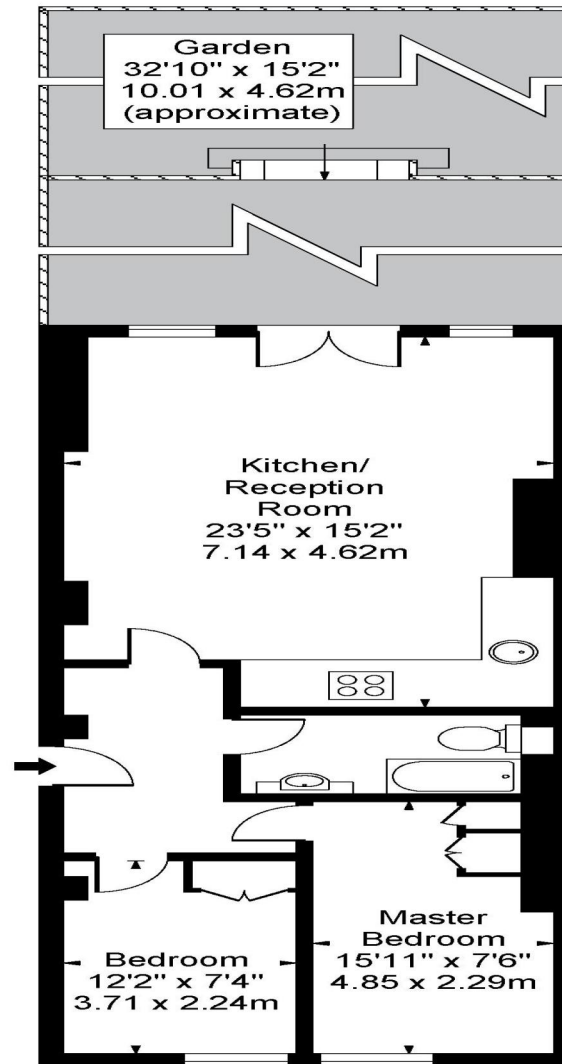
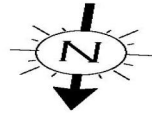
Find us on social media

 vitaproperties

 VitaProperties

 VitaProperties

Greencroft Gardens, NW6



Ground Floor

Approx Gross Internal Area 688 Sq Ft - 63.92 Sq M

For Illustration Purposes Only - Not To Scale Floor Plan by www.nogaphotostudio.com Ref: No.10226

This floor plan should be used as a general outline for guidance only. Any intending purchaser or lessee should satisfy themselves by inspection, searches, enquiries and full survey as to the correctness of each statement. Any areas, measurements or distances quoted are approximate and should not be used to value a property or be the basis of any sale or let.