



Belsize Square, Belsize Park, London, NW3 .| £950

- Three Bed, Two Bath
- Excellent Decorative Condition Throughout
- Extensive Storage Space
- High Ceilings

- Available early October

"Vita Properties have been tremendously helpful throughout the process of securing/renting my flat. Informative about the property, prompt communication, easy to use dashboard for sharing of information, and pleasant to work with. Highly recommend!"

Available early October - A stunning 3 bedroom period conversion packed full of desirable features including beautifully high ceilings, large windows, extensive storage and wardrobe space as well as access to your gorgeous private garden with patio and shed. The whole property is in beautiful decorative condition throughout.

Walking Distance to Belsize Park and Swiss Cottage Undergrounds



Oliver Kent

✉ oliver.kent@vitaproperties.uk

☎ +4477 7274 0351



🏠	Flat
🔑	Available to Let
🛏️	x 3
🛋️	x 1
🚿	x 2



"I was very impressed with Vita and their network of buyers. When the sale of my flat fell through (twice) they worked extremely hard to find new buyers in a difficult market - thank you!"



"Working with Vita properties has been a smooth experience! No complaints at all. Our letting agent, Diana has been fantastic and very helpful throughout the whole process. I would highly recommend both Vita properties and Diana."



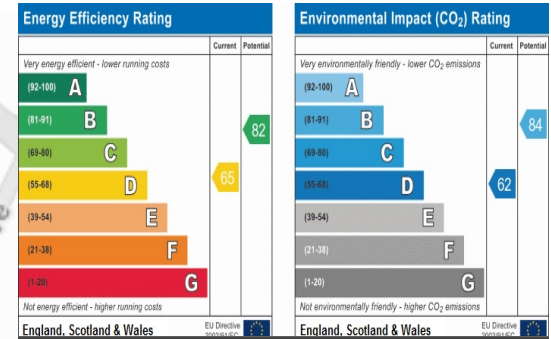
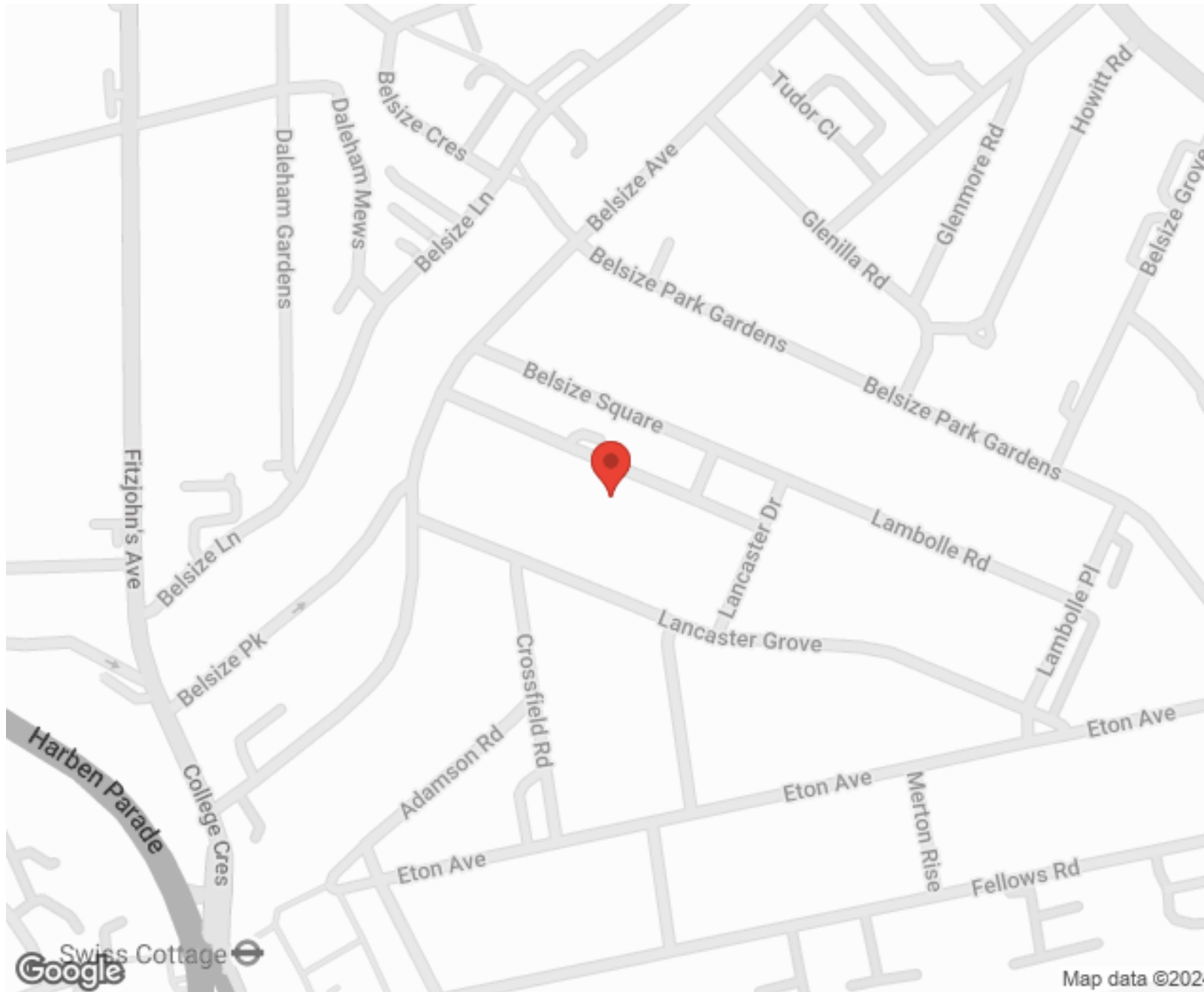
"I used Vita properties to find a flat recently and it was an overall professional, personalised and positive experience. Saira went the extra mile to accommodate to our needs and quick to help us whenever possible."



**MORE INFO, PICTURES,
CONTACT ON
OUR WEBSITE**



"Vita Properties is a very professional agency. My experience with them was incredible and the entire team was very helpful and kind throughout the renting process. I'd highly recommend!"



SCAN FOR MORE
GOOGLE REVIEWS



Google



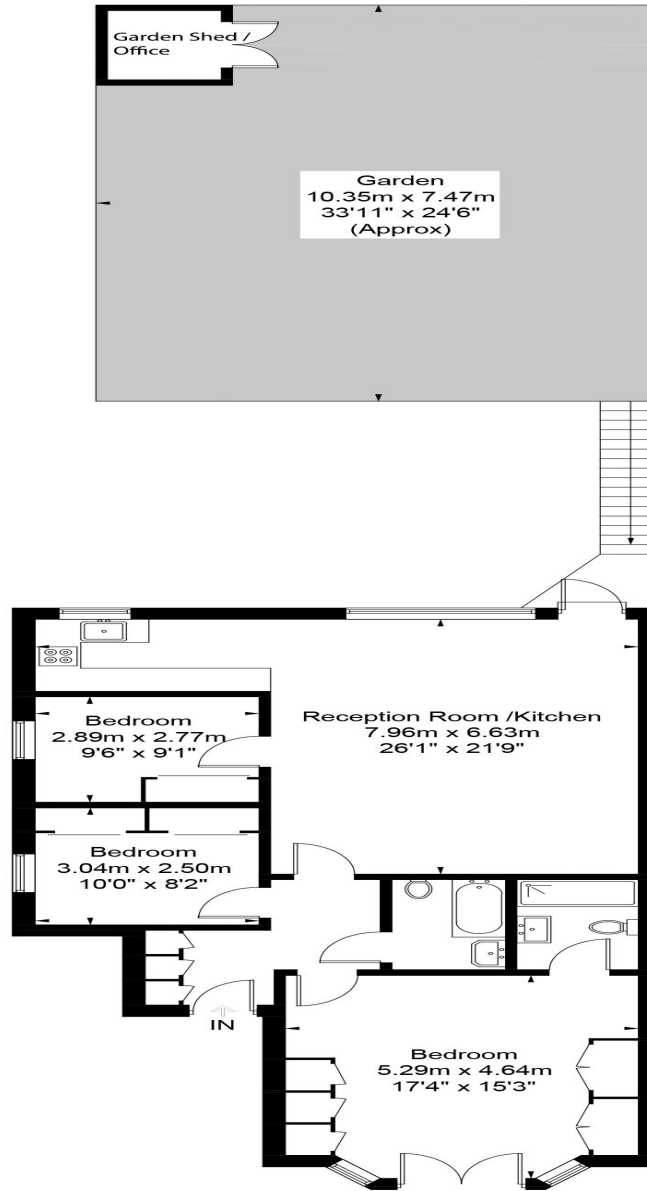
4.9 Stars | 132 Reviews

Find us on social media

- vitaproperties
- VitaProperties
- VitaProperties

Belsize Square

Approximate Gross Internal Area = 97.4 sq m / 1048 sq ft
(Excluding Garden Shed)



Upper Ground Floor

Illustration for identification purposes only, measurements are approximate, not to scale. FloorplansUsketch.com © 2017 (ID361268)