



Gurney Drive Hampstead Garden Suburb N2 .| £775

- Four Bed House
- Semi-Detached
- Garden
- Newly Decorated

- Set Across Three Floors
- Available Immediately

"Vita Properties have been tremendously helpful throughout the process of securing/renting my flat. Informative about the property, prompt communication, easy to use dashboard for sharing of information, and pleasant to work with. Highly recommend!"

A newly decorated four bedroom, semi detached family home available for immediate occupations set within close walking distance of East Finchley underground station (Northern Line). Set across three floors with a large kitchen & breakfast room, large partially split living/ dining room and downstairs cloakroom. Upstairs has three well proportioned bedrooms and a family bathroom. Up to the top floor you have a large bedroom with bathroom.

Outside is a well maintained garden with patio area. The property is offered unfurnished.



Oliver Kent

✉ oliver.kent@vitaproperties.uk

☎ +4477 7274 0351



🏠	House
🔑	Available to Let
🛏️	x 4
🛋️	x 1
🚿	x 2



"I was very impressed with Vita and their network of buyers. When the sale of my flat fell through (twice) they worked extremely hard to find new buyers in a difficult market - thank you!"



"Working with Vita properties has been a smooth experience! No complaints at all. Our letting agent, Diana has been fantastic and very helpful throughout the whole process. I would highly recommend both Vita properties and Diana."



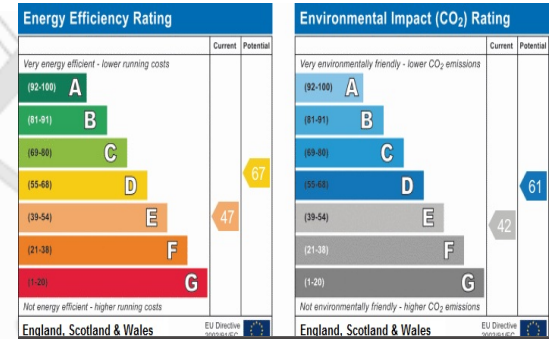
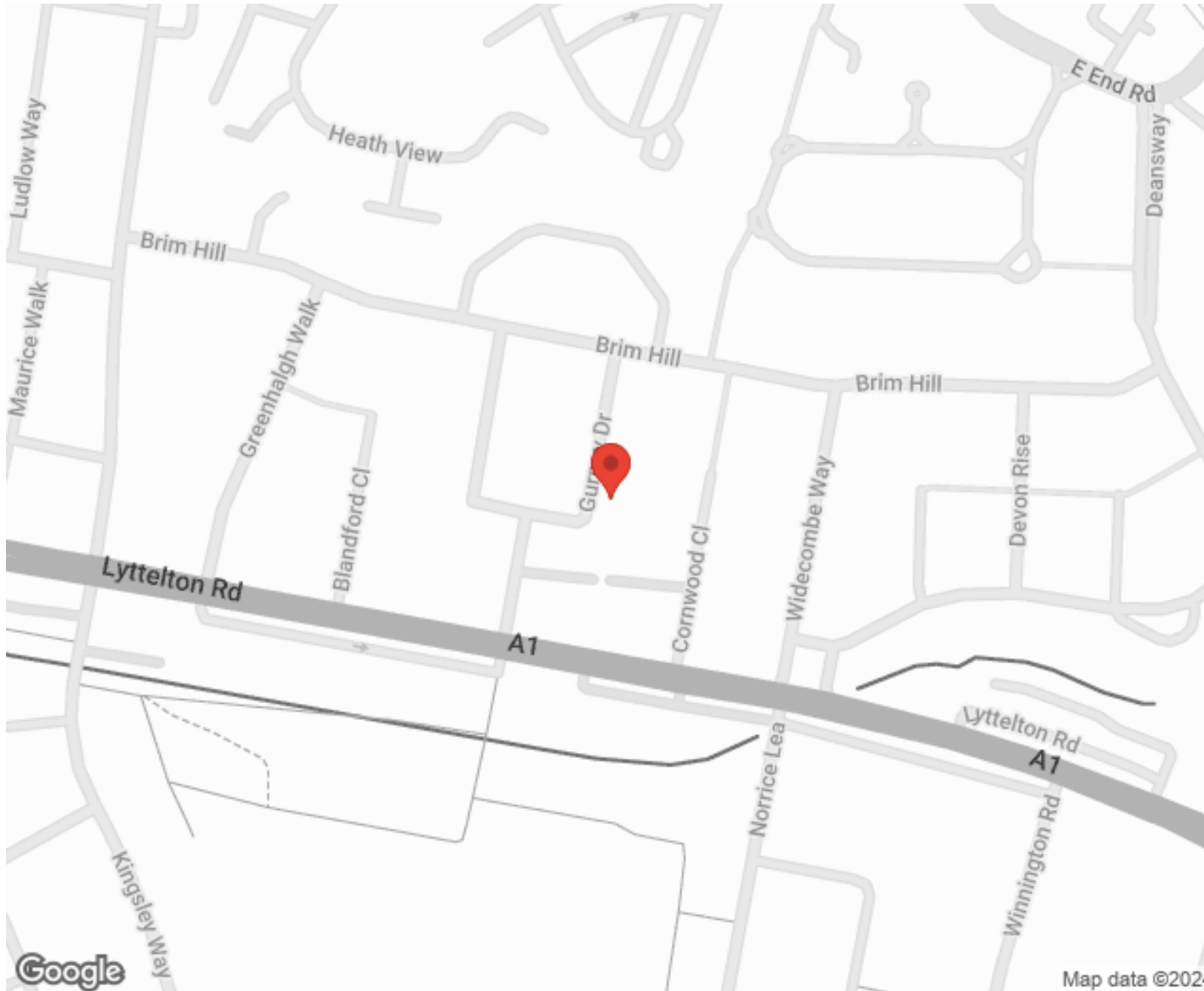
"I used Vita properties to find a flat recently and it was an overall professional, personalised and positive experience. Saira went the extra mile to accommodate to our needs and quick to help us whenever possible."



**MORE INFO, PICTURES,
CONTACT ON
OUR WEBSITE**



"Vita Properties is a very professional agency. My experience with them was incredible and the entire team was very helpful and kind throughout the renting process. I'd highly recommend!"



SCAN FOR MORE
GOOGLE REVIEWS






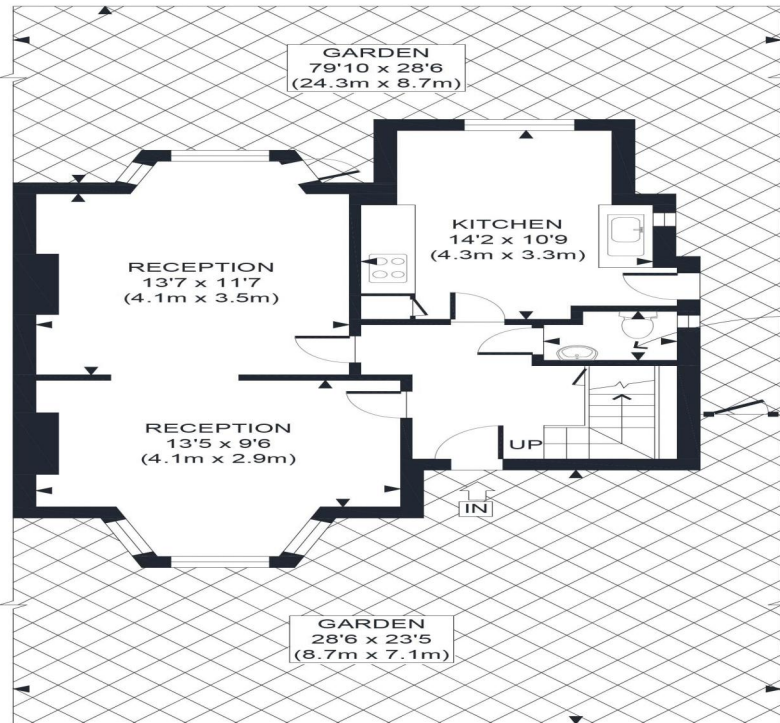
Google



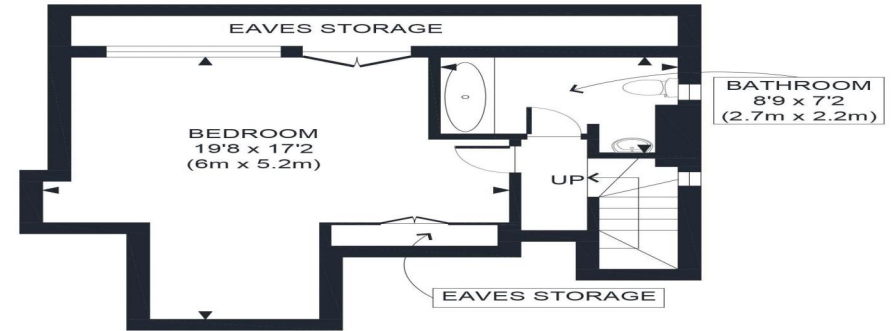
4.9 Stars | 132 Reviews

Find us on social media

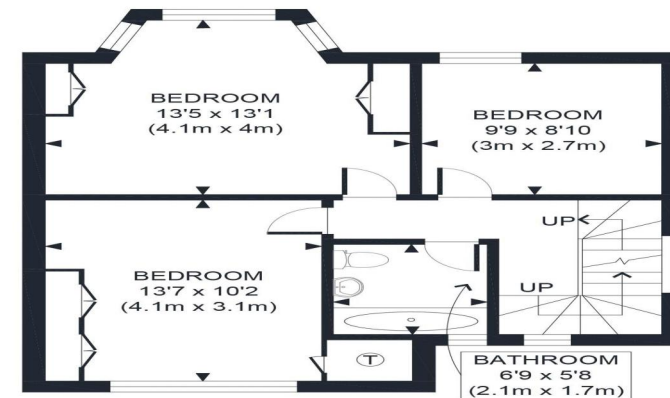
-  vitaproperties
-  VitaProperties
-  VitaProperties



GROUND FLOOR
GROSS INTERNAL
FLOOR AREA 585 SQ FT



SECOND FLOOR
GROSS INTERNAL
FLOOR AREA 419 SQ FT



FIRST FLOOR
GROSS INTERNAL
FLOOR AREA 530 SQ FT

APPROX. GROSS INTERNAL FLOOR AREA WITH EAVES STORAGE 1534 SQ FT / 143 SQM
 APPROX. GROSS INTERNAL FLOOR AREA WITHOUT EAVES STORAGE 1453 SQ FT / 135 SQM
 Ref: Copyright **photoplan**

Disclaimer: Floor plan measurements are approximate and are for illustrative purposes only.
 While we do not doubt the floor plan accuracy and completeness, you or your advisors should
 conduct a careful, independent investigation of the property in respect of monetary valuation