



## Clive Court, Maida Vale, London, W9 .| £1,395,000

- Fully refurbished throughout
- Wooden floors
- Brand new double glazed windows
- Porter

- Off street parking
- Large living space

"Vita Properties have been tremendously helpful throughout the process of securing/renting my flat. Informative about the property, prompt communication, easy to use dashboard for sharing of information, and pleasant to work with. Highly recommend!"

Offered chain free is this this spacious (approx 1445 sq ft), fully refurbished throughout three bedroom apartment located on the ground floor of an elegant apartment building situated in a prime location being close to a range of shops and amenities of Little Venice and Maida Vale.

With portorage and an allocated off street parking space, the apartment further benefits from 2 bathrooms, brand new double glazed windows and a fully fitted kitchen.

Clive Court is a beautiful period apartment building which offers a fantastic location close to Regent's Park, Maida Vale and Lord's Cricket Ground.



Oliver Kent

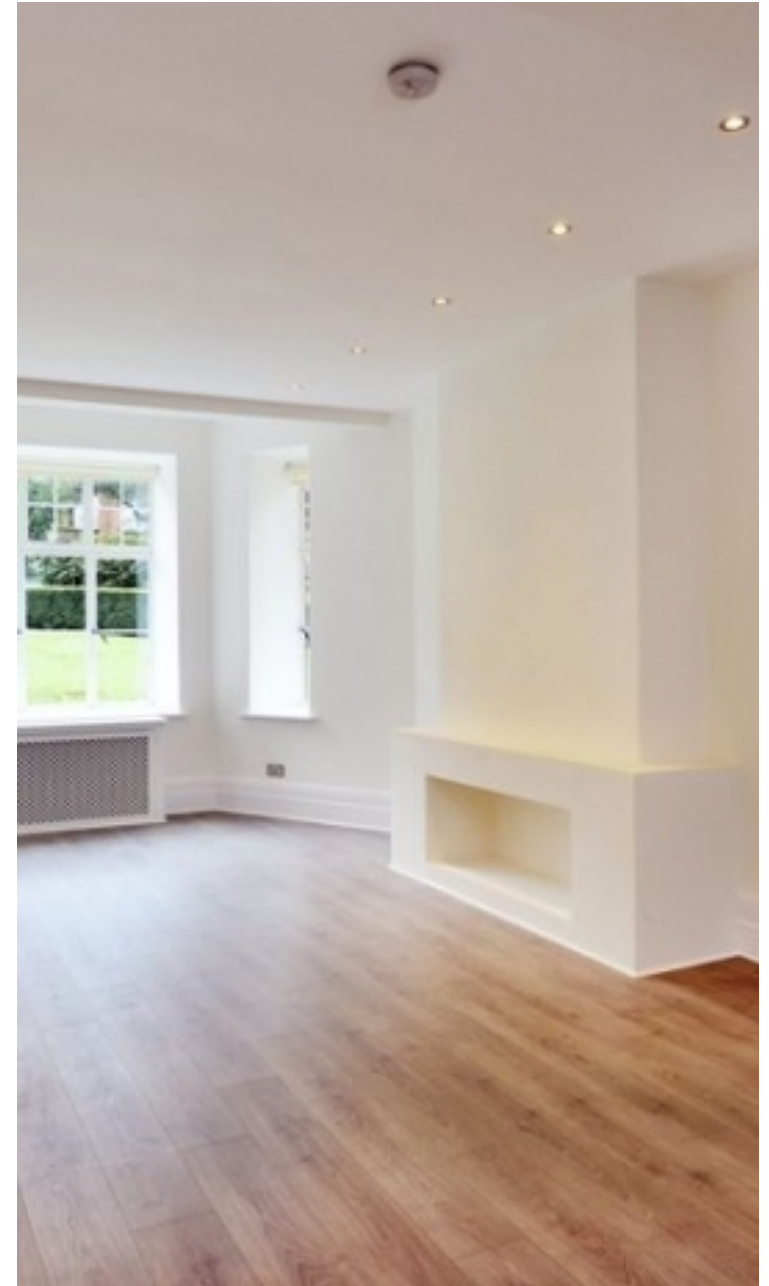
✉ [oliver.kent@vitaproperties.uk](mailto:oliver.kent@vitaproperties.uk)

☎ +4477 7274 0351



"I was very impressed with Vita and their network of buyers. When the sale of my flat fell through (twice) they worked extremely hard to find new buyers in a difficult market - thank you!"

---



"Working with Vita properties has been a smooth experience! No complaints at all. Our letting agent, Diana has been fantastic and very helpful throughout the whole process. I would highly recommend both Vita properties and Diana."

---





"I used Vita properties to find a flat recently and it was an overall professional, personalised and positive experience. Saira went the extra mile to accommodate to our needs and quick to help us whenever possible."

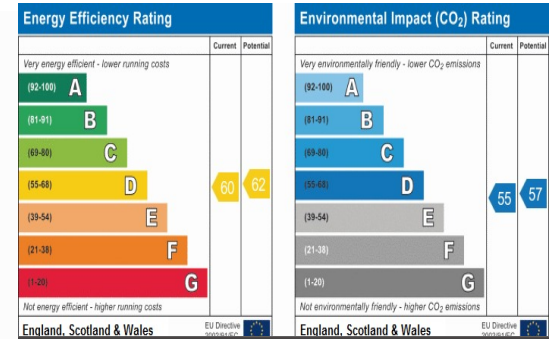
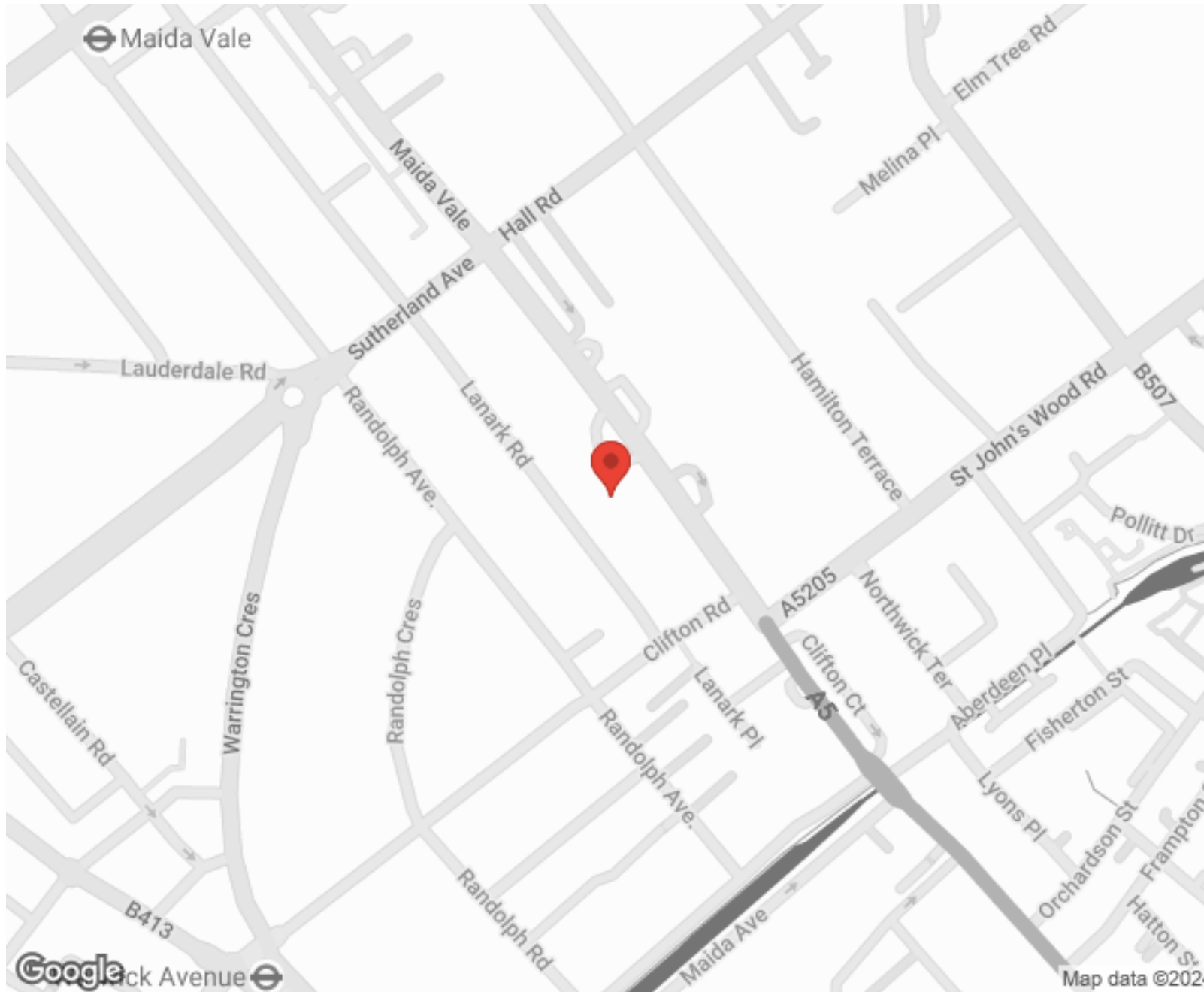
---



**MORE INFO, PICTURES,  
CONTACT ON  
OUR WEBSITE**



"Vita Properties is a very professional agency. My experience with them was incredible and the entire team was very helpful and kind throughout the renting process. I'd highly recommend!"



SCAN FOR MORE  
GOOGLE REVIEWS



Google

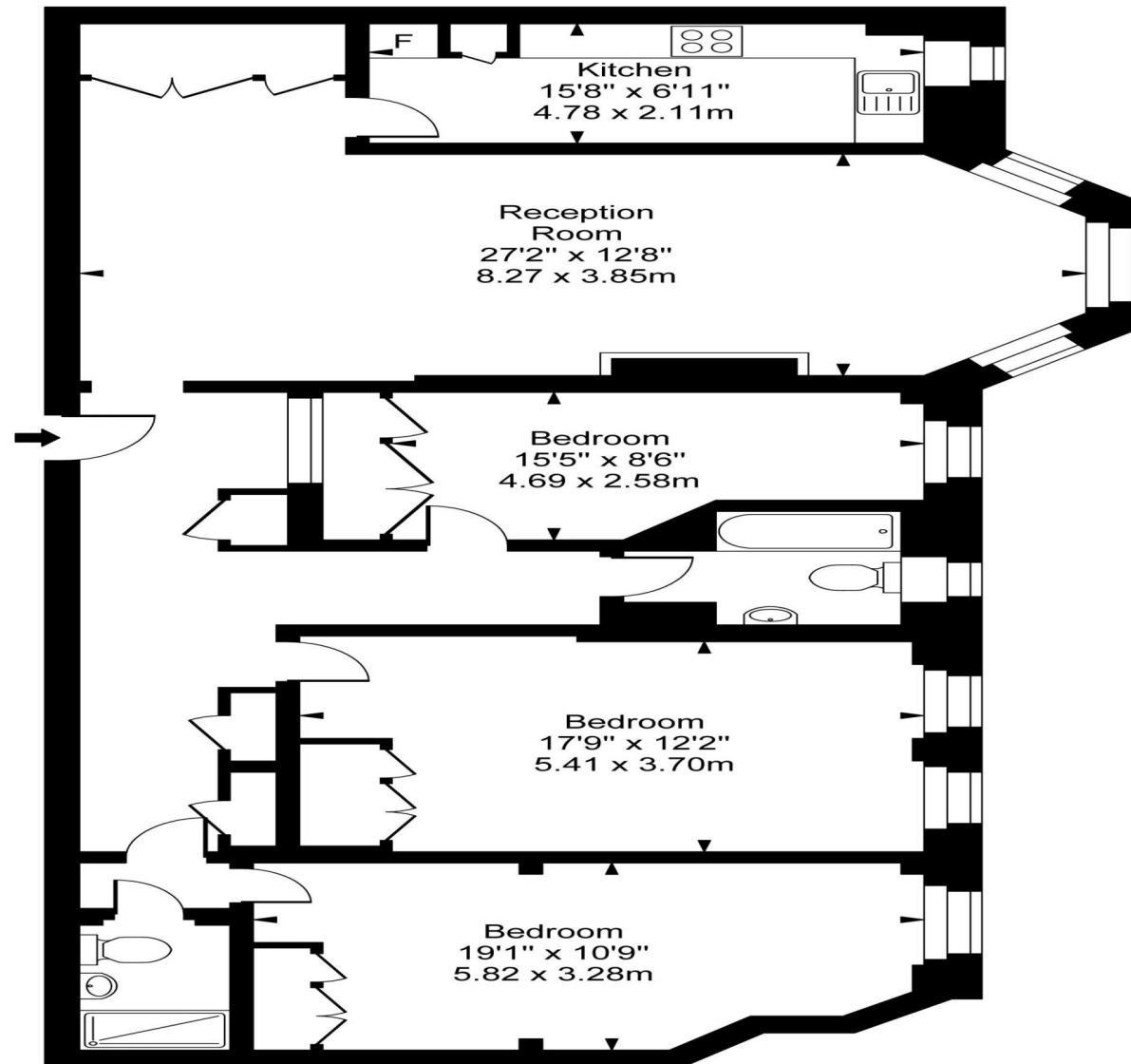


4.9 Stars | 132 Reviews

Find us on social media

- vitaproperties
- VitaProperties
- VitaProperties

# Clive Court



Ground Floor

Approx Gross Internal Area **1445 Sq Ft - 134.30 Sq M**

For Illustration Purposes Only - Not To Scale  
Floor plan by [www.creativeplanetlk.com](http://www.creativeplanetlk.com)

