



Streatley Place, Hampstead, London, NW3 .| £765

- Available 23 January 2020
- Moments to Hampstead Village
- Onsite portorage and use of the gymnasium within the main development.
- Patio

- Modern finish
- Parking

"Vita Properties have been tremendously helpful throughout the process of securing/renting my flat. Informative about the property, prompt communication, easy to use dashboard for sharing of information, and pleasant to work with. Highly recommend!"

Available 23 January 2020 - A three bedroom terraced house located at the heart of Hampstead Village within a sought after gated development.

The accommodation is presented in good condition and comprises a 20' reception/dining room, modern fitted kitchen, master bedroom with en suite shower room/dressing room, two further bedrooms and a family bathroom. Benefits include onsite portorage and use of the gymnasium within the main development.

Ideally located with easy access to Hampstead Heath and moments from Hampstead High Street with its many fashionable shops, restaurants and transport facilities.



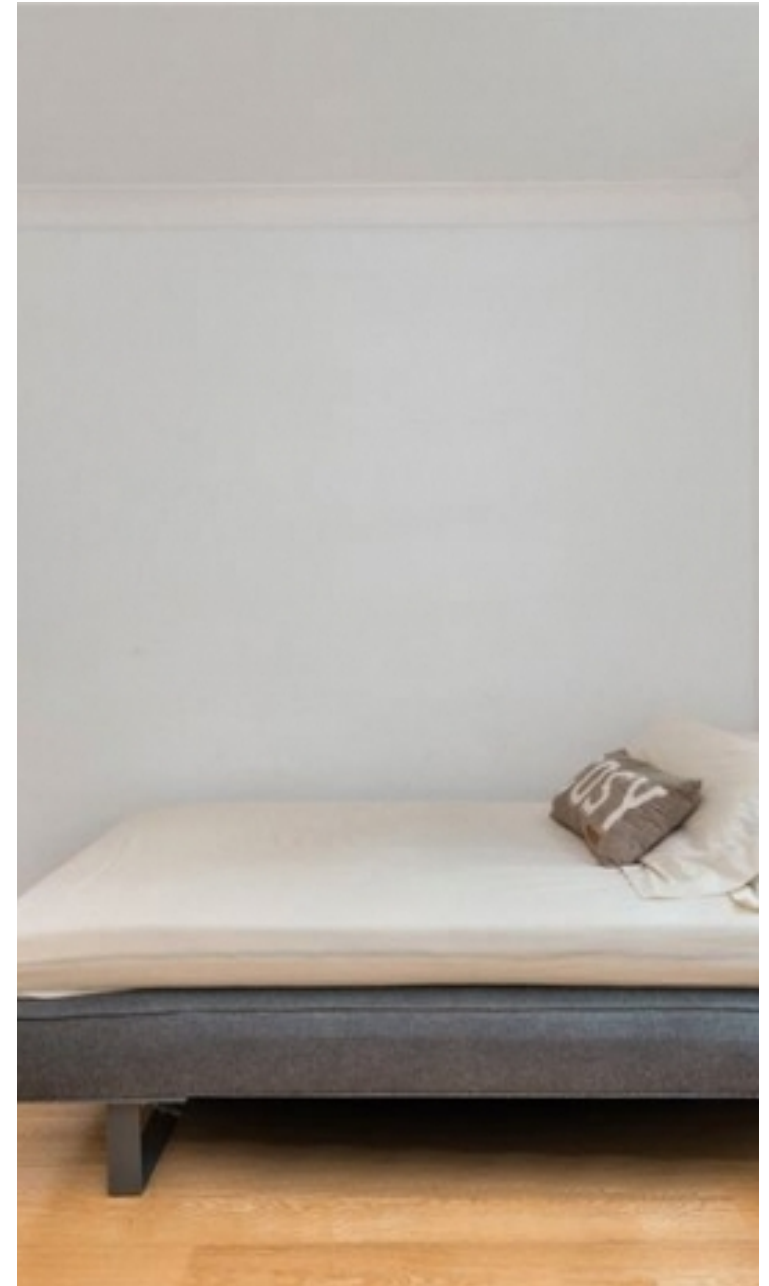
Oliver Kent

✉ oliver.kent@vitaproperties.uk
☎ +4477 7274 0351



🏠	House
🔑	Available to Let
🛏️	x 3
🚿	x 1
🚶	x 2

"I was very impressed with Vita and their network of buyers. When the sale of my flat fell through (twice) they worked extremely hard to find new buyers in a difficult market - thank you!"



"Working with Vita properties has been a smooth experience! No complaints at all. Our letting agent, Diana has been fantastic and very helpful throughout the whole process. I would highly recommend both Vita properties and Diana."



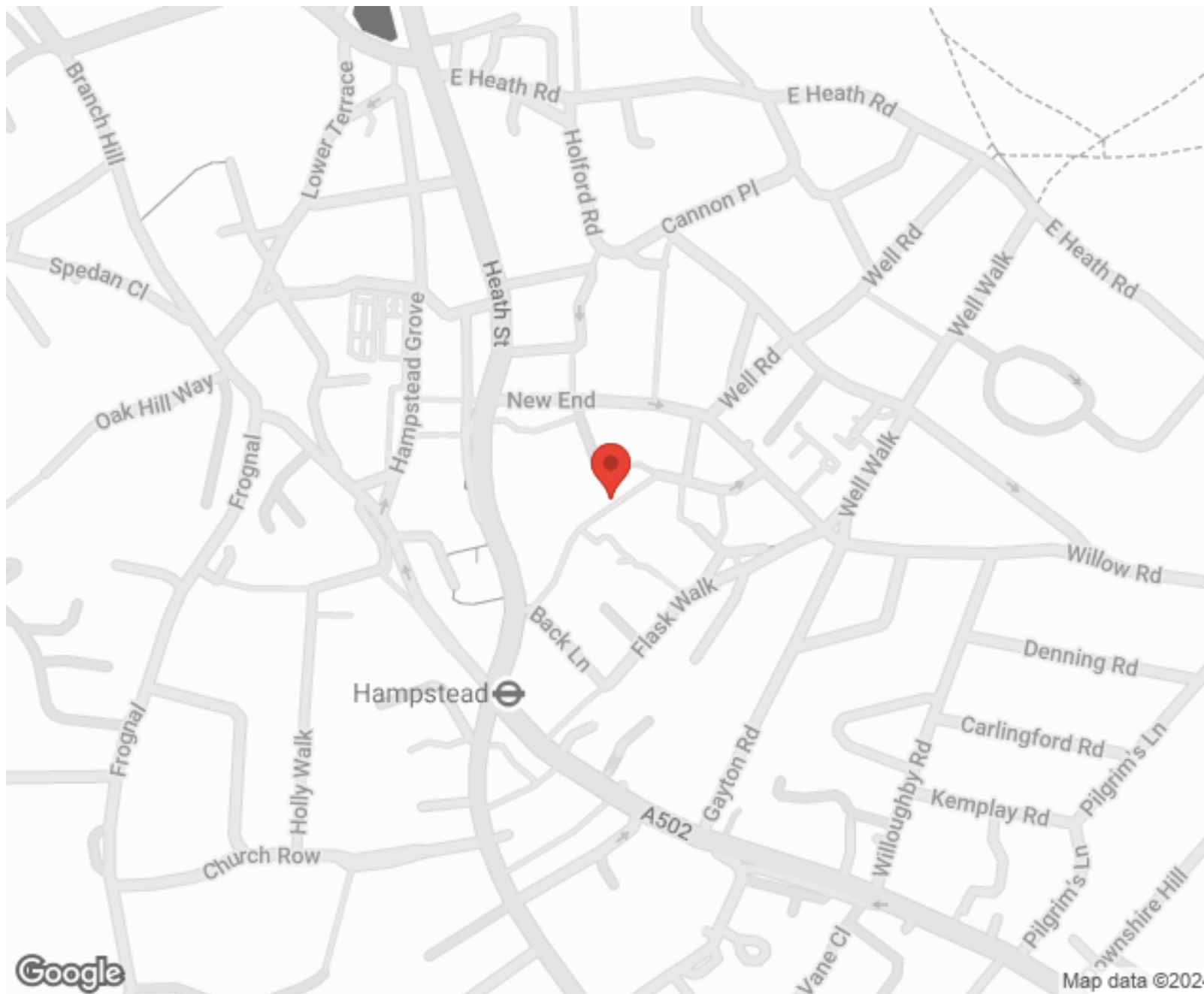
"I used Vita properties to find a flat recently and it was an overall professional, personalised and positive experience. Saira went the extra mile to accommodate to our needs and quick to help us whenever possible."



**MORE INFO, PICTURES,
CONTACT ON
OUR WEBSITE**



"Vita Properties is a very professional agency. My experience with them was incredible and the entire team was very helpful and kind throughout the renting process. I'd highly recommend!"



SCAN FOR MORE
GOOGLE REVIEWS



Google




4.9 Stars | 132 Reviews

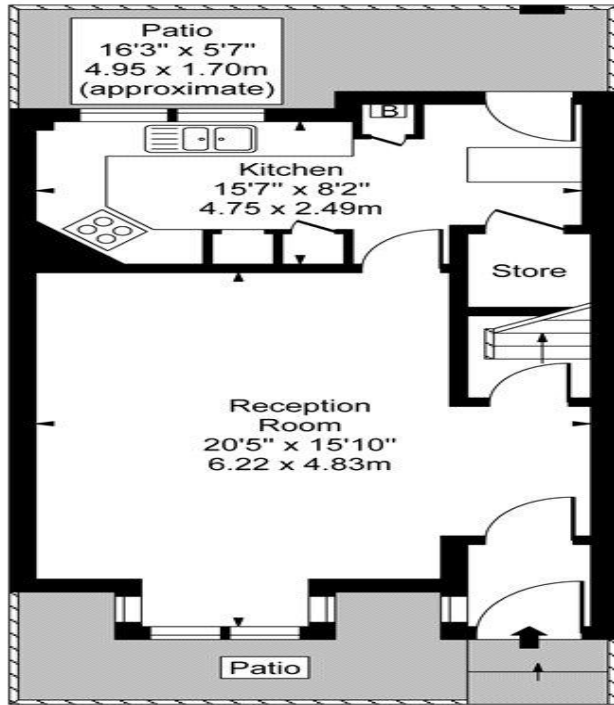
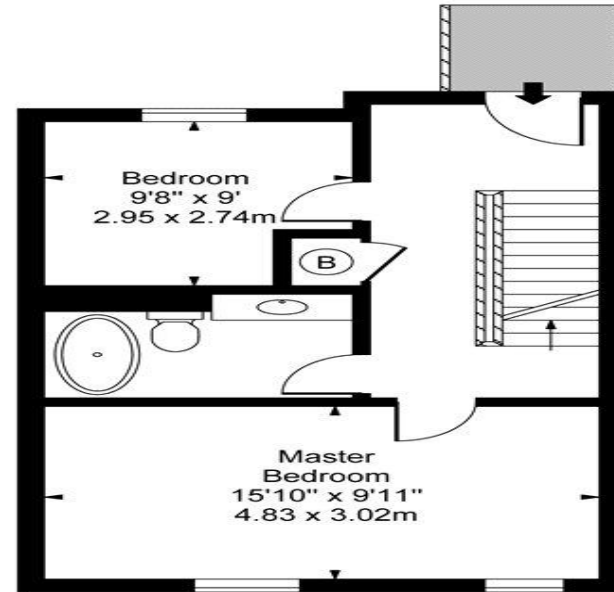
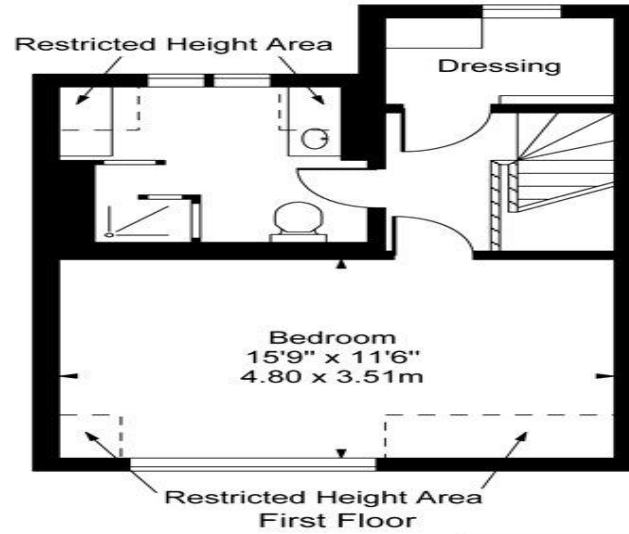
Find us on social media

 vitaproperties

 VitaProperties

 VitaProperties

Streatley Place, NW3



Lower Ground Floor

Raised Ground Floor

Approx Gross Internal Area **1250 Sq Ft - 116.13 Sq M**
(Including Restricted Height Area)