



Arkwright Road, Hampstead, London, NW3 .| £995

- 3 Large Double Bedrooms
- Working Gas Fireplace
- Available 18th December
- Complimentary X-Mas Hamper To All Move In's Before 2019!

"Vita Properties have been tremendously helpful throughout the process of securing/renting my flat. Informative about the property, prompt communication, easy to use dashboard for sharing of information, and pleasant to work with. Highly recommend!"

MOVE IN WITH NO TENANT FEE'S -

- We are excited to present this fully extended 3 bedroom, 3 bathroom apartment set within moments of Hampstead Village. Having been totally renovated this modern apartment offers a stunning reception room opening onto a decked terrace and leading down to a large private garden, a fully fitted open plan kitchen, 3 large double bedrooms, 2 fully tiled ensuite's and a guest bathroom as well as one allocated parking space.

Arkwright Road is located just off Finchley Road and Fitzjohns Avenue offering easy access to all the surrounding areas including the northern line and Finchley's road overland, Jubilee and Metropolitan train lines.



Oliver Kent

✉ oliver.kent@vitaproperties.uk

☎ +4477 7274 0351



🏠 Flat
🔑 Under
Negotiation
🛏 x 3
🚿 x 1
🚻 x 3

"I was very impressed with Vita and their network of buyers. When the sale of my flat fell through (twice) they worked extremely hard to find new buyers in a difficult market - thank you!"



"Working with Vita properties has been a smooth experience! No complaints at all. Our letting agent, Diana has been fantastic and very helpful throughout the whole process. I would highly recommend both Vita properties and Diana."



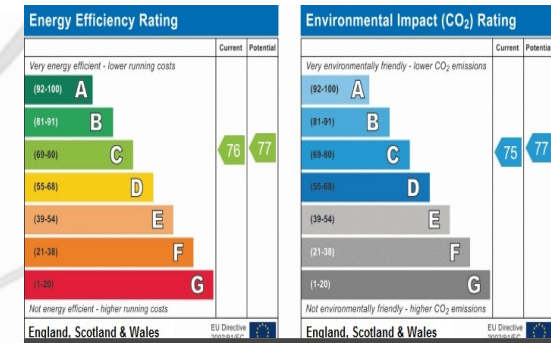
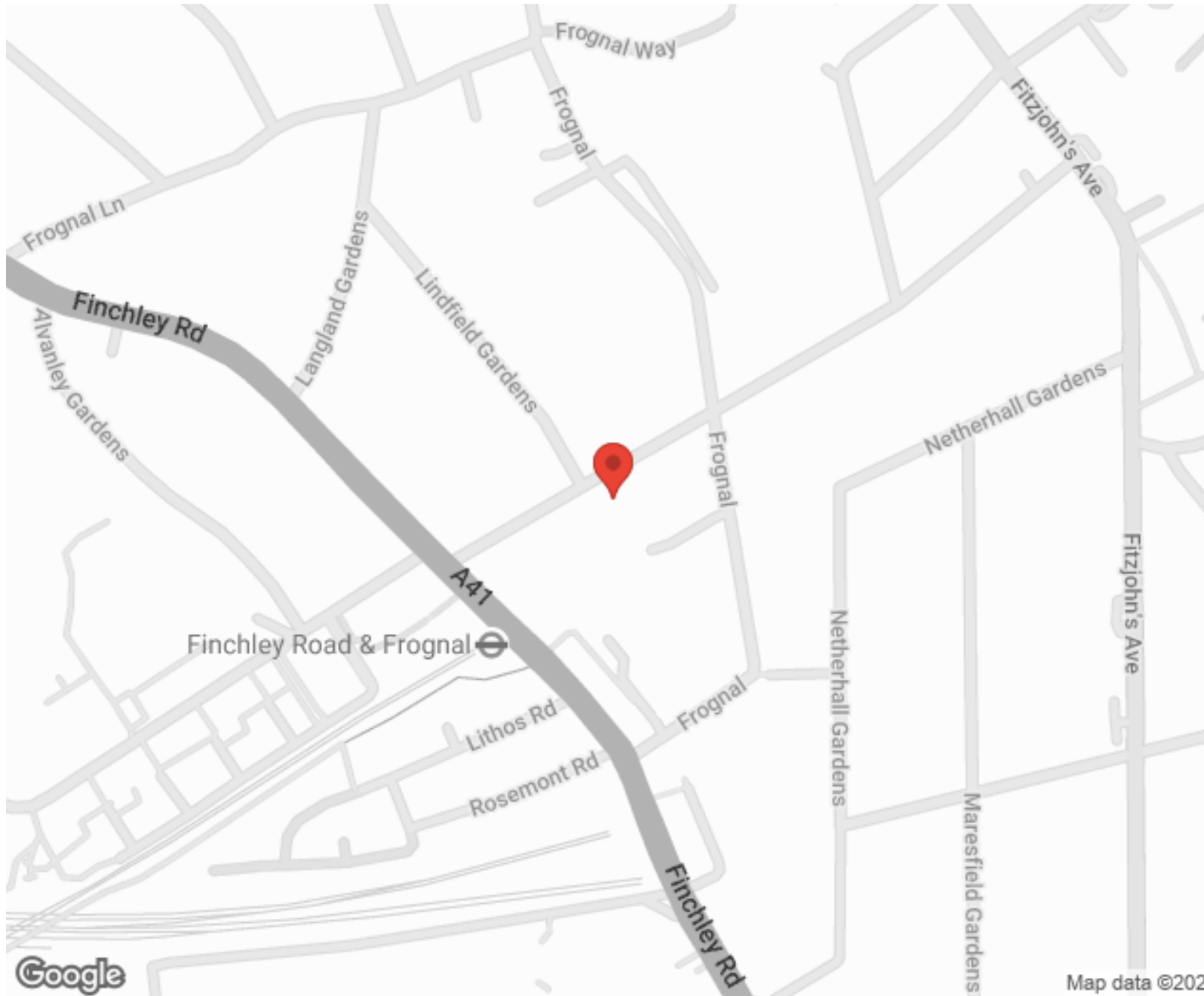
"I used Vita properties to find a flat recently and it was an overall professional, personalised and positive experience. Saira went the extra mile to accommodate to our needs and quick to help us whenever possible."



**MORE INFO, PICTURES,
CONTACT ON
OUR WEBSITE**



"Vita Properties is a very professional agency. My experience with them was incredible and the entire team was very helpful and kind throughout the renting process. I'd highly recommend!"



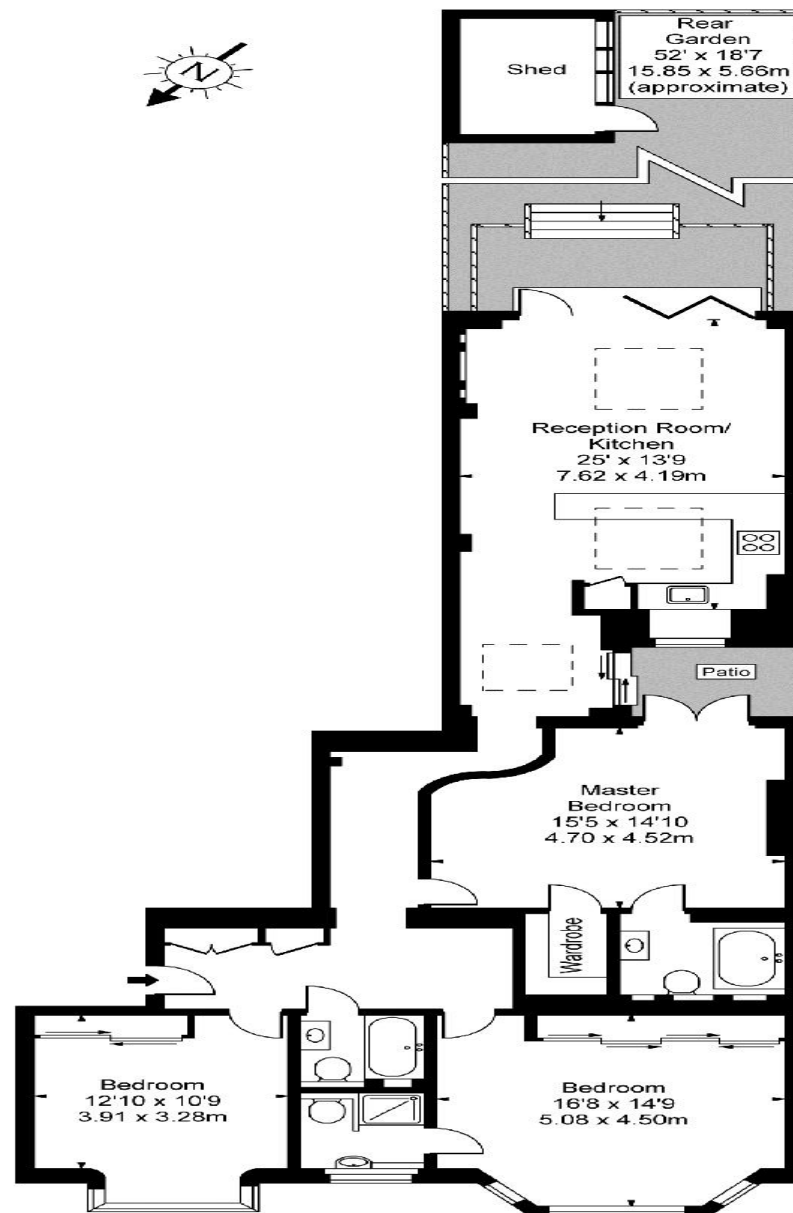
SCAN FOR MORE GOOGLE REVIEWS

Google
★★★★★
4.9 Stars | 132 Reviews

Find us on social media

- vitaproperties
- VitaProperties
- VitaProperties

Arkwright Road, NW3



Ground Floor

Approx. Gross Internal Area 1400 Sq Ft - 130.06 Sq M

For Illustration Purposes Only - Not To Scale Floor Plan by www.nogaphotostudio.com Ref: No.6973

This floor plan should be used as a general outline for guidance only. Any intending purchaser or lessee should satisfy themselves by inspection, searches, enquiries and full survey as to the correctness of each statement. Any areas, measurements or distances quoted are approximate and should not be used to value a property or be the basis of any sale or let.