



Avenue Mansions, Finchley Road, Hampstead, London, NW3 .| £1,095

- Brand newly refurbished to high spec
- Lift
- Onsite porter and management
- Bathroom fitted with natural stone

- Communal gardens
- Available immediately

"Vita Properties have been tremendously helpful throughout the process of securing/renting my flat. Informative about the property, prompt communication, easy to use dashboard for sharing of information, and pleasant to work with. Highly recommend!"

Available immediately is this beautifully refurbished 4 bedroom apartment situated on the top (third) floor of a sought after mansion block. The property comprises 2 large reception rooms, a semi open plan fitted kitchen, two bathrooms, excellent storage, a utility room and a designated study, further benefits a separate WC. Avenue Mansions boasts highly secluded communal gardens and 24 hour on site porter service. The development is a short walk to West Hampstead Village offering a selection of local shops, restaurants and public transportation that includes West Hampstead Tube Station (Jubilee Line) and West Hampstead (Thames Link). Avenue Mansions is also within close distance to the popular Hampstead Village and Hampstead Heath. Offered on an unfurnished based.



Oliver Kent

✉ [oliver.kent@vitaproperties.uk](mailto:oliver.kent@vitaproperties.uk)

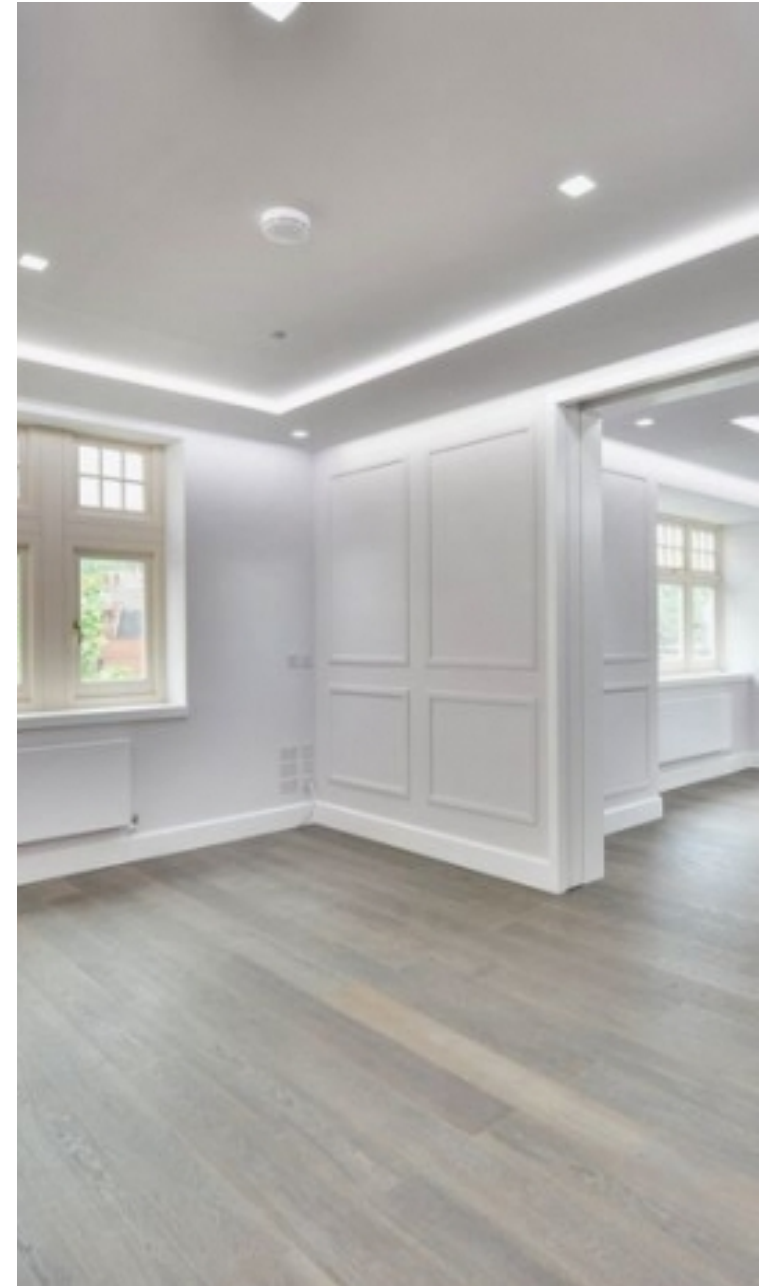
☎ +4477 7274 0351



	Flat
	Under Negotiation
	x 4
	x 2
	x 2

"I was very impressed with Vita and their network of buyers. When the sale of my flat fell through (twice) they worked extremely hard to find new buyers in a difficult market - thank you!"

---



"Working with Vita properties has been a smooth experience! No complaints at all. Our letting agent, Diana has been fantastic and very helpful throughout the whole process. I would highly recommend both Vita properties and Diana."

---



"I used Vita properties to find a flat recently and it was an overall professional, personalised and positive experience. Saira went the extra mile to accommodate to our needs and quick to help us whenever possible."

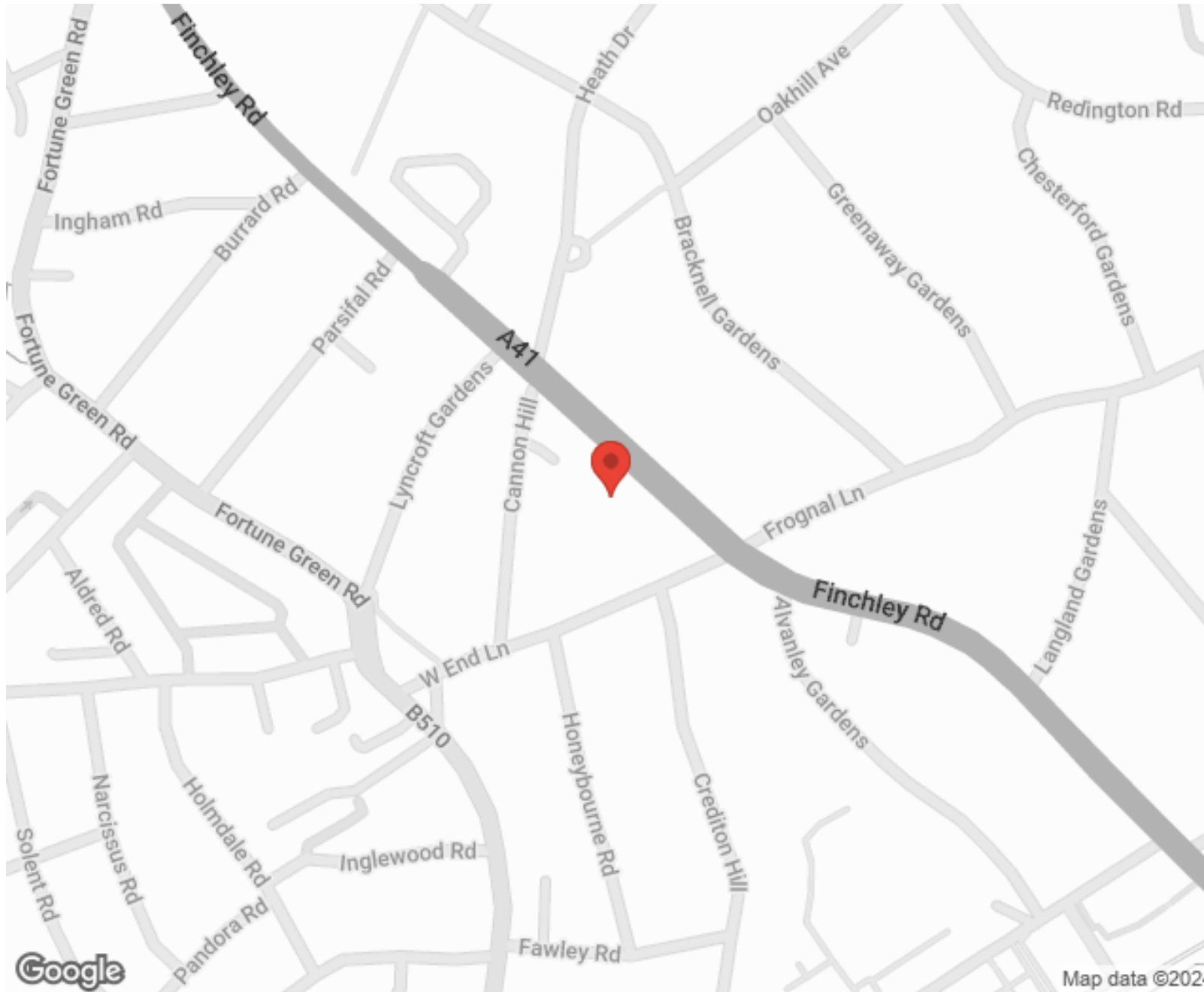
---



**MORE INFO, PICTURES,  
CONTACT ON  
OUR WEBSITE**



"Vita Properties is a very professional agency. My experience with them was incredible and the entire team was very helpful and kind throughout the renting process. I'd highly recommend!"



Energy Efficiency Rating		Environmental Impact (CO <sub>2</sub> ) Rating	
Very energy efficient - lower running costs	Current	Potential	Very environmentally friendly - lower CO <sub>2</sub> emissions
(92-100) <b>A</b>			(92-100) <b>A</b>
(81-91) <b>B</b>			(81-91) <b>B</b>
(69-80) <b>C</b>			(69-80) <b>C</b>
(55-68) <b>D</b>			(55-68) <b>D</b>
(39-54) <b>E</b>			(39-54) <b>E</b>
(21-38) <b>F</b>			(21-38) <b>F</b>
(1-20) <b>G</b>			(1-20) <b>G</b>
Not energy efficient - higher running costs			Not environmentally friendly - higher CO <sub>2</sub> emissions
<small>England, Scotland &amp; Wales</small>		<small>EU Directive</small>	<small>England, Scotland &amp; Wales</small>

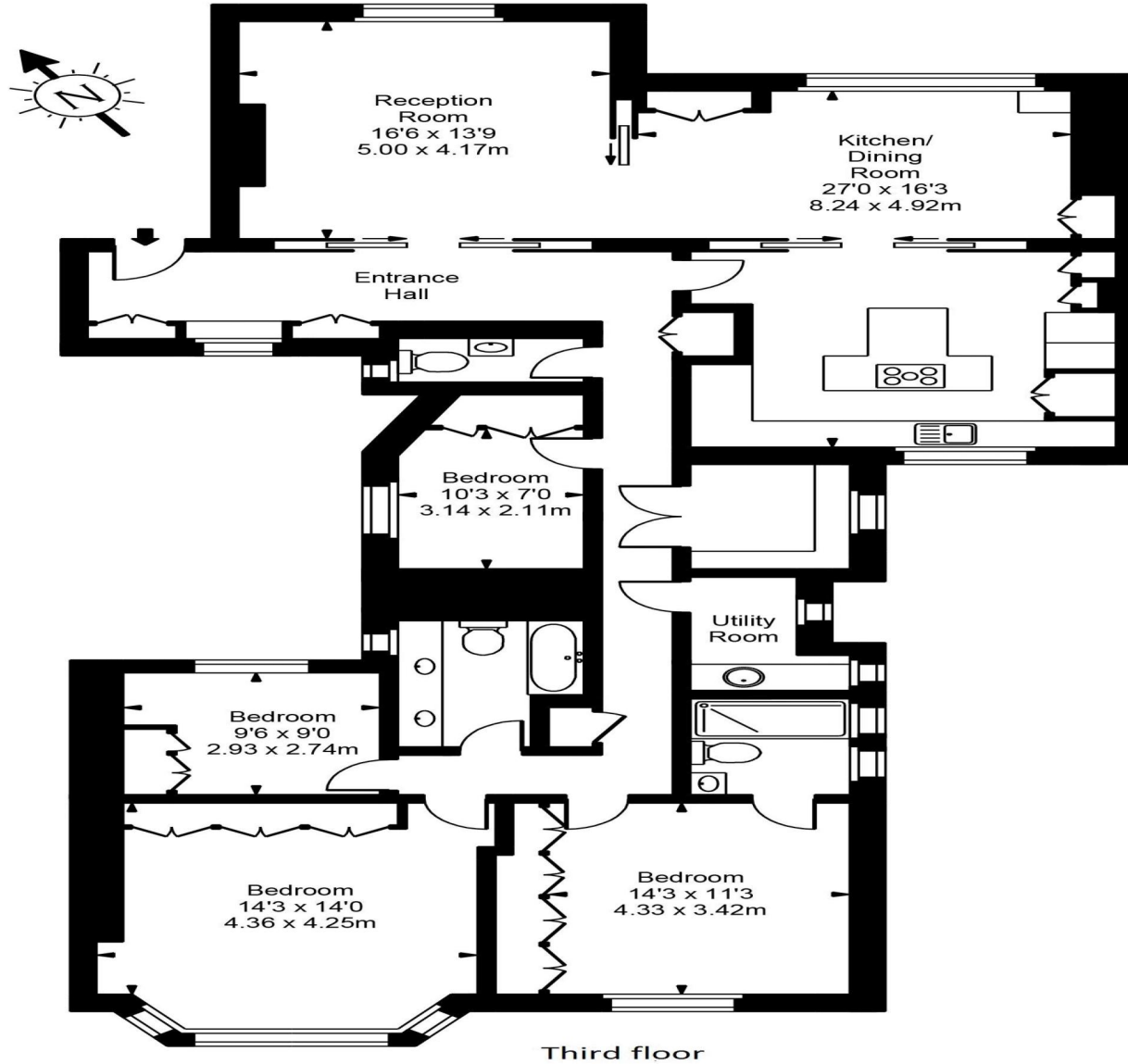
SCAN FOR MORE GOOGLE REVIEWS

Google  
★★★★★  
4.9 Stars | 132 Reviews

Find us on social media

- vitaproperties
- VitaProperties
- VitaProperties

# Avenue Mansions



**Approx Gross Internal Area 1869 Sq Ft - 173.66 Sq M**

FOR ILLUSTRATIVE PURPOSES ONLY. NOT TO SCALE.

Whilst every attempt has been made to ensure the accuracy of the floorplan shown, all measurements, positioning, fixtures, fittings and any other data shown are an approximate interpretation for illustrative purposes only and are not to scale. No responsibility is taken for any error, omission, miss-statement or use of data shown.  
Floor plan by [www.bestangle.co.uk](http://www.bestangle.co.uk)