



Brondesbury Villas, Queens Park, London, NW6 .| £950,000

- An interior designed 2 bedroom south facing garden apartment
- Private entrance
- Soft cement flooring with under floor heating throughout
- Beautiful entertaining space
- A multi purpose outhouse
- Crittall windows
- Share of freehold & offered chain free

"Vita Properties have been tremendously helpful throughout the process of securing/renting my flat. Informative about the property, prompt communication, easy to use dashboard for sharing of information, and pleasant to work with. Highly recommend!"

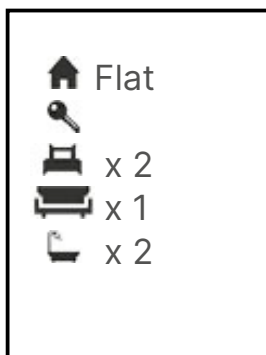
As main agents we are delighted to bring this beautifully interior designed two bed, two bath to the market. When you enter this apartment you are welcomed by a large hallway with high ceilings, instantly giving a fantastic sense of space. Straight ahead is the stunning open-plan kitchen diner with fabulous floor to ceiling windows flooding the room with natural light, this offers access onto the impressive south facing garden area. Follow the garden to the back and you will find a further surprise; your very own outhouse which is an ideal space to be used as an office, for summer entertaining or useful storage space. This beautiful apartment offers two generously proportioned bedrooms both offering large built in wardrobes, the master bedroom also benefits further from a built-in dressing table and en-suite. Further benefits include under floor heating, concrete flooring, feature walls and plenty of storage.

This property is well situated being within walking distance of Queens Park Station & High Street, Kilburn High Road Station (Overground) and Kilburn Park Station (Bakerloo Line).



Oliver Kent

✉ oliver.kent@vitaproperties.uk
☎ +4477 7274 0351



"I was very impressed with Vita and their network of buyers. When the sale of my flat fell through (twice) they worked extremely hard to find new buyers in a difficult market - thank you!"



"Working with Vita properties has been a smooth experience! No complaints at all. Our letting agent, Diana has been fantastic and very helpful throughout the whole process. I would highly recommend both Vita properties and Diana."



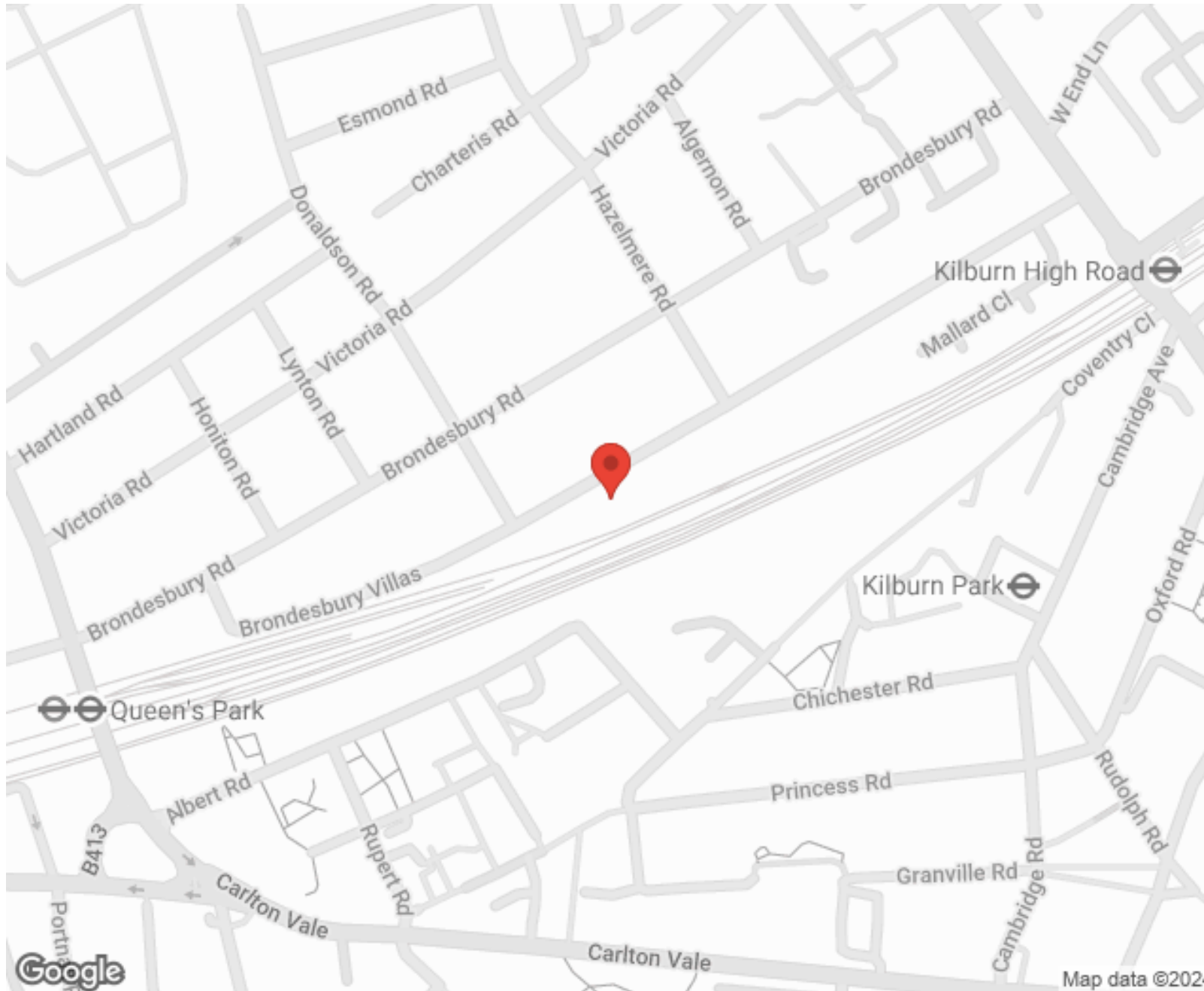
"I used Vita properties to find a flat recently and it was an overall professional, personalised and positive experience. Saira went the extra mile to accommodate to our needs and quick to help us whenever possible."



**MORE INFO, PICTURES,
CONTACT ON
OUR WEBSITE**



"Vita Properties is a very professional agency. My experience with them was incredible and the entire team was very helpful and kind throughout the renting process. I'd highly recommend!"



SCAN FOR MORE
GOOGLE REVIEWS






Google

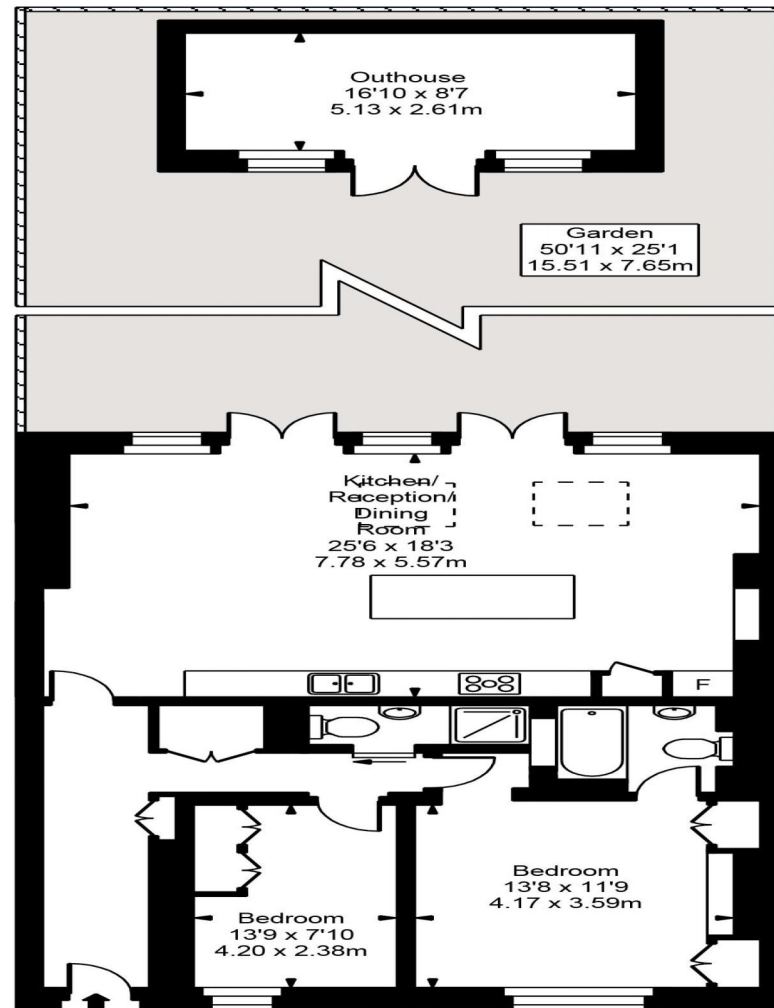


4.9 Stars | 132 Reviews

Find us on social media

-  vitaproperties
-  VitaProperties
-  VitaProperties

Brondesbury Villas



Lower Ground Floor



Approx Gross Internal Area **1229 Sq Ft - 114.16 Sq M**
(Including Outhouse)

FOR ILLUSTRATIVE PURPOSES ONLY. NOT TO SCALE.

Whilst every attempt has been made to ensure the accuracy of the floorplan shown, all measurements, positioning, fixtures, fittings and any other data shown are an approximate interpretation for illustrative purposes only and are not to scale. No responsibility is taken for any error, omission, miss-statement or use of data shown. Floor plan by www.bestangle.co.uk