



Woods Mews, Mayfair, London, W1K .| £2,250

- Located in a quiet mews in the heart of Mayfair
- Balcony & Terrace
- Managed
- Recently refurbished

- Furnished
- Available 01 July

"Vita Properties have been tremendously helpful throughout the process of securing/renting my flat. Informative about the property, prompt communication, easy to use dashboard for sharing of information, and pleasant to work with. Highly recommend!"

Available 01 July - A superb newly refurbished three bedroom split level maisonette (approx 2,100 sq ft) with a patio garden and two balconies situated on the ground and 1st floors of this smart quiet Mews just off Park Lane.

The apartment benefits from large windows, woods floors, neutral decor and wonderful furnishings and comprises a large reception room, separate dining room/media room with French doors leading on both sides to 2 separate balconies, immaculate fully fitted and equipped kitchen, guest cloakroom, enormous master bedroom with plenty of storage, en suite bathroom with separate cubicle and French doors leading to a good size patio garden, two further good size double bedrooms both with en suite bathrooms.



Oliver Kent

✉ oliver.kent@vitaproperties.uk

☎ +4477 7274 0351



🏠	Flat
🔑	Available to Let
🛏️	x 3
🛋️	x 1
🚿	x 2



"I was very impressed with Vita and their network of buyers. When the sale of my flat fell through (twice) they worked extremely hard to find new buyers in a difficult market - thank you!"



"Working with Vita properties has been a smooth experience! No complaints at all. Our letting agent, Diana has been fantastic and very helpful throughout the whole process. I would highly recommend both Vita properties and Diana."



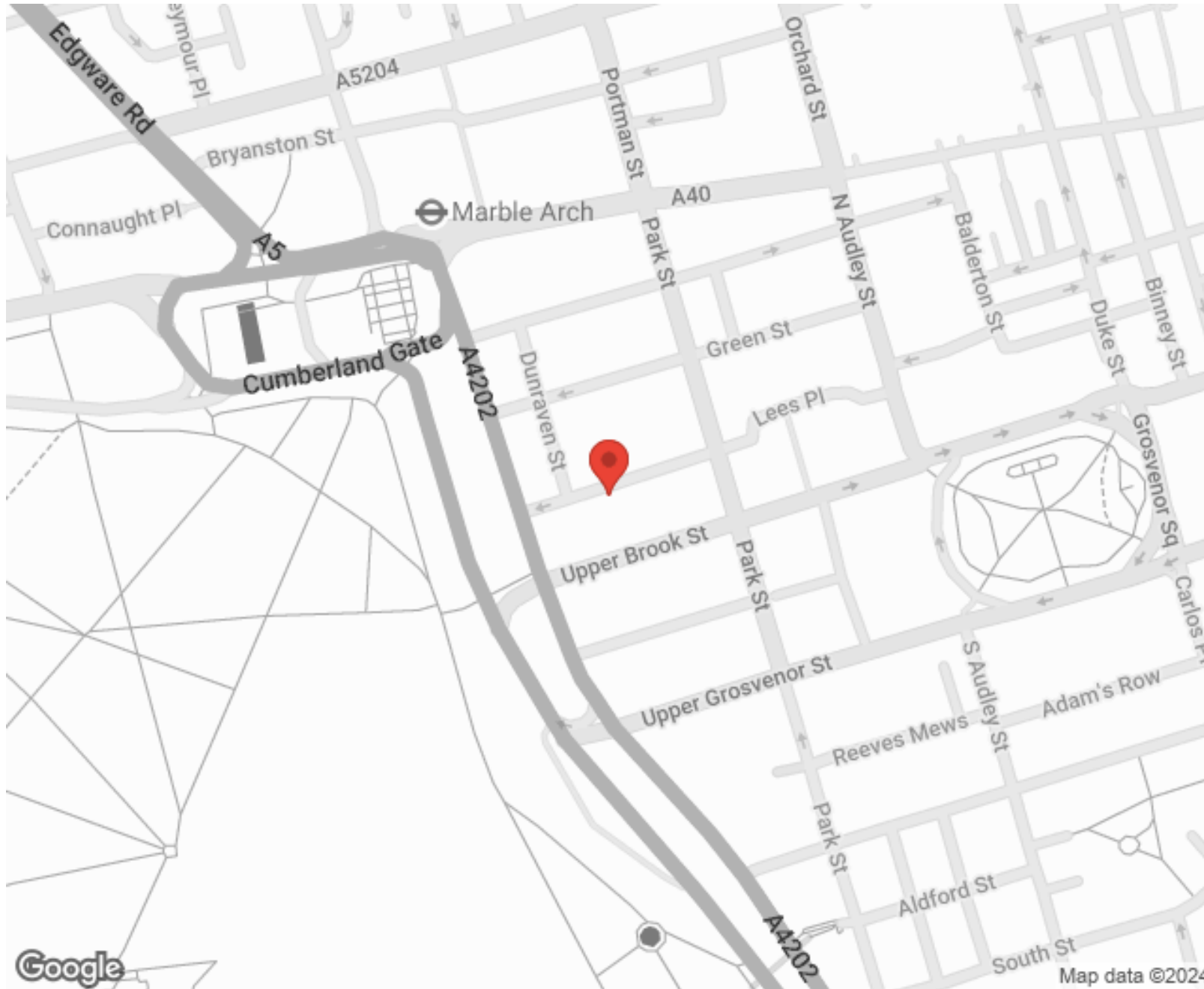
"I used Vita properties to find a flat recently and it was an overall professional, personalised and positive experience. Saira went the extra mile to accommodate to our needs and quick to help us whenever possible."



**MORE INFO, PICTURES,
CONTACT ON
OUR WEBSITE**



"Vita Properties is a very professional agency. My experience with them was incredible and the entire team was very helpful and kind throughout the renting process. I'd highly recommend!"



SCAN FOR MORE
GOOGLE REVIEWS






Google

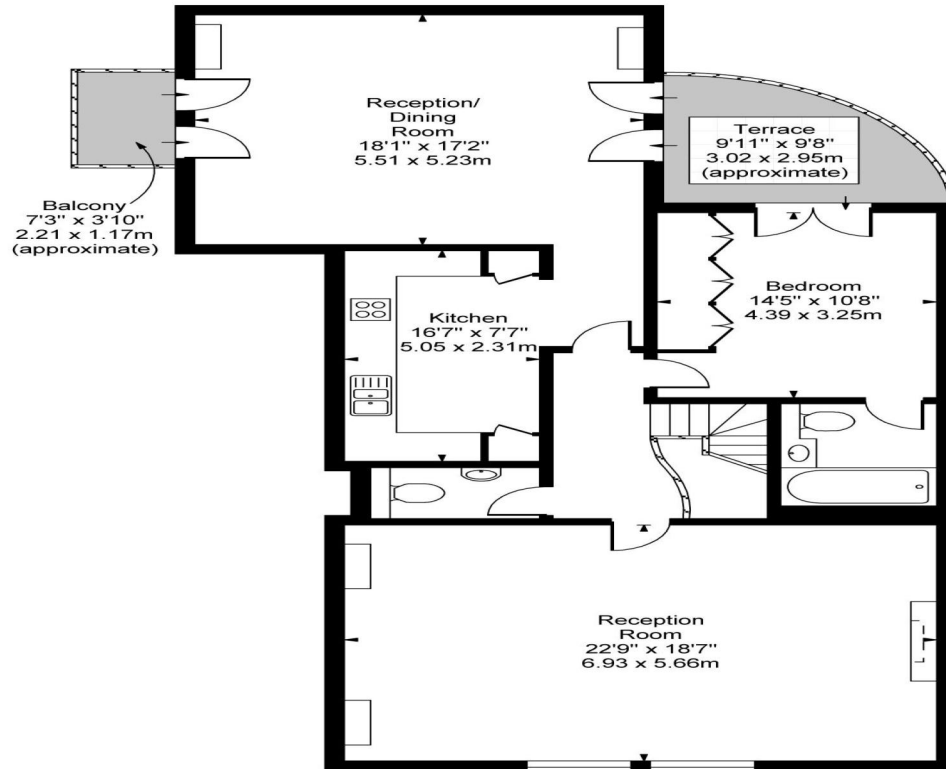


4.9 Stars | 132 Reviews

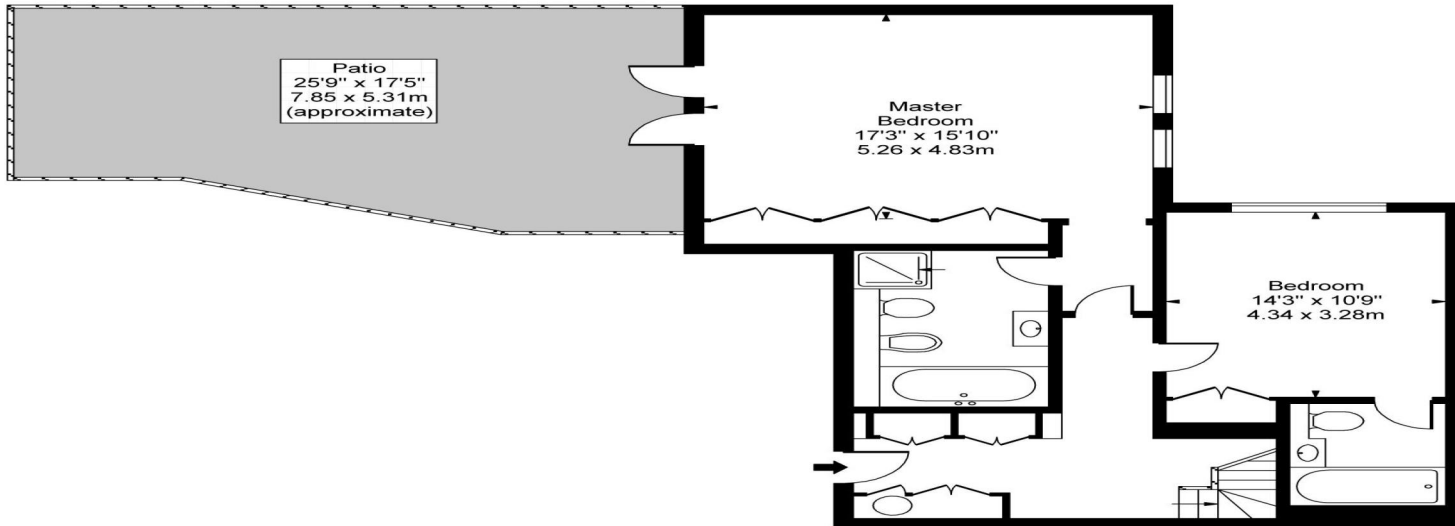
Find us on social media

-  vitaproperties
-  VitaProperties
-  VitaProperties

**Woods Mews,
Mayfair, W1**



First Floor



Ground Floor

Approx Gross Internal Area 2060 Sq Ft - 191.37 Sq M

For Illustration Purposes Only - Not To Scale

Floor Plan by www.bpmmediagroup.com

Ref. No. P44488