



Arkwright Road, Hampstead, London, NW3 .| £3,750

- BRAND NEW DEVELOPMENT
- 4 BEDROOMS : 4 BATHROOMS
- ALLOCATED PARKING
- COMMUNAL GARDEN ACCESS : EPC RATING C

- MANAGED

"Vita Properties have been tremendously helpful throughout the process of securing/renting my flat. Informative about the property, prompt communication, easy to use dashboard for sharing of information, and pleasant to work with. Highly recommend!"

Providing over 2,766 sq ft of stunning accommodation that opens onto a private roof terrace is this fabulous 4 bedroom apartment forming part of an exciting re-development. Created from an imposing period house in Hampstead, the flat features luxury finishes throughout and offers Comfort Cooling and integrated WiFi. Also included are use of a communal garden and gated off street parking. Arkwright Road is located close to Hampstead Village and local schools. The nearest transport includes Hampstead Northern line tube (0.3 miles), Finchley Road tube (0.5 miles) and Finchley Road & Frognal Overground (0.3 miles).



Oliver Kent

✉ [oliver.kent@vitaproperties.uk](mailto:oliver.kent@vitaproperties.uk)  
☎ +4477 7274 0351



|    |                  |
|----|------------------|
| 🏠  | Flat             |
| 🔑  | Available to Let |
| 🛏️ | x 4              |
| 🛋️ | x 1              |
| 🪑  | x 4              |



"I was very impressed with Vita and their network of buyers. When the sale of my flat fell through (twice) they worked extremely hard to find new buyers in a difficult market - thank you!"

---



"Working with Vita properties has been a smooth experience! No complaints at all. Our letting agent, Diana has been fantastic and very helpful throughout the whole process. I would highly recommend both Vita properties and Diana."

---





"I used Vita properties to find a flat recently and it was an overall professional, personalised and positive experience. Saira went the extra mile to accommodate to our needs and quick to help us whenever possible."

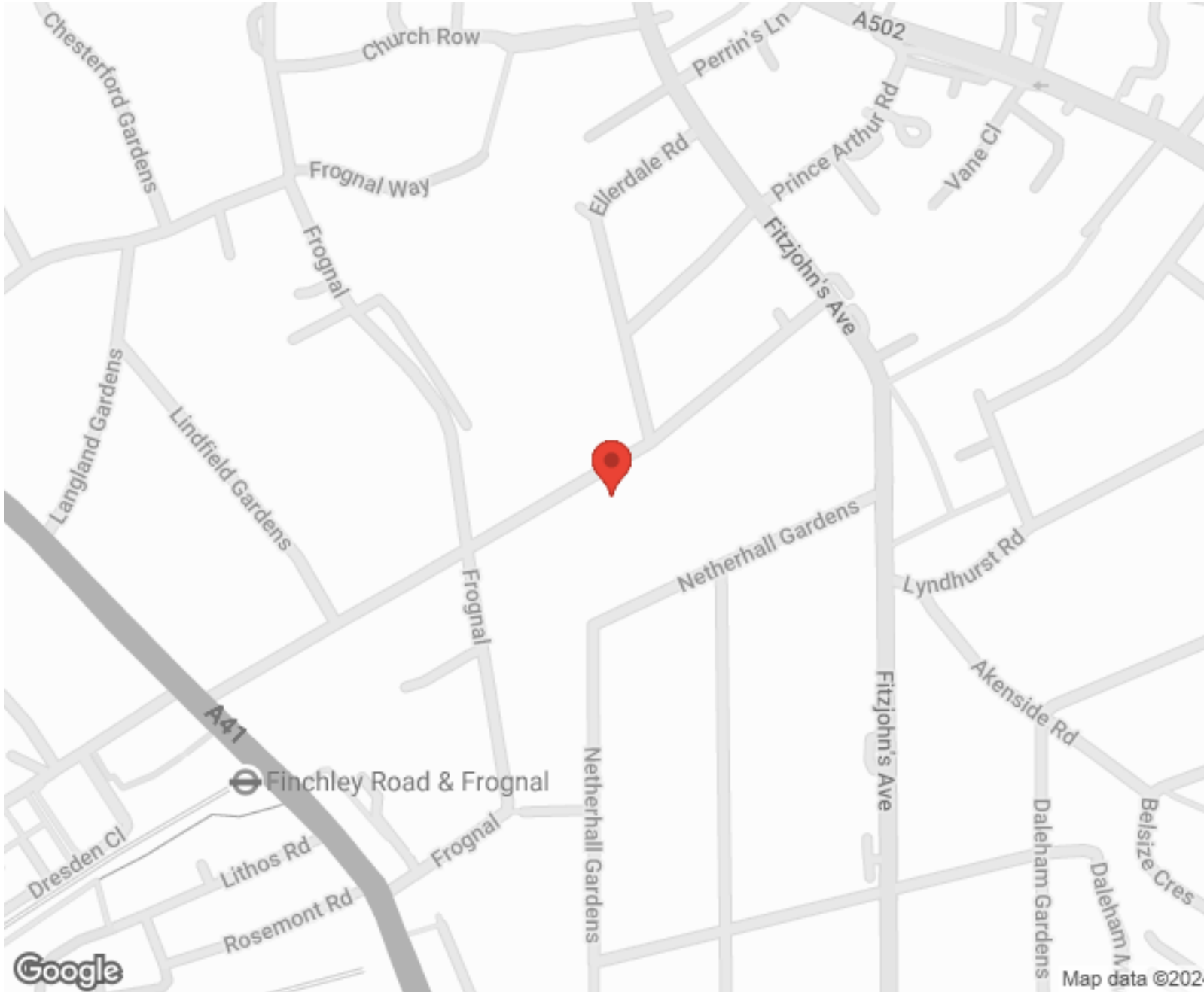
---



**MORE INFO, PICTURES,  
CONTACT ON  
OUR WEBSITE**



"Vita Properties is a very professional agency. My experience with them was incredible and the entire team was very helpful and kind throughout the renting process. I'd highly recommend!"



| Energy Efficiency Rating  |           | Environmental Impact (CO <sub>2</sub> ) Rating                  |           |
|---|-----------|---|-----------|
| Current   | Potential | Current   | Potential |
| Very energy efficient - lower running costs                     |           |   |           |
| 92-100 <b>A</b>   |           | Very environmentally friendly - lower CO <sub>2</sub> emissions |           |
| 81-91 <b>B</b>  |           | 82-100 <b>A</b>   |           |
| 69-80 <b>C</b>  |           | 81-91 <b>B</b>  |           |
| 55-68 <b>D</b>  |           | 69-80 <b>C</b>  |           |
| 39-54 <b>E</b>  |           | 55-68 <b>D</b>  |           |
| 21-38 <b>F</b>  |           | 39-54 <b>E</b>  |           |
| 1-20 <b>G</b>   |           | 21-38 <b>F</b>  |           |
| Not energy efficient - higher running costs                     |           |   |           |
| Not environmentally friendly - higher CO <sub>2</sub> emissions |           |   |           |
| 80  |           | 75  |           |

England, Scotland & Wales EU Directive

SCAN FOR MORE  
GOOGLE REVIEWS



Google



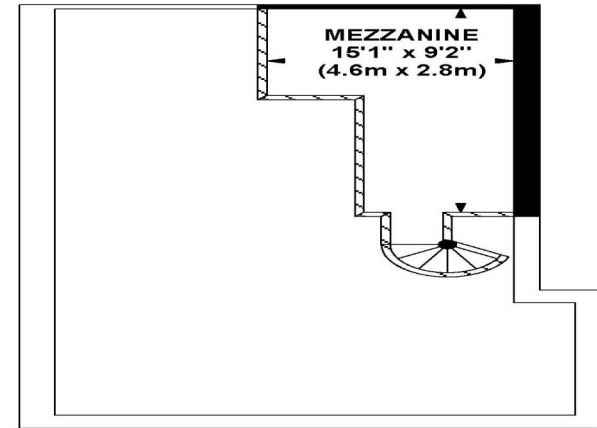
4.9 Stars | 132 Reviews

Find us on social media

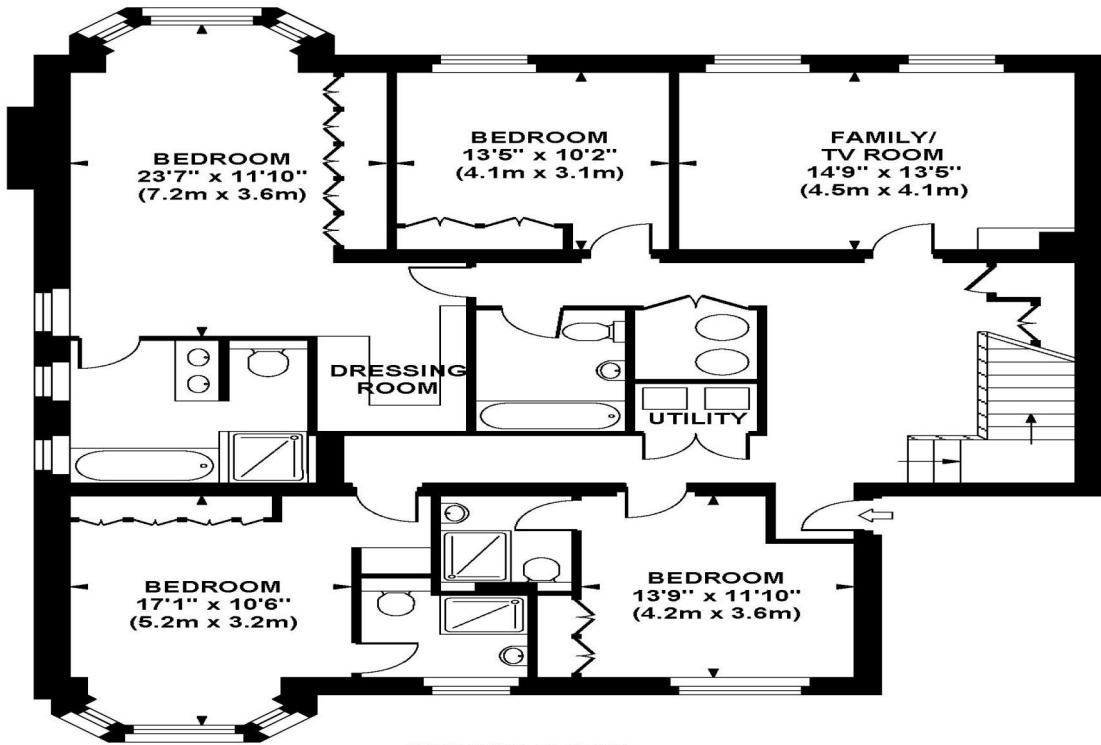
- vitaproperties
- VitaProperties
- VitaProperties

**ARKWRIGHT ROAD**

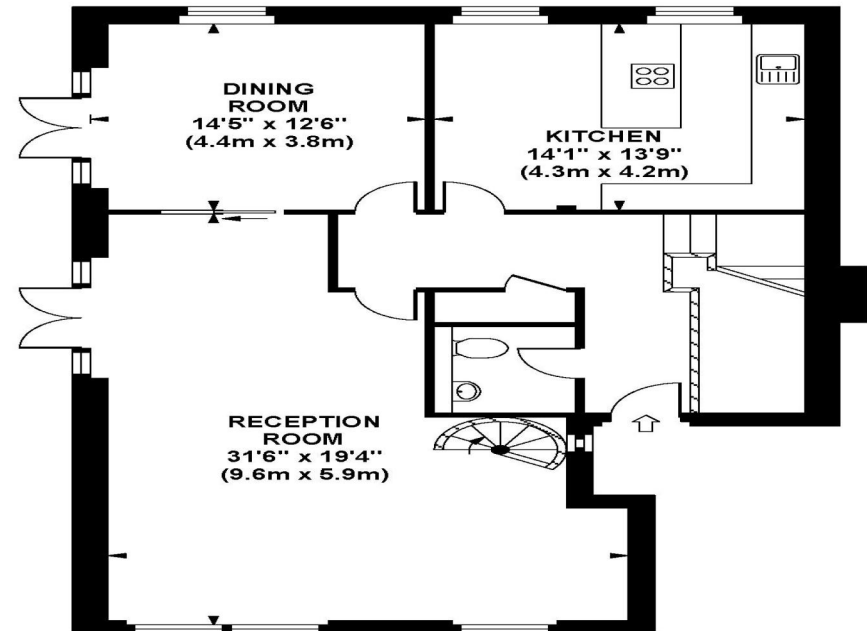
Approximate Gross Internal Area 2835 sq ft / 263.4 sq m



**MEZZANINE  
GROSS INTERNAL  
FLOOR AREA 120 SQ FT**



**SECOND FLOOR  
GROSS INTERNAL  
FLOOR AREA 1645 SQ FT**



**THIRD FLOOR  
GROSS INTERNAL  
FLOOR AREA 1070 SQ FT**

Although every attempt has been made to ensure accuracy, all measurements are approximate. The floor plan's for illustrative purposes only and not to scale. Measured in accordance to RICS standards.