



Lindfield Gardens, Hampstead, London, NW3 .| £825

- Reserved parking space
- Garage storage for bicycles and golf bags.
- Wood floors
- Communal gardens

- Offered unfurnished
- Available in May

"Vita Properties have been tremendously helpful throughout the process of securing/renting my flat. Informative about the property, prompt communication, easy to use dashboard for sharing of information, and pleasant to work with. Highly recommend!"

In conjunction with Karen Philips & Available in May is this spacious and well laid out 3 bedroom apartment located within walking distance to Hampstead High Street and further benefitting being close to the amenities of Finchley Road. The building is perfect for families with use of child friendly communal garden (with tree house, trampoline and BBQ area) This flat has its own entrance and walled patio area. The master bedroom has its own shower room en-suite and there is a family bathroom with bath and shower stall. The flat has wood floors throughout and the well fitted kitchen (with large gas oven/ hob) also benefits from a USA fridge/freezer.

There is garage space for bicycles, golf bags, etc - Offered unfurnished



Oliver Kent

✉ oliver.kent@vitaproperties.uk

☎ +4477 7274 0351



🏠	Flat
🔑	Under Negotiation
🛏️	x 3
🚿	x 1
🚶	x 2

"I was very impressed with Vita and their network of buyers. When the sale of my flat fell through (twice) they worked extremely hard to find new buyers in a difficult market - thank you!"



"Working with Vita properties has been a smooth experience! No complaints at all. Our letting agent, Diana has been fantastic and very helpful throughout the whole process. I would highly recommend both Vita properties and Diana."



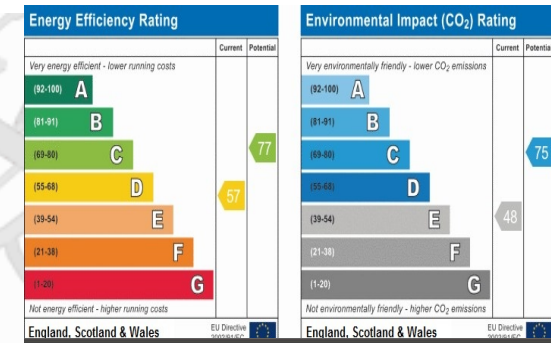
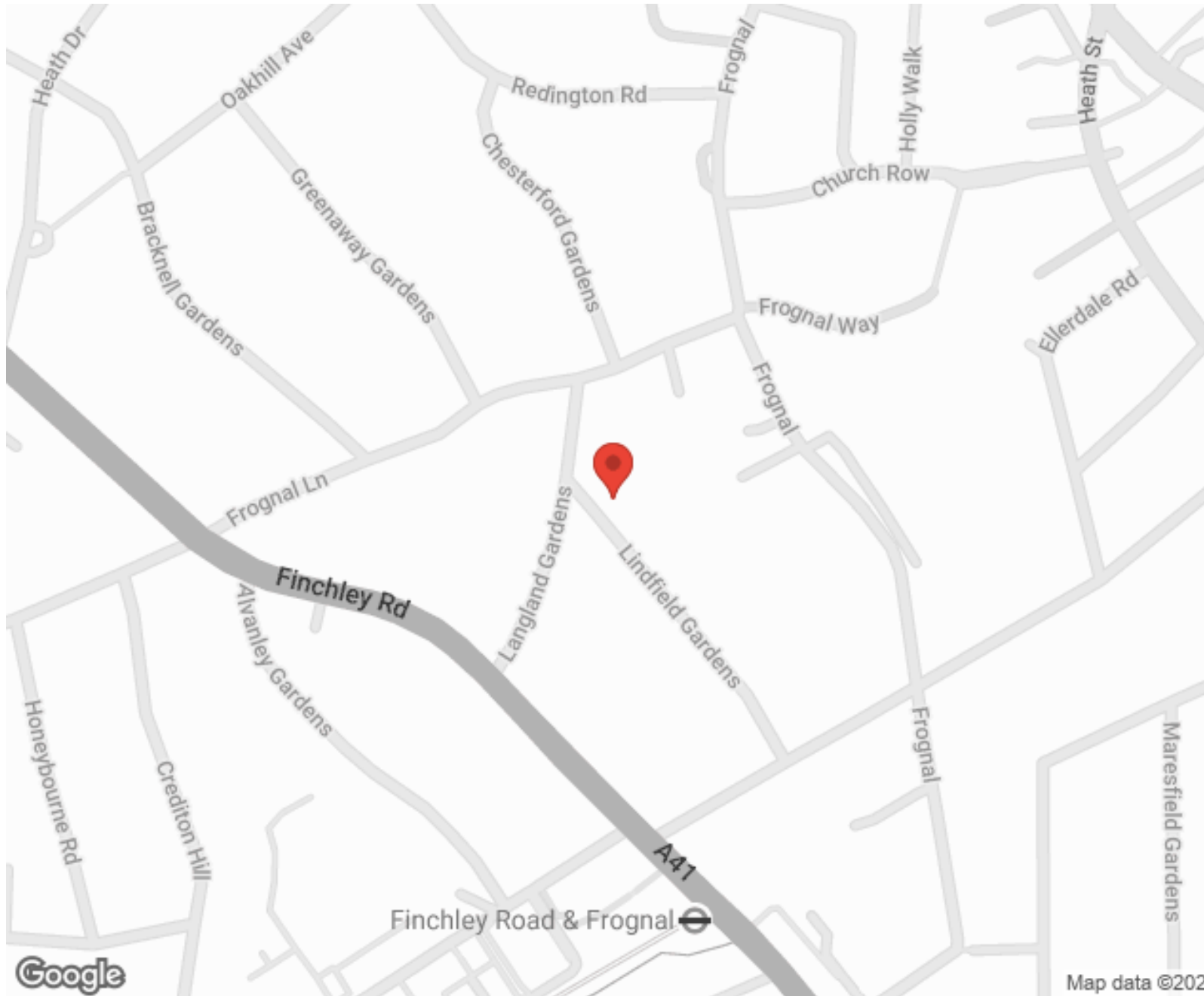
"I used Vita properties to find a flat recently and it was an overall professional, personalised and positive experience. Saira went the extra mile to accommodate to our needs and quick to help us whenever possible."



**MORE INFO, PICTURES,
CONTACT ON
OUR WEBSITE**



"Vita Properties is a very professional agency. My experience with them was incredible and the entire team was very helpful and kind throughout the renting process. I'd highly recommend!"



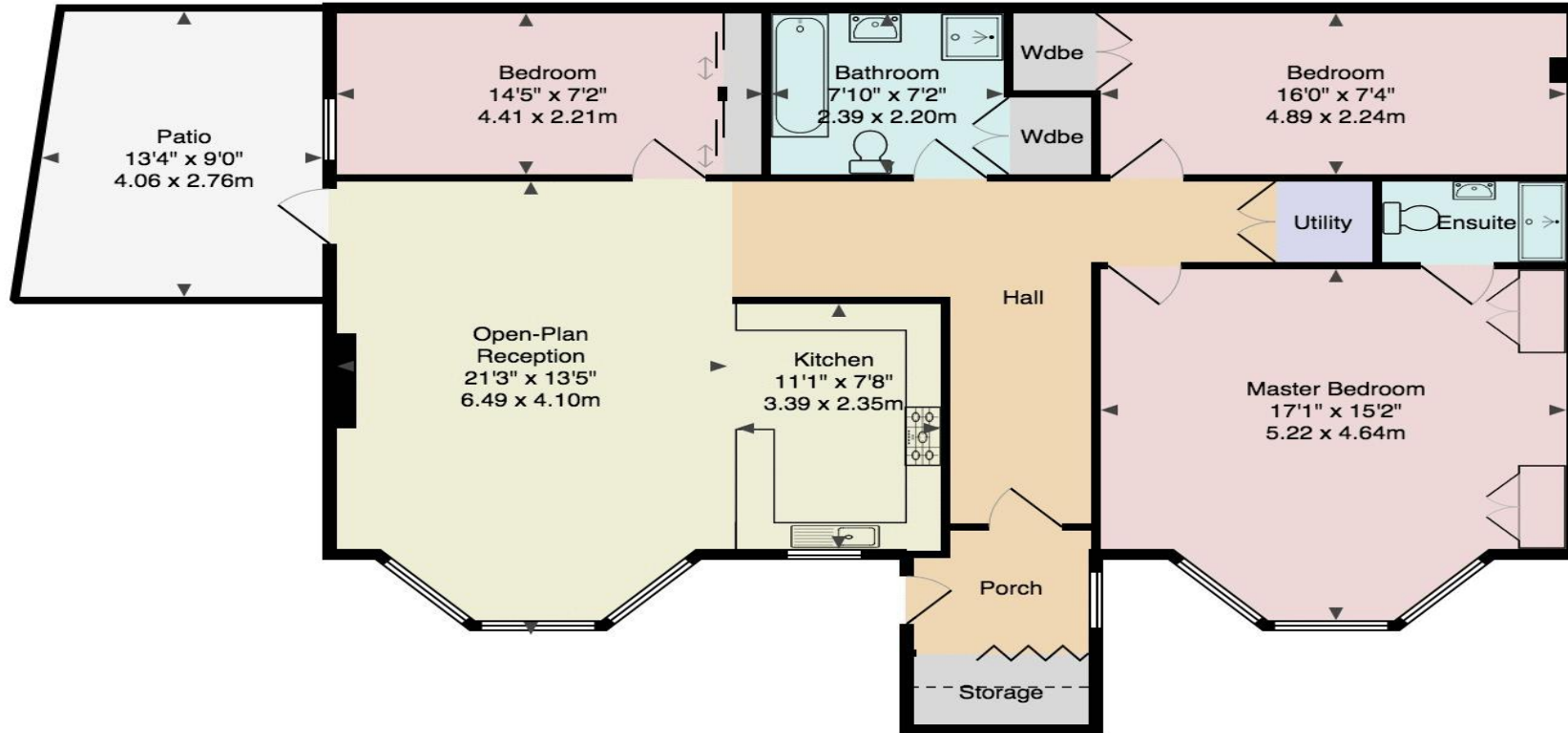
SCAN FOR MORE GOOGLE REVIEWS

Google
★★★★★
4.9 Stars | 132 Reviews

Find us on social media

- vitaproperties
- VitaProperties
- VitaProperties

Lindfield Gardens NW3



Ground Floor

Total Area: 1128 ft² ... 104.8 m²

Dimensions are approximate; for display purposes only. (c) Peninsula Surveys Ltd.