



Charles Lane, St Johns Wood, London, NW8 .| £1,050,000

- Top floor
- Spacious and bright
- Caretaker
- Low service charge

- Two large bedrooms - Two bathrooms
- Chain free

"Vita Properties have been tremendously helpful throughout the process of securing/renting my flat. Informative about the property, prompt communication, easy to use dashboard for sharing of information, and pleasant to work with. Highly recommend!"

Offered chain free and located in the heart of St Johns Wood is this beautifully presented two bedroom apartment, positioned on the top floor of Eagle House on the corner of St John's Wood Terrace and the lovely cobbled streets of Charles Lane. Approximately 1012 sq ft this bright and spacious apartment benefits a recently renovated, fully fitted kitchen, large double bedrooms, two bathrooms, separate utilities and ample storage.

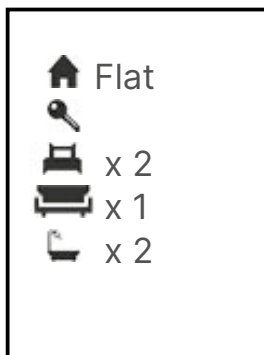
This property makes a cosy home in a central location



Oliver Kent

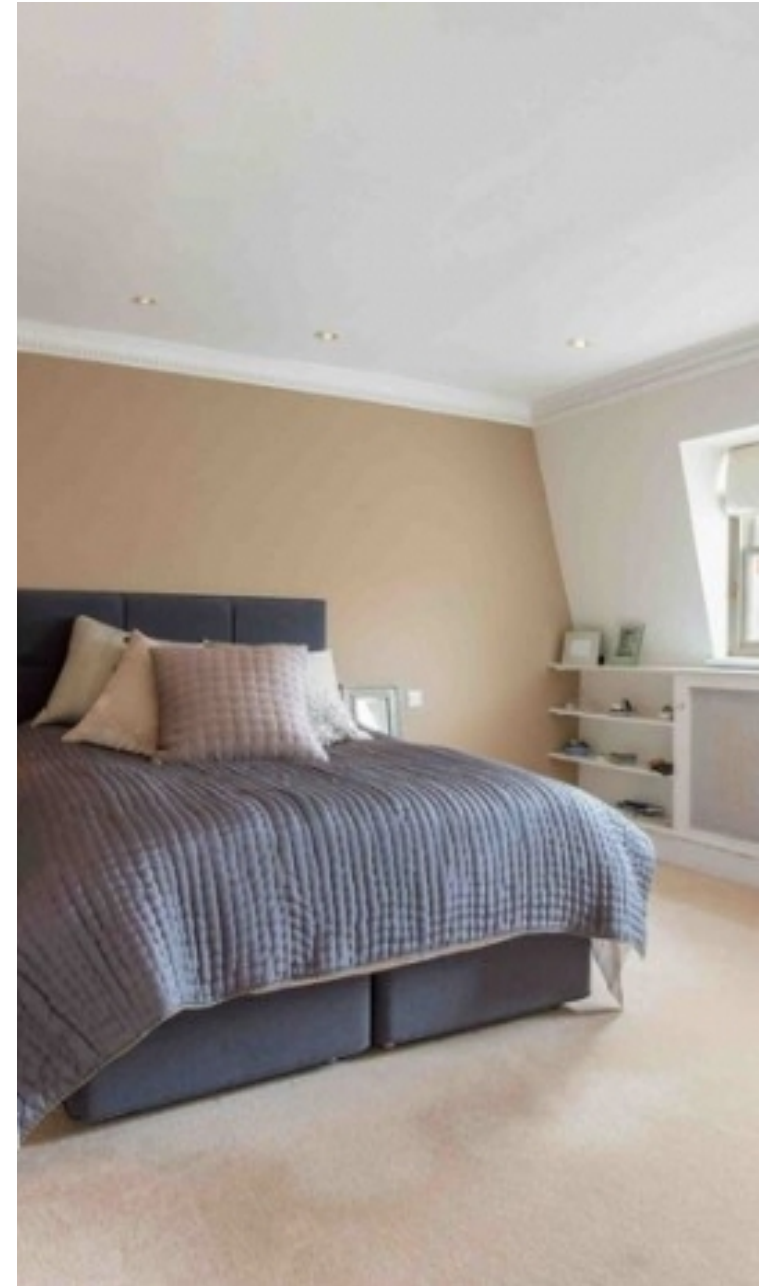
✉ [oliver.kent@vitaproperties.uk](mailto:oliver.kent@vitaproperties.uk)

☎ +4477 7274 0351



"I was very impressed with Vita and their network of buyers. When the sale of my flat fell through (twice) they worked extremely hard to find new buyers in a difficult market - thank you!"

---



"Working with Vita properties has been a smooth experience! No complaints at all. Our letting agent, Diana has been fantastic and very helpful throughout the whole process. I would highly recommend both Vita properties and Diana."

---





"I used Vita properties to find a flat recently and it was an overall professional, personalised and positive experience. Saira went the extra mile to accommodate to our needs and quick to help us whenever possible."

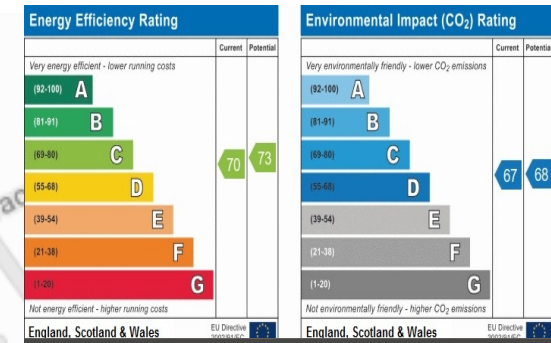
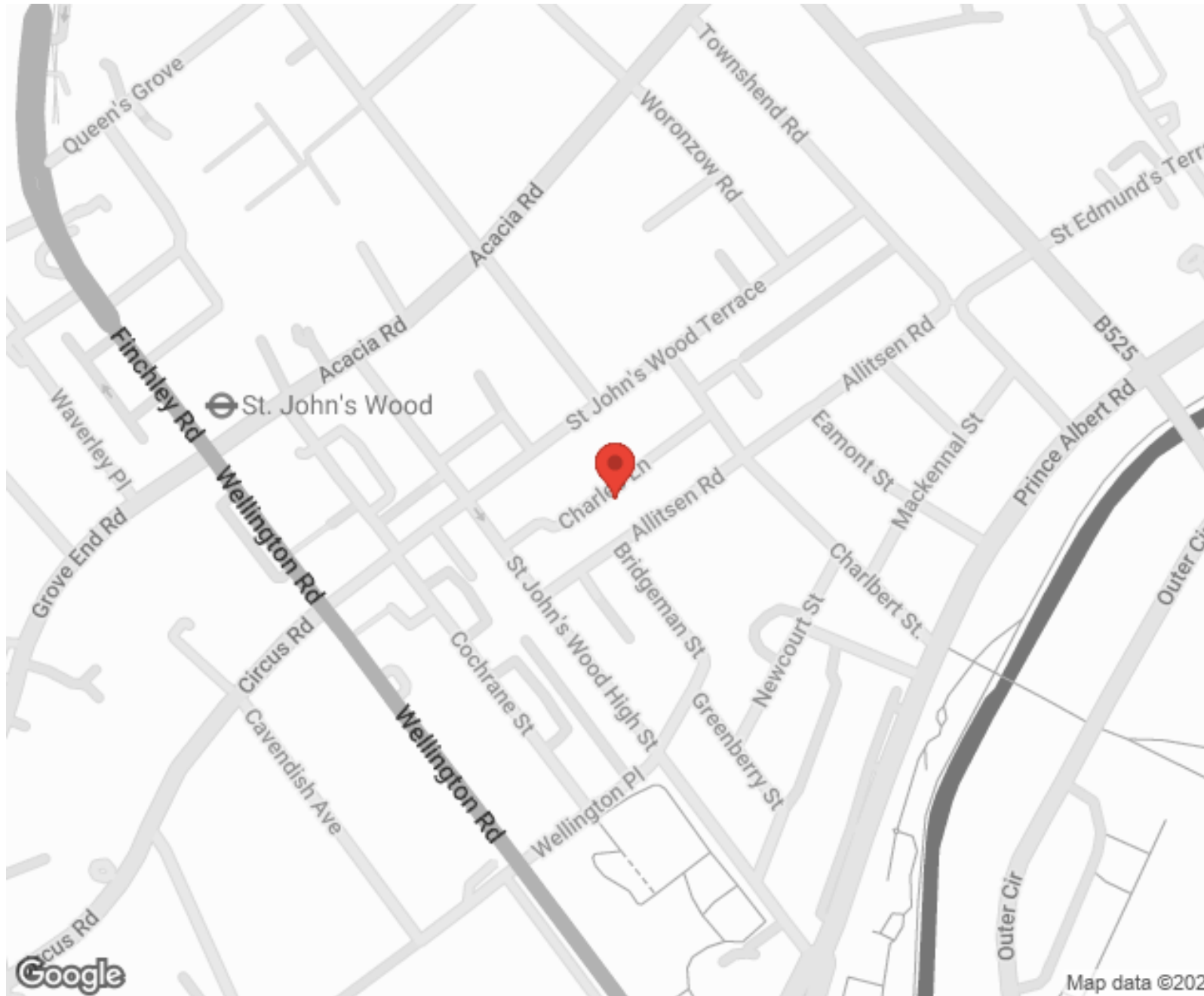
---



**MORE INFO, PICTURES,  
CONTACT ON  
OUR WEBSITE**



"Vita Properties is a very professional agency. My experience with them was incredible and the entire team was very helpful and kind throughout the renting process. I'd highly recommend!"



SCAN FOR MORE GOOGLE REVIEWS

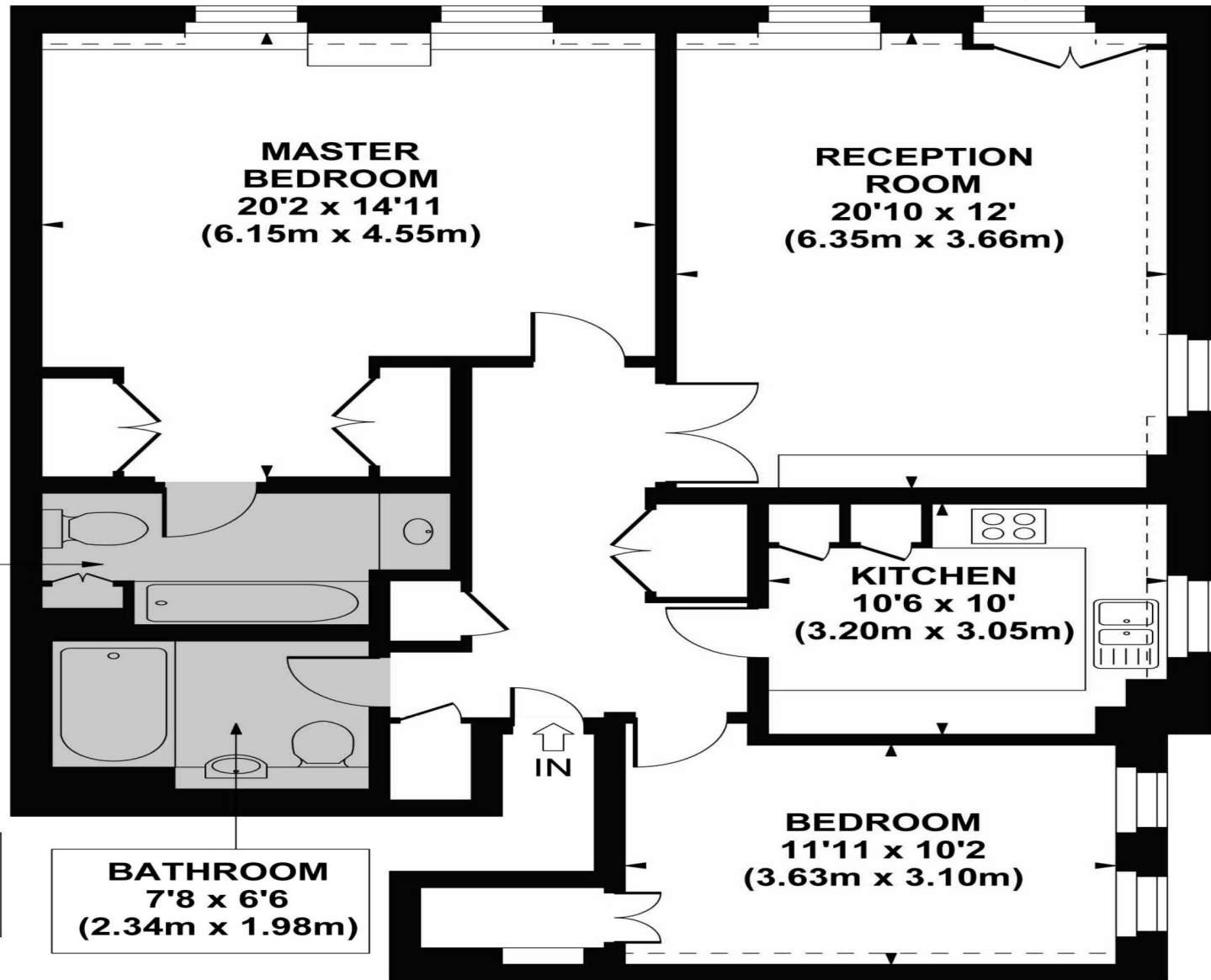
Google  
★★★★★  
4.9 Stars | 132 Reviews

Find us on social media

- vitaproperties
- VitaProperties
- VitaProperties

# EAGLE HOUSE, NW8 6JJ

Approx. Gross Internal Floor Area 1012 sq ft. / 94.01 sq.m



**BATHROOM**  
10'1 x 6'3  
(3.07m x 1.90m)

**BATHROOM**  
7'8 x 6'6  
(2.34m x 1.98m)

## THIRD FLOOR

For Illustration Purposes Only - Not To Scale Floor Plan by [www.nogaphotostudio.com](http://www.nogaphotostudio.com) Ref: No.28473  
This floor plan should be used as a general outline for guidance only. Any intending purchaser or lessee should satisfy themselves by inspection, searches, enquiries and full survey as to the correctness of each statement. Any areas, measurement or distances quoted are approximate and should not be used to value a property or be the basis of any sale or let.