



Randolph Avenue, Maida Vale, London, W9 .| £465

- Lift
- High ceilings
- Modern
- Bright

- Moments to Maida Vale & Little Venice
- Offered furnished
- Available from 12th Aug 2017

"Vita Properties have been tremendously helpful throughout the process of securing/renting my flat. Informative about the property, prompt communication, easy to use dashboard for sharing of information, and pleasant to work with. Highly recommend!"

Available 12th Aug is this funky one bedroom luxury apartment interior designed to the highest of specifications with wood floors and a separate WC as well as a bathroom. This second floor apartment has a cool contemporary feel throughout is accessed via a lift and is within easy walking distance of the Underground ( Maida Vale 6 minutes Google Maps) the charming shops at Clifton Road and the Canal at Little Venice. Offered furnished.



Oliver Kent

✉ [oliver.kent@vitaproperties.uk](mailto:oliver.kent@vitaproperties.uk)

☎ +4477 7274 0351

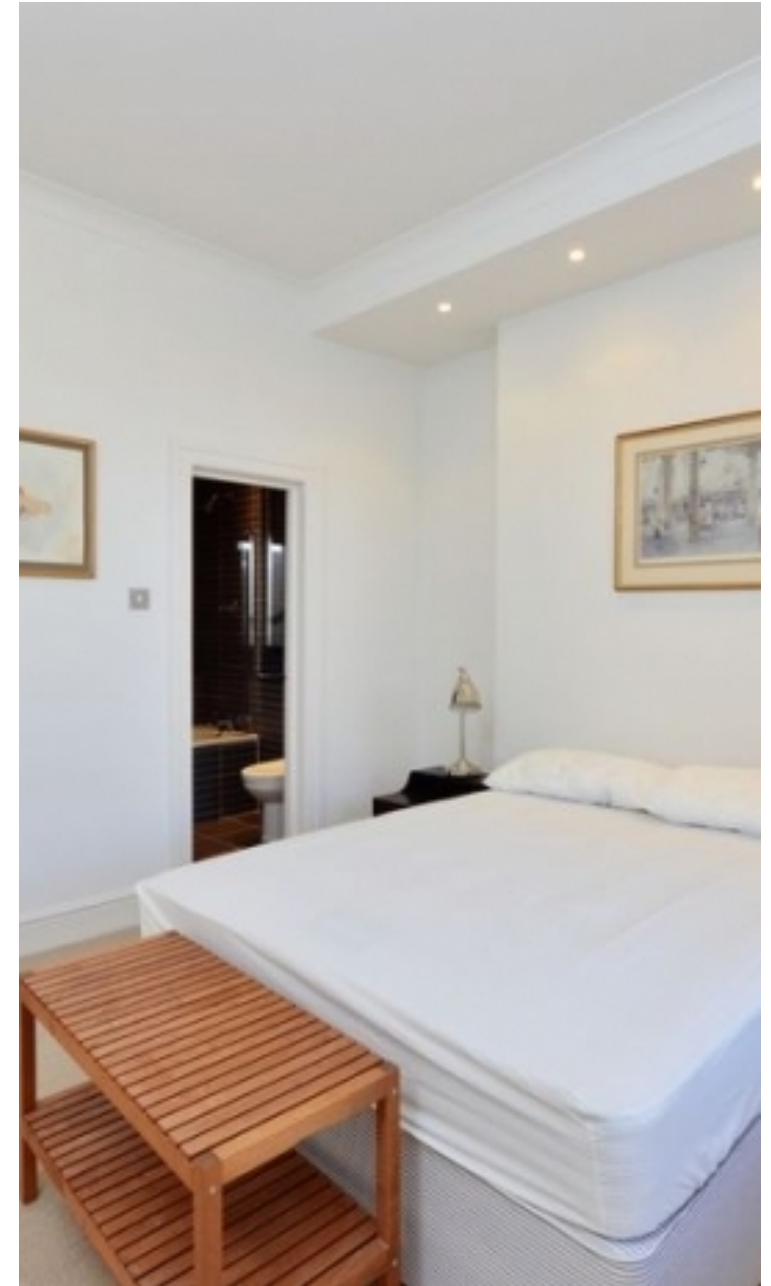


🏠	Flat
🔑	Available to Let
🛏️	x 1
🚿	x 1
🚽	x 1



"I was very impressed with Vita and their network of buyers. When the sale of my flat fell through (twice) they worked extremely hard to find new buyers in a difficult market - thank you!"

---



"Working with Vita properties has been a smooth experience! No complaints at all. Our letting agent, Diana has been fantastic and very helpful throughout the whole process. I would highly recommend both Vita properties and Diana."

---



"I used Vita properties to find a flat recently and it was an overall professional, personalised and positive experience. Saira went the extra mile to accommodate to our needs and quick to help us whenever possible."

---

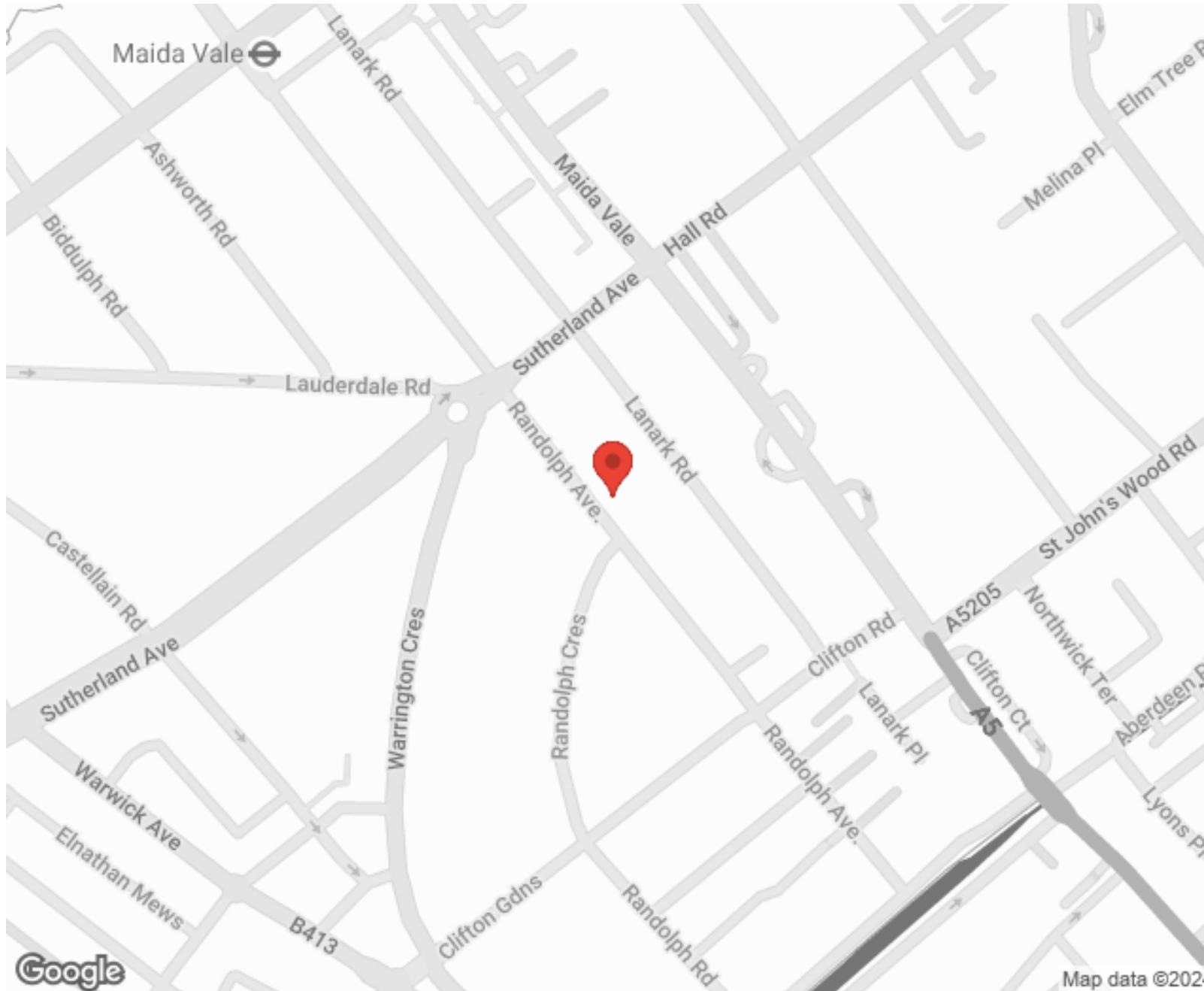


**MORE INFO, PICTURES,  
CONTACT ON  
OUR WEBSITE**



"Vita Properties is a very professional agency. My experience with them was incredible and the entire team was very helpful and kind throughout the renting process. I'd highly recommend!"

---



SCAN FOR MORE  
GOOGLE REVIEWS






Google

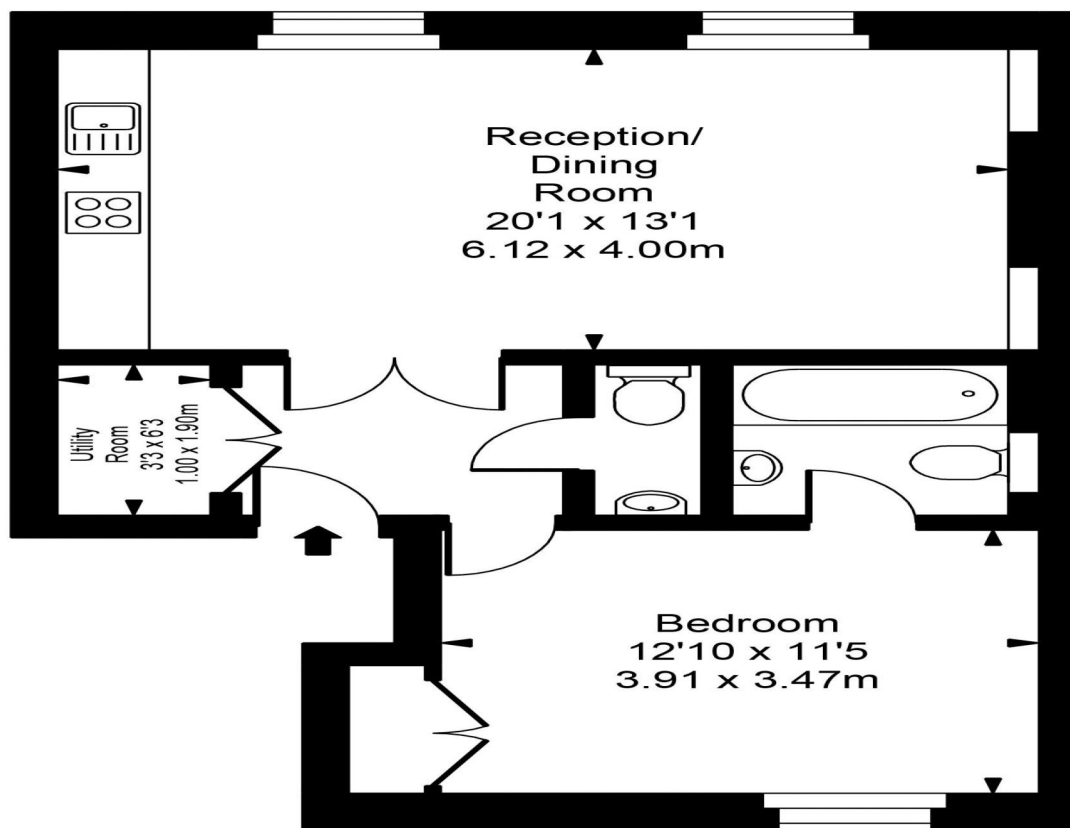
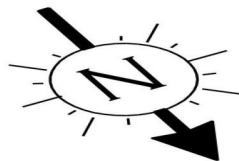


4.9 Stars | 132 Reviews

Find us on social media

-  vitaproperties
-  VitaProperties
-  VitaProperties

# Randolph Avenue



Second Floor



Approx Gross Internal Area **593 Sq Ft - 55.09 Sq M**

FOR ILLUSTRATIVE PURPOSES ONLY. NOT TO SCALE.

Whilst every attempt has been made to ensure the accuracy of the floorplan shown, all measurements, positioning, fixtures, fittings and any other data shown are an approximate interpretation for illustrative purposes only and are not to scale. No responsibility is taken for any error, omission, miss-statement or use of data shown.

Floor plan by [www.bestangle.co.uk](http://www.bestangle.co.uk)