



Arkwright Road, Hampstead, London, NW3 .| £1,900

- 2 bedrooms, 2 bathrooms & WC
- Ground floor with access to the communal gardens
- 1,487 sq. ft
- Furnished
- Great transport links
- Available from early October

"Vita Properties have been tremendously helpful throughout the process of securing/renting my flat. Informative about the property, prompt communication, easy to use dashboard for sharing of information, and pleasant to work with. Highly recommend!"

A stunning, exceptionally spacious 2 3 miles bedroom apartment of about 1,415 sq ft/131.5 sq m, within this exciting new development created from an imposing period house in Hampstead. The luxuriously appointed accommodation is set on the raised ground floor and features beautiful high ceilings, luxury finishes and smart interior design with Comfort Cooling, integrated WiFi and Sonos system. The flat has use of a communal garden and gated off street parking. Arkwright Road is located close to Hampstead Village and transport amenities including Hampstead tube (0.3 miles), Finchley Road tube (0.5 miles) and Finchley Road & Frognal Overground station (0.



Oliver Kent

✉ oliver.kent@vitaproperties.uk
☎ +4477 7274 0351



🏠	Flat
🔑	Available to Let
🛏️	x 2
🛋️	x 1
📞	x 2

"I was very impressed with Vita and their network of buyers. When the sale of my flat fell through (twice) they worked extremely hard to find new buyers in a difficult market - thank you!"



"Working with Vita properties has been a smooth experience! No complaints at all. Our letting agent, Diana has been fantastic and very helpful throughout the whole process. I would highly recommend both Vita properties and Diana."



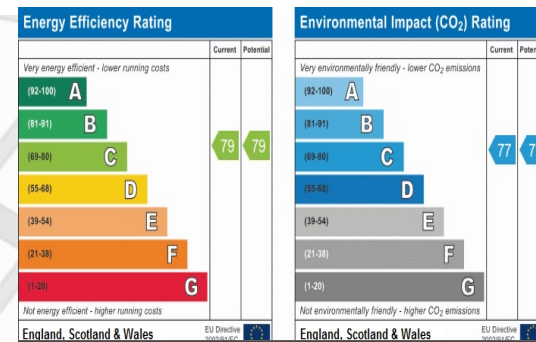
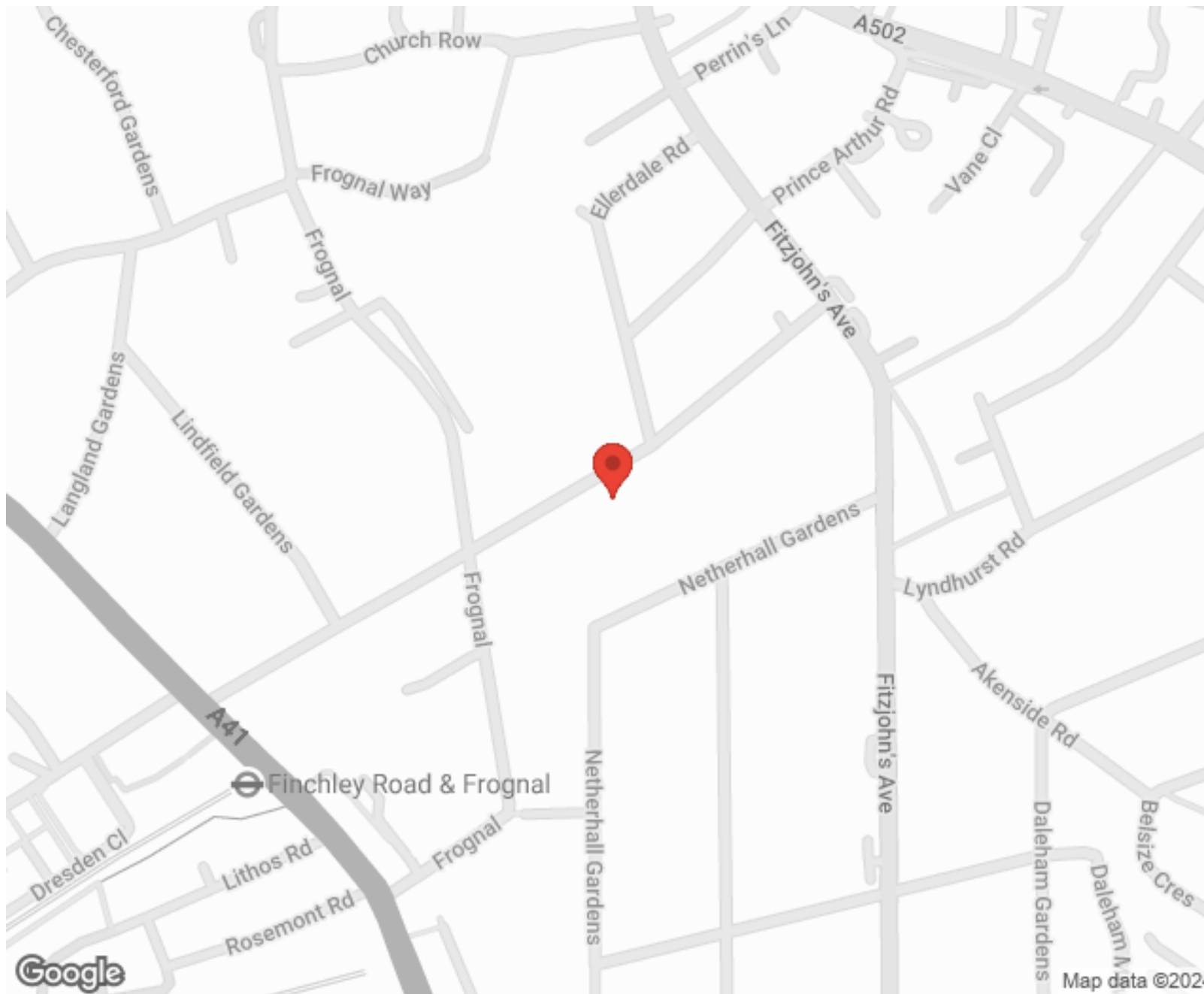
"I used Vita properties to find a flat recently and it was an overall professional, personalised and positive experience. Saira went the extra mile to accommodate to our needs and quick to help us whenever possible."



**MORE INFO, PICTURES,
CONTACT ON
OUR WEBSITE**



"Vita Properties is a very professional agency. My experience with them was incredible and the entire team was very helpful and kind throughout the renting process. I'd highly recommend!"



SCAN FOR MORE GOOGLE REVIEWS

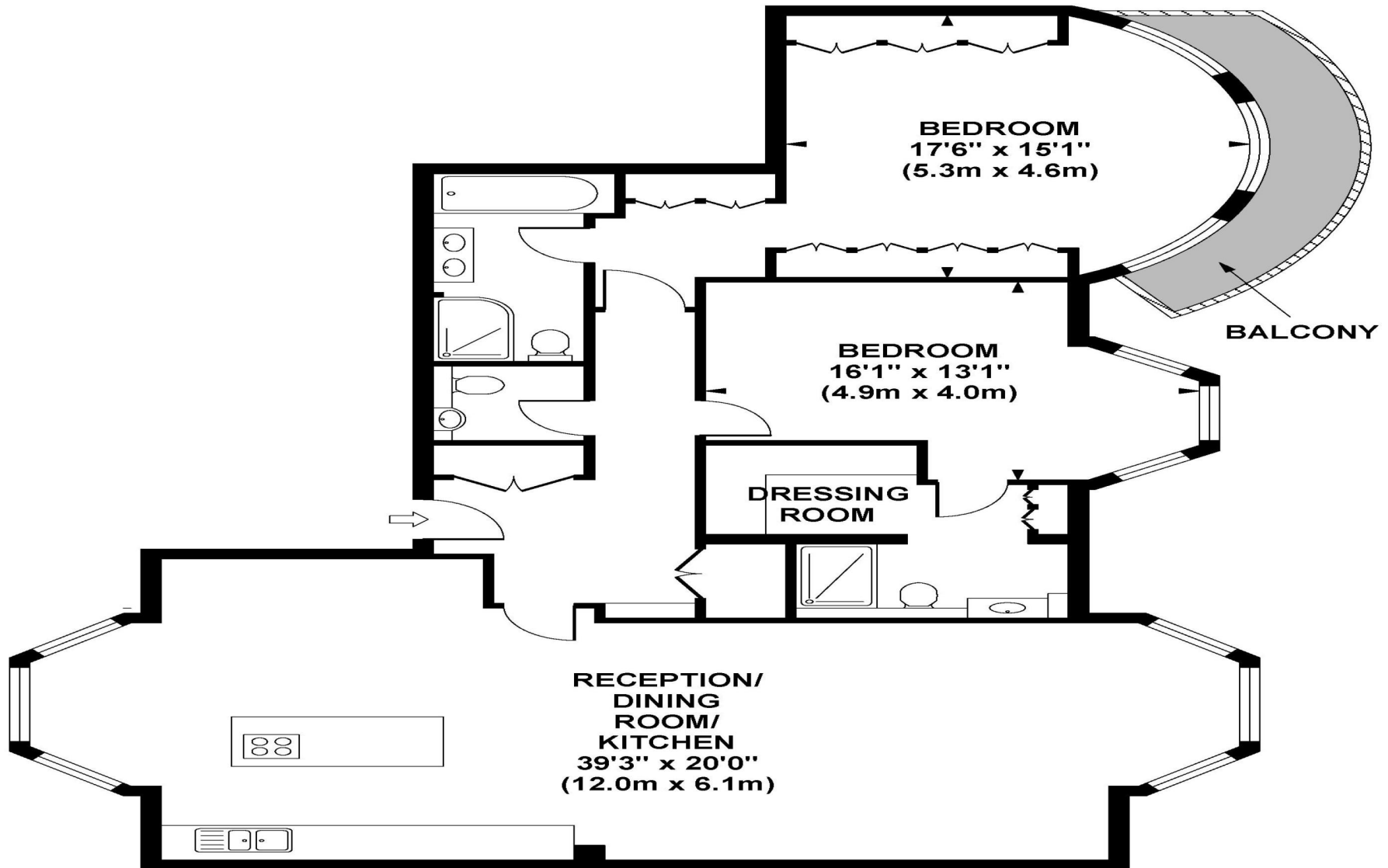
Google
★★★★★
4.9 Stars | 132 Reviews

Find us on social media

- vitaproperties
- VitaProperties
- VitaProperties

ARKWRIGHT ROAD

Approximate Gross Internal Area 1415 sq ft / 131.5 sq m



**GROUND FLOOR
GROSS INTERNAL
FLOOR AREA 1415 SQ FT**

Although every attempt has been made to ensure accuracy, all measurements are approximate. The floor plan's for illustrative purposes only and not to scale. Measured in accordance to RICS standards.