

Collection Place, 96 Boundary Road, St Johns Wood, London, NW8 0RH | £1,450

- Underground allocated parking
- Concierge
- Stunning private south facing roof terrace
- Modern fittings
- Private tranquil courtyard
- Managed
- Available immediately

"Vita Properties have been tremendously helpful throughout the process of securing/renting my flat. Informative about the property, prompt communication, easy to use dashboard for sharing of information, and pleasant to work with. Highly recommend!"

Available immediately - A luxury 3 bedroom contemporary style house arranged over four floors and furnished to a very high standard.

Located in a luxury development in the original Saatchi Gallery, the property benefits from a large private roof terrace and underground garage and comprises master bedroom with en suite bathroom, 2 further bedrooms, 2 further bathrooms (1 en suite), reception room, a luxury eat-in kitchen opening to a private patio garden and a utility room.

Boundary Road is located in the heart of St John's Wood close to both St John's Wood High Street and underground station (Jubilee line).








Oliver Kent

✉ oliver.kent@vitaproperties.uk

☎ +4477 7274 0351



-  House
-  Available to Let
-  x 3
-  x 2
-  x 3

"I was very impressed with Vita and their network of buyers. When the sale of my flat fell through (twice) they worked extremely hard to find new buyers in a difficult market - thank you!"



"Working with Vita properties has been a smooth experience! No complaints at all. Our letting agent, Diana has been fantastic and very helpful throughout the whole process. I would highly recommend both Vita properties and Diana."



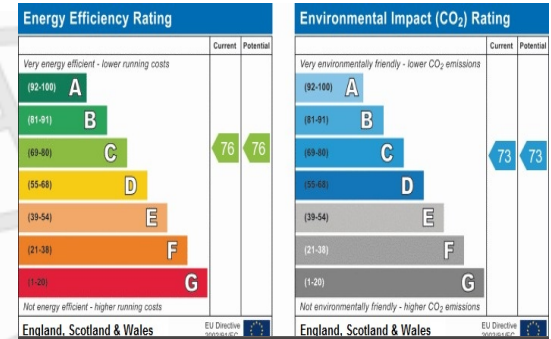
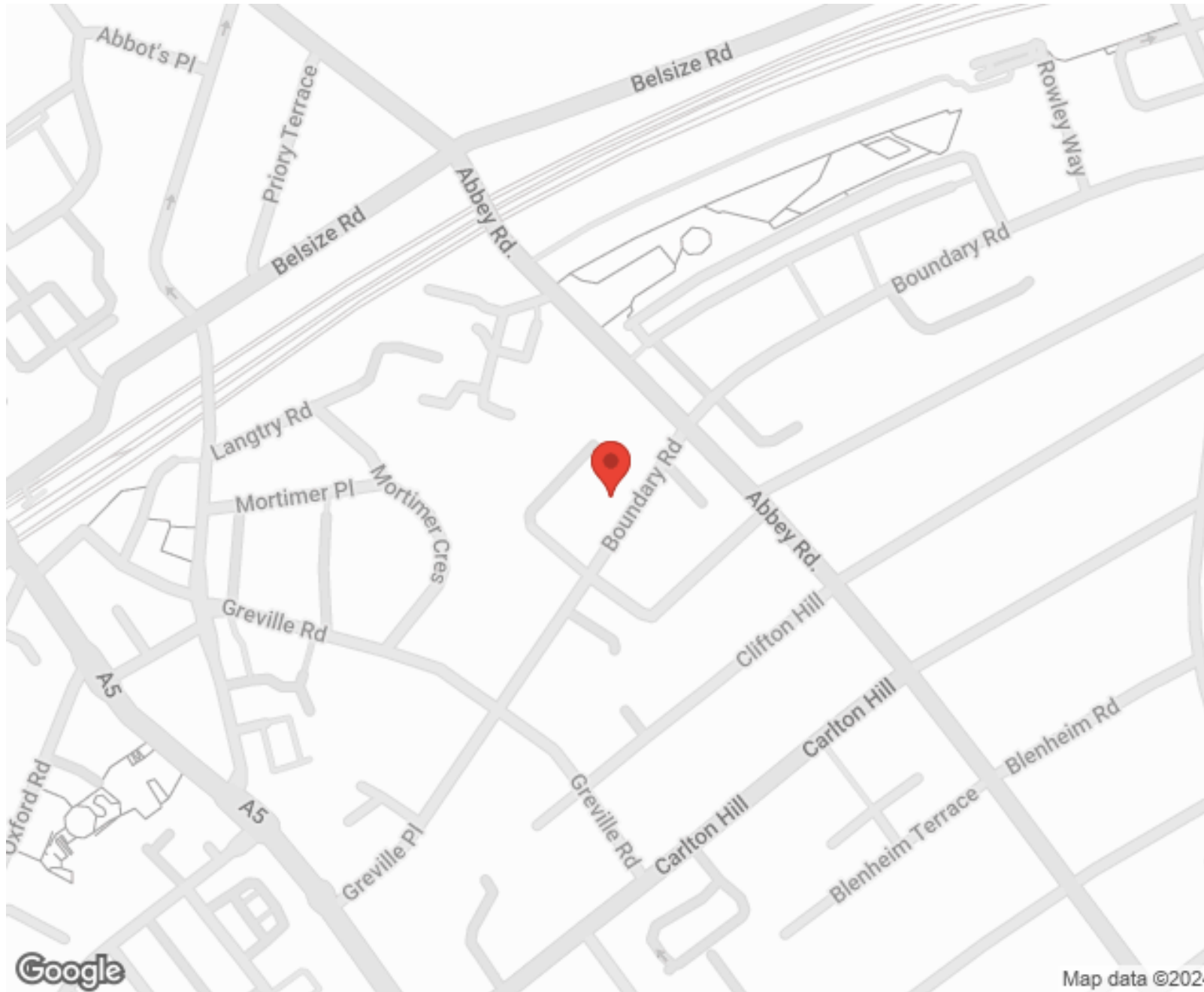
"I used Vita properties to find a flat recently and it was an overall professional, personalised and positive experience. Saira went the extra mile to accommodate to our needs and quick to help us whenever possible."



**MORE INFO, PICTURES,
CONTACT ON
OUR WEBSITE**



"Vita Properties is a very professional agency. My experience with them was incredible and the entire team was very helpful and kind throughout the renting process. I'd highly recommend!"



SCAN FOR MORE
GOOGLE REVIEWS



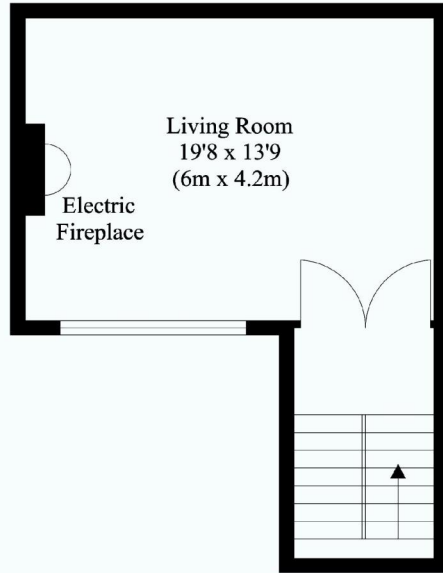
Google



4.9 Stars | 132 Reviews

Find us on social media

-  vitaproperties
-  VitaProperties
-  VitaProperties



First Floor

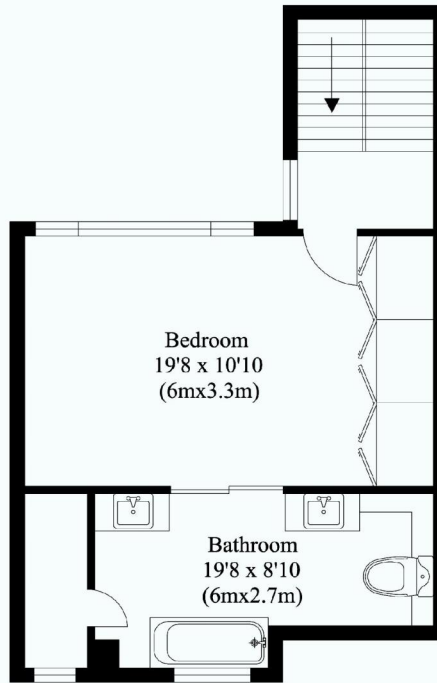
TOTAL APPROX. FLOOR AREA
271.25 SQ.FP . (25.2 SQ.M)

Living Room
19'8 x 13'9
(6m x 4.2m)

Electric
Fireplace

Second Floor

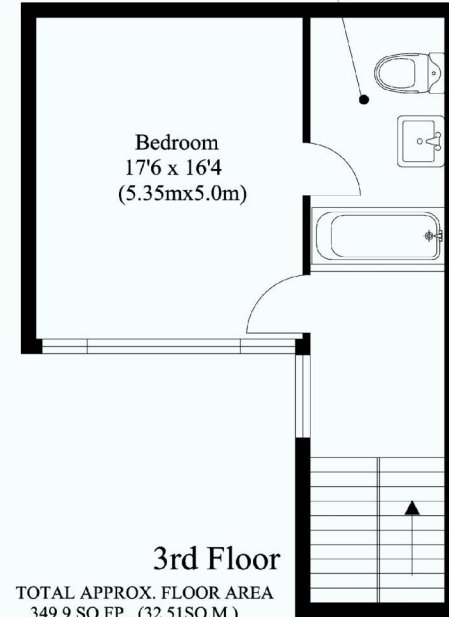
TOTAL APPROX. FLOOR AREA
387.5 SQ.FP . (36 SQ.M)



Bedroom
19'8 x 10'10
(6mx3.3m)

Bathroom
19'8 x 8'10
(6mx2.7m)

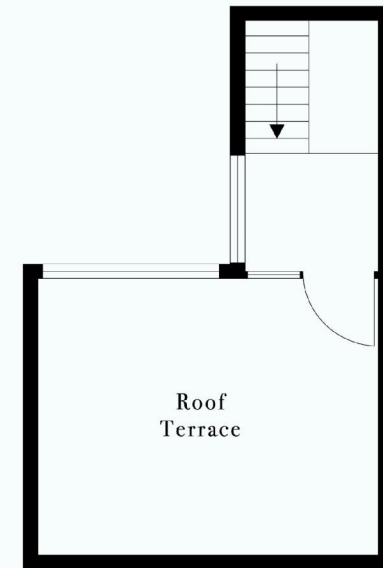
Bathroom
9'5 x 6'6
(2.88m x 2m)



Bedroom
17'6 x 16'4
(5.35mx5.0m)

3rd Floor

TOTAL APPROX. FLOOR AREA
349.9 SQ.FP . (32.51SQ.M)



Roof
Terrace

4th Floor