



Penfold Street, St Johns Wood, London, NW8 .| £500

- Three double bedrooms - Two bathrooms
- Warehouse Style Apartment
- Wooden Floors
- Lovely duplex converted warehouse style apartment (1930s Art Deco factory/warehouse building)

- Exposed concrete walls
- Available 26 November 2016

"Vita Properties have been tremendously helpful throughout the process of securing/renting my flat. Informative about the property, prompt communication, easy to use dashboard for sharing of information, and pleasant to work with. Highly recommend!"

Available immediately - A unique opportunity to rent a lovely duplex converted warehouse style apartment (1930s Art Deco factory/warehouse building).

Comprising three double bedrooms and two bathrooms (one en-suite) the apartment is situated on the first floor (with a lift) and benefits from a spacious living area, fitted kitchen and wooden flooring.

The Wallis Building is situated on the corner of Penfold street and Frampton Street and is close to the boutiques and restaurants of Marylebone High Street and the underground station. Edgware Road is also only short walk away.



Oliver Kent

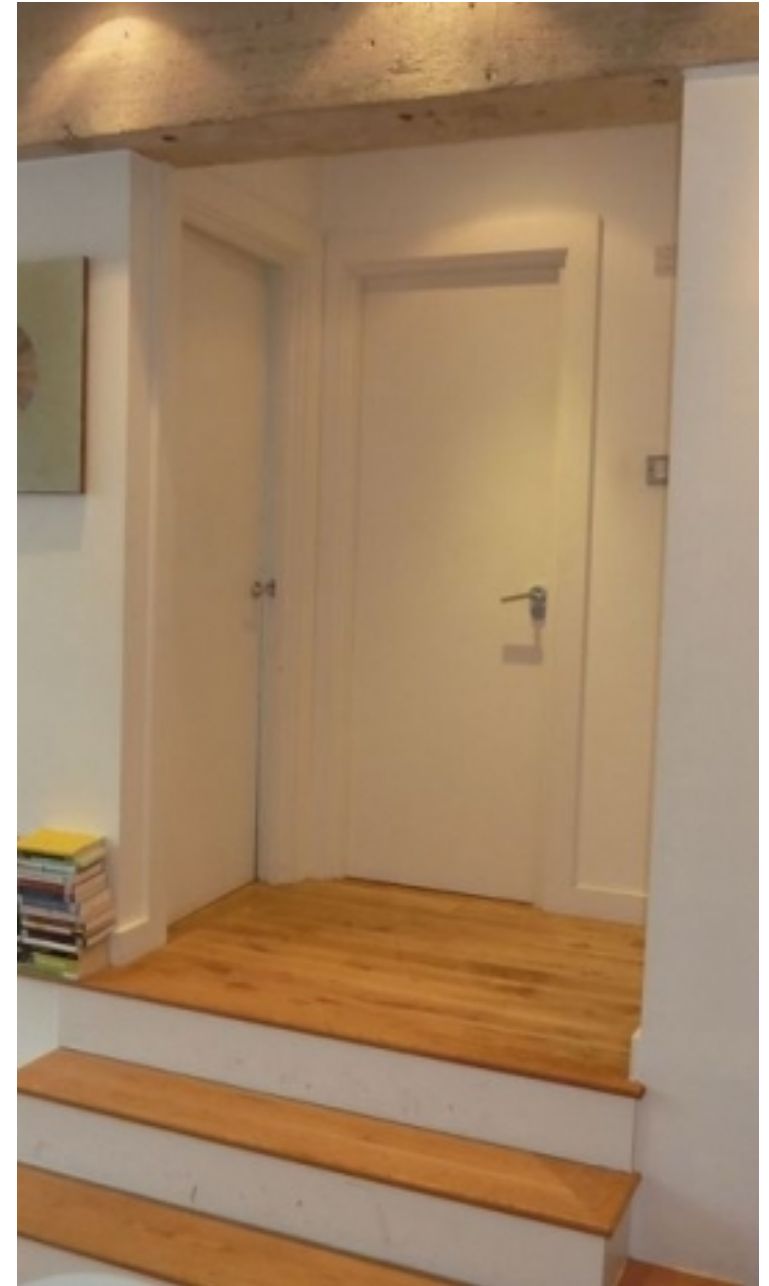
✉ [oliver.kent@vitaproperties.uk](mailto:oliver.kent@vitaproperties.uk)  
☎ +4477 7274 0351



🏠	Flat
🔑	Under Negotiation
🛏️	x 3
🚿	x 1
🚶	x 2

"I was very impressed with Vita and their network of buyers. When the sale of my flat fell through (twice) they worked extremely hard to find new buyers in a difficult market - thank you!"

---



"Working with Vita properties has been a smooth experience! No complaints at all. Our letting agent, Diana has been fantastic and very helpful throughout the whole process. I would highly recommend both Vita properties and Diana."

---



"I used Vita properties to find a flat recently and it was an overall professional, personalised and positive experience. Saira went the extra mile to accommodate to our needs and quick to help us whenever possible."

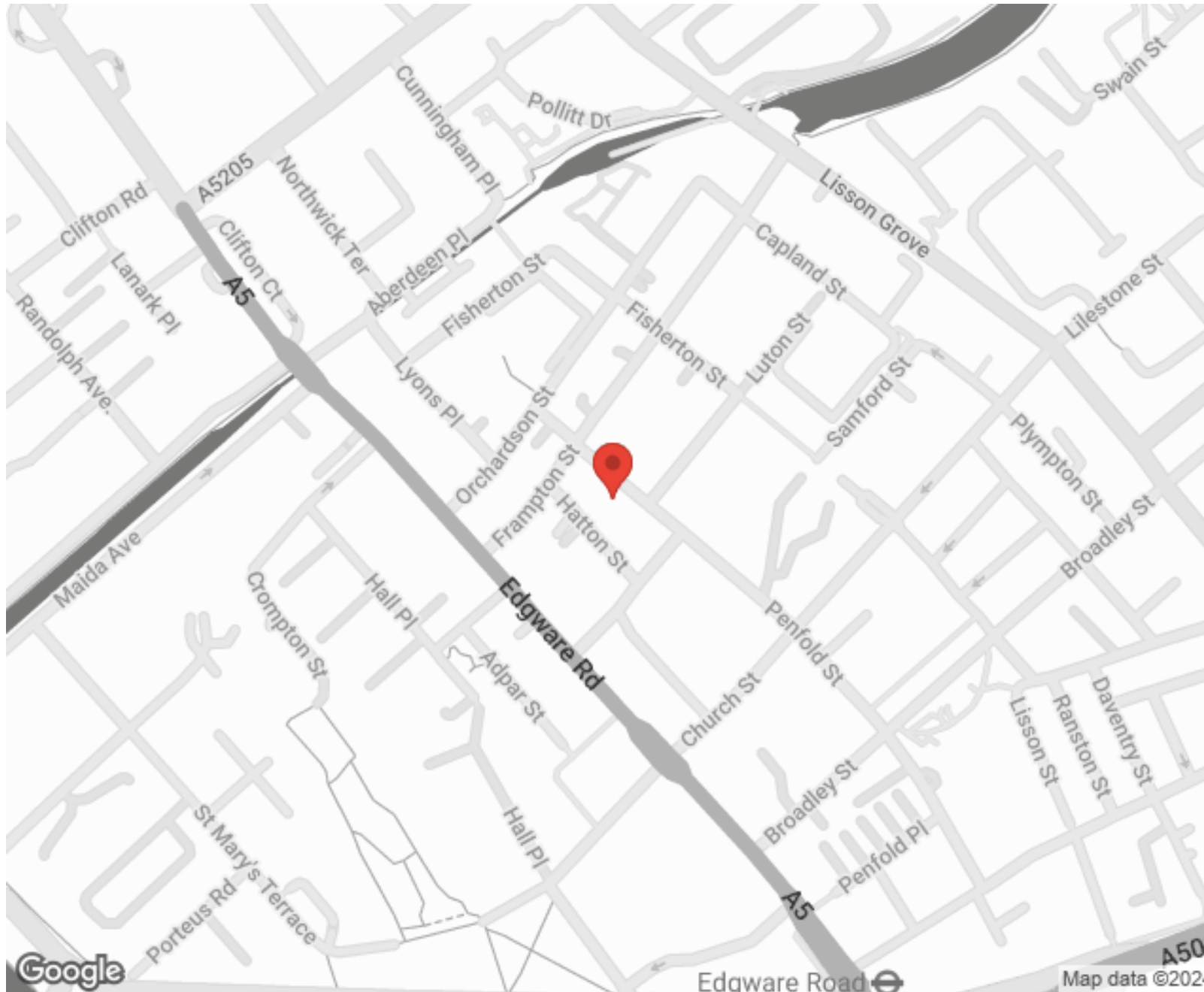
---



**MORE INFO, PICTURES,  
CONTACT ON  
OUR WEBSITE**



"Vita Properties is a very professional agency. My experience with them was incredible and the entire team was very helpful and kind throughout the renting process. I'd highly recommend!"



SCAN FOR MORE  
GOOGLE REVIEWS






Google



4.9 Stars | 132 Reviews

Find us on social media

-  vitaproperties
-  VitaProperties
-  VitaProperties

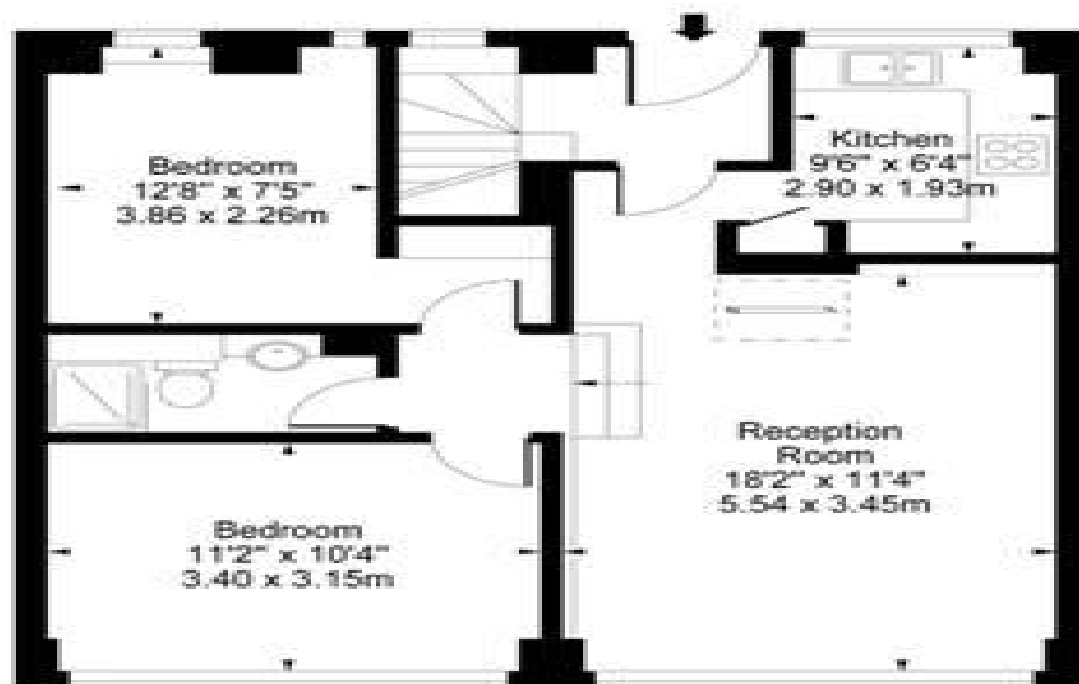
**The Wallis Building,  
Penfold Street,  
St. Johns Wood, NW8 8PQ**



Ground Floor



Mezzanine



First Floor



Raised Ground Floor

**Approx Gross Internal Area 1005 Sq Ft - 93.36 Sq M**  
(Including Mezzanine Store)  
(Excluding Store)

For Illustration Purposes Only - Not To Scale  
Floor Plan from [www.BigPropertyMarketing.com](http://www.BigPropertyMarketing.com)