



Chevening Road, Queens Park, London, NW6 .| £575

- Walking into this home puts a smile on your face
- Beautifully and tastefully refurbished
- Seconds to Salisbury Road and Queens Park itself
- Offering over 1200 sq ft
- Own entrance
- Freshly laid front and back garden
- Available immediately

"Vita Properties have been tremendously helpful throughout the process of securing/renting my flat. Informative about the property, prompt communication, easy to use dashboard for sharing of information, and pleasant to work with. Highly recommend!"

We are delighted to offer this beautifully refurbished 1200 sq ft two bathroom garden apartment occupying the entire ground floor of this converted period house.

Located within moments from the bustling Salusbury Road with its wide selection of deli's, restaurants, recreational facilities and transport links, it is also moments from the green open spaces of Queens Park itself.

The flat is thought out with care to the finest detail benefiting from a magnificent outhouse which could be used a spare room, study or gym, a spacious reception room with bi-folding doors leading onto a freshly laid garden with a sociable patio area, two double bedrooms both with en-suites and fitted storage, a guest WC and a utility room.



Oliver Kent

✉ oliver.kent@vitaproperties.uk
☎ +4477 7274 0351



🏠	Flat
🔑	Under Negotiation
🛏	x 2
🚿	x 1
🚽	x 2

"I was very impressed with Vita and their network of buyers. When the sale of my flat fell through (twice) they worked extremely hard to find new buyers in a difficult market - thank you!"



"Working with Vita properties has been a smooth experience! No complaints at all. Our letting agent, Diana has been fantastic and very helpful throughout the whole process. I would highly recommend both Vita properties and Diana."



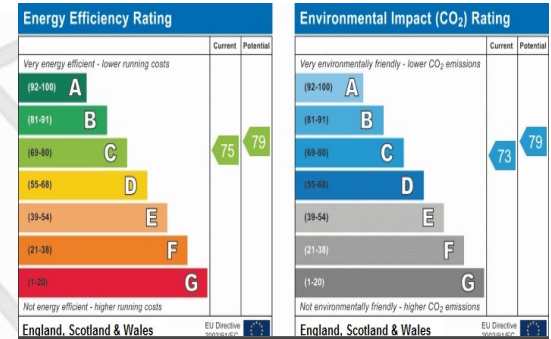
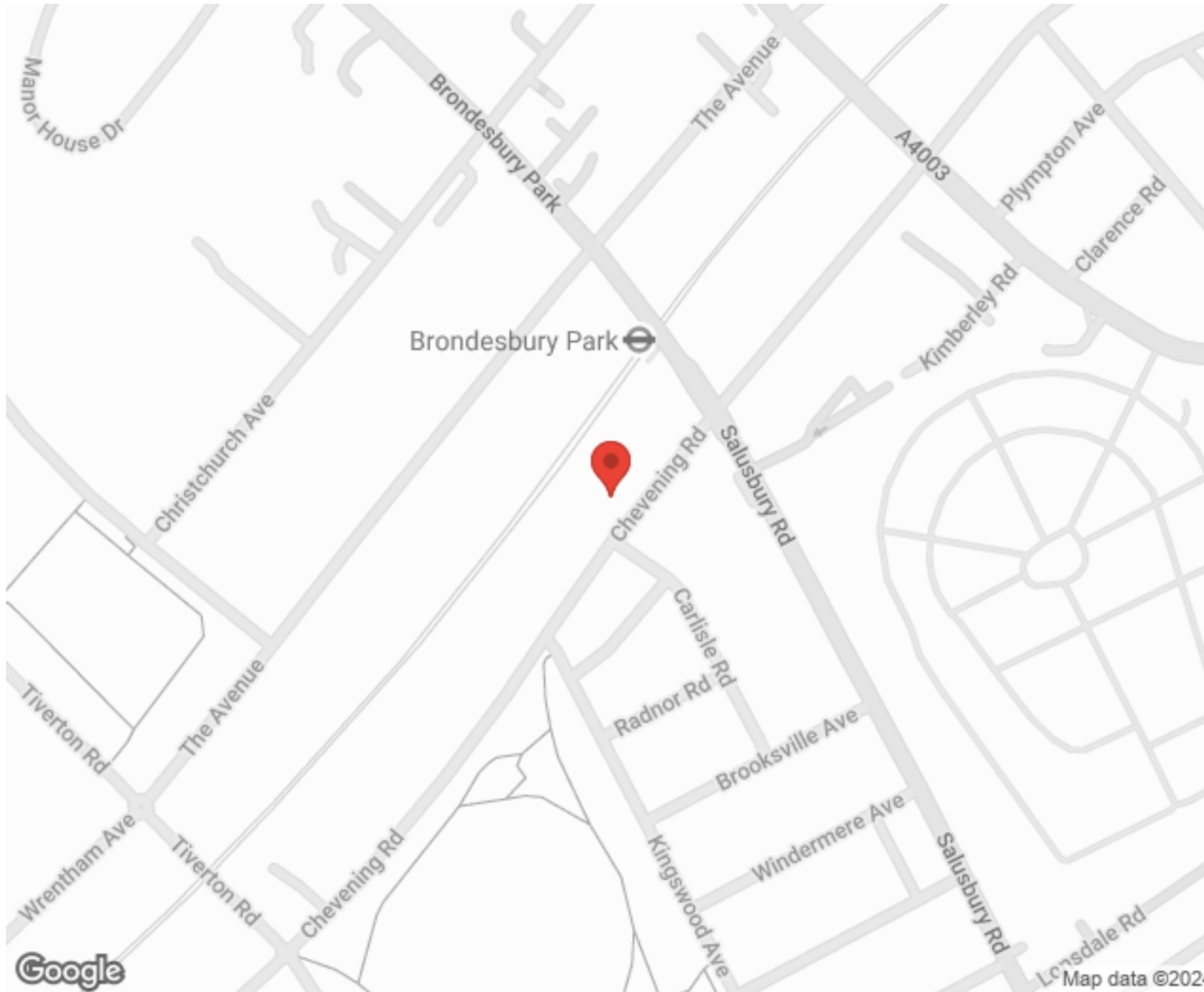
"I used Vita properties to find a flat recently and it was an overall professional, personalised and positive experience. Saira went the extra mile to accommodate to our needs and quick to help us whenever possible."



**MORE INFO, PICTURES,
CONTACT ON
OUR WEBSITE**



"Vita Properties is a very professional agency. My experience with them was incredible and the entire team was very helpful and kind throughout the renting process. I'd highly recommend!"



SCAN FOR MORE
GOOGLE REVIEWS






Google

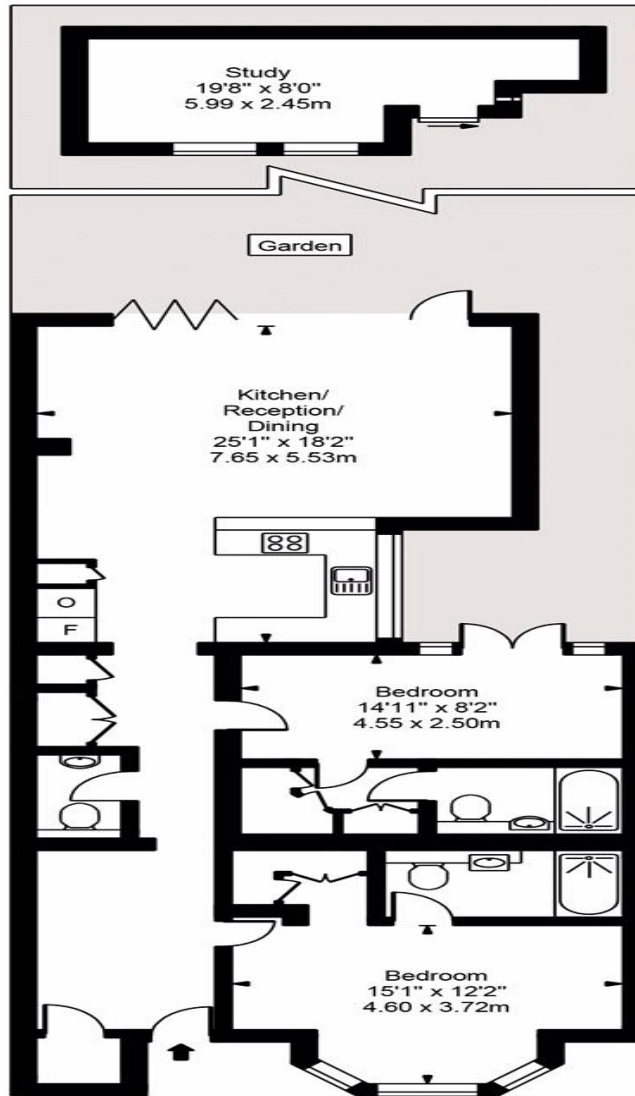


4.9 Stars | 132 Reviews

Find us on social media

-  vitaproperties
-  VitaProperties
-  VitaProperties

Chevening Road



Approx Gross Internal Area 1262 Sq Ft - 117.21 Sq M

For Illustration Purposes Only - Not To Scale
Floor plan by www.bestangle.co.uk