



Park Street, Mayfair, London, W1. | £2,150

- Within short walking distance of Oxford Street and Marble Arch station
- Elegant double volume reception room/dining room
- Wooden floors
- Large double bedrooms
- Fireplaces and ornate cornicing comprising
- Guest WC
- Available immediately

"Vita Properties have been tremendously helpful throughout the process of securing/renting my flat. Informative about the property, prompt communication, easy to use dashboard for sharing of information, and pleasant to work with. Highly recommend!"

A superb incredibly spacious two double bedroom apartment situated on the 1st floor (via lift) of this smart period house just off Park Lane near Hyde Park, Marble Arch & Bond Street tubes. The apartment is decorated and furnished to the highest of standards in a contemporary, classic style with many beautiful period features including fireplaces and ornate cornicing comprising very spacious double reception room with dining area, fully fitted and equipped kitchen, guest cloakroom, two very large sumptuous double bedrooms with fitted wardrobes and two super luxury bathrooms with separate shower cubicles (both ensuite). A garage may also available by separate negotiation.



Oliver Kent

✉ oliver.kent@vitaproperties.uk
☎ +4477 7274 0351



🏠	Flat
🔑	Available to Let
🛏️	x 2
🛏️	x 2
🚿	x 2

"I was very impressed with Vita and their network of buyers. When the sale of my flat fell through (twice) they worked extremely hard to find new buyers in a difficult market - thank you!"



"Working with Vita properties has been a smooth experience! No complaints at all. Our letting agent, Diana has been fantastic and very helpful throughout the whole process. I would highly recommend both Vita properties and Diana."



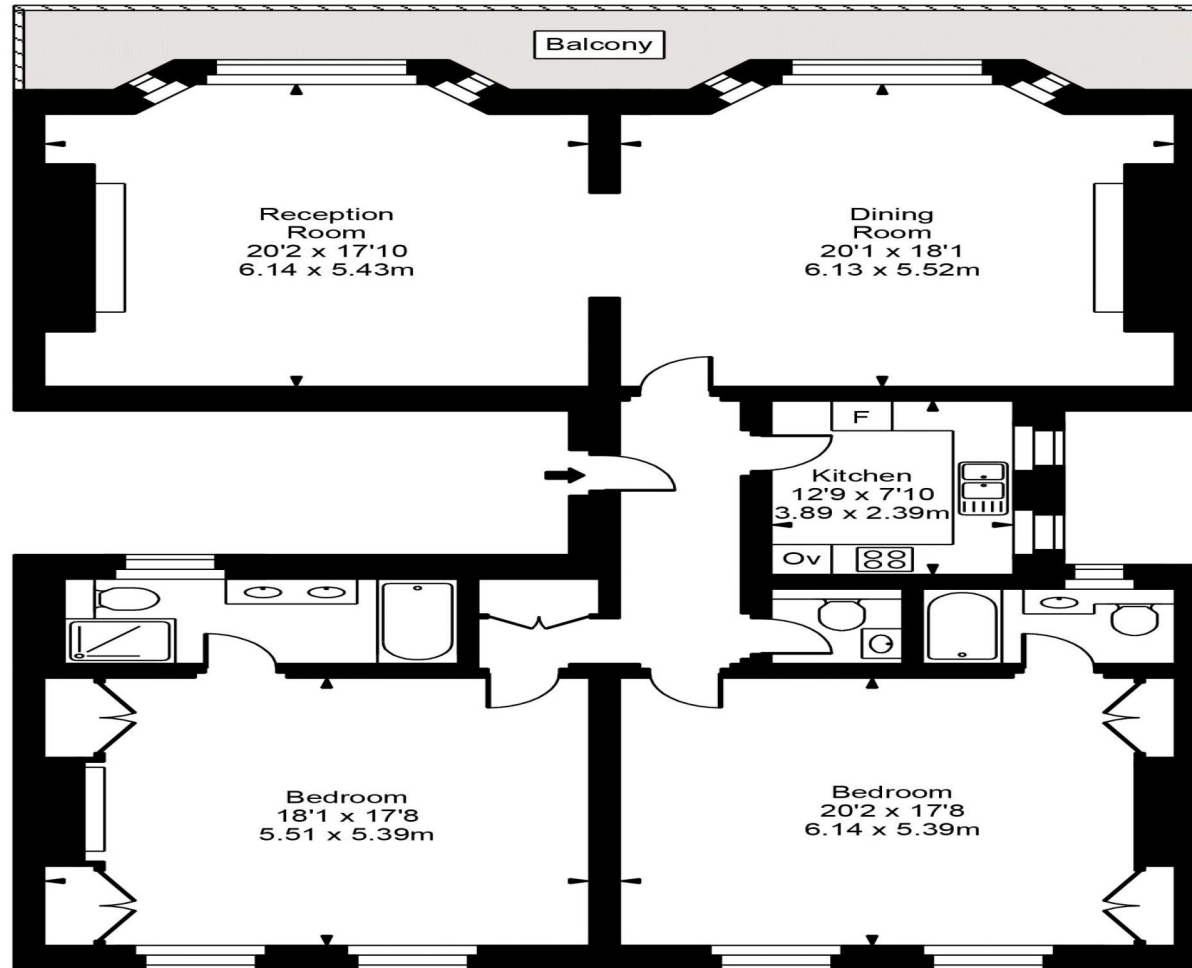
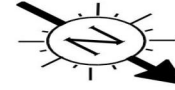
"I used Vita properties to find a flat recently and it was an overall professional, personalised and positive experience. Saira went the extra mile to accommodate to our needs and quick to help us whenever possible."



**MORE INFO, PICTURES,
CONTACT ON
OUR WEBSITE**



Park Street



First Floor

Approx Gross Internal Area **1753 Sq Ft - 162.85 Sq M**

FOR ILLUSTRATIVE PURPOSES ONLY. NOT TO SCALE.

Whilst every attempt has been made to ensure the accuracy of the floorplan shown, all measurements, positioning, fixtures, fittings and any other data shown are an approximate interpretation for illustrative purposes only and are not to scale. No responsibility is taken for any error, omission, miss-statement or use of data shown.
www.bestangle.co.uk

