



Winchester Road, Swiss Cottage, London, NW3 .| £695

- Lift
- Reception Room
- 24 Hour Security
- Recently Development

- 4th floor
- Close to local amenities
- 995 Sq Ft /92 Sq m

"Vita Properties have been tremendously helpful throughout the process of securing/renting my flat. Informative about the property, prompt communication, easy to use dashboard for sharing of information, and pleasant to work with. Highly recommend!"

Available immediately is this two double bedroom, two bathroom apartment (one en-suite) in a recently built modern development.

The property benefits from a modern and contemporary finish with wood floors, tiled bathrooms, fully fitted kitchen and is conveniently located moments from local shopping and transport facilities of Swiss Cottage and the Finchley Road and a stone's throw of Primrose Hill and Regent's Park



Oliver Kent

✉ [oliver.kent@vitaproperties.uk](mailto:oliver.kent@vitaproperties.uk)  
☎ +4477 7274 0351

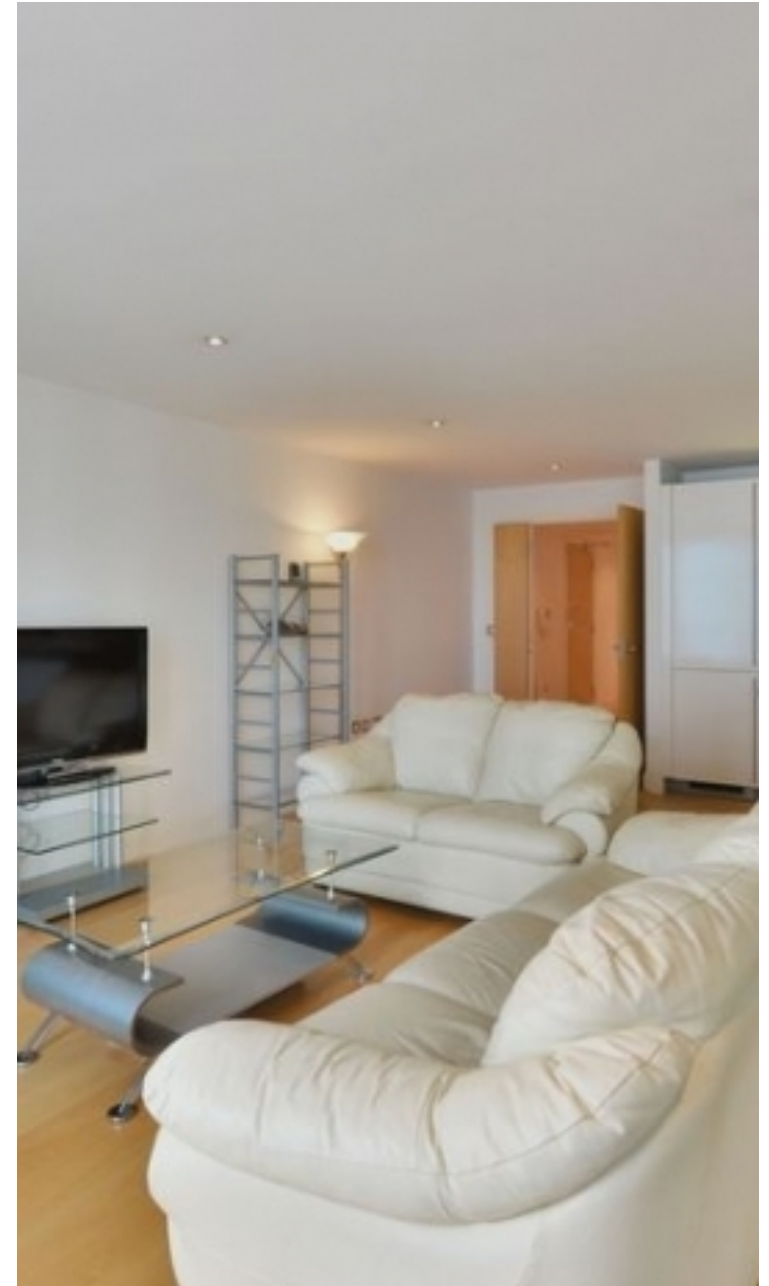


🏠	Flat
🔑	Available to Let
🛏	x 2
🛏	x 1
🚿	x 2



"I was very impressed with Vita and their network of buyers. When the sale of my flat fell through (twice) they worked extremely hard to find new buyers in a difficult market - thank you!"

---



"Working with Vita properties has been a smooth experience! No complaints at all. Our letting agent, Diana has been fantastic and very helpful throughout the whole process. I would highly recommend both Vita properties and Diana."

---



"I used Vita properties to find a flat recently and it was an overall professional, personalised and positive experience. Saira went the extra mile to accommodate to our needs and quick to help us whenever possible."

---

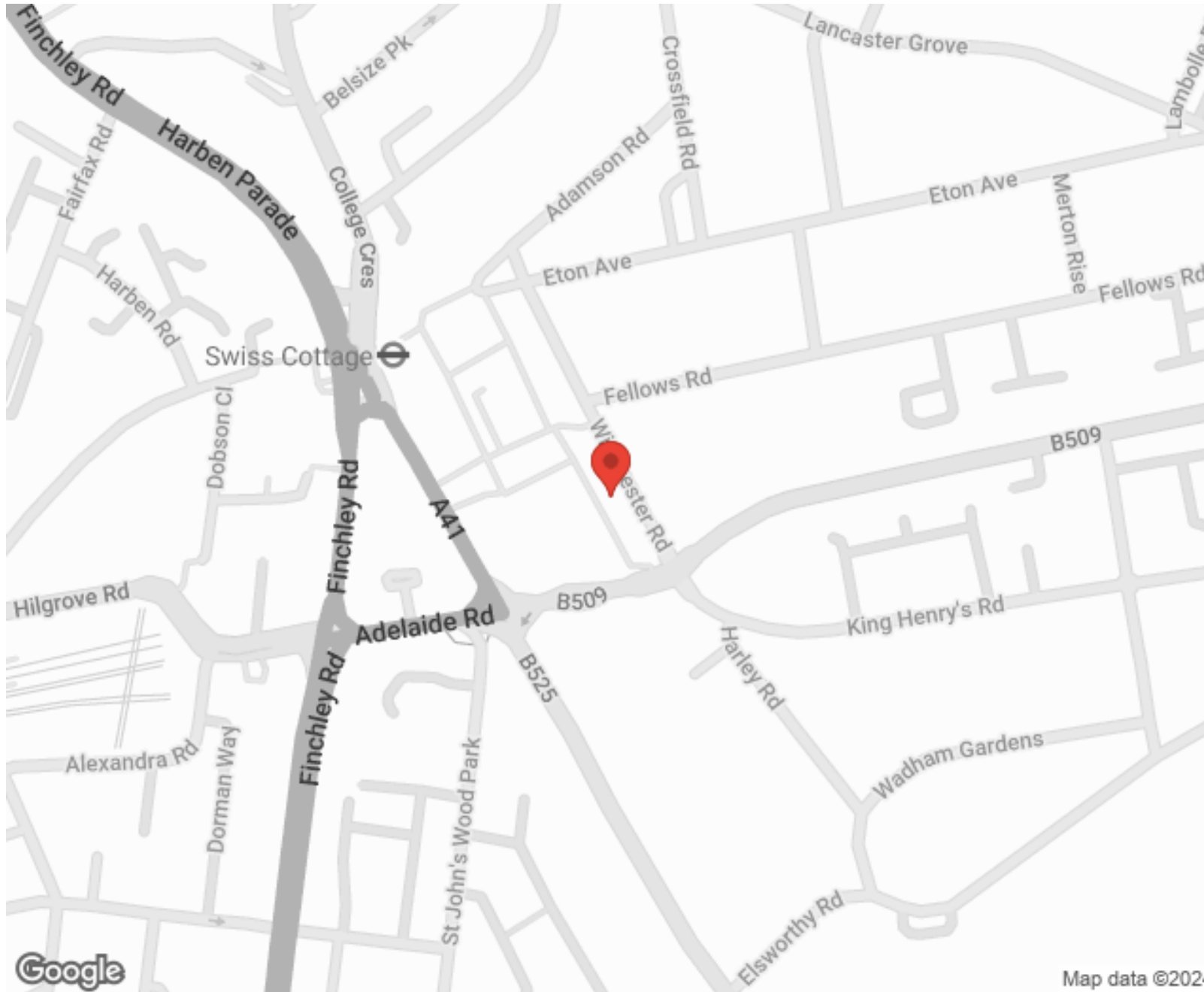


**MORE INFO, PICTURES,  
CONTACT ON  
OUR WEBSITE**



"Vita Properties is a very professional agency. My experience with them was incredible and the entire team was very helpful and kind throughout the renting process. I'd highly recommend!"

---



SCAN FOR MORE  
GOOGLE REVIEWS



Google



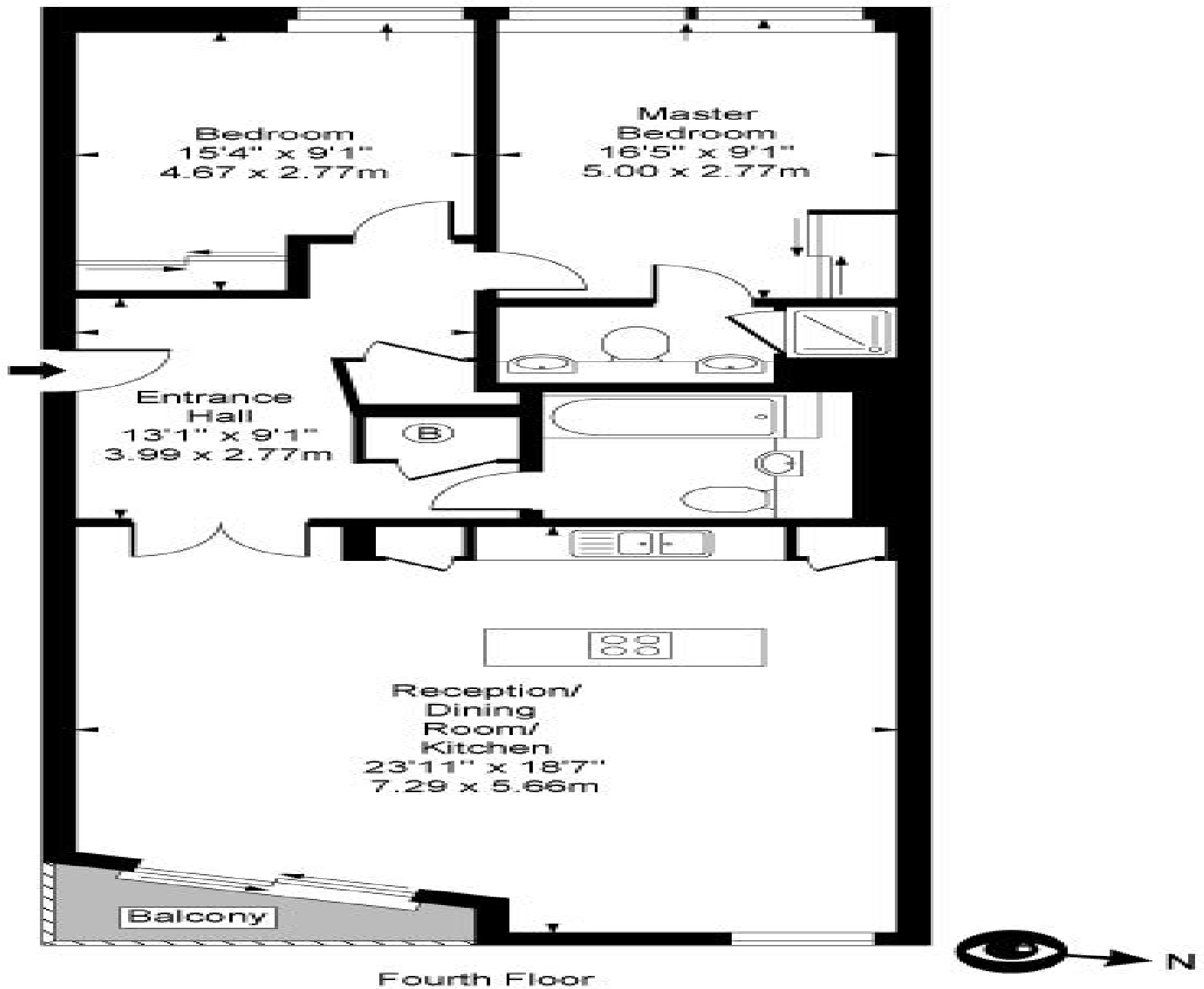
4.9 Stars | 132 Reviews

Find us on social media

 vitaproperties

 VitaProperties

 VitaProperties



Fourth Floor

Approx Gross Internal Area

950 Sq Ft - 88.26 Sq M