



Fairhazel Gardens, South Hampstead, London, NW6 .| £575

- Moments to Shops
- 2 Receptions
- 5 Mins walk to Swiss Cottage Tube
- Wooden Floors

- Mews House
- Available immediately

"Vita Properties have been tremendously helpful throughout the process of securing/renting my flat. Informative about the property, prompt communication, easy to use dashboard for sharing of information, and pleasant to work with. Highly recommend!"

Vita Properties are delighted to offer this recently refurbished semi-detached house to let in South Hampstead. This unique property benefits from a double reception, separate kitchen, wood flooring throughout and a lovely rear patio. Accommodation comprises three double bedrooms, large family bathroom, guest cloakroom. Close to all the amenities of Swiss Cottage and Finchley Road. Only 4 minutes walk from Swiss Cottage station.

(jubilee line) Available immediately - offered furnished - Perfect for a small family or sharers



Oliver Kent

✉ oliver.kent@vitaproperties.uk
☎ +4477 7274 0351



🏠 House
🔑 Available
to Let
🛏 x 3
🛋 x 2
🚿 x 1



"I was very impressed with Vita and their network of buyers. When the sale of my flat fell through (twice) they worked extremely hard to find new buyers in a difficult market - thank you!"



"Working with Vita properties has been a smooth experience! No complaints at all. Our letting agent, Diana has been fantastic and very helpful throughout the whole process. I would highly recommend both Vita properties and Diana."



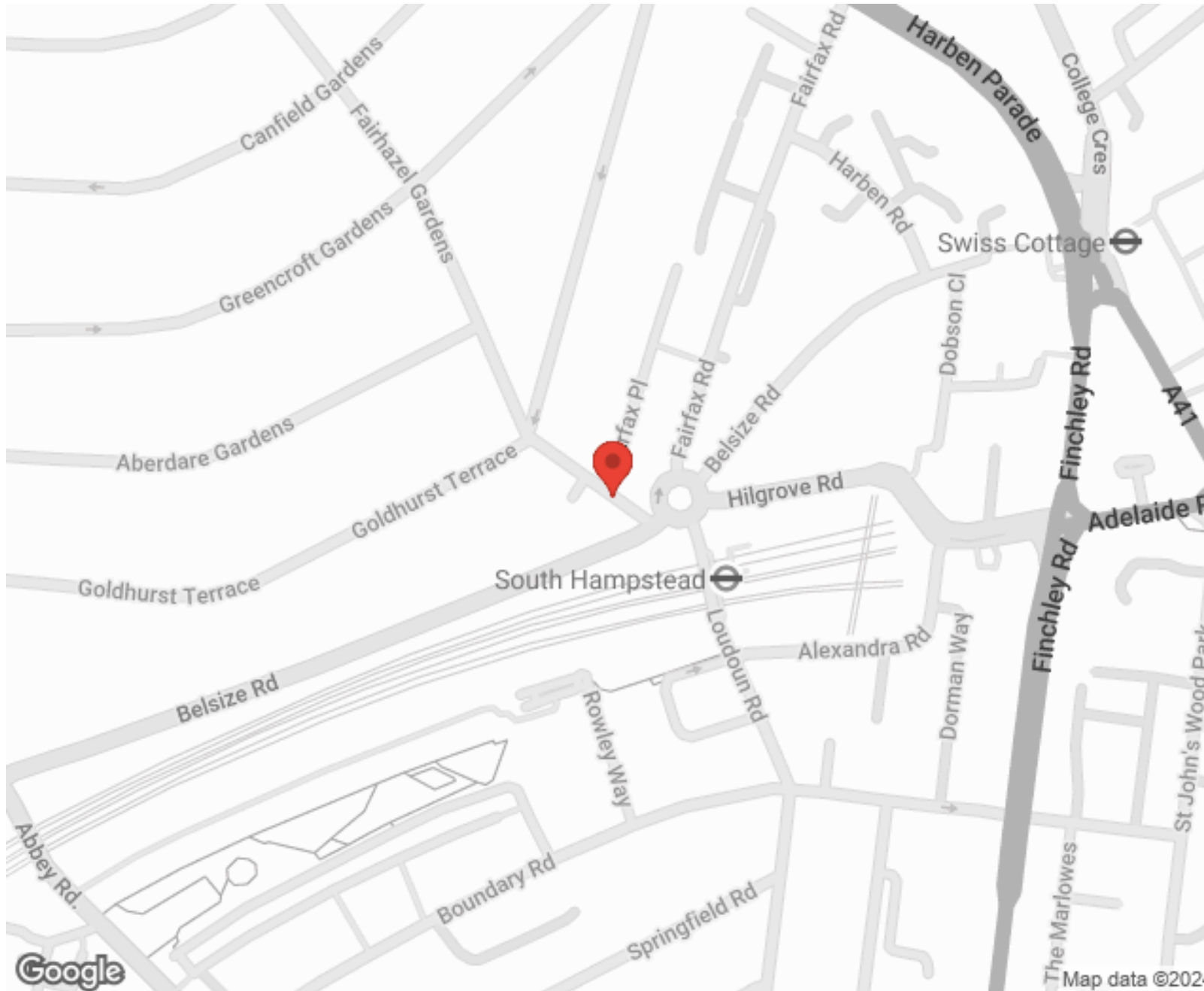
"I used Vita properties to find a flat recently and it was an overall professional, personalised and positive experience. Saira went the extra mile to accommodate to our needs and quick to help us whenever possible."



**MORE INFO, PICTURES,
CONTACT ON
OUR WEBSITE**



"Vita Properties is a very professional agency. My experience with them was incredible and the entire team was very helpful and kind throughout the renting process. I'd highly recommend!"



SCAN FOR MORE
GOOGLE REVIEWS



Google

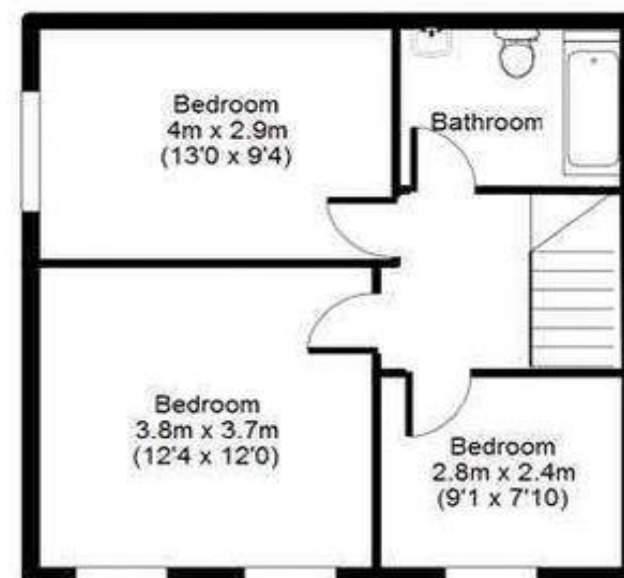


4.9 Stars | 132 Reviews

Find us on social media



Fairhazel Gardens NW6
APPROX GROSS INTERNAL FLOOR AREA: 926 sq. ft / 86 sq. m



Floorplan for identity purposes only
Measurements are approximate and not to scale