



Hampstead, London, NW3 .| £650

- Private garden leading onto extended communal gardens
- Beautifully decorated
- Wooden floors
- Master with dressing room and ensuite

- Available beg of November
- Pets allowed

"Vita Properties have been tremendously helpful throughout the process of securing/renting my flat. Informative about the property, prompt communication, easy to use dashboard for sharing of information, and pleasant to work with. Highly recommend!"

Available beg of November is this beautifully presented three double bedroom garden flat comprising approximately 1574 sq ft which has been interior designed to the highest specification and set within an impressive period conversion. The property benefits from it's own private entrance, an open plan fully fitted kitchen with large reception room which opens onto an exceptional landscaped private garden, utility room, master bedroom with stunning walk in wardrobe and contemporary ensuite bathroom, second double bedroom with fitted wardrobes and door to a further luxury bathroom and a third double bedroom with fitted wardrobes. This beautiful apartment is offered on an unfurnished basis.



Oliver Kent

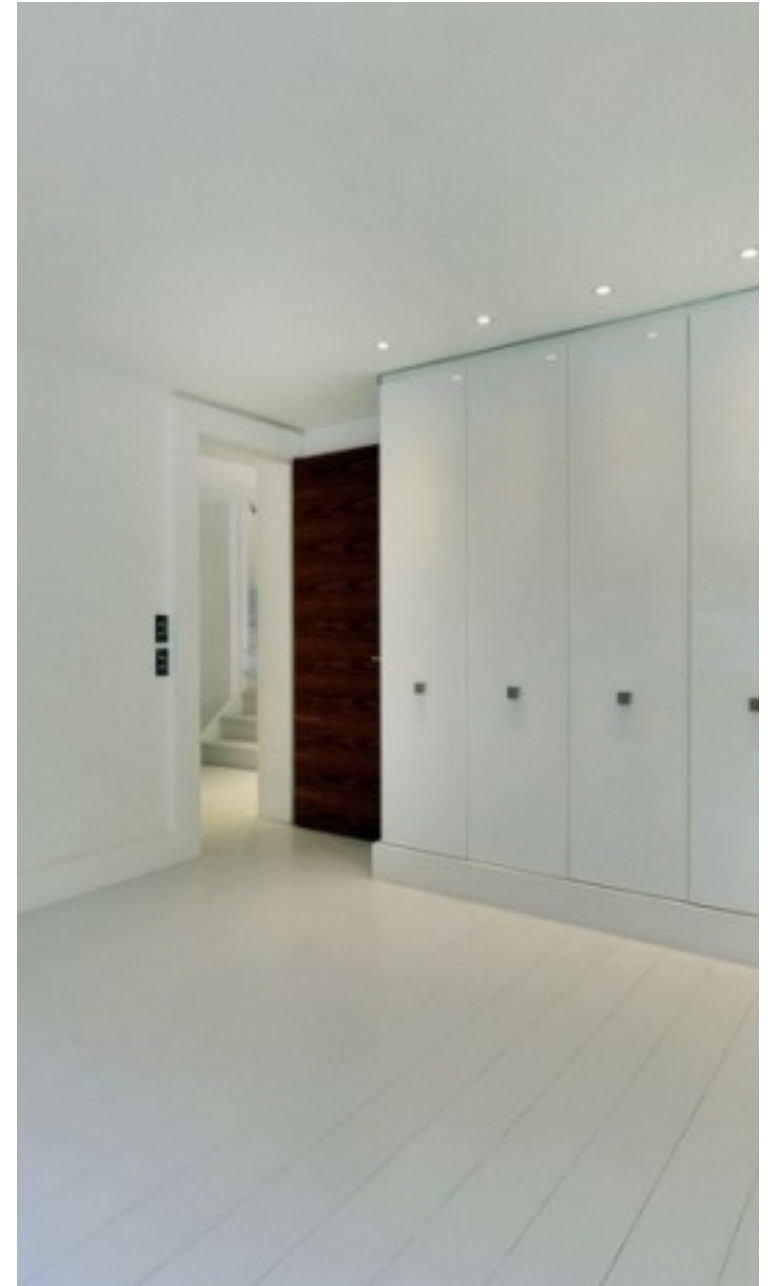
✉ oliver.kent@vitaproperties.uk

☎ +4477 7274 0351



| | |
|----|------------------|
| 🏠 | Flat |
| 🔑 | Available to Let |
| 🛏️ | x 3 |
| 🛋️ | x 1 |
| 🚿 | x 2 |

"I was very impressed with Vita and their network of buyers. When the sale of my flat fell through (twice) they worked extremely hard to find new buyers in a difficult market - thank you!"



"Working with Vita properties has been a smooth experience! No complaints at all. Our letting agent, Diana has been fantastic and very helpful throughout the whole process. I would highly recommend both Vita properties and Diana."



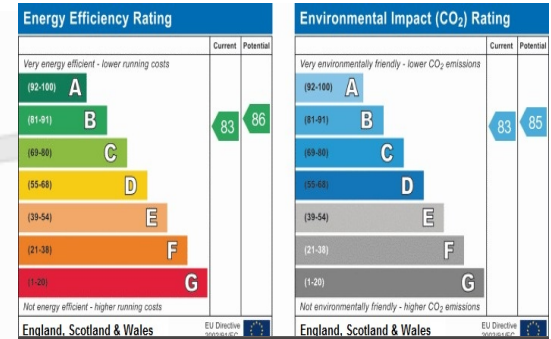
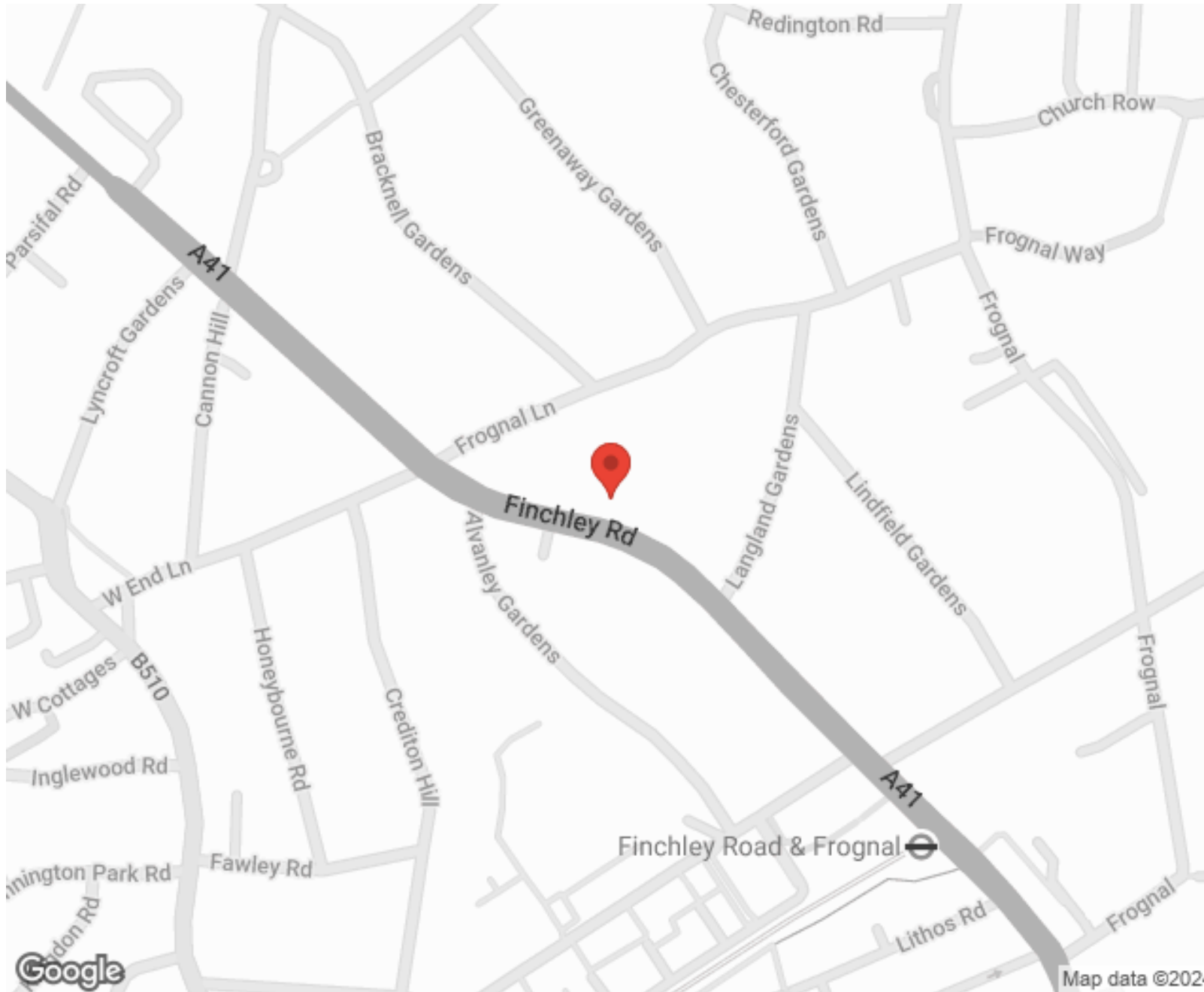
"I used Vita properties to find a flat recently and it was an overall professional, personalised and positive experience. Saira went the extra mile to accommodate to our needs and quick to help us whenever possible."



**MORE INFO, PICTURES,
CONTACT ON
OUR WEBSITE**



"Vita Properties is a very professional agency. My experience with them was incredible and the entire team was very helpful and kind throughout the renting process. I'd highly recommend!"



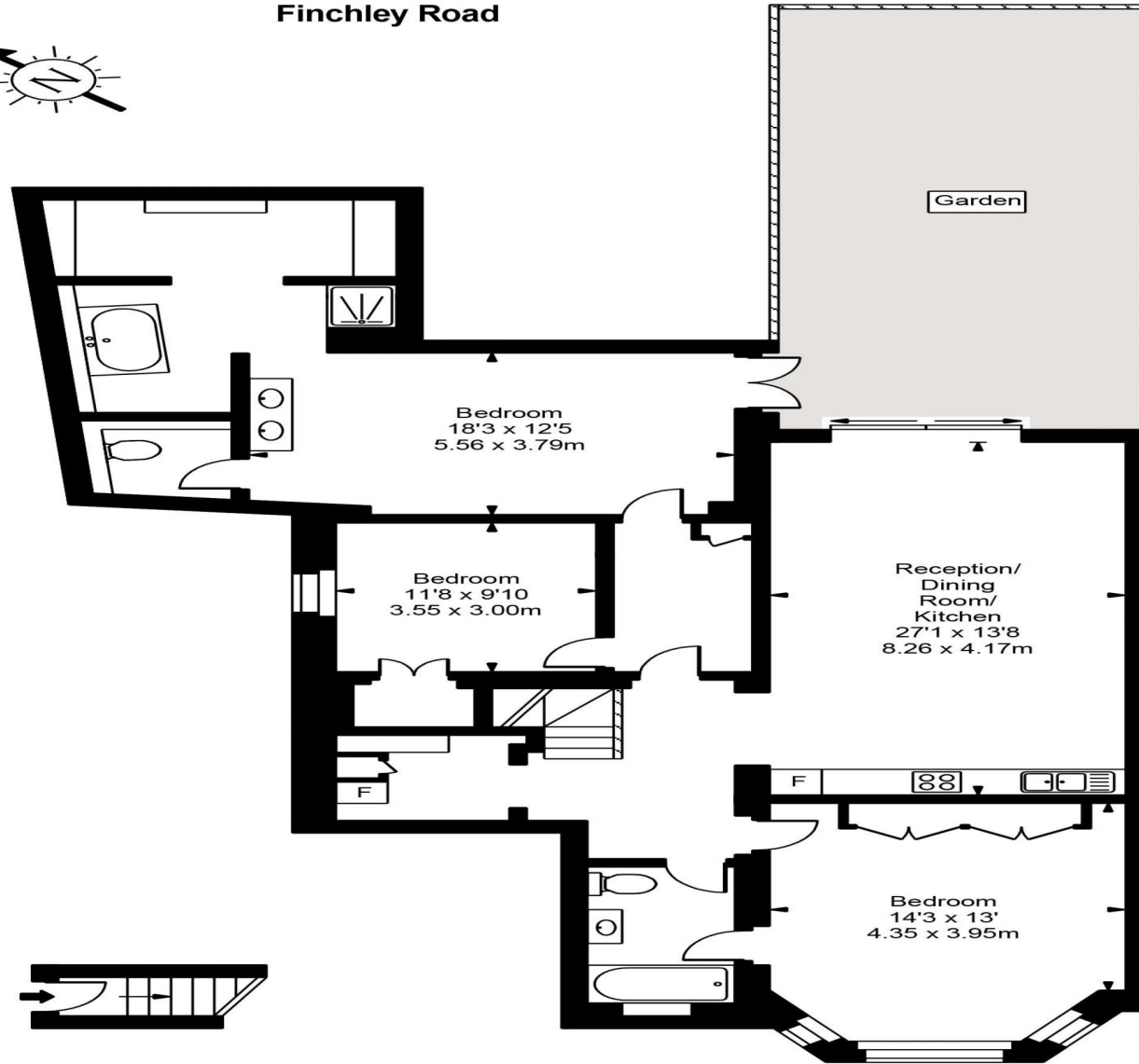
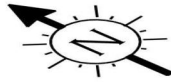
SCAN FOR MORE GOOGLE REVIEWS

Google
★★★★★
4.9 Stars | 132 Reviews

Find us on social media

- vitaproperties
- VitaProperties
- VitaProperties

Finchley Road



Ground Floor
Entrance



Approx Gross Internal Area

1573 Sq Ft - 146.16 Sq M

FOR ILLUSTRATIVE PURPOSES ONLY. NOT TO SCALE.

Whilst every attempt has been made to ensure the accuracy of the floorplan shown, all measurements, positioning, fixtures, fittings and any other data shown are an approximate interpretation for illustrative purposes only and are not to scale. No responsibility is taken for any error, omission, miss-statement or use of data shown.
Floor plan by www.bestangle.co.uk