



Randolph Avenue, Maida Vale, London, W9 .| £675

- Newly refurbished
- Access to communal gardens
- Moments from Maida Vale and Little Venice
- Period features throughout

- Unfurnished
- Available immediately

"Vita Properties have been tremendously helpful throughout the process of securing/renting my flat. Informative about the property, prompt communication, easy to use dashboard for sharing of information, and pleasant to work with. Highly recommend!"

Available immediately is this beautifully presented, newly refurbished raised ground floor two bedroom apartment set within Stucco fronted building and having the added benefit of direct access and use of stunning communal gardens. Full of period features throughout including coving, cornicing, high ceilings, sash window and stained features glass this property is a must see. Having undergone extensive and complete renovation the flat comprises two very large bedrooms, bathroom, and open plan reception with wood flooring. Brand new fixtures and fittings throughout.



Oliver Kent

✉ oliver.kent@vitaproperties.uk

☎ +4477 7274 0351



🏠	Flat
🔑	Available to Let
🛏️	x 2
🛋️	x 1
🚿	x 1



"I was very impressed with Vita and their network of buyers. When the sale of my flat fell through (twice) they worked extremely hard to find new buyers in a difficult market - thank you!"



"Working with Vita properties has been a smooth experience! No complaints at all. Our letting agent, Diana has been fantastic and very helpful throughout the whole process. I would highly recommend both Vita properties and Diana."



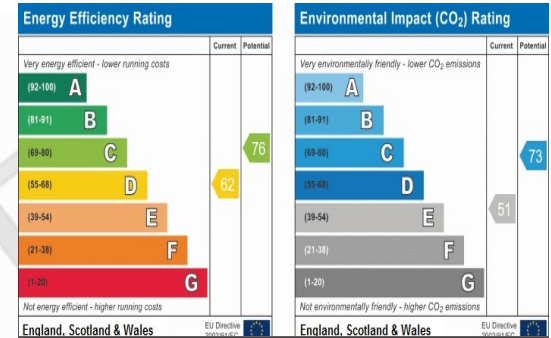
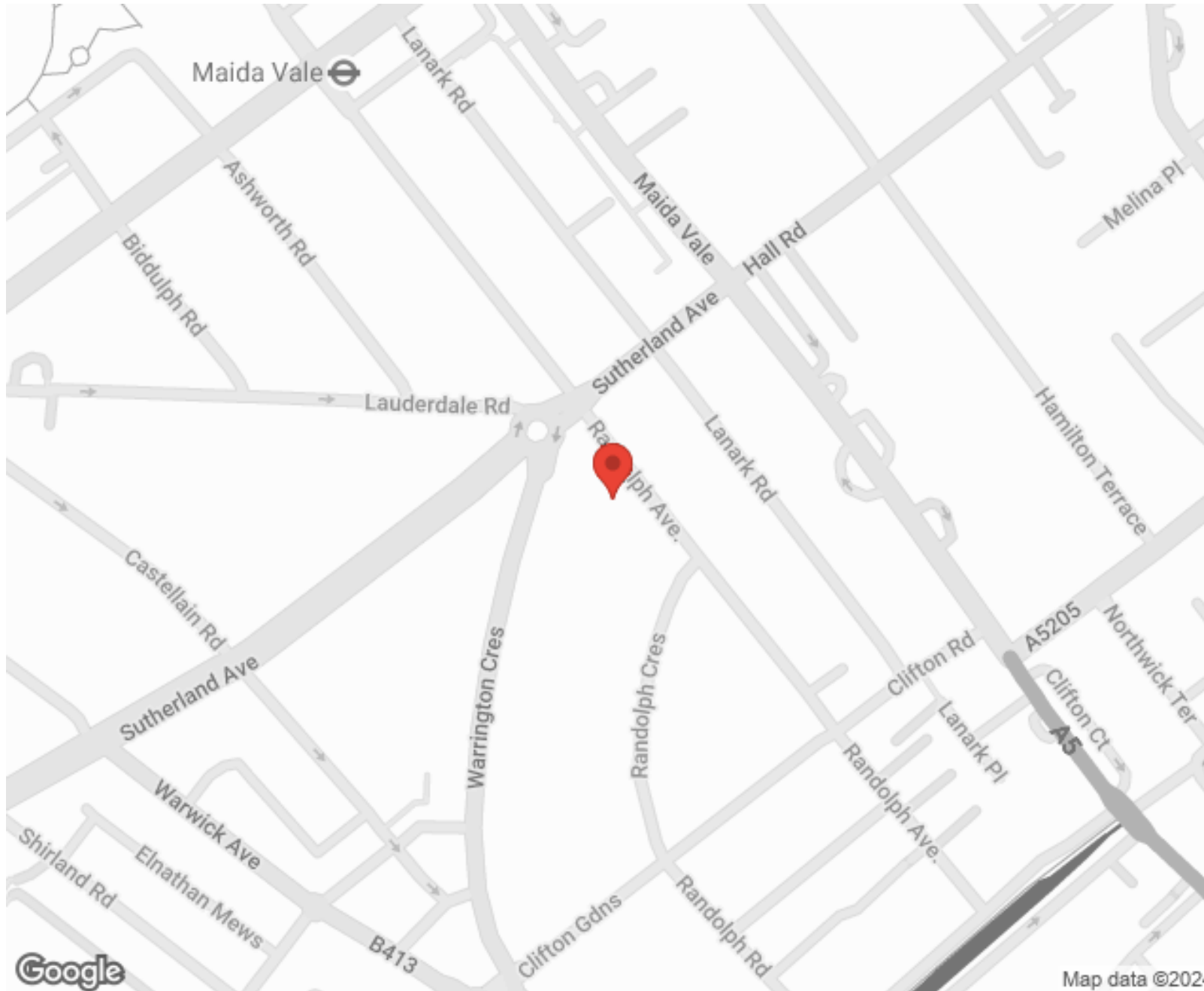
"I used Vita properties to find a flat recently and it was an overall professional, personalised and positive experience. Saira went the extra mile to accommodate to our needs and quick to help us whenever possible."



**MORE INFO, PICTURES,
CONTACT ON
OUR WEBSITE**



"Vita Properties is a very professional agency. My experience with them was incredible and the entire team was very helpful and kind throughout the renting process. I'd highly recommend!"



SCAN FOR MORE
GOOGLE REVIEWS



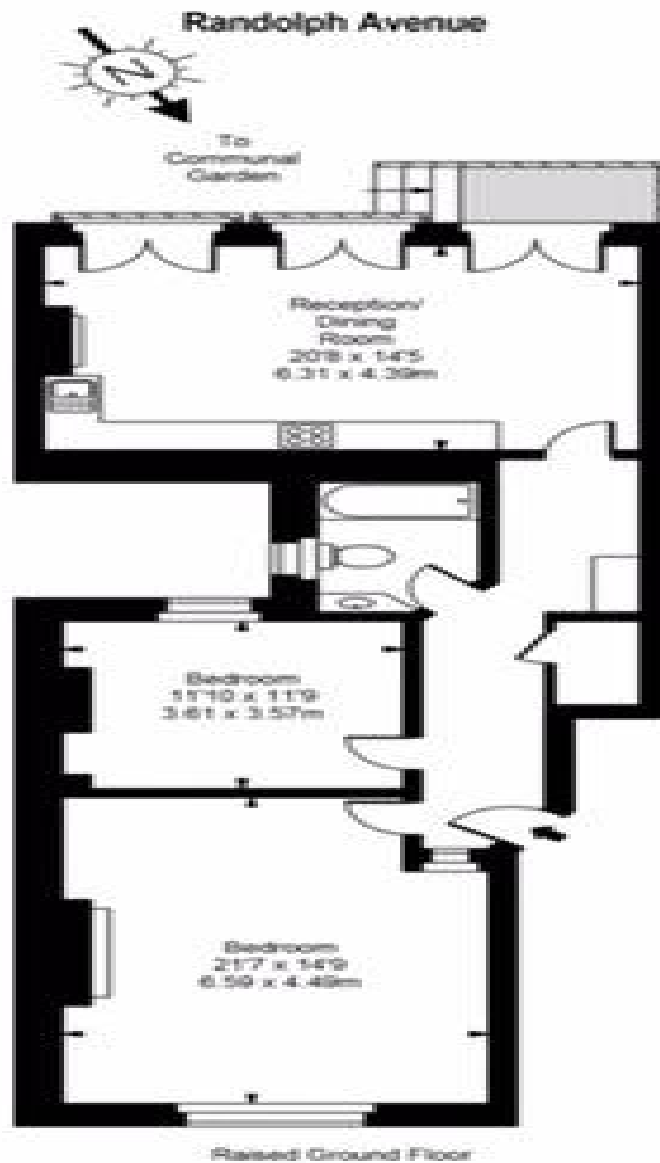
Google



4.9 Stars | 132 Reviews

Find us on social media

- vitaproperties
- VitaProperties
- VitaProperties



Approx Gross Internal Area 986 Sq Ft - 91.60 Sq M

FOR ILLUSTRATIVE PURPOSES ONLY - NOT TO SCALE

While every effort has been made to ensure the accuracy of the description, all measurements, positioning, fixtures, fittings and any other data shown are an approximate guide for information purposes only and may be subject to change without notice. Floor plan by www.bestangle.co.uk