



## Marlborough Mansions, Cannon Hill, West Hampstead, London, NW6 .| £1,000

- Spacious
- Modern
- Sought after development
- Double Aspect Living Room

- Wooden Floors
- [Mycounciltax.org.uk](http://Mycounciltax.org.uk) - G £2214 per annum
- Lift

"Vita Properties have been tremendously helpful throughout the process of securing/renting my flat. Informative about the property, prompt communication, easy to use dashboard for sharing of information, and pleasant to work with. Highly recommend!"

Available 01 November 2020 - Vita Properties are delighted to offer this beautifully presented 4 bedroom apartment situated within the ever popular BAM Estate. The property boasts a floor area of approx 1900 sq ft, 3 double bedrooms & 1 single/study, a large double aspect reception room, 2 recently refurbished bathrooms, kitchen/breakfast room with direct access to dining room, utility room, guest WC, communal gardens and onsite management company. Marlborough Mansions is conveniently located in the heart of West Hampstead and benefits a short walk to a selection of shops, restaurants and public transport which include West Hampstead tube station (Jubilee Line) & West Hampstead (Thames Link).



Oliver Kent

✉ [oliver.kent@vitaproperties.uk](mailto:oliver.kent@vitaproperties.uk)

☎ +4477 7274 0351

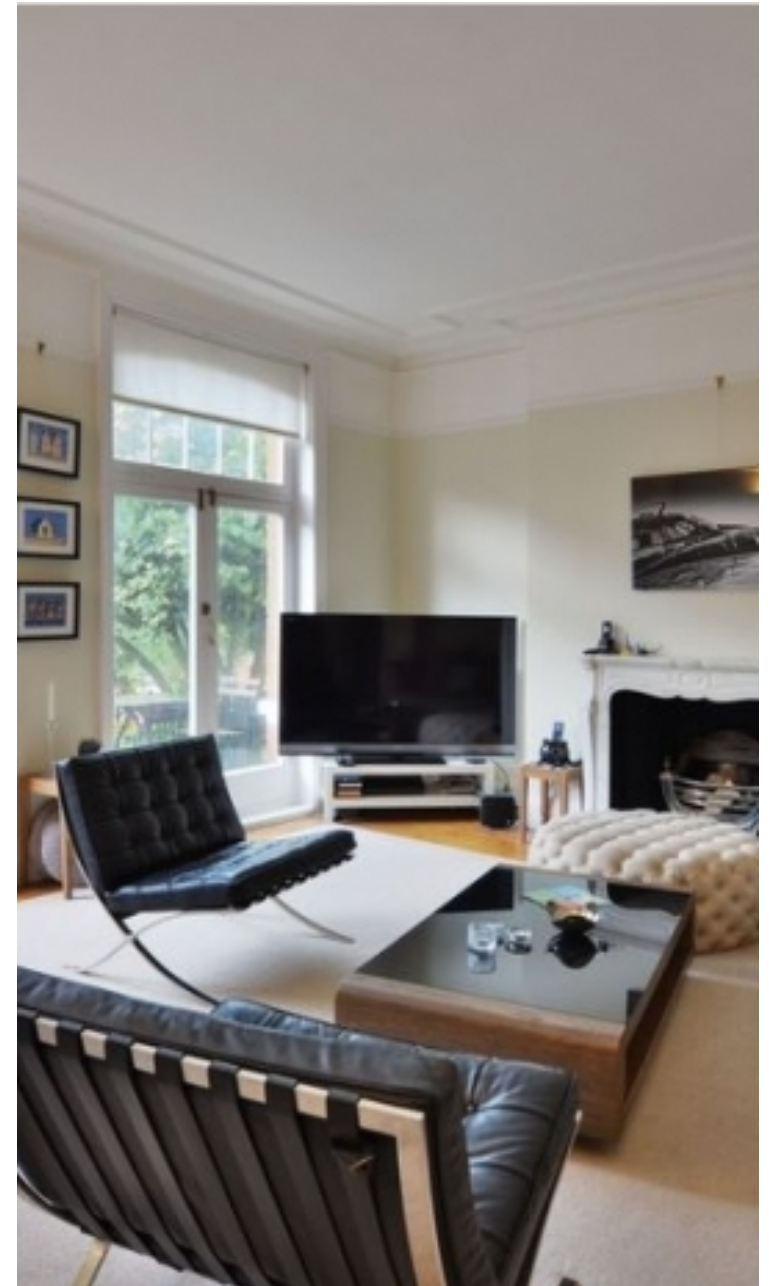


🏠	Flat
🔑	Available to Let
🛏️	x 4
🛏️	x 2
🚿	x 2



"I was very impressed with Vita and their network of buyers. When the sale of my flat fell through (twice) they worked extremely hard to find new buyers in a difficult market - thank you!"

---





"Working with Vita properties has been a smooth experience! No complaints at all. Our letting agent, Diana has been fantastic and very helpful throughout the whole process. I would highly recommend both Vita properties and Diana."

---



"I used Vita properties to find a flat recently and it was an overall professional, personalised and positive experience. Saira went the extra mile to accommodate to our needs and quick to help us whenever possible."

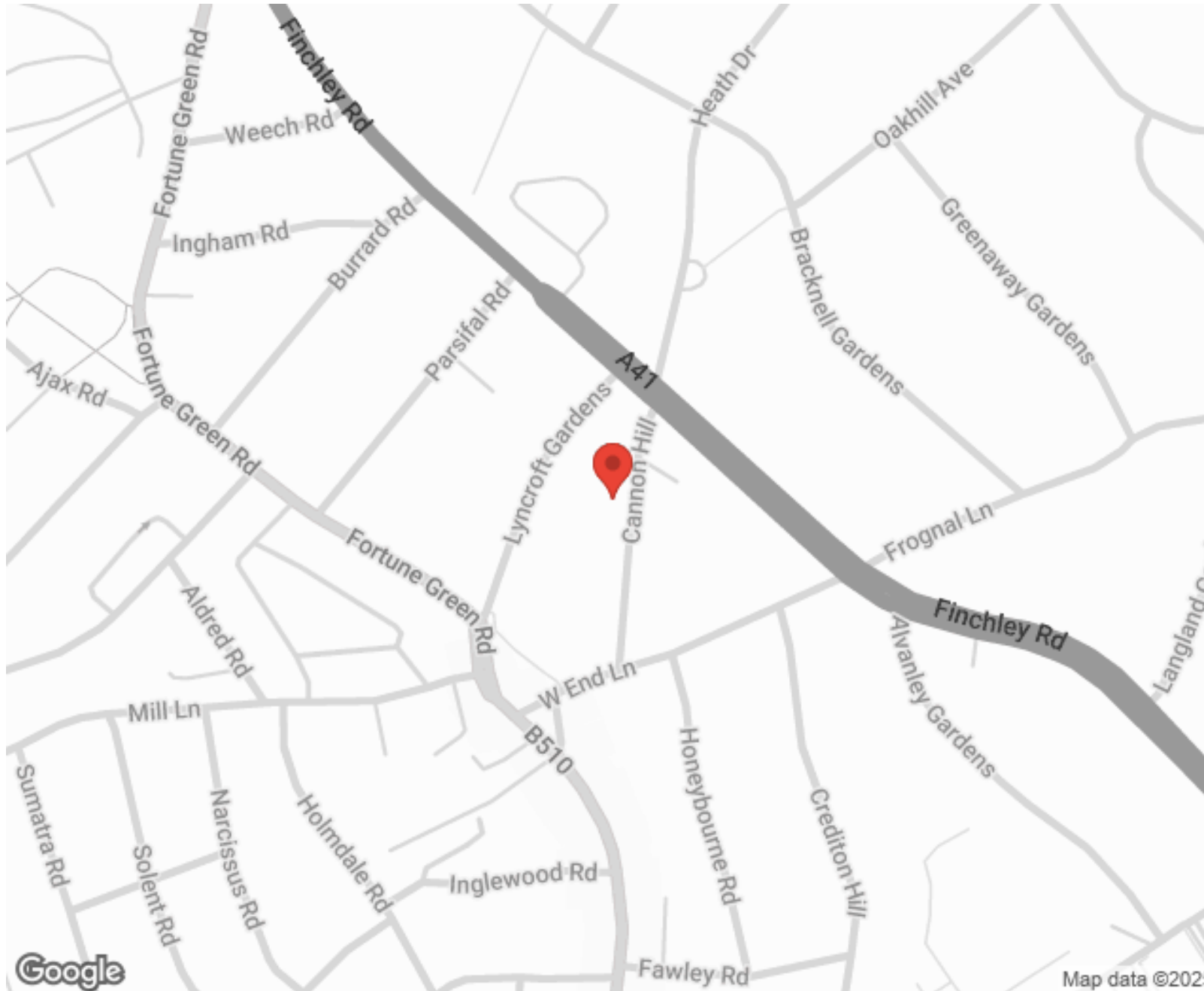
---



**MORE INFO, PICTURES,  
CONTACT ON  
OUR WEBSITE**



"Vita Properties is a very professional agency. My experience with them was incredible and the entire team was very helpful and kind throughout the renting process. I'd highly recommend!"



Energy Efficiency Rating		Environmental Impact (CO <sub>2</sub> ) Rating	
Current	Potential	Current	Potential
Very energy efficient - lower running costs			
Very environmentally friendly - lower CO <sub>2</sub> emissions			
(92-100) A		(92-100) A	
(81-91) B		(81-91) B	
(69-80) C		(69-80) C	
(55-68) D		(55-68) D	
(39-54) E		(39-54) E	
(21-38) F		(21-38) F	
(1-20) G		(1-20) G	
Not energy efficient - higher running costs			
Not environmentally friendly - higher CO <sub>2</sub> emissions			
	71		66
	55		49

England, Scotland & Wales EU Directive

SCAN FOR MORE  
GOOGLE REVIEWS






Google

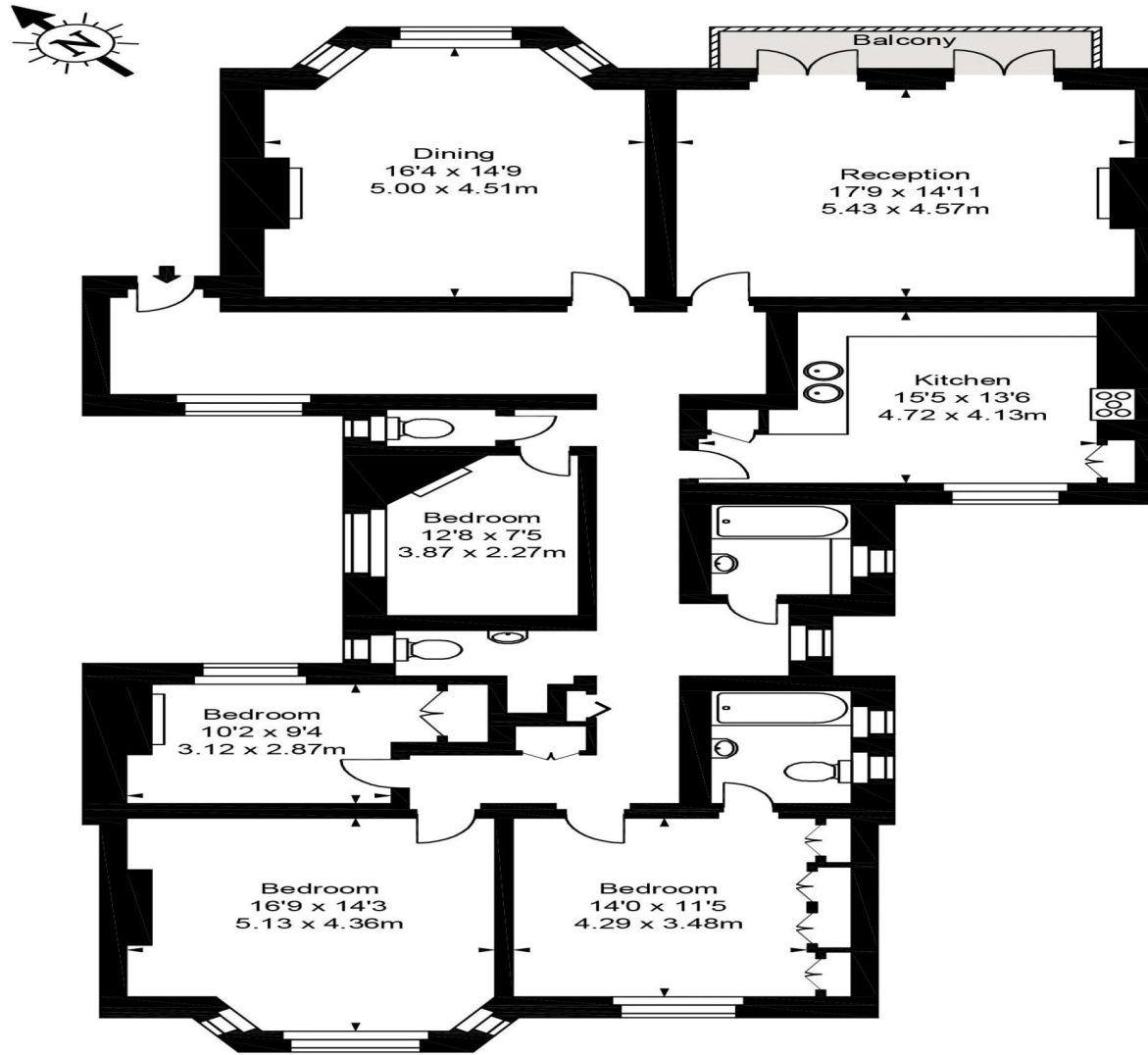


4.9 Stars | 132 Reviews

Find us on social media

-  vitaproperties
-  VitaProperties
-  VitaProperties

# Marlborough Mansions



First Floor

Approx Gross Internal Area **2074. Sq Ft - 192.77 Sq M**



FOR ILLUSTRATIVE PURPOSES ONLY. NOT TO SCALE.

Whilst every attempt has been made to ensure the accuracy of the floorplan shown, all measurements, positioning, fixtures, fittings and any other data shown are an approximate interpretation for illustrative purposes only and are not to scale. No responsibility is taken for any error, omission, miss-statement or use of data shown.

Floor plan by [www.bestangle.co.uk](http://www.bestangle.co.uk)