



St. Johns Wood Road, London, NW8 .| £500

- Lift
- Porter and parking
- Communal gardens
- Furnished

- A short stroll to Regents Park and St Johns Wood
- Available 11th May

"Vita Properties have been tremendously helpful throughout the process of securing/renting my flat. Informative about the property, prompt communication, easy to use dashboard for sharing of information, and pleasant to work with. Highly recommend!"

Available immediately - A stunning one bedroom furnished apartment situated on the first floor (with lift) of this exclusive new building. The apartment benefits from underground parking and 24 hour portorage and communal gardens.

This modern block is located within moments of Regents Park and St John's Wood, the amenities are also a short distance away



Oliver Kent

✉ oliver.kent@vitaproperties.uk
☎ +4477 7274 0351



🏠	Flat
🔑	Available to Let
🛏️	x 1
🚗	x 1
🚶	x 1

"I was very impressed with Vita and their network of buyers. When the sale of my flat fell through (twice) they worked extremely hard to find new buyers in a difficult market - thank you!"



"Working with Vita properties has been a smooth experience! No complaints at all. Our letting agent, Diana has been fantastic and very helpful throughout the whole process. I would highly recommend both Vita properties and Diana."



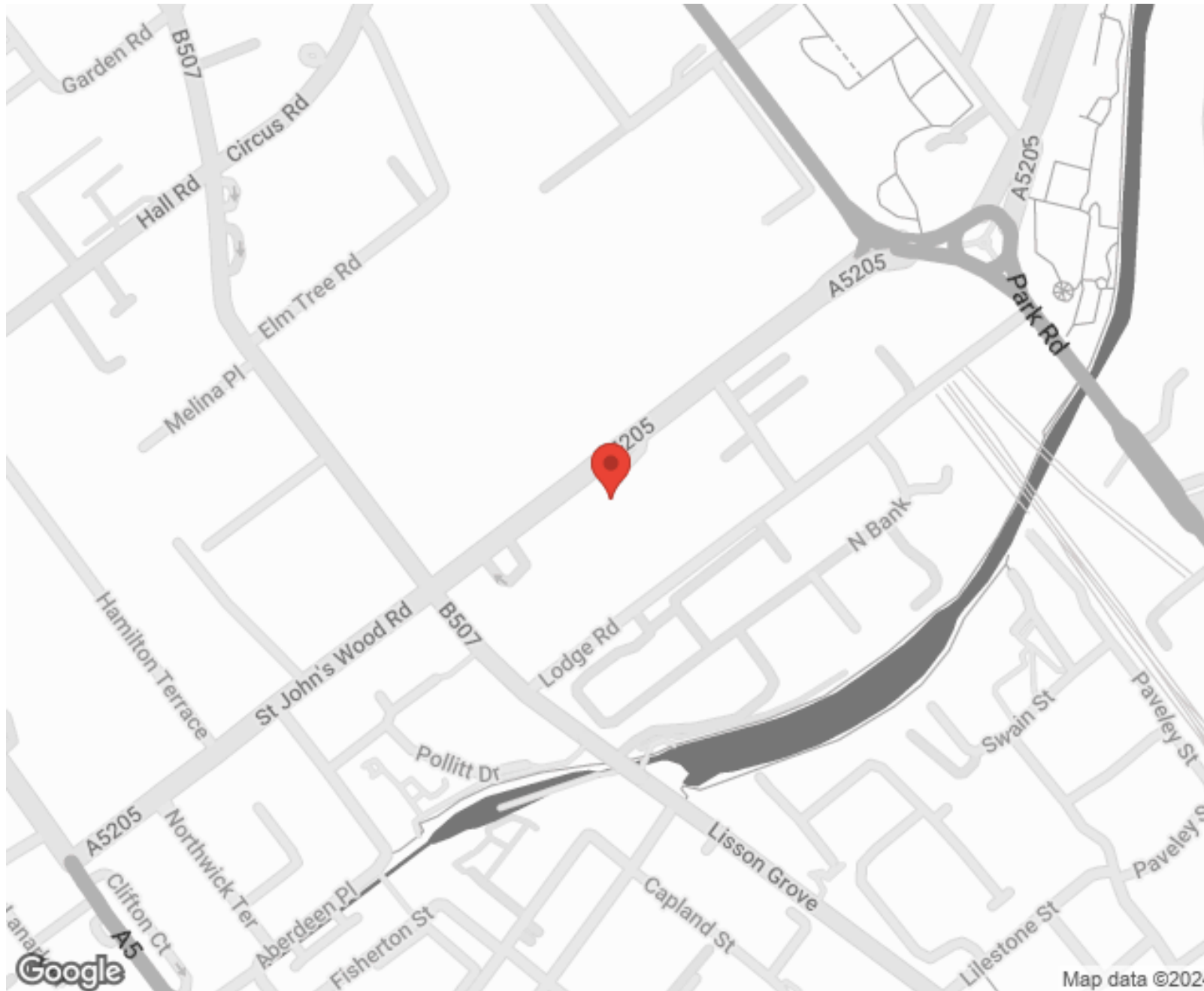
"I used Vita properties to find a flat recently and it was an overall professional, personalised and positive experience. Saira went the extra mile to accommodate to our needs and quick to help us whenever possible."



**MORE INFO, PICTURES,
CONTACT ON
OUR WEBSITE**



"Vita Properties is a very professional agency. My experience with them was incredible and the entire team was very helpful and kind throughout the renting process. I'd highly recommend!"



SCAN FOR MORE
GOOGLE REVIEWS




Google



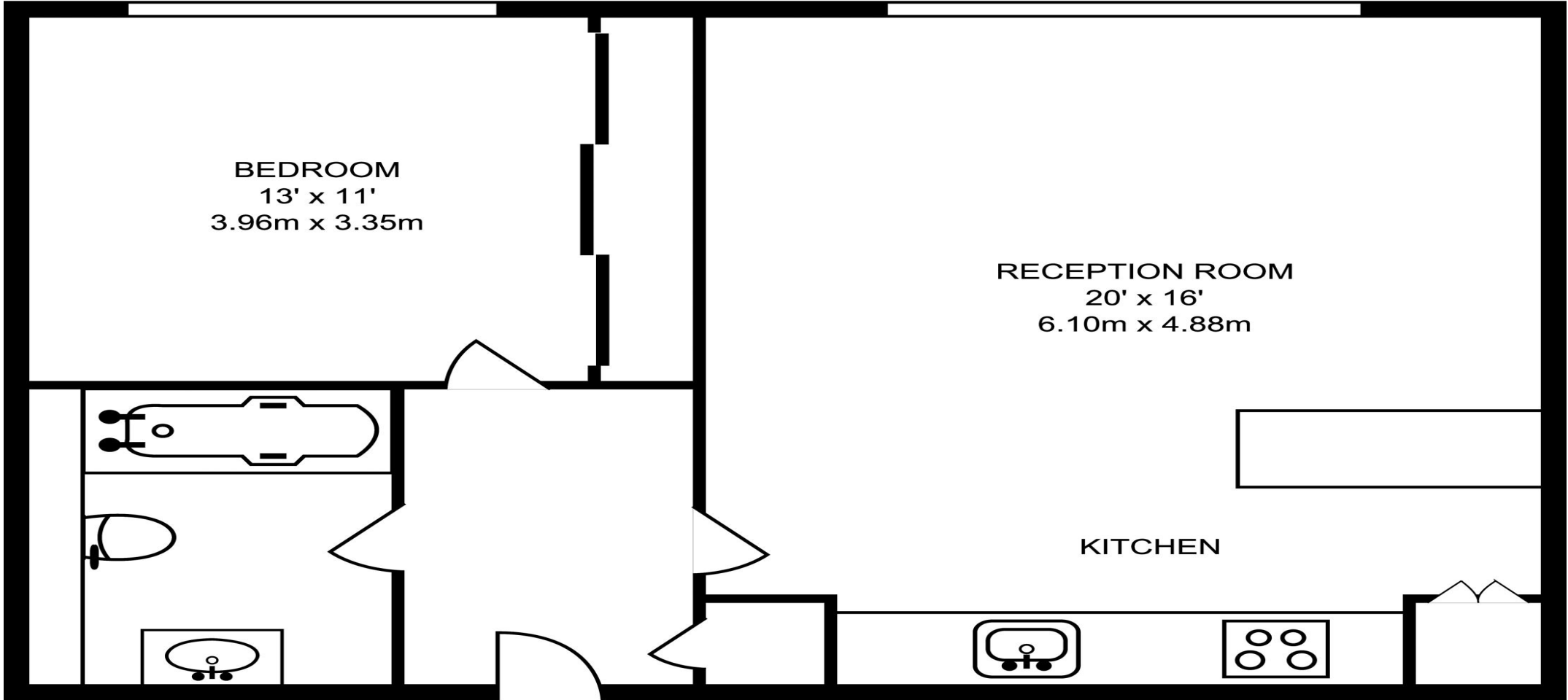
4.9 Stars | 132 Reviews

Find us on social media

 vitaproperties

 VitaProperties

 VitaProperties



BEDROOM
13' x 11'
3.96m x 3.35m

RECEPTION ROOM
20' x 16'
6.10m x 4.88m

KITCHEN



FIRST FLOOR
585 SQ FT/54.40 SQ M