



Belsize Park Gardens, Belsize Park, London, NW3 .| £650

- Convenient for Englands Lane, Belsize Park and Primrose Hill
- Communal gardens
- 1st Floor
- Wooden floors
- Available now

"Vita Properties have been tremendously helpful throughout the process of securing/renting my flat. Informative about the property, prompt communication, easy to use dashboard for sharing of information, and pleasant to work with. Highly recommend!"

Available NOW - A trendy two double bedroom apartment located in the heart of Belsize Park and within moments of Belsize Village. Situated on the first floor of a white stucco fronted conversion, this impressive apartment further benefits a fully equipped open plan kitchen, a 22' reception, communal gardens and a fully tiled bathroom with a shower attachment. Conveniently located for Englands Lane, Belsize Park and Primrose Hill.



Saira Ishfaq

✉ saira@vitaproperties.uk

☎ +4475 5575 4510



🏠 Flat  
🔑 Under  
Negotiation  
🛋 x 2  
📺 x 1  
🚿 x 1

SCAN FOR  
A VIDEO  
WALKTHROUGH



"I was very impressed with Vita and their network of buyers. When the sale of my flat fell through (twice) they worked extremely hard to find new buyers in a difficult market - thank you!"

---



"Working with Vita properties has been a smooth experience! No complaints at all. Our letting agent, Diana has been fantastic and very helpful throughout the whole process. I would highly recommend both Vita properties and Diana."

---



"I used Vita properties to find a flat recently and it was an overall professional, personalised and positive experience. Saira went the extra mile to accommodate to our needs and quick to help us whenever possible."

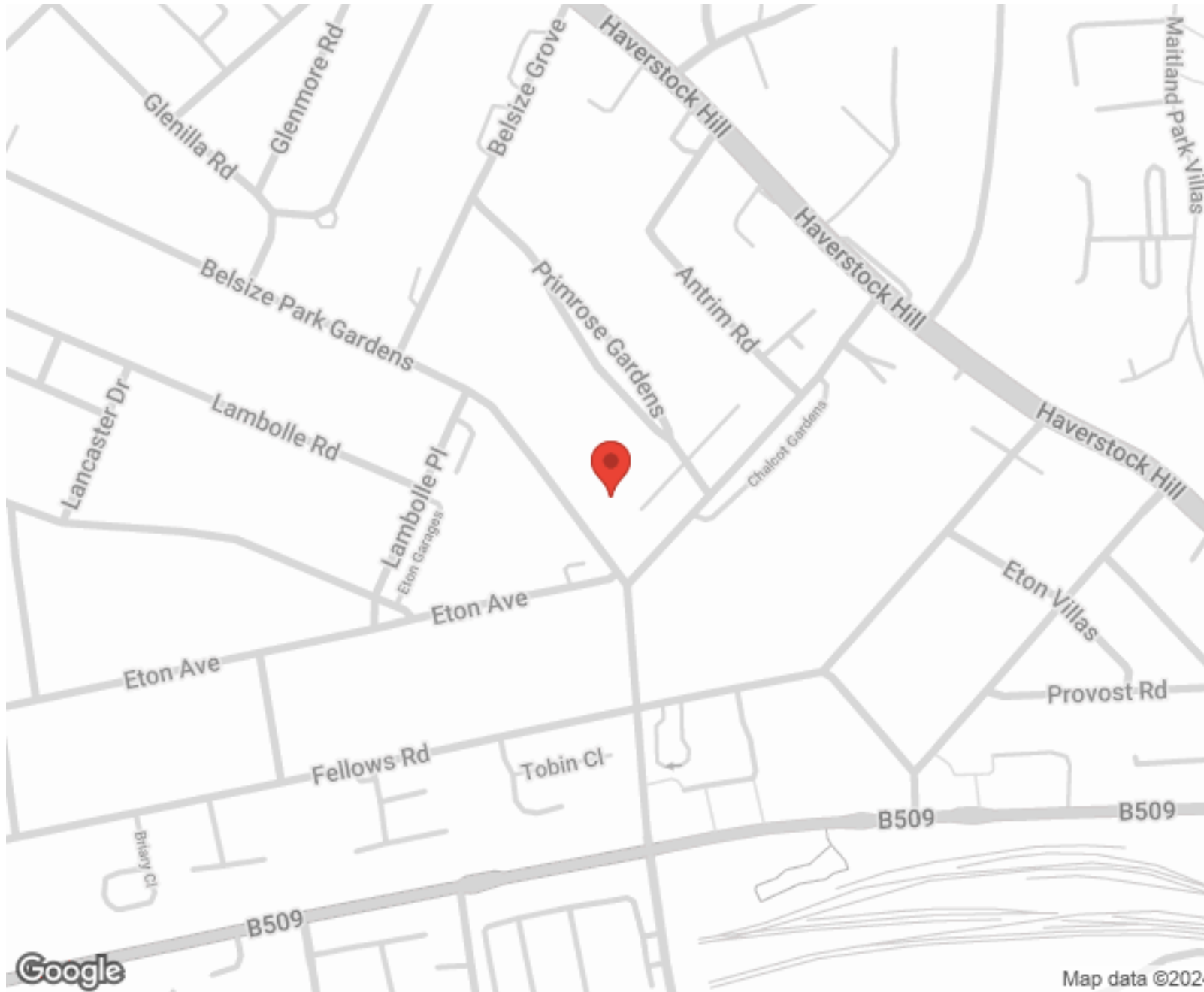
---



**MORE INFO, PICTURES,  
CONTACT ON  
OUR WEBSITE**



"Vita Properties is a very professional agency. My experience with them was incredible and the entire team was very helpful and kind throughout the renting process. I'd highly recommend!"



Score	Energy rating	Current	Potential
92+	A		
81-91	B		
69-80	C		
55-68	D	64 D	77 C
39-54	E		
21-38	F		
1-20	G		

SCAN FOR MORE  
GOOGLE REVIEWS






Google

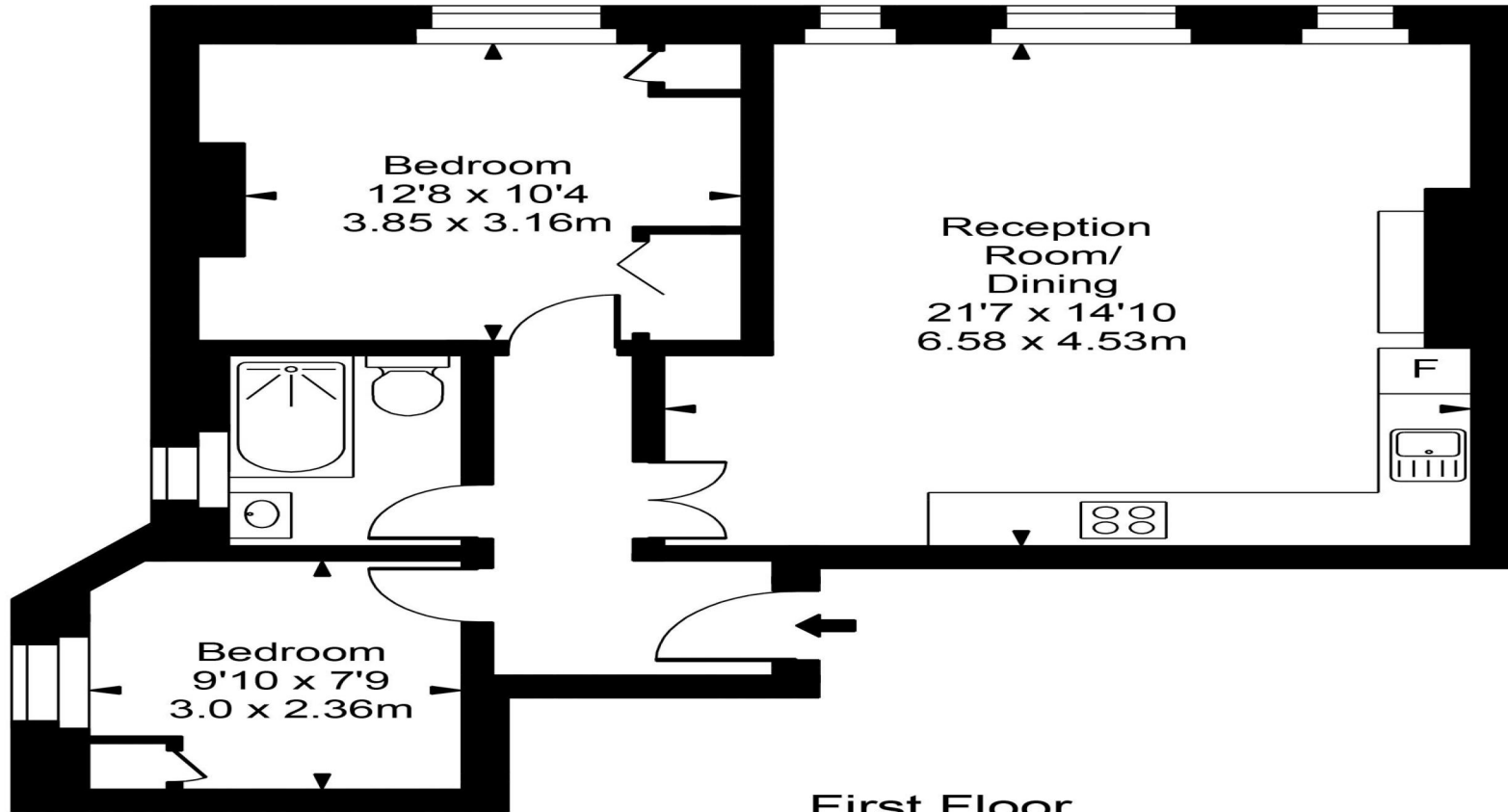
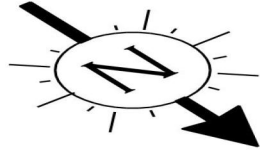


4.9 Stars | 132 Reviews

Find us on social media

-  vitaproperties
-  VitaProperties
-  VitaProperties

# Belsize Park Garden



First Floor

Approx Gross Internal Area **693 Sq Ft - 64.41 Sq M**

For Illustration Purposes Only - Not To Scale  
Floor plan by [www.bestangle.co.uk](http://www.bestangle.co.uk)