



Westfield, Kidderpore Avenue, Hampstead, London NW3 .| £1,153

- Two secure parking spaces
- Access to Two Private Terraces
- Portered
- Gym & Swimming Pool Facility

- Under Floor Heating Throughout
- Air conditioning

"Vita Properties have been tremendously helpful throughout the process of securing/renting my flat. Informative about the property, prompt communication, easy to use dashboard for sharing of information, and pleasant to work with. Highly recommend!"

Luxurious 3-Bedroom Ground Floor Flat with Private Patio - Prime Location!

luxury living in this immaculately refurbished three-bedroom, two-bathroom flat nestled on the ground floor of an upscale apartment complex. Boasting contemporary upgrades and meticulous attention to detail, this residence promises a sophisticated lifestyle.

Step into a welcoming open-plan kitchen and reception moving on to double doors seamlessly connect this inviting space to your own private terrace, offering serene views of the meticulously manicured communal gardens.

This stylish flat features three generously sized double bedrooms, each exuding comfort and elegance. The master bedroom is a haven of relaxation with its en-suite bathroom and convenient built-in wardrobes, providing ample storage space, air conditioning and a second large private outdoor space.

Practicality meets luxury with a utility cupboard housing separate washer and dryer units, ensuring convenience and efficiency in your daily routines.

Additionally, the inclusion of air conditioning ensures year-round comfort, under floor heating throughout, alarm system and two secure underground parking spaces offering total convenience for residents.

Situated in a sought-after location, this residence epitomizes modern urban living at its finest, the residents at Westfield benefit from a dedicated 24-hour concierge, indoor swimming pool, gymnasium, secure designated underground parking space and use of extensive, well-manicured communal gardens.

🏠 Flat
🔑 Available to Let
🛏️ x 3
🚿 x 1
🚗 x 2

SCAN FOR A VIDEO WALKTHROUGH

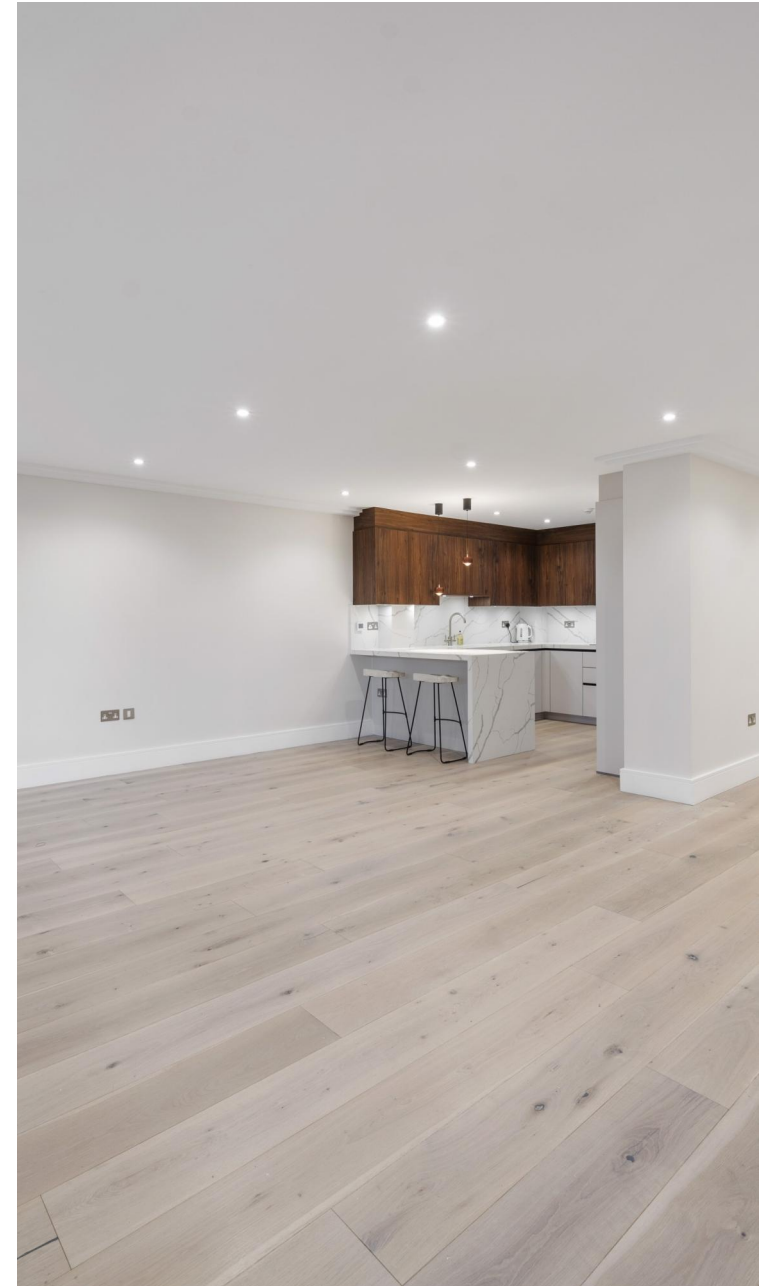


Oliver Kent

✉️ oliver.kent@vitaproperties.uk
☎️ +4477 7274 0351



"I was very impressed with Vita and their network of buyers. When the sale of my flat fell through (twice) they worked extremely hard to find new buyers in a difficult market - thank you!"



"Working with Vita properties has been a smooth experience! No complaints at all. Our letting agent, Diana has been fantastic and very helpful throughout the whole process. I would highly recommend both Vita properties and Diana."



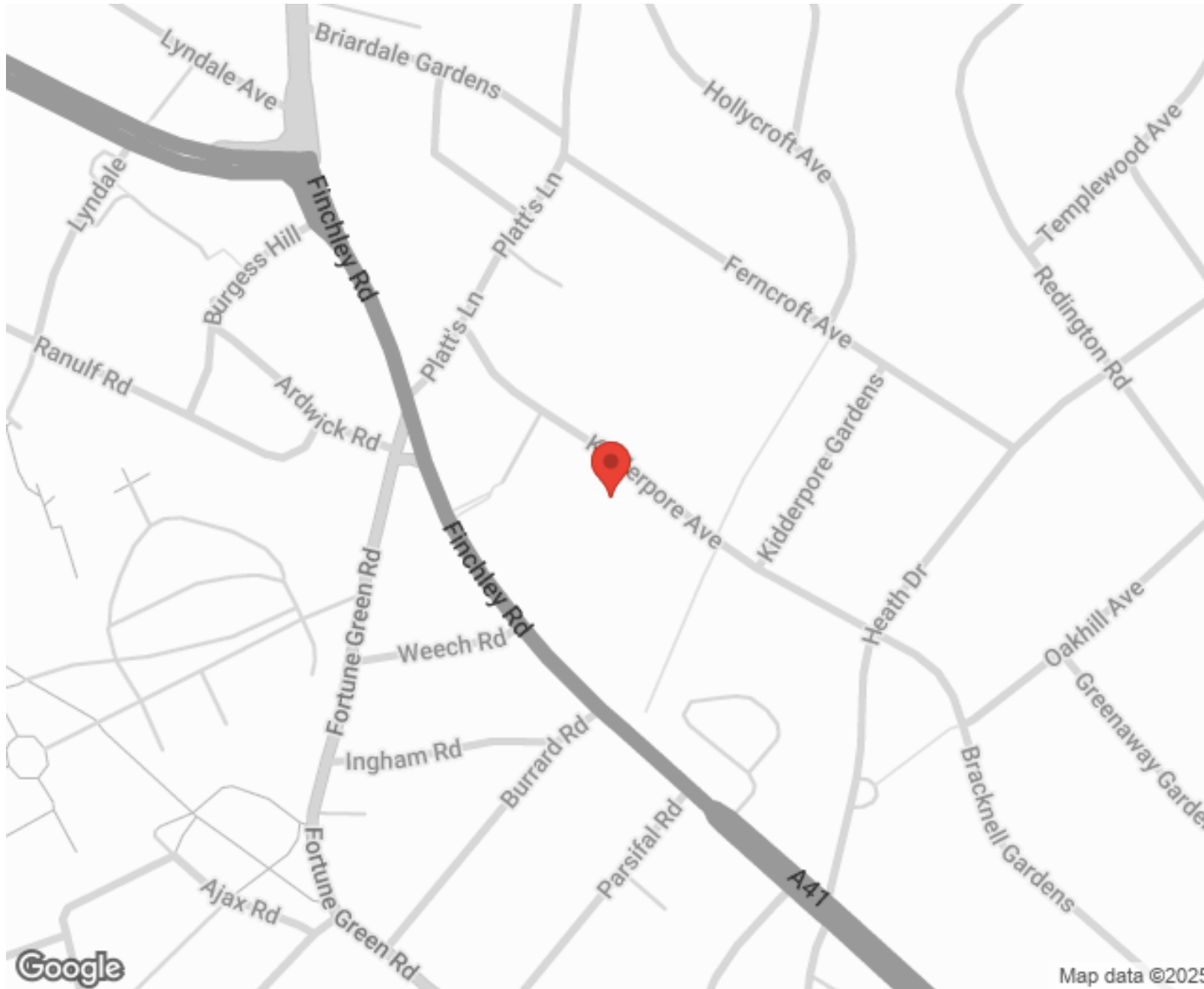
"I used Vita properties to find a flat recently and it was an overall professional, personalised and positive experience. Saira went the extra mile to accommodate to our needs and quick to help us whenever possible."



**MORE INFO, PICTURES,
CONTACT ON
OUR WEBSITE**



"Vita Properties is a very professional agency. My experience with them was incredible and the entire team was very helpful and kind throughout the renting process. I'd highly recommend!"



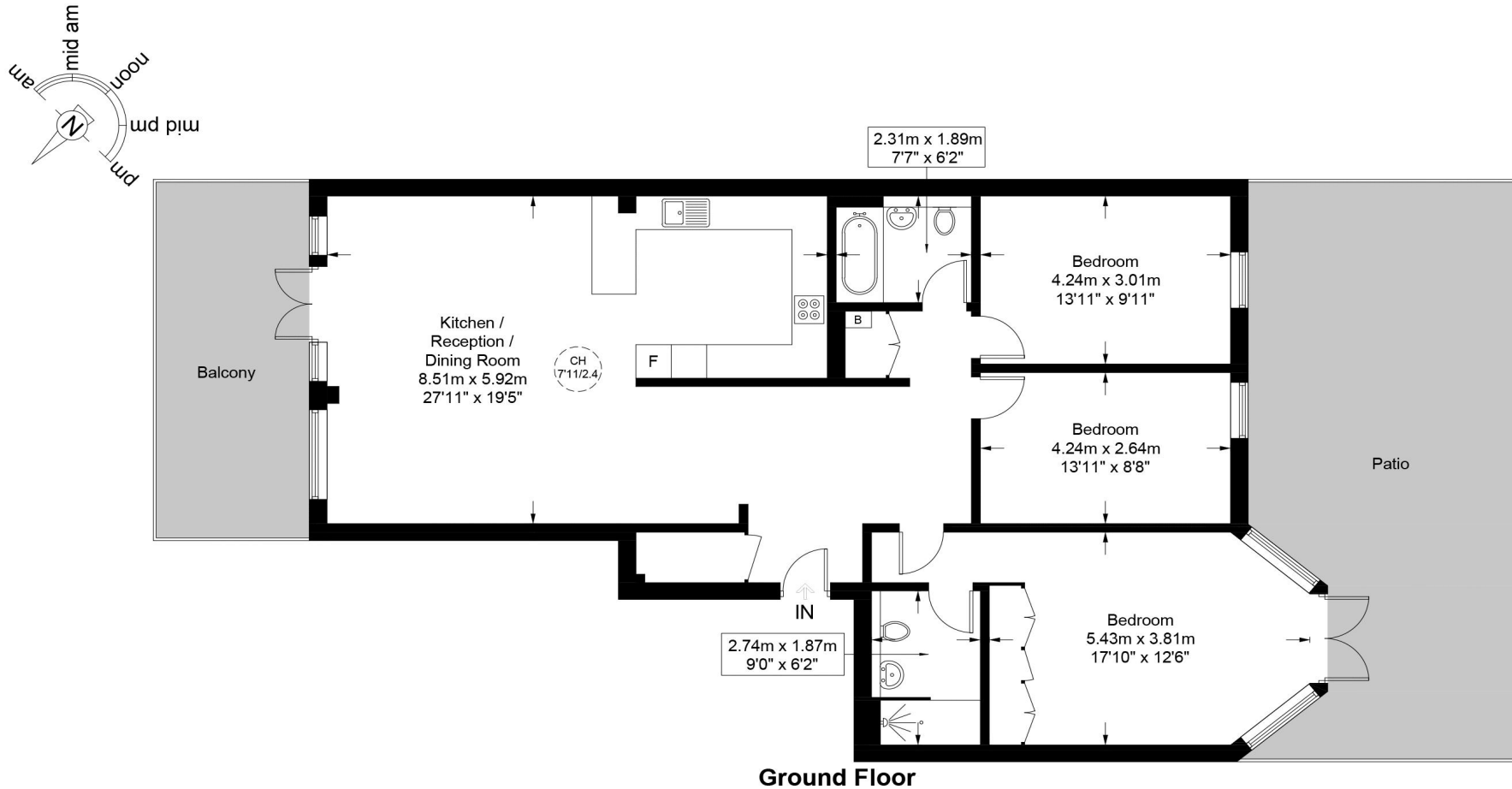
Score	Energy rating	Current	Potential
92+	A		
81-91	B		
69-80	C	76 C	77 C
55-68	D		
39-54	E		
21-38	F		
1-20	G		

SCAN FOR MORE GOOGLE REVIEWS

Google
★★★★★
4.9 Stars | 132 Reviews

Find us on social media

- vitaproperties
- VitaProperties
- VitaProperties



This plan is for layout guidance only and is not drawn to scale unless stated. All dimensions, including windows, doors, and the Total Gross Internal Area (GIA), are approximate. For precise measurements, please consult a qualified architect or surveyor before making any decisions based on this plan.



Certified
Property
Measurer