



Belsize Park Gardens, Belsize Park, London, NW3 .| £875

- Available immediately
- Newly decorated
- Bright and spacious
- Moments from tube and shops

- Three bedrooms - Two bathrooms
- Managed

"Vita Properties have been tremendously helpful throughout the process of securing/renting my flat. Informative about the property, prompt communication, easy to use dashboard for sharing of information, and pleasant to work with. Highly recommend!"

Available immediately - We have pleasure in offering this modern, spacious and extremely well located 3 bedroom apartment situated on the second floor of a well maintained stucco fronted house. This beautiful apartment benefits a large eat-in kitchen, an extremely large reception, a spacious master bedroom with an en-suite bathroom, two further bedrooms and a utility room. The apartment is located moments to amenities of England's Lane, Hampstead and Belsize Park shops and also within walking distance to the respective tube stations.



Oliver Kent

✉ oliver.kent@vitaproperties.uk

☎ +4477 7274 0351



🏠	Flat
🔑	Available to Let
🛏️	x 3
🚿	x 1
🚶	x 2



"I was very impressed with Vita and their network of buyers. When the sale of my flat fell through (twice) they worked extremely hard to find new buyers in a difficult market - thank you!"



"Working with Vita properties has been a smooth experience! No complaints at all. Our letting agent, Diana has been fantastic and very helpful throughout the whole process. I would highly recommend both Vita properties and Diana."



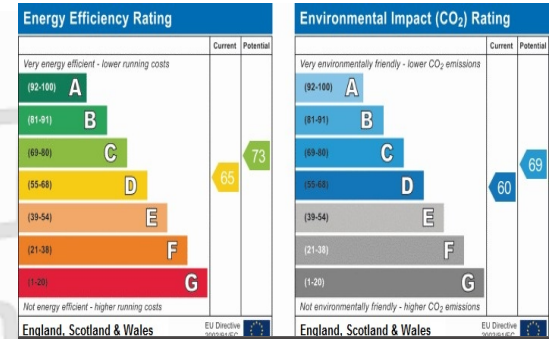
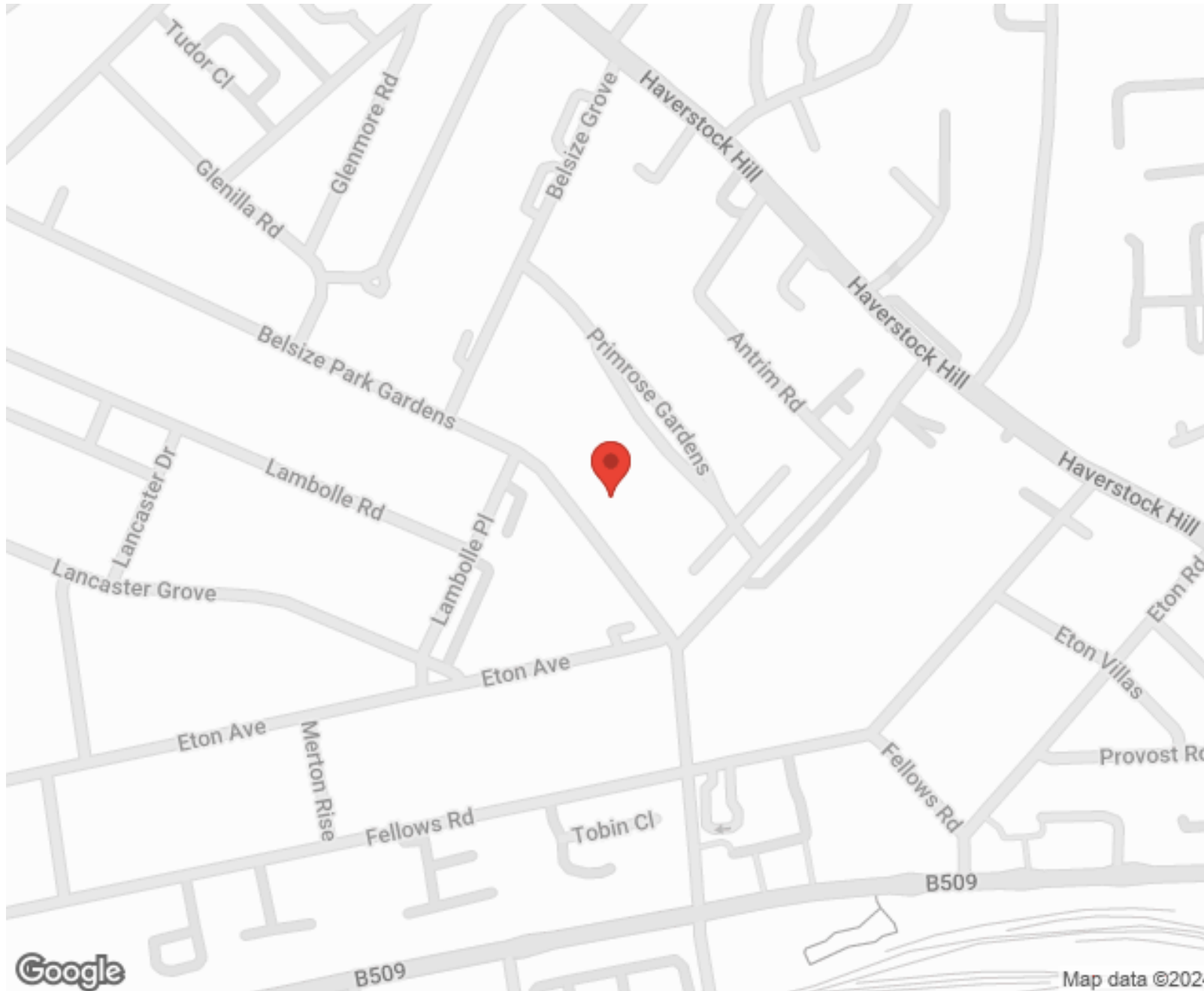
"I used Vita properties to find a flat recently and it was an overall professional, personalised and positive experience. Saira went the extra mile to accommodate to our needs and quick to help us whenever possible."



**MORE INFO, PICTURES,
CONTACT ON
OUR WEBSITE**



"Vita Properties is a very professional agency. My experience with them was incredible and the entire team was very helpful and kind throughout the renting process. I'd highly recommend!"



SCAN FOR MORE
GOOGLE REVIEWS



Google

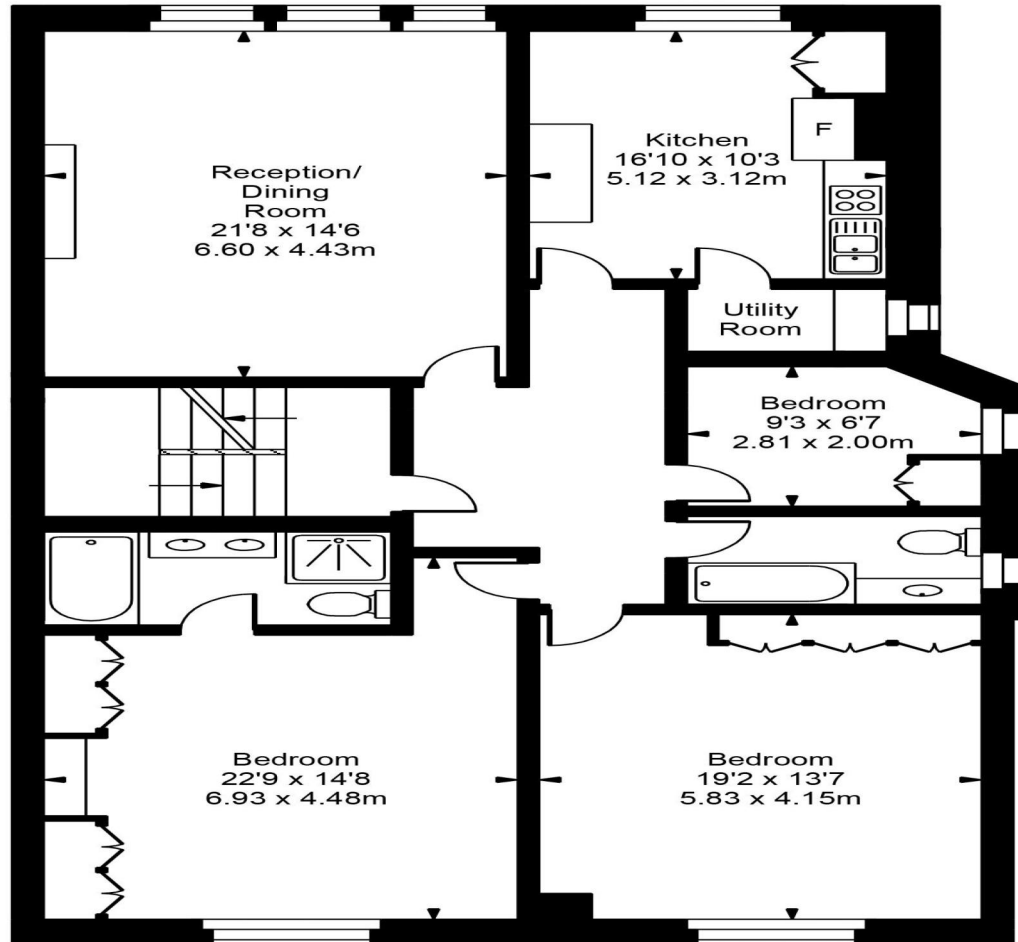
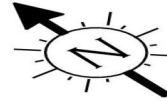


4.9 Stars | 132 Reviews

Find us on social media

-  vitaproperties
-  VitaProperties
-  VitaProperties

Belsize Park Gardens



First Floor



Approx Gross Internal Area **1582 Sq Ft - 146.97 Sq M**

For Illustration Purposes Only - Not To Scale
Floor plan by www.bestangle.co.uk