



Aberdare Gardens, South Hampstead, London, NW6 .| £750

- 3 Double Bedrooms
- Brand Newly Refurbished
- Sough After Location
- Managed

- 2 Bathrooms

"Vita Properties have been tremendously helpful throughout the process of securing/renting my flat. Informative about the property, prompt communication, easy to use dashboard for sharing of information, and pleasant to work with. Highly recommend!"

Available immediately - We are delighted to offer this three double bedroom two bathroom apartment located in one of the most desirable roads in South Hampstead. This extremely large property comprises of three double bedroom, two bathrooms, separate fully fitted kitchen and huge south facing private garden.

Aberdare Gardens is within moments of Finchley Road & West Hampstead Tubes, buses and restaurants



Oliver Kent

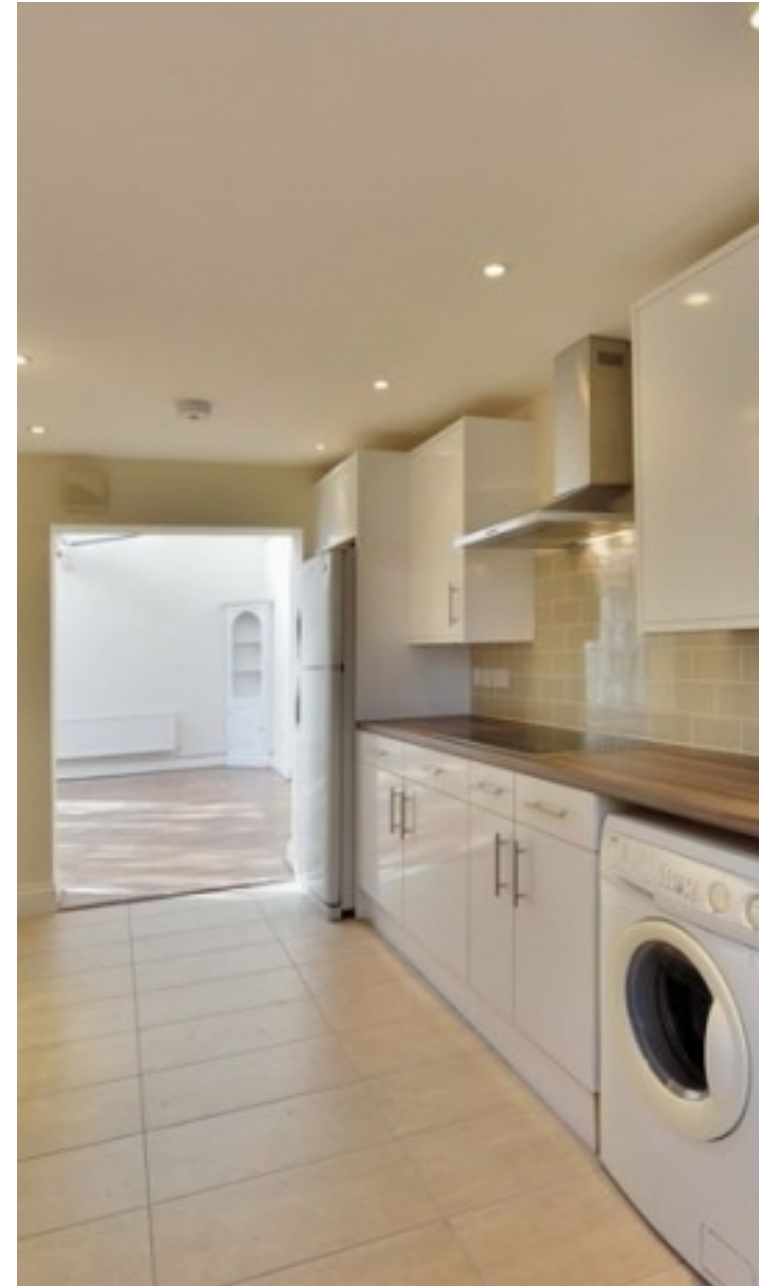
 oliver.kent@vitaproperties.uk
 +4477 7274 0351



 Flat
 Available
to Let
 x 3
 x 1
 x 2



"I was very impressed with Vita and their network of buyers. When the sale of my flat fell through (twice) they worked extremely hard to find new buyers in a difficult market - thank you!"



"Working with Vita properties has been a smooth experience! No complaints at all. Our letting agent, Diana has been fantastic and very helpful throughout the whole process. I would highly recommend both Vita properties and Diana."



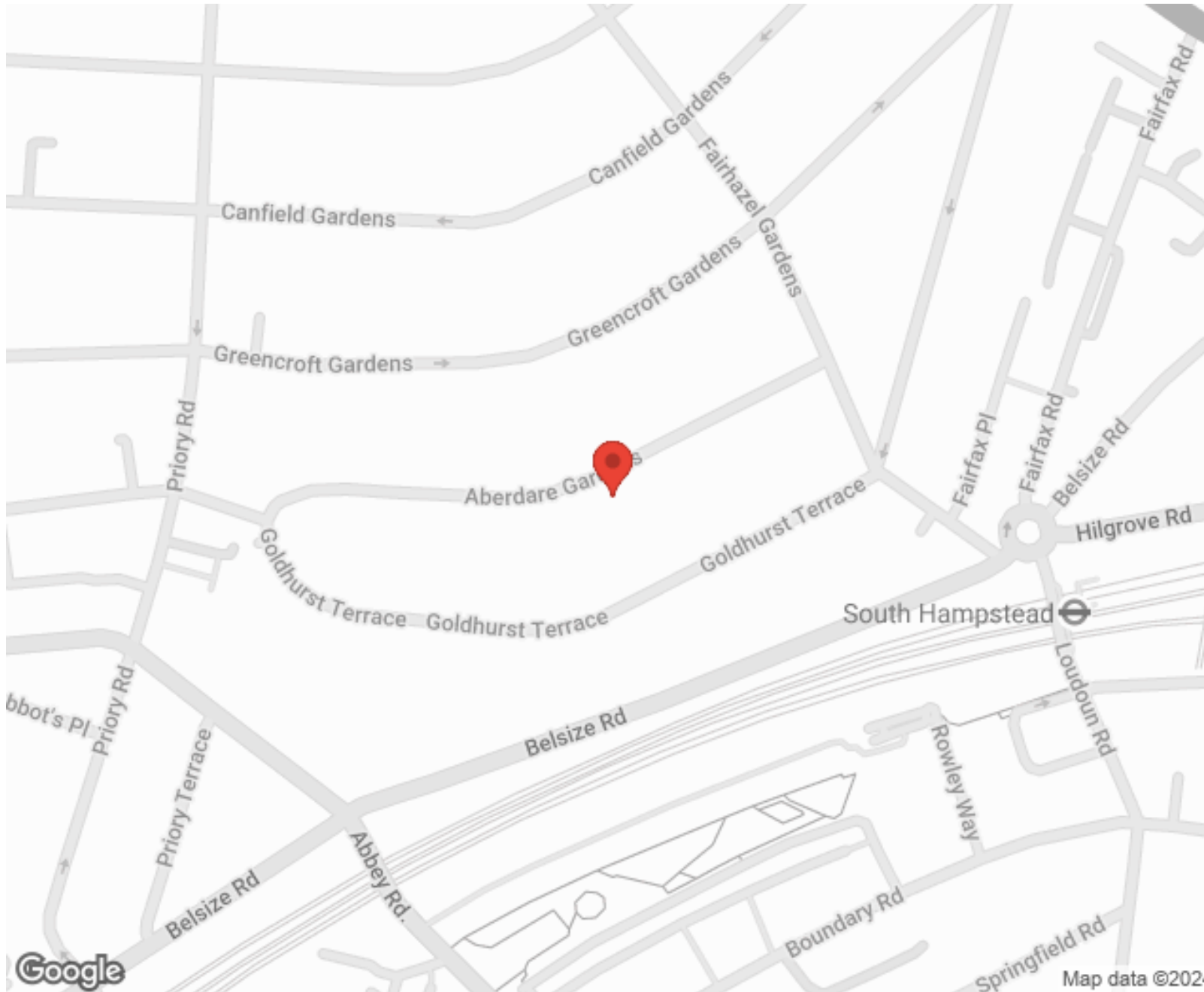
"I used Vita properties to find a flat recently and it was an overall professional, personalised and positive experience. Saira went the extra mile to accommodate to our needs and quick to help us whenever possible."



**MORE INFO, PICTURES,
CONTACT ON
OUR WEBSITE**



"Vita Properties is a very professional agency. My experience with them was incredible and the entire team was very helpful and kind throughout the renting process. I'd highly recommend!"



SCAN FOR MORE
GOOGLE REVIEWS



Google



4.9 Stars | 132 Reviews

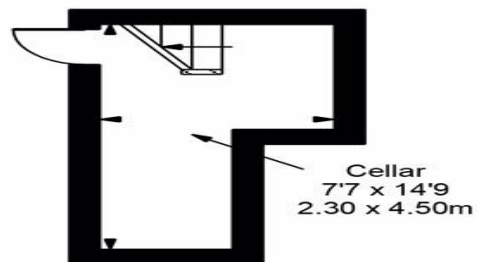
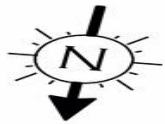
Find us on social media

 vitaproperties

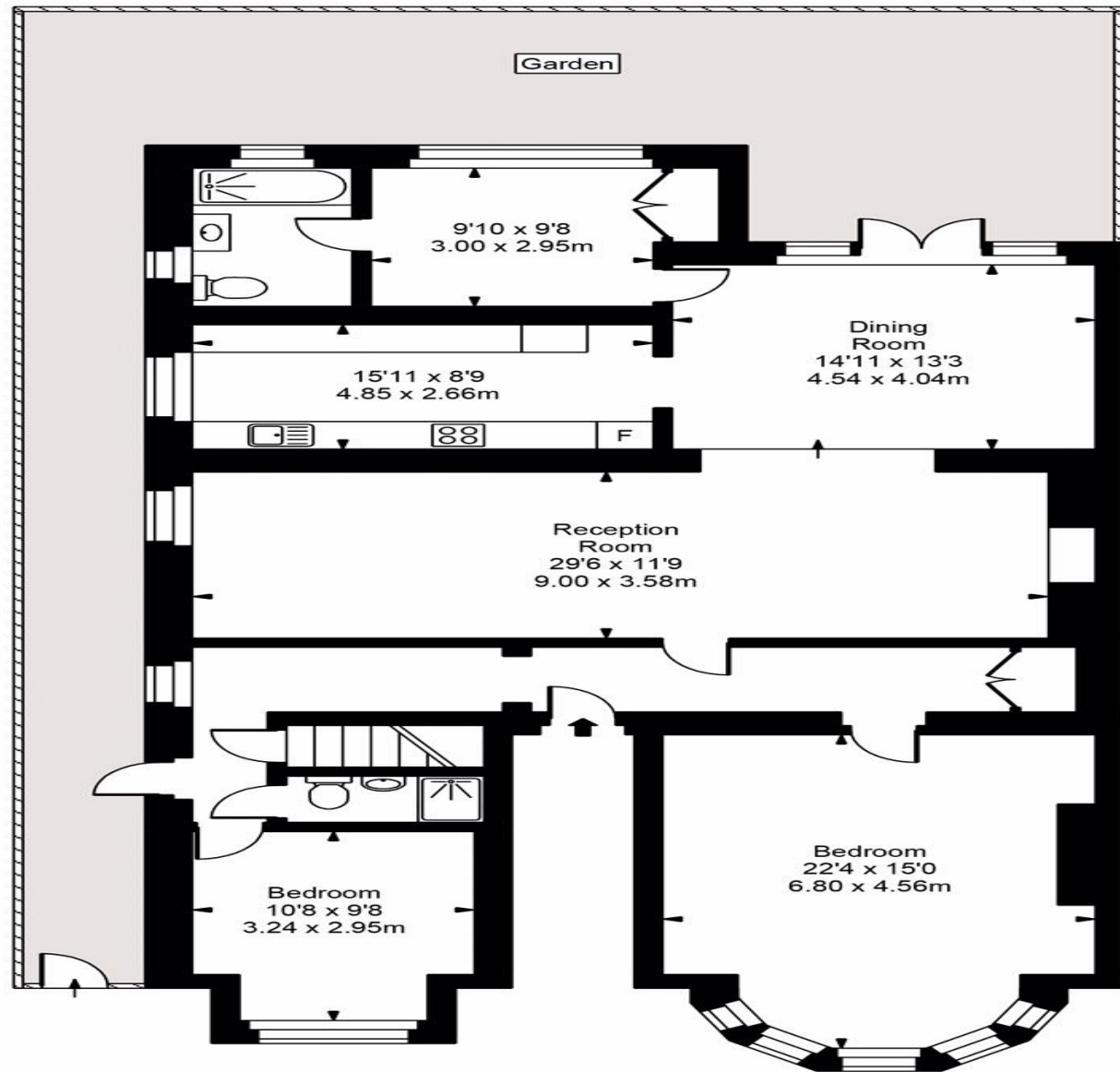
 VitaProperties

 VitaProperties

Aberdare Gardens



Cellar



Ground Floor



Approx Gross Internal Area 1723 Sq Ft - 160.07 Sq M

For Illustration Purposes Only - Not To Scale
Floor plan by www.bestangle.co.uk