



Flask Walk, Hampstead, London, NW3 .| £475

- Offering an abundance of natural light
- Located within a stones throw of Hampstead Village
- Own Entrance
- Wooden floors throughout

- Offered furnished
- Managed

"Vita Properties have been tremendously helpful throughout the process of securing/renting my flat. Informative about the property, prompt communication, easy to use dashboard for sharing of information, and pleasant to work with. Highly recommend!"

Available 24th April is this stunning one bed apartment set within a beautiful modern purpose built 1970s block consisting of three flats and one house and situated in the heart of Hampstead Village. Located within moment to all the shops, amenities and Hampstead tube station. The property benefits from its own entrance, wooden floors through-out, a well laid out reception with a semi open plan fitted kitchen, a fully tiled modern bathroom and bedroom with fitted wardrobes. Offered Furnished.



Oliver Kent

✉ oliver.kent@vitaproperties.uk

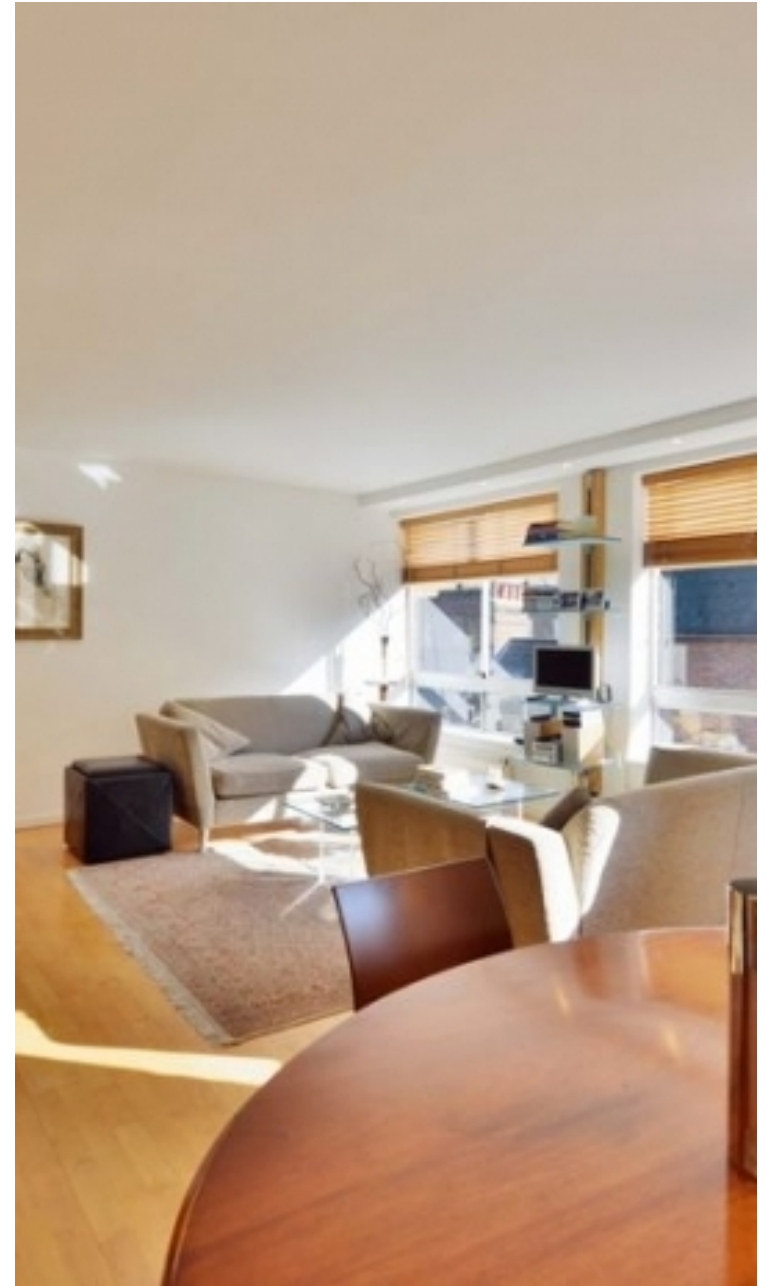
☎ +4477 7274 0351



🏠 Flat
🔑 Available
to Let
🛏 x 1
🚿 x 1
🚶 x 1



"I was very impressed with Vita and their network of buyers. When the sale of my flat fell through (twice) they worked extremely hard to find new buyers in a difficult market - thank you!"



"Working with Vita properties has been a smooth experience! No complaints at all. Our letting agent, Diana has been fantastic and very helpful throughout the whole process. I would highly recommend both Vita properties and Diana."



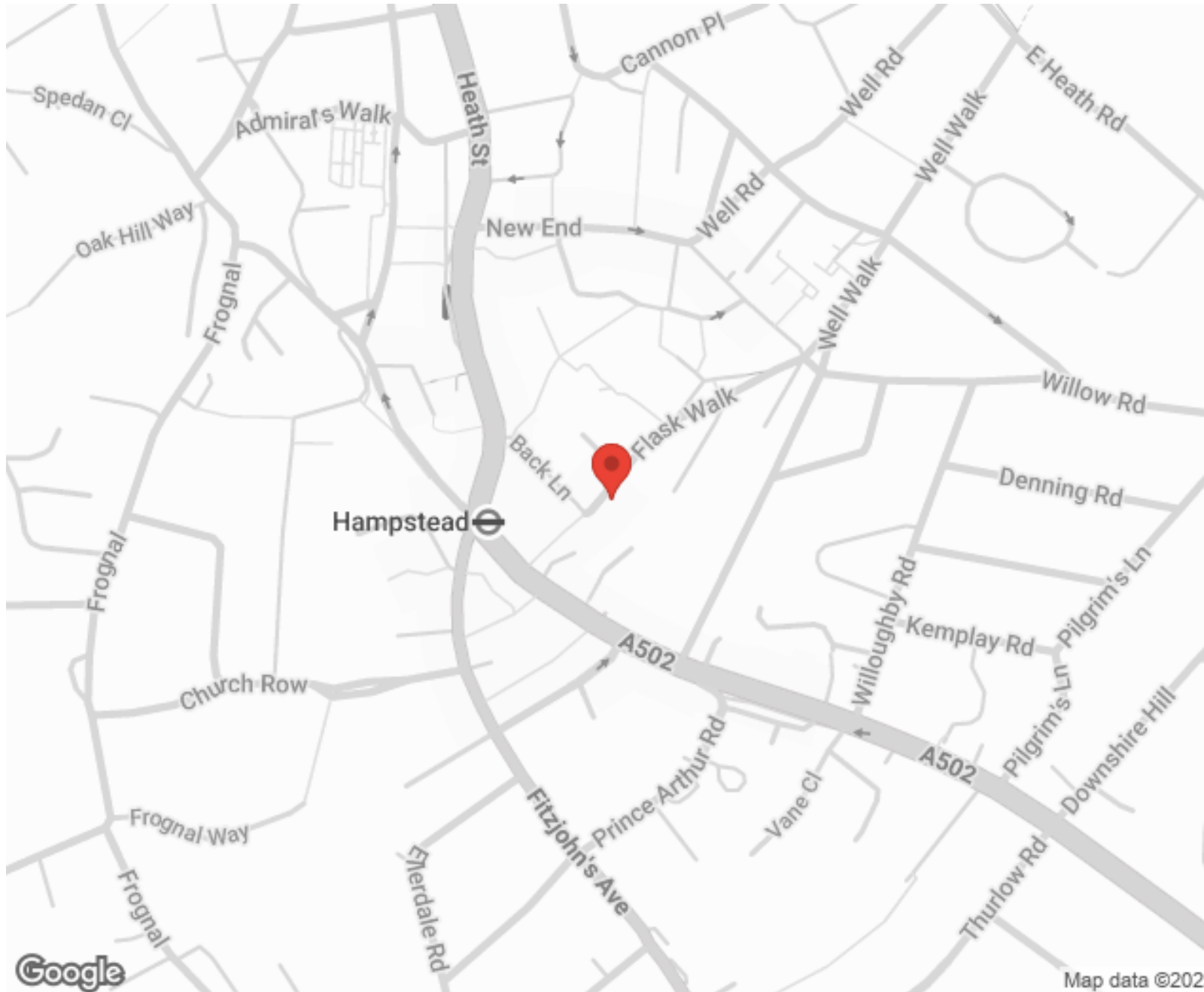
"I used Vita properties to find a flat recently and it was an overall professional, personalised and positive experience. Saira went the extra mile to accommodate to our needs and quick to help us whenever possible."



MORE INFO, PICTURES,
CONTACT ON
OUR WEBSITE



"Vita Properties is a very professional agency. My experience with them was incredible and the entire team was very helpful and kind throughout the renting process. I'd highly recommend!"



SCAN FOR MORE
GOOGLE REVIEWS



Google

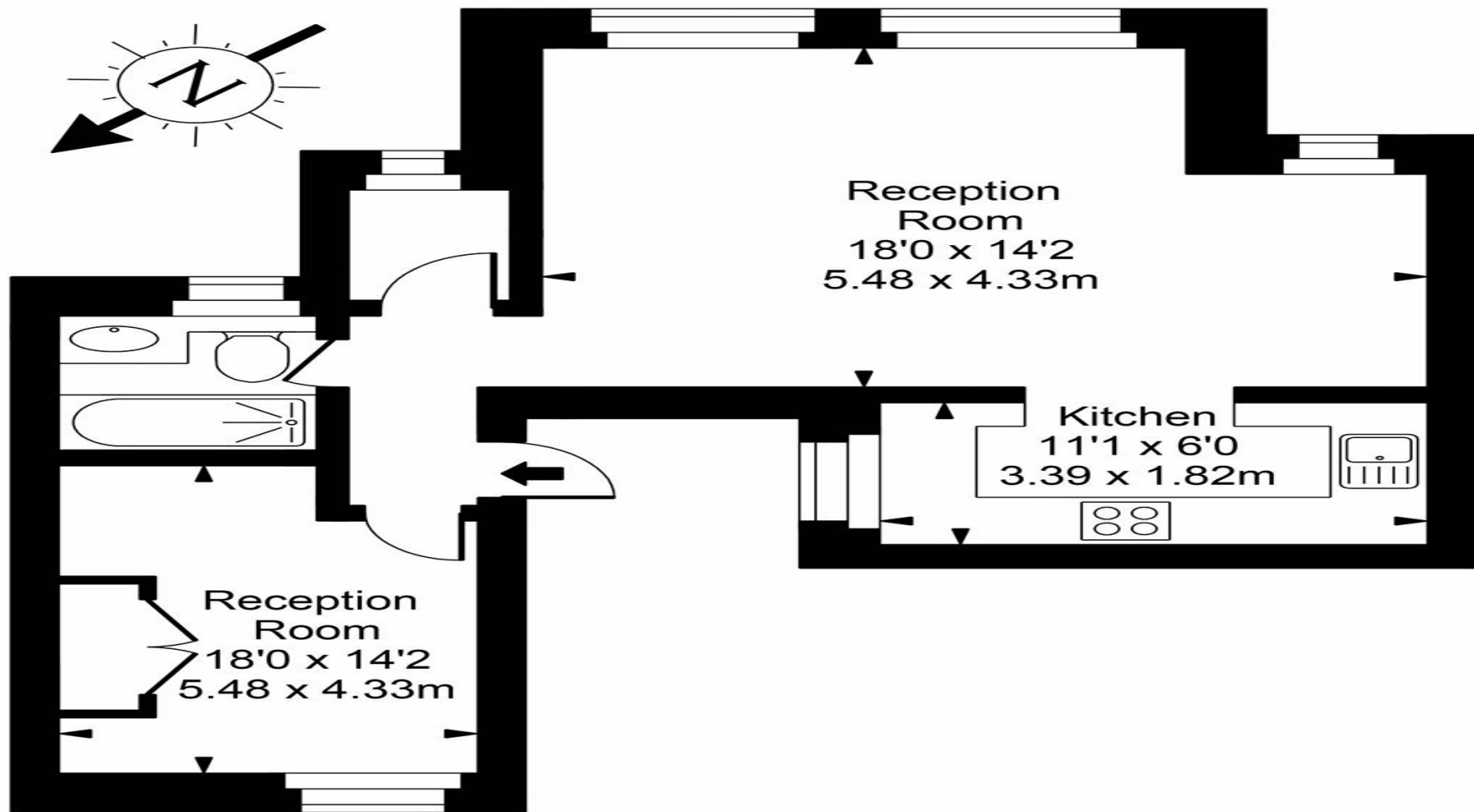


4.9 Stars | 132 Reviews

Find us on social media



Flask Walk



First Floor



Approx Gross Internal Area **489 Sq Ft - 45.41 Sq M**

For Illustration Purposes Only - Not To Scale
Floor plan by www.bestangle.co.uk