



Avenue Close, Avenue Road, St Johns Wood, London, NW8 .| £1,300

- Porter
- Lift
- Double aspect reception
- Three double bedrooms

- Large fitted kitchen
- Guest WC
- Available 10th July

"Vita Properties have been tremendously helpful throughout the process of securing/renting my flat. Informative about the property, prompt communication, easy to use dashboard for sharing of information, and pleasant to work with. Highly recommend!"

Available immediately - A superb three bedroom apartment (approximately 1620 sq ft) in excellent decorative order situated in this prestigious purpose built block benefiting from off-street parking for two cars (first come, first served), uniformed portering and well maintained communal gardens. This third floor apartment boasts a 31ft reception room and a modern, eat-in kitchen. Situated just off Avenue Road, St Johns Wood's premier road, the property is within a short walk of the boutiques and restaurants of St Johns Wood High Street/Underground Station as well as both Regents Park and Primrose Hill Park. Communal hot water and heating.



Saira Ishfaq

✉ saira@vitaproperties.uk

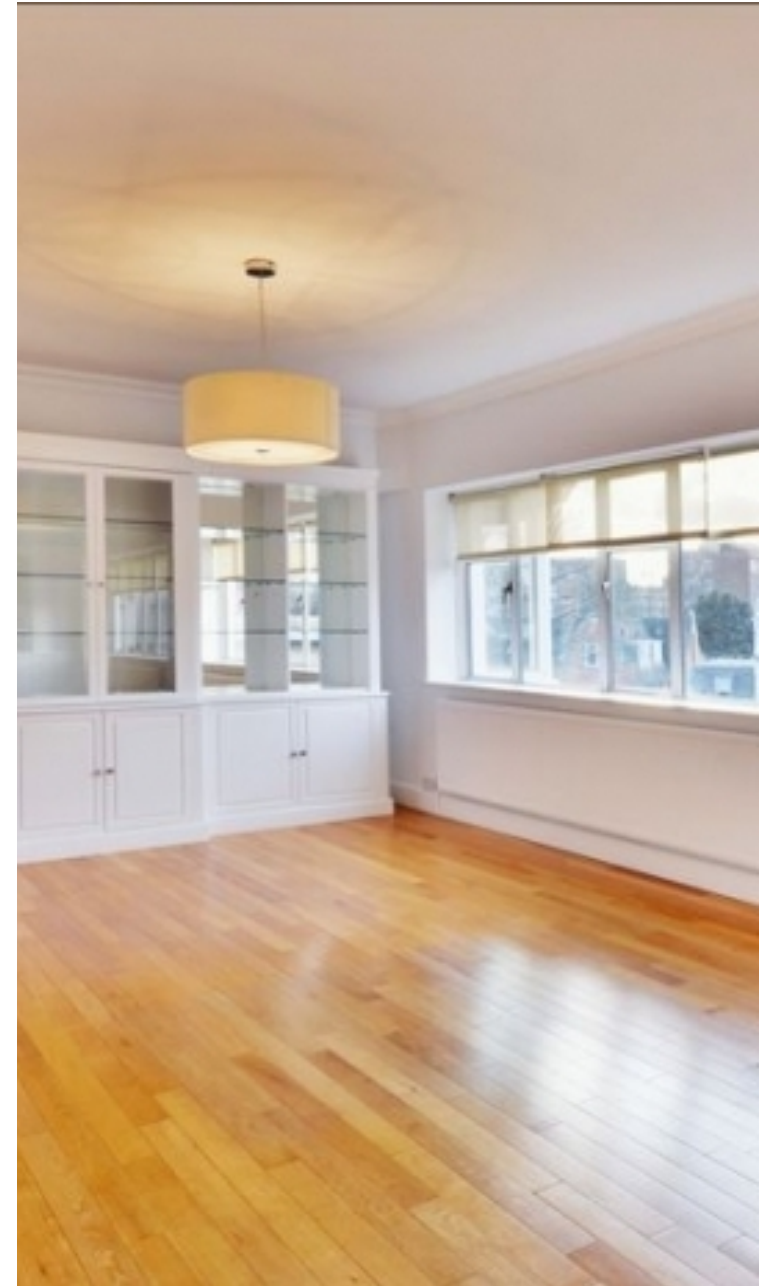
☎ +4475 5575 4510



🏠	Flat
🔑	Available to Let
🛏	x 3
🛋	x 1
🚿	x 2



"I was very impressed with Vita and their network of buyers. When the sale of my flat fell through (twice) they worked extremely hard to find new buyers in a difficult market - thank you!"



"Working with Vita properties has been a smooth experience! No complaints at all. Our letting agent, Diana has been fantastic and very helpful throughout the whole process. I would highly recommend both Vita properties and Diana."



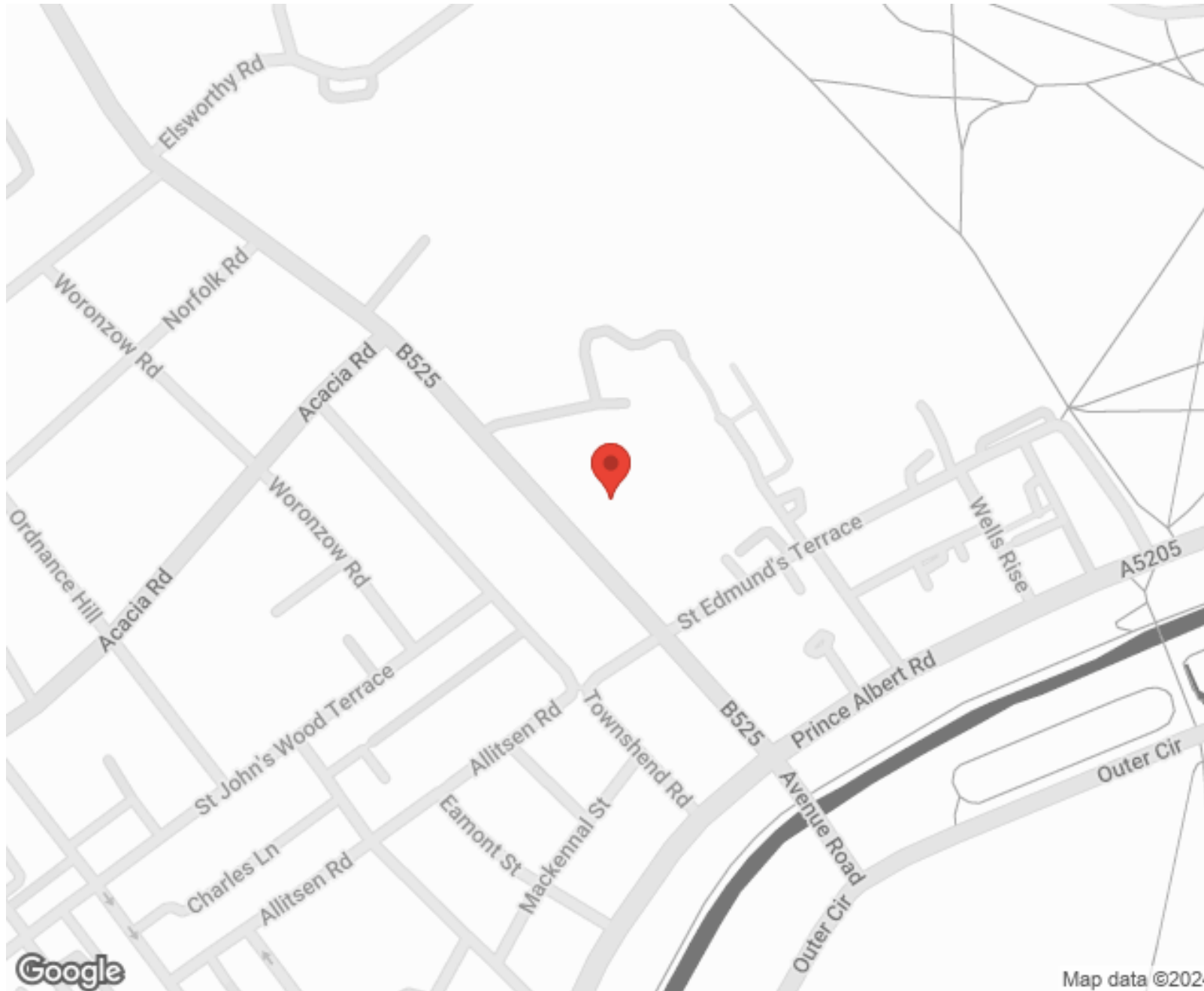
"I used Vita properties to find a flat recently and it was an overall professional, personalised and positive experience. Saira went the extra mile to accommodate to our needs and quick to help us whenever possible."



**MORE INFO, PICTURES,
CONTACT ON
OUR WEBSITE**



"Vita Properties is a very professional agency. My experience with them was incredible and the entire team was very helpful and kind throughout the renting process. I'd highly recommend!"



SCAN FOR MORE
GOOGLE REVIEWS






Google

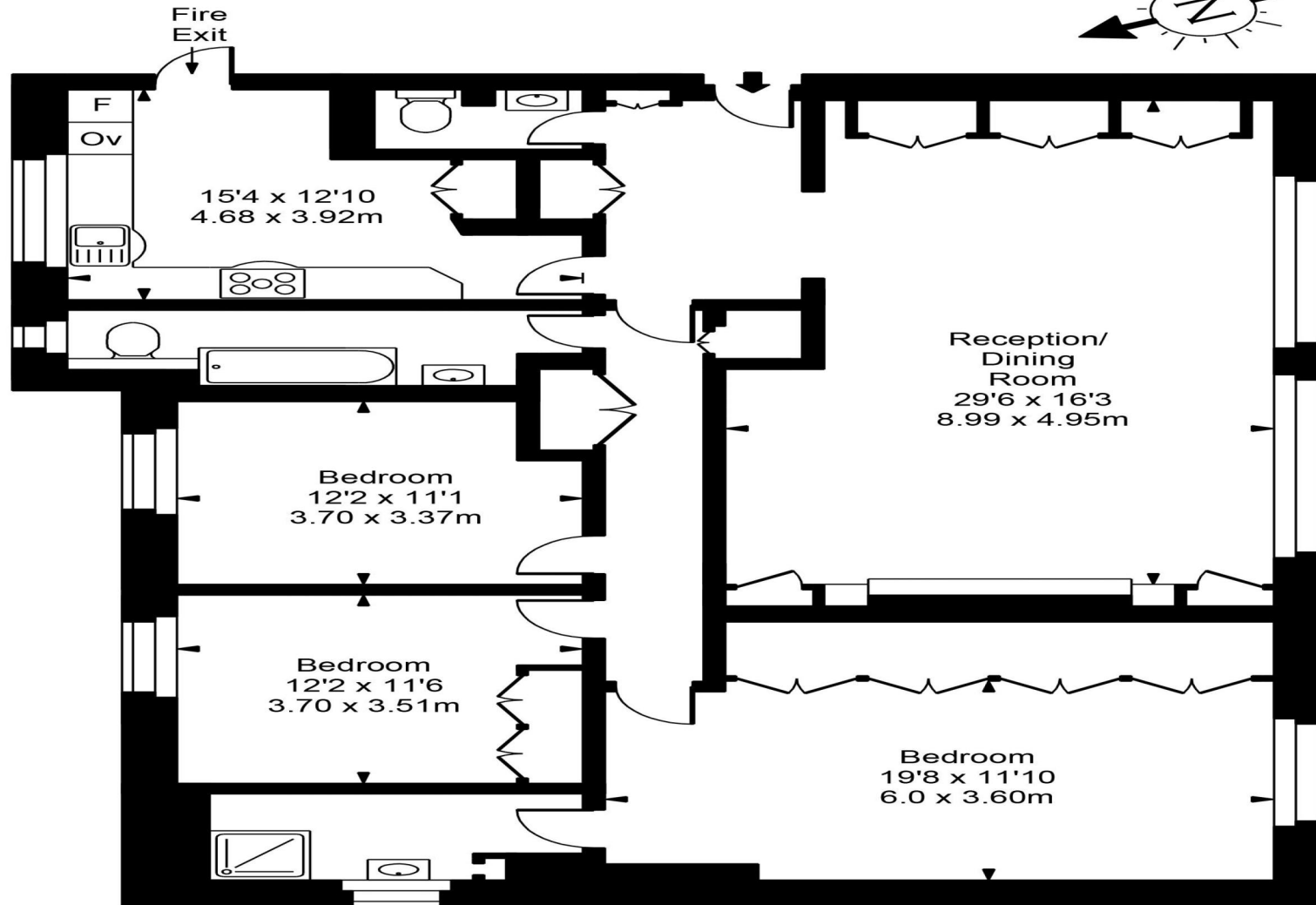


4.9 Stars | 132 Reviews

Find us on social media

-  vitaproperties
-  VitaProperties
-  VitaProperties

Avenue Close



Third Floor



Approx Gross Internal Area **1620 Sq Ft - 152.50 Sq M**

For Illustration Purposes Only - Not To Scale
Floor plan by www.bestangle.co.uk