



Buckland Crescent, Swiss Cottage, London, NW3 .| £875

- Summerhouse/Guestroom/4th Bedroom with Bathroom
- Brand New Eat in Kitchen
- Furnished or Unfurnished
- 2 Bathrooms

- Available 2nd October

"Vita Properties have been tremendously helpful throughout the process of securing/renting my flat. Informative about the property, prompt communication, easy to use dashboard for sharing of information, and pleasant to work with. Highly recommend!"

Vita Properties are delighted to offer this substantial garden apartment benefiting from a private entrance, garden with summerhouse/guest room and conservatory, wooden floors. The property is situated in the heart of Belsize Park within close proximity to the shopping amenities of Belsize Village and walking distance from Swiss Cottage. Accommodation comprises double reception room with dining area, fully fitted kitchen, master bedroom with en-suite bathroom, two further double bedrooms, family bathroom. Furnished/unfurnished. Available 2nd October.



Oliver Kent

✉ oliver.kent@vitaproperties.uk
☎ +4477 7274 0351



🏠	Flat
🔑	Available to Let
🛏️	x 3
🛋️	x 1
🚿	x 2



"I was very impressed with Vita and their network of buyers. When the sale of my flat fell through (twice) they worked extremely hard to find new buyers in a difficult market - thank you!"



"Working with Vita properties has been a smooth experience! No complaints at all. Our letting agent, Diana has been fantastic and very helpful throughout the whole process. I would highly recommend both Vita properties and Diana."



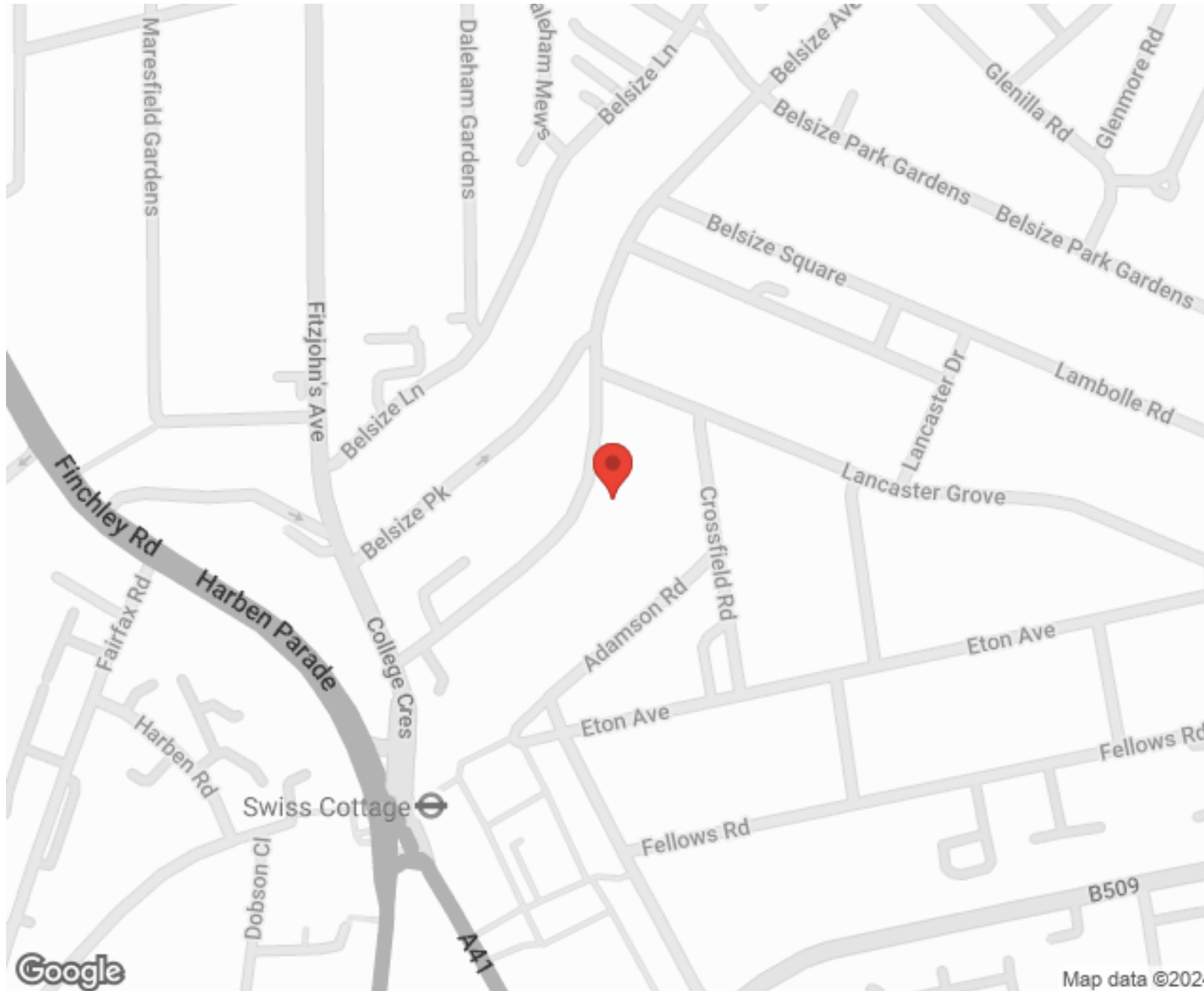
"I used Vita properties to find a flat recently and it was an overall professional, personalised and positive experience. Saira went the extra mile to accommodate to our needs and quick to help us whenever possible."



**MORE INFO, PICTURES,
CONTACT ON
OUR WEBSITE**



"Vita Properties is a very professional agency. My experience with them was incredible and the entire team was very helpful and kind throughout the renting process. I'd highly recommend!"



SCAN FOR MORE
GOOGLE REVIEWS






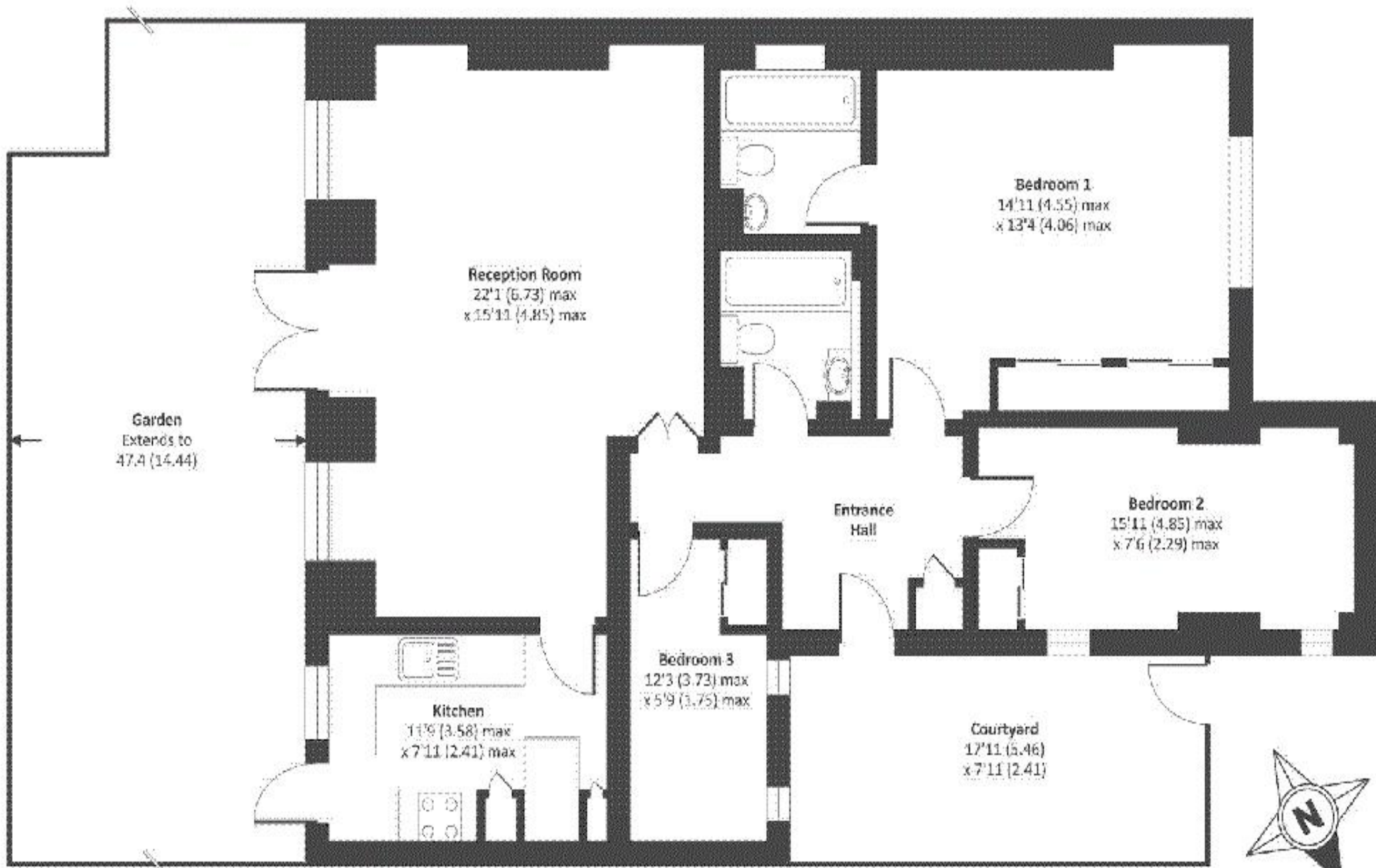
Google



4.9 Stars | 132 Reviews

Find us on social media

-  vitaproperties
-  VitaProperties
-  VitaProperties



Garden
Extends to
47.4 (14.44)

Ground floor

Approx. gross internal floor area 1061 SQFT / 98.6 SQM

