



Ormonde Terrace, St Johns Wood, London, NW8 .| £462

- Portered block
- Views over Primrose Hill
- Moments to Regents Park and Parkway
- Lift

- Heating and Hot water inc

"Vita Properties have been tremendously helpful throughout the process of securing/renting my flat. Informative about the property, prompt communication, easy to use dashboard for sharing of information, and pleasant to work with. Highly recommend!"

A Beautiful, One bedroom V apartment with direct views over Primrose Hill !!!!! Here is a very rare opportunity to rent a large One Bedroom flat on Ormonde Terrace with stunning views over Primrose Hill and the lights of London.

Some of the main benefits to the property are a larger bedroom with built in Wardrobes, separate modern fitted kitchen with dishwasher, a fully tiled and modern bathroom and spacious lounge, all with south facing windows.

The Property covers just over 700 sqft (65 sqmt) in a period mansion block that also benefits from a Porter, internal lift and Heating and Hot water included in the rent.

The property is available now and provided fully furnished, including a T.



Oliver Kent

✉ oliver.kent@vitaproperties.uk

☎ +4477 7274 0351



🏠	Flat
🔑	Under Negotiation
🍽️	x 1
🚿	x 1
🚰	x 1



"I was very impressed with Vita and their network of buyers. When the sale of my flat fell through (twice) they worked extremely hard to find new buyers in a difficult market - thank you!"



"Working with Vita properties has been a smooth experience! No complaints at all. Our letting agent, Diana has been fantastic and very helpful throughout the whole process. I would highly recommend both Vita properties and Diana."



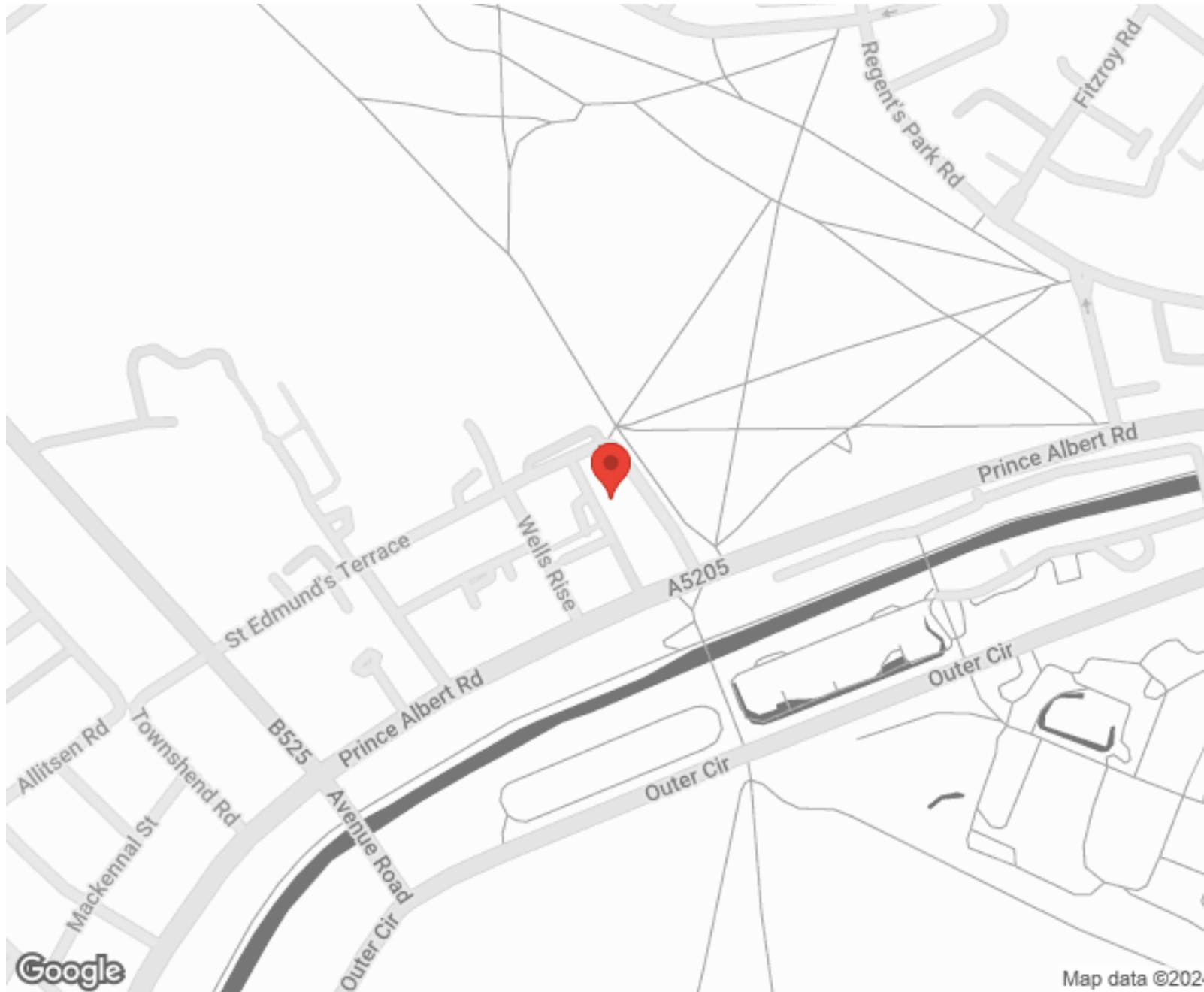
"I used Vita properties to find a flat recently and it was an overall professional, personalised and positive experience. Saira went the extra mile to accommodate to our needs and quick to help us whenever possible."



**MORE INFO, PICTURES,
CONTACT ON
OUR WEBSITE**



"Vita Properties is a very professional agency. My experience with them was incredible and the entire team was very helpful and kind throughout the renting process. I'd highly recommend!"



SCAN FOR MORE
GOOGLE REVIEWS






Google

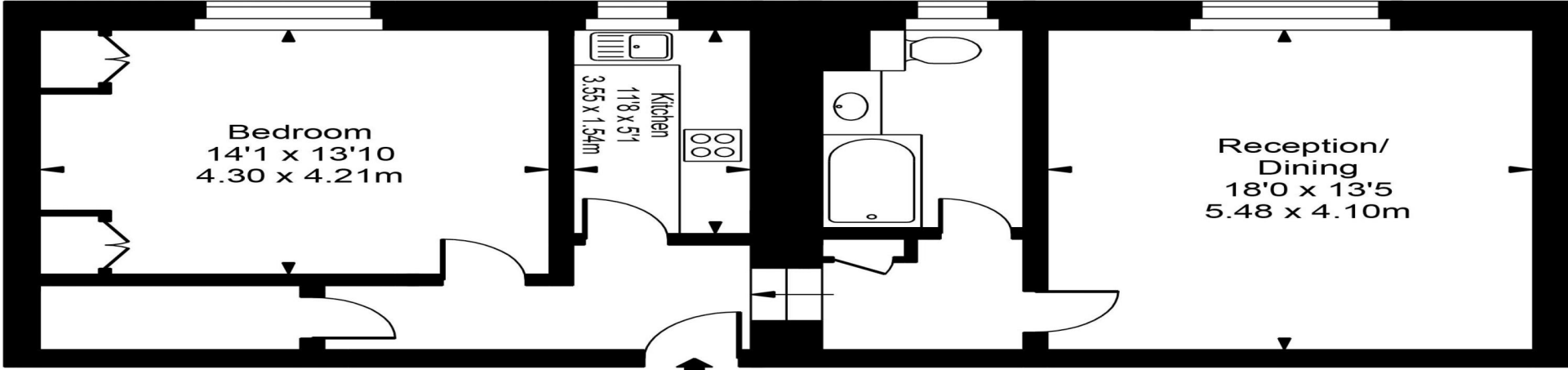
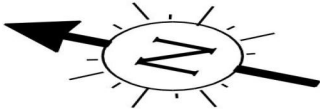


4.9 Stars | 132 Reviews

Find us on social media

-  vitaproperties
-  VitaProperties
-  VitaProperties

Ormond Terrace



Fourth Floor



Approx Gross Internal Area **746 Sq Ft - 69.30 Sq M**

For Illustration Purposes Only - Not To Scale
Floor plan by www.bestangle.co.uk