



Belsize Square, Belsize Park, London, NW3 .| £1,920

- Separate WC
- Large reception room and separate dining room
- Eat-in kitchen
- Managed

"Vita Properties have been tremendously helpful throughout the process of securing/renting my flat. Informative about the property, prompt communication, easy to use dashboard for sharing of information, and pleasant to work with. Highly recommend!"

A truly spectacular four bedroom apartment set upon this prestigious and sought after location in the heart of Belsize Park. Refurbished to an extremely high standard this stunning apartment boasts an incredible reception room with solid wood floors and fireplace and a fully integrated high spec kitchen with island and space for family dining. Further benefits include, large master bedroom with private en suite, family bathroom, two guest WC's and an incredible large private rear garden. Location is superb with Belsize village moments away, as well as many transport links nearby including Swiss Cottage (Jubilee Line) and Belsize park (Northern Line).

🏠 Flat
🔑 Available
to Let
🛏 x 4
🛋 x 2
🚿 x 3

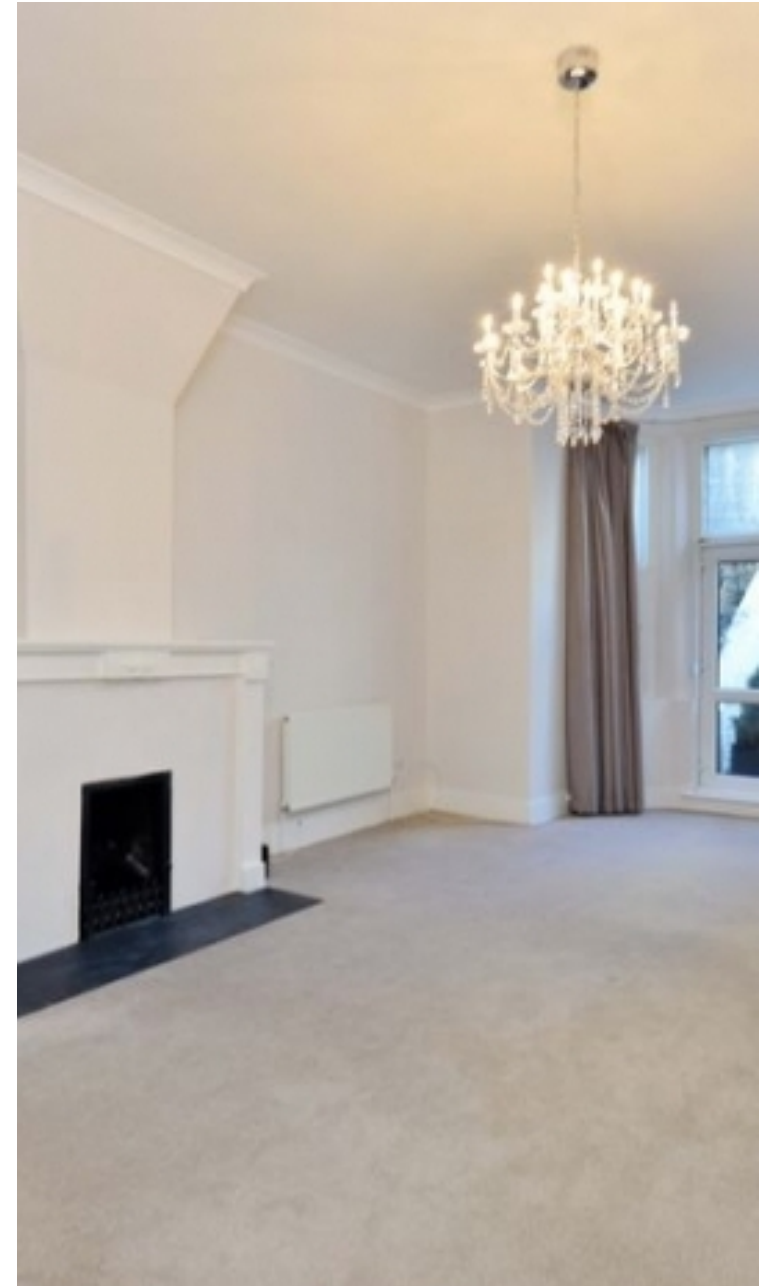


Oliver Kent

✉ oliver.kent@vitaproperties.uk
☎ +4477 7274 0351



"I was very impressed with Vita and their network of buyers. When the sale of my flat fell through (twice) they worked extremely hard to find new buyers in a difficult market - thank you!"



"Working with Vita properties has been a smooth experience! No complaints at all. Our letting agent, Diana has been fantastic and very helpful throughout the whole process. I would highly recommend both Vita properties and Diana."



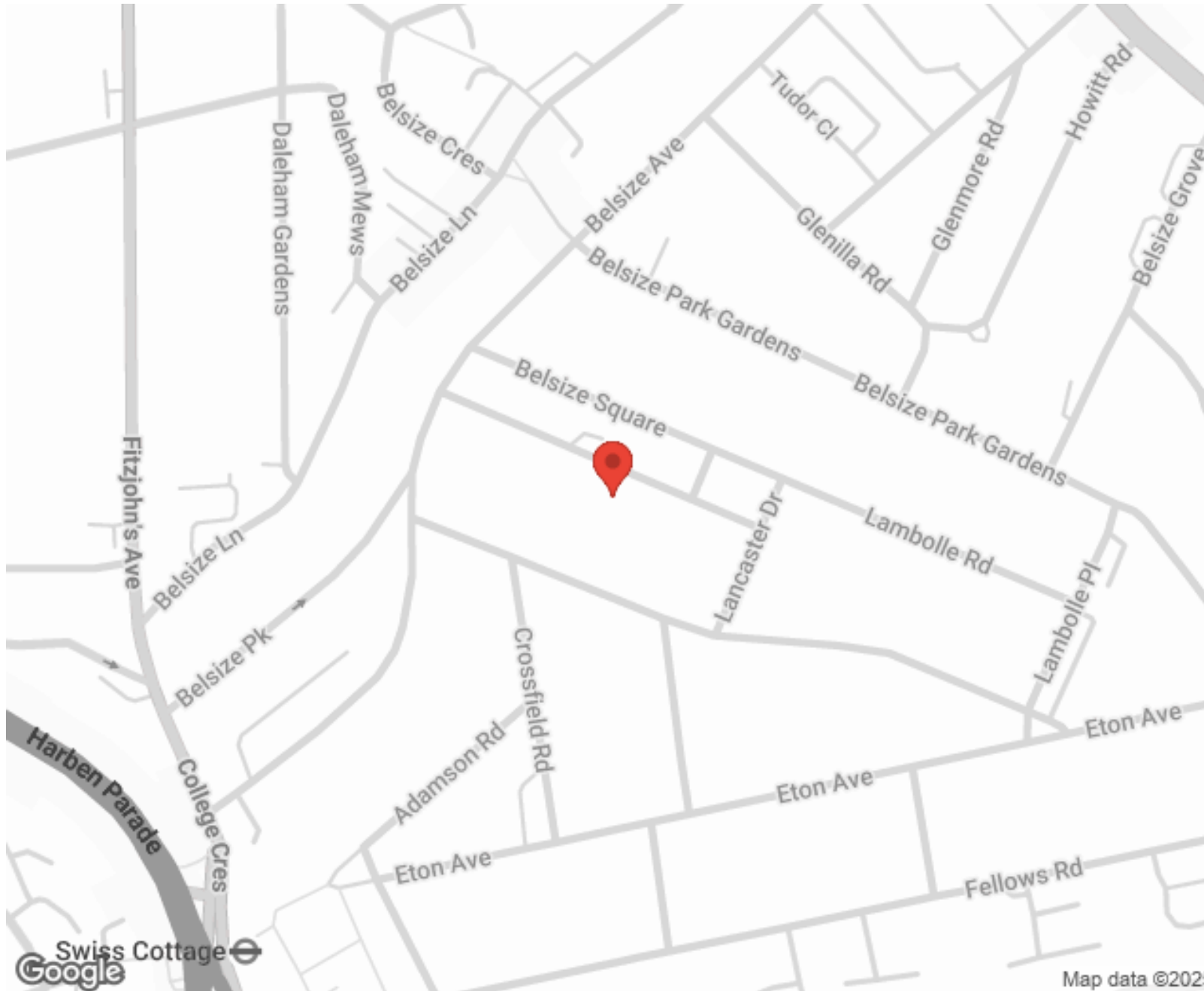
"I used Vita properties to find a flat recently and it was an overall professional, personalised and positive experience. Saira went the extra mile to accommodate to our needs and quick to help us whenever possible."



**MORE INFO, PICTURES,
CONTACT ON
OUR WEBSITE**



"Vita Properties is a very professional agency. My experience with them was incredible and the entire team was very helpful and kind throughout the renting process. I'd highly recommend!"



SCAN FOR MORE
GOOGLE REVIEWS



Google




4.9 Stars | 132 Reviews

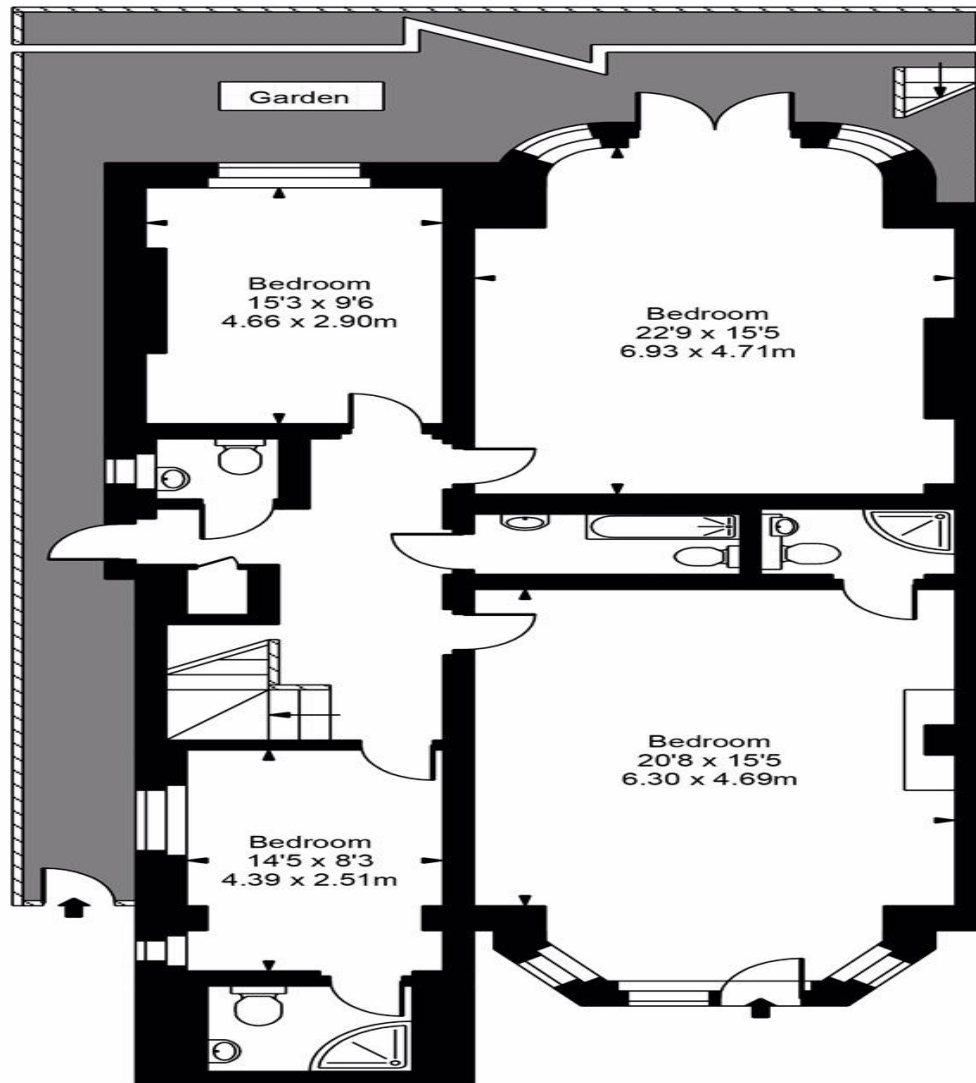
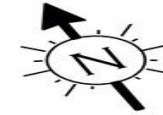
Find us on social media

 vitaproperties

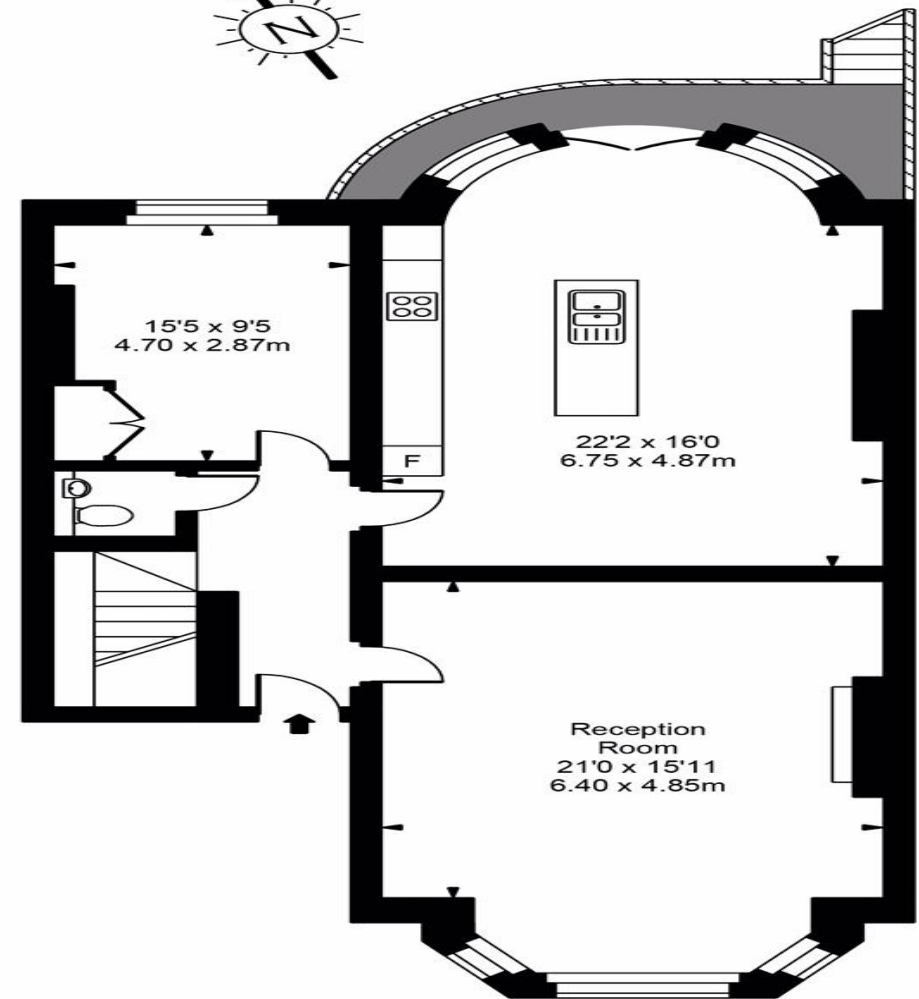
 VitaProperties

 VitaProperties

Belsize Square



Lower Ground Floor



Raised Ground Floor



Approx Gross Internal Area **2474 Sq Ft - 229.83 Sq M**

For Illustration Purposes Only - Not To Scale
Floor plan by www.bestangle.co.uk