



## Greencroft Gardens, South Hampstead, London, NW6 .| £700

- Terrace House
- Moments to Tube
- Two Bathrooms
- Wooden Floors

- Furnished or Unfurnished
- Available 28th February 2016

"Vita Properties have been tremendously helpful throughout the process of securing/renting my flat. Informative about the property, prompt communication, easy to use dashboard for sharing of information, and pleasant to work with. Highly recommend!"

---

This three bedroom two bathroom house arranged over three floors at the Finchley Road end of Greencroft Gardens.

This modern house has a number of benefits including, excellent reception area with wooden floors, doors to a decked patio garden, fully integrated modern kitchen, Three double bedrooms, two bathrooms, Balcony off main bedroom and a guest cloakroom. Ideally located for the superb amenities of Finchley Road with the station, O2 Centre and Waitrose and all the other shops and restaurants that this area has to offer.



Oliver Kent

✉ [oliver.kent@vitaproperties.uk](mailto:oliver.kent@vitaproperties.uk)  
☎ +4477 7274 0351



- 🏠 House
- 🔑 Available to Let
- 🛏 x 3
- 🛋 x 2
- 🚿 x 2



"I was very impressed with Vita and their network of buyers. When the sale of my flat fell through (twice) they worked extremely hard to find new buyers in a difficult market - thank you!"

---





"Working with Vita properties has been a smooth experience! No complaints at all. Our letting agent, Diana has been fantastic and very helpful throughout the whole process. I would highly recommend both Vita properties and Diana."

---



"I used Vita properties to find a flat recently and it was an overall professional, personalised and positive experience. Saira went the extra mile to accommodate to our needs and quick to help us whenever possible."

---



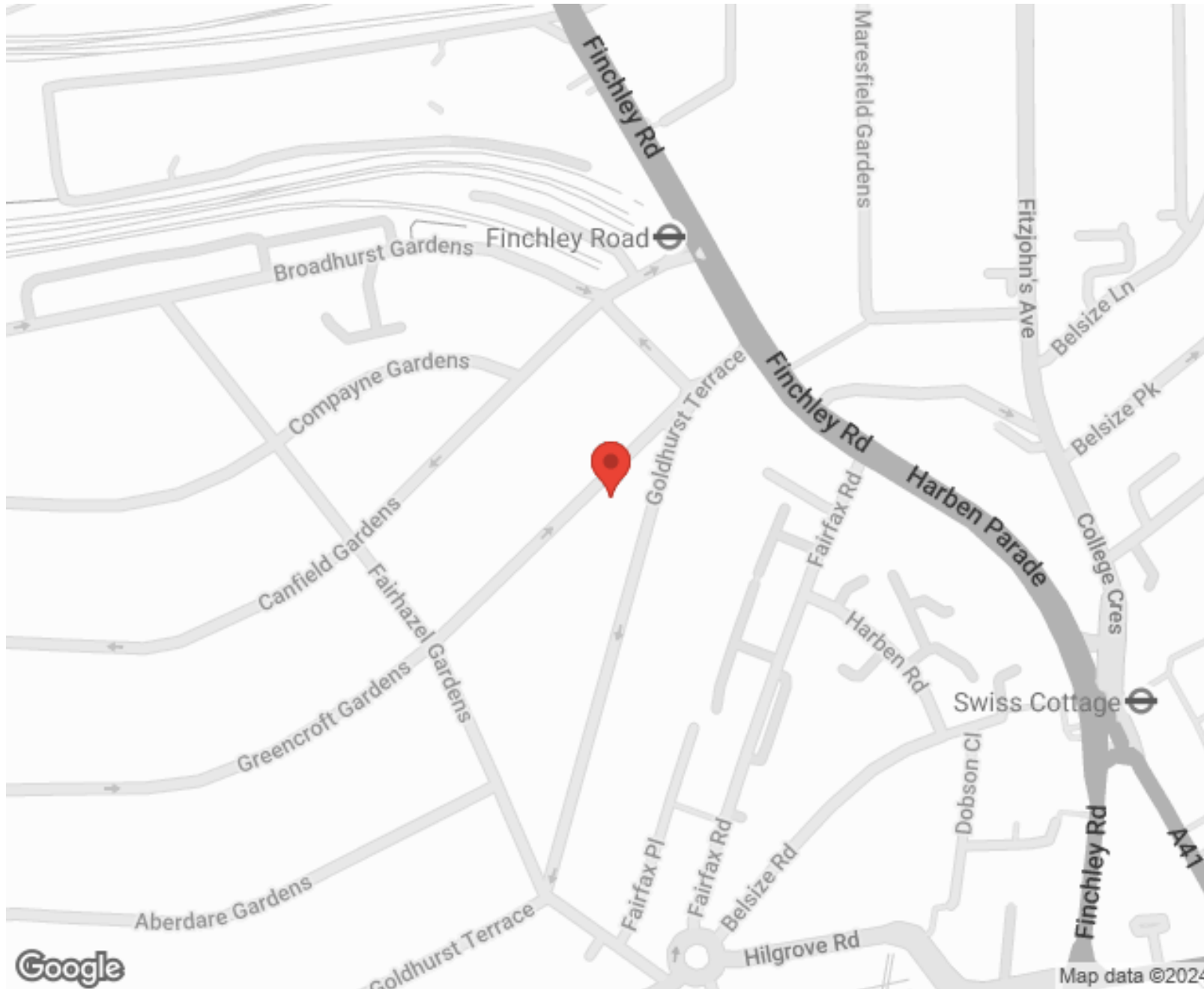
**MORE INFO, PICTURES,  
CONTACT ON  
OUR WEBSITE**





"Vita Properties is a very professional agency. My experience with them was incredible and the entire team was very helpful and kind throughout the renting process. I'd highly recommend!"

---



SCAN FOR MORE  
GOOGLE REVIEWS




Google




4.9 Stars | 132 Reviews

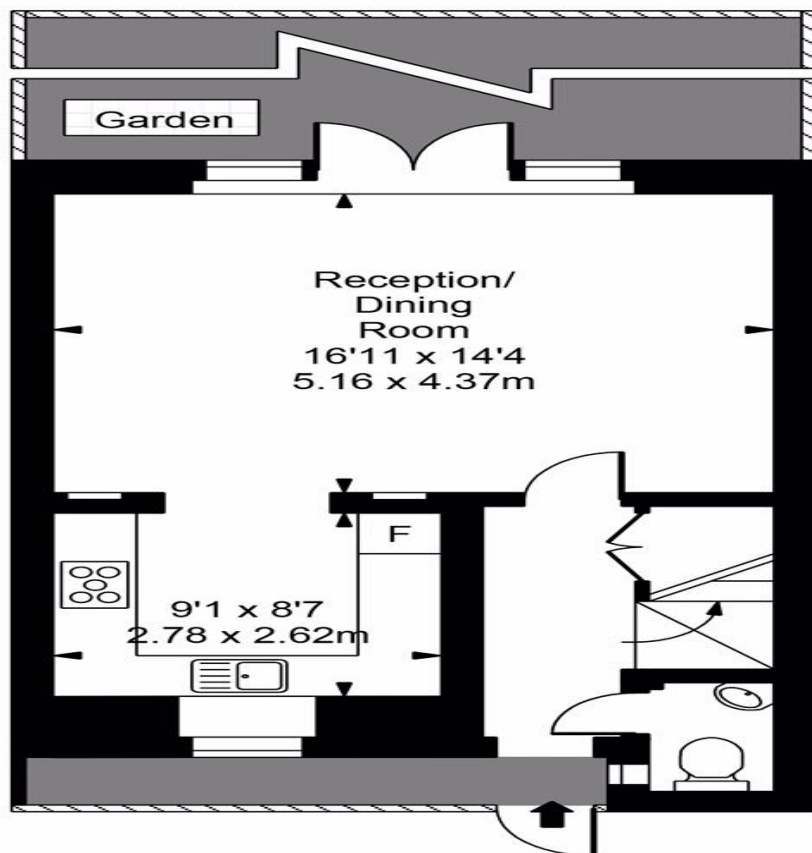
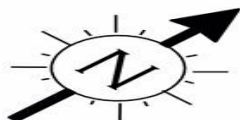
Find us on social media

 vitaproperties

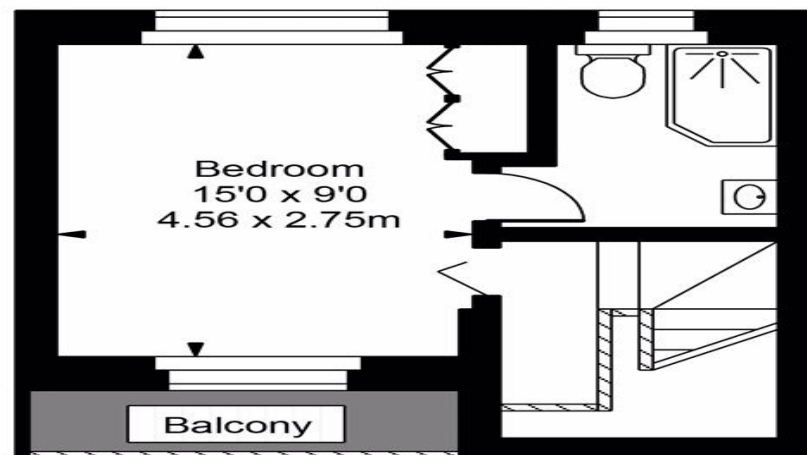
 VitaProperties

 VitaProperties

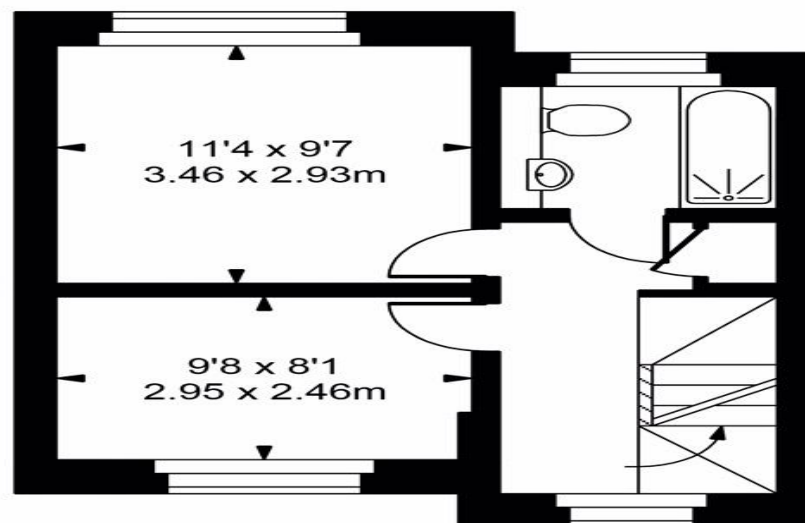
# Heath Villas



Ground Floor



Second Floor



First Floor



Approx Gross Internal Area **1056 Sq Ft - 98.10 Sq M**

For Illustration Purposes Only - Not To Scale  
Floor plan by [www.bestangle.co.uk](http://www.bestangle.co.uk)