



## Two Double Bedroom, Dartmouth Road, Mapesbury, London, NW2 .| £460

- Top Floor
- Period Conversion
- 1177 SQFT
- Modern Throughout

- Furnished
- Available 19th December

"Vita Properties have been tremendously helpful throughout the process of securing/renting my flat. Informative about the property, prompt communication, easy to use dashboard for sharing of information, and pleasant to work with. Highly recommend!"

Superb Top Floor Two Bedroom  
Period Conversion – Ultra Modern  
Interior Throughout – Two Evenly  
Sized Double Bedrooms – Great Size  
Living Space Which Is Semi Open  
Plan – A Short Walk To Both  
Willesden Green And Kilburn  
Underground Stations (Jubilee Line)  
- Offered Furnished



Oliver Kent

✉ [oliver.kent@vitaproperties.uk](mailto:oliver.kent@vitaproperties.uk)

☎ +4477 7274 0351



- 🏠 Flat
- 🔑 Available to Let
- 🛏 x 2
- 🛋 x 1
- 🚿 x 1

"I was very impressed with Vita and their network of buyers. When the sale of my flat fell through (twice) they worked extremely hard to find new buyers in a difficult market - thank you!"

---



"Working with Vita properties has been a smooth experience! No complaints at all. Our letting agent, Diana has been fantastic and very helpful throughout the whole process. I would highly recommend both Vita properties and Diana."

---



"I used Vita properties to find a flat recently and it was an overall professional, personalised and positive experience. Saira went the extra mile to accommodate to our needs and quick to help us whenever possible."

---

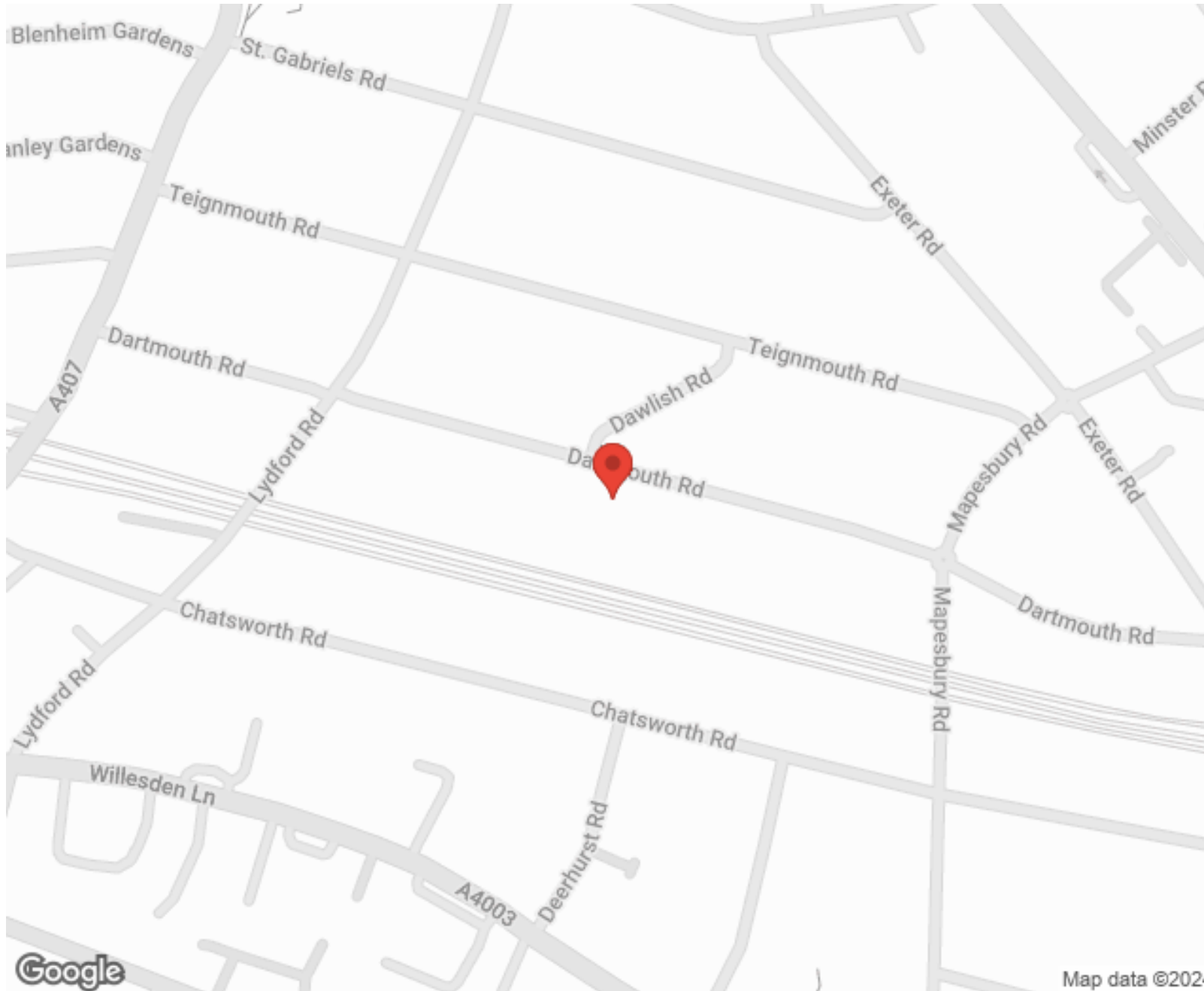


**MORE INFO, PICTURES,  
CONTACT ON  
OUR WEBSITE**



"Vita Properties is a very professional agency. My experience with them was incredible and the entire team was very helpful and kind throughout the renting process. I'd highly recommend!"

---



SCAN FOR MORE  
GOOGLE REVIEWS



Google



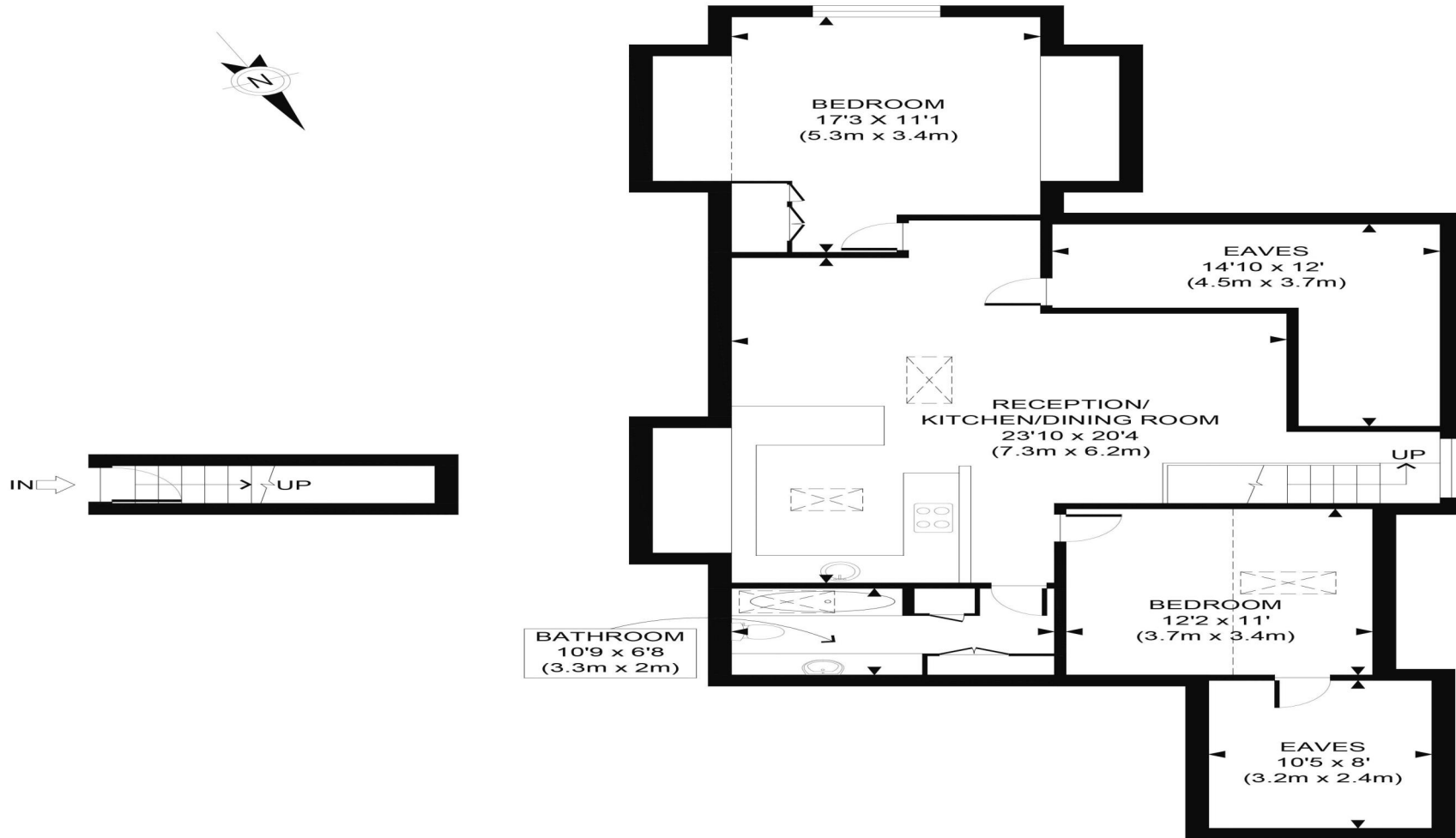
4.9 Stars | 132 Reviews

Find us on social media

 vitaproperties

 VitaProperties

 VitaProperties



FIRST FLOOR  
GROSS INTERNAL  
FLOOR AREA 32 SQ FT

SECOND FLOOR  
GROSS INTERNAL  
FLOOR AREA 1145 SQ FT

APPROX. GROSS INTERNAL FLOOR AREA WITH EAVES 1177 SQ FT / 109 SQM  
APPROX. GROSS INTERNAL FLOOR AREA WITHOUT EAVES 946 SQ FT / 88 SQM

Ref: Copyright **photoplan**

Disclaimer: Floor plan measurements are approximate and are for illustrative purposes only. While we do not doubt the floor plan accuracy and completeness, you or your advisors should conduct a careful, independent investigation of the property in respect of monetary valuation