



One Bedroom Apartment, Allitsen Road, St Johns Wood, NW8 .| £450

- One Bedroom Apartment
- Newly Referbished
- Central St Johns Wood
- Modern Kitchen and Bathroom

- Furnished
- Available Now

"Vita Properties have been tremendously helpful throughout the process of securing/renting my flat. Informative about the property, prompt communication, easy to use dashboard for sharing of information, and pleasant to work with. Highly recommend!"

Brand New to Market and perfect for single professional – Modern One Bedroom Apartment - Newly refurbished - Private Kitchen - Private Bathroom – Property supplied Furnished – Central St.

Johns Wood Location - Available Now – Must Call For Viewings



Oliver Kent

✉ oliver.kent@vitaproperties.uk

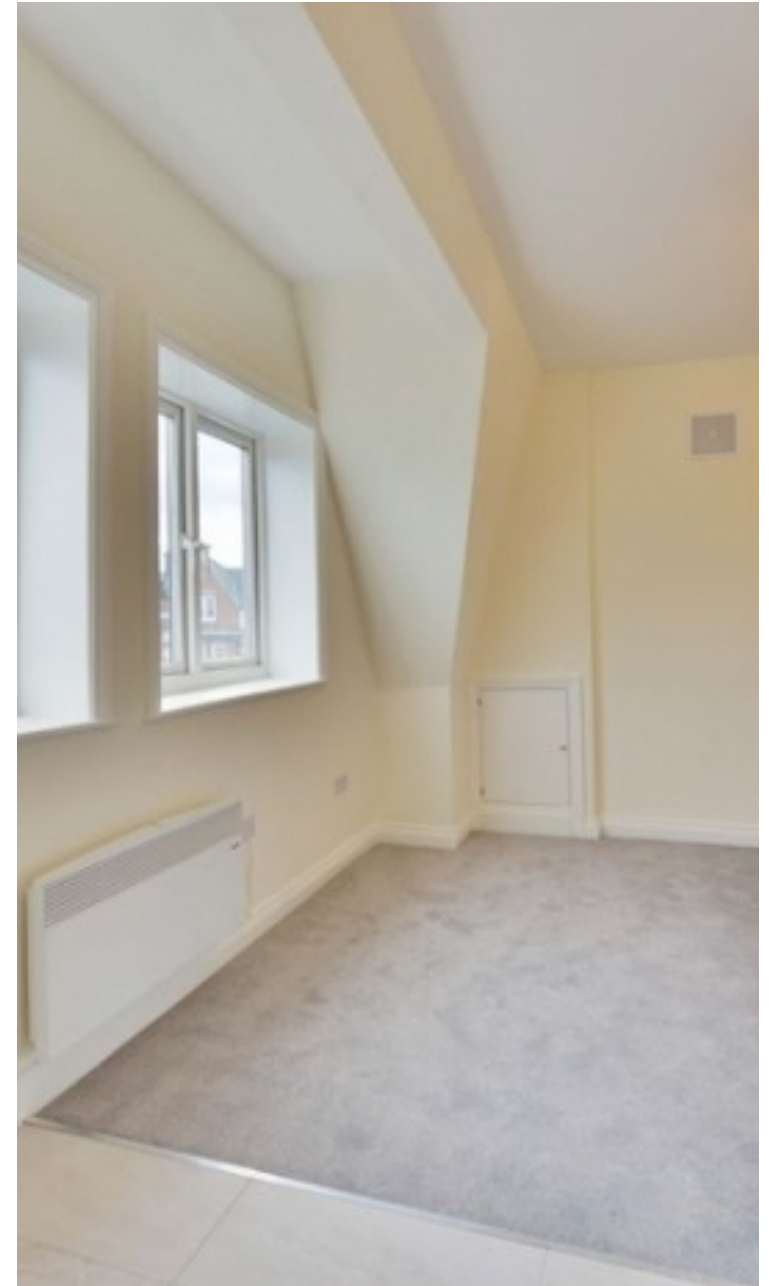
☎ +4477 7274 0351



🏠	Flat
🔑	Available to Let
🛏️	x 1
🚿	x 1
🚰	x 1



"I was very impressed with Vita and their network of buyers. When the sale of my flat fell through (twice) they worked extremely hard to find new buyers in a difficult market - thank you!"



"Working with Vita properties has been a smooth experience! No complaints at all. Our letting agent, Diana has been fantastic and very helpful throughout the whole process. I would highly recommend both Vita properties and Diana."



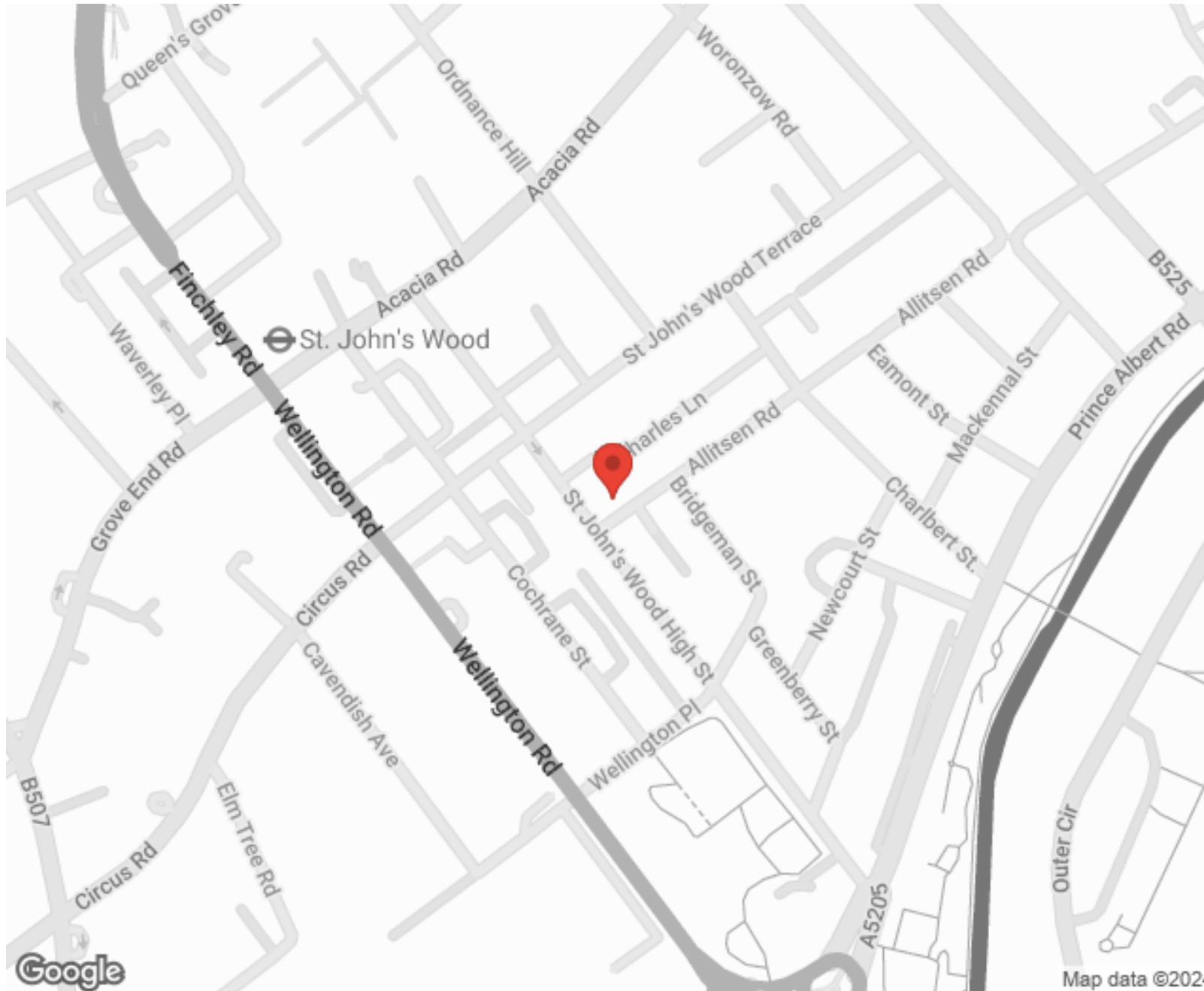
"I used Vita properties to find a flat recently and it was an overall professional, personalised and positive experience. Saira went the extra mile to accommodate to our needs and quick to help us whenever possible."



**MORE INFO, PICTURES,
CONTACT ON
OUR WEBSITE**



"Vita Properties is a very professional agency. My experience with them was incredible and the entire team was very helpful and kind throughout the renting process. I'd highly recommend!"



SCAN FOR MORE
GOOGLE REVIEWS






Google

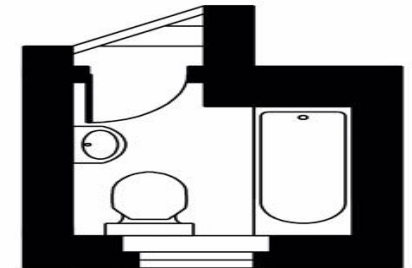
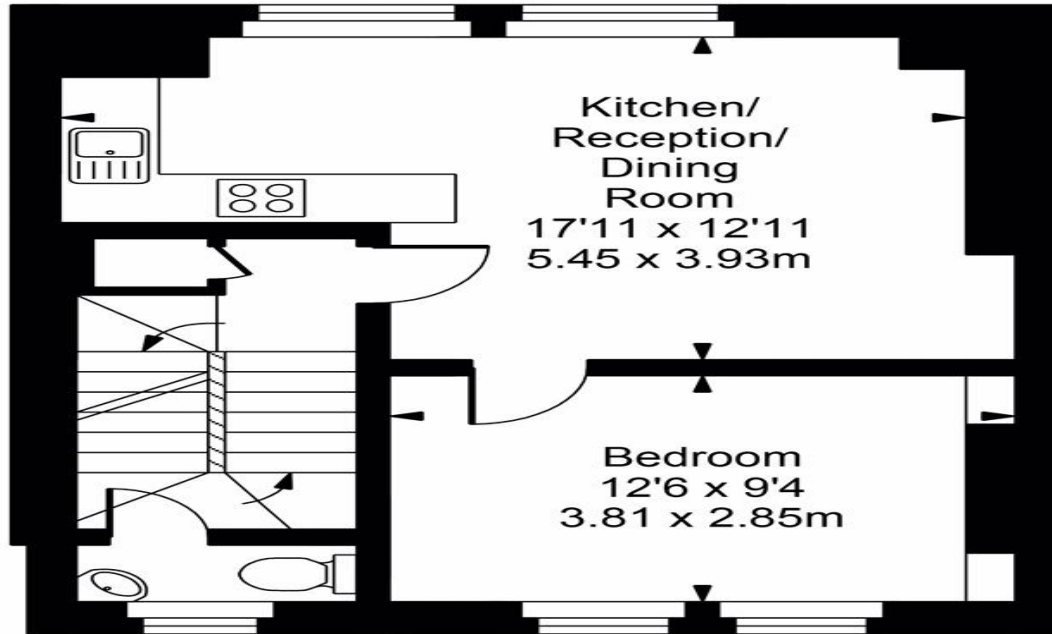
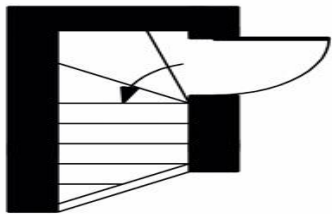


4.9 Stars | 132 Reviews

Find us on social media

-  vitaproperties
-  VitaProperties
-  VitaProperties

Allitsen Road



First Floor

Second Floor

Third Floor



Approx Gross Internal Area **478 Sq Ft - 44.40 Sq M**

For Illustration Purposes Only - Not To Scale
Floor plan by www.bestangle.co.uk