



Yale Court, Honeybourne Road, West Hampstead, NW6 .| £475

- One Bedroom with a study
- Mansion apartment
- Located in the heart of West Hampstead
- Portered Block

- Available immediately

"Vita Properties have been tremendously helpful throughout the process of securing/renting my flat. Informative about the property, prompt communication, easy to use dashboard for sharing of information, and pleasant to work with. Highly recommend!"

An immaculate one bedroom apartment with a study set over 706 sq ft on the ground floor of this prestigious mansion building located in the heart of West Hampstead. The apartment comprises a large reception room, fully fitted kitchen, dining room, double bedroom and a bathroom.

The property further benefits from wooden floors throughout, high ceilings, feature fireplaces in the reception and the bedroom and is well located for easy access to shops and cafes and a 5 minutes walk to West Hampstead Thameslink, (Silverlink) Underground Stations (Jubilee Line) and Overground Stations.



Oliver Kent

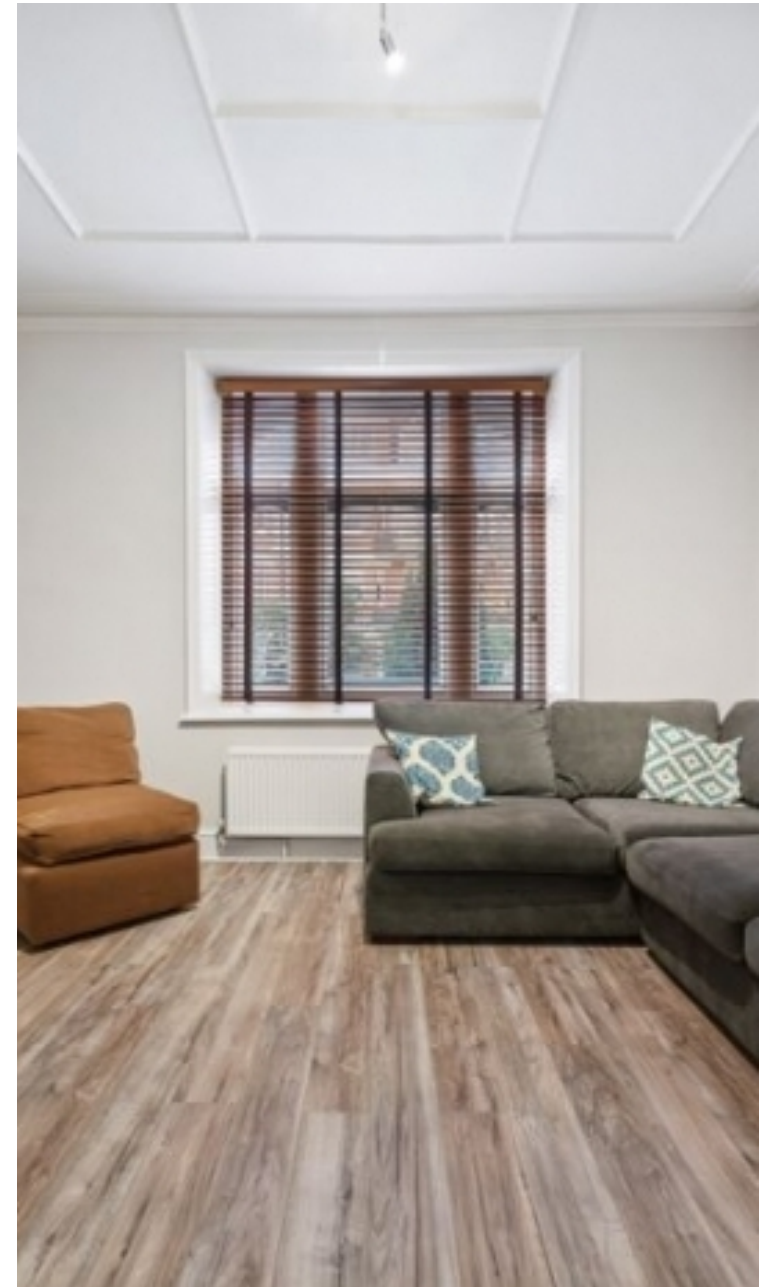
✉ oliver.kent@vitaproperties.uk
☎ +4477 7274 0351



🏠 Flat
🔑 Under
Negotiation
🛋️ x 2
📺 x 1
🔌 x 1

SCAN FOR
A VIDEO
WALKTHROUGH

"I was very impressed with Vita and their network of buyers. When the sale of my flat fell through (twice) they worked extremely hard to find new buyers in a difficult market - thank you!"



"Working with Vita properties has been a smooth experience! No complaints at all. Our letting agent, Diana has been fantastic and very helpful throughout the whole process. I would highly recommend both Vita properties and Diana."



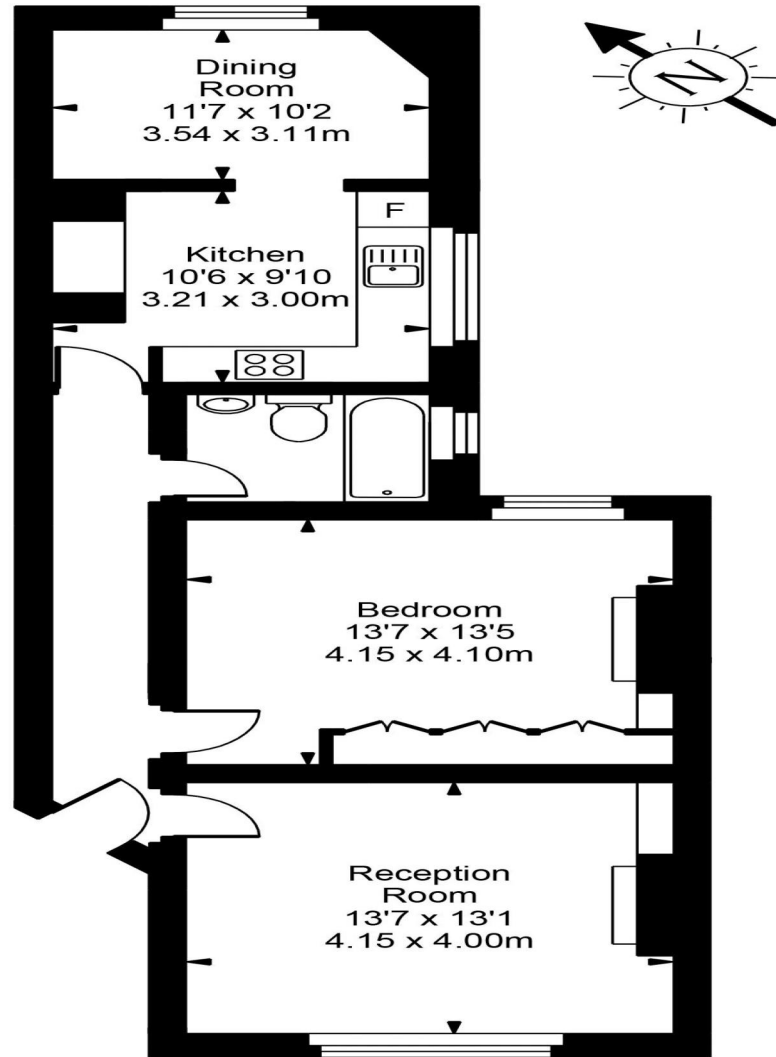
"I used Vita properties to find a flat recently and it was an overall professional, personalised and positive experience. Saira went the extra mile to accommodate to our needs and quick to help us whenever possible."



**MORE INFO, PICTURES,
CONTACT ON
OUR WEBSITE**



Yale Court



Ground Floor



Approx Gross Internal Area **706 Sq Ft - 65.58 Sq M**

For Illustration Purposes Only - Not To Scale
Floor plan by www.bestangle.co.uk