



Platts Lane, Hampstead, London, NW3 .| £650

- Close to Local Amenities
- Moments to Hampstead Heath
- 2 Bathroom
- Available immediately

- Unfurnished

"Vita Properties have been tremendously helpful throughout the process of securing/renting my flat. Informative about the property, prompt communication, easy to use dashboard for sharing of information, and pleasant to work with. Highly recommend!"

A three bedroom ground floor apartment in a period conversion - Private west facing garden- Parking for 2 cars - Own entrance - Two bathrooms - Close to Hampstead Heath and the transport links of Finchley Road - Available immediately and offered unfurnished



Oliver Kent

✉ oliver.kent@vitaproperties.uk

☎ +4477 7274 0351



🏠 Flat
🔑 Available
to Let
🛏 x 3
🚿 x 1
🚽 x 2



"I was very impressed with Vita and their network of buyers. When the sale of my flat fell through (twice) they worked extremely hard to find new buyers in a difficult market - thank you!"



"Working with Vita properties has been a smooth experience! No complaints at all. Our letting agent, Diana has been fantastic and very helpful throughout the whole process. I would highly recommend both Vita properties and Diana."



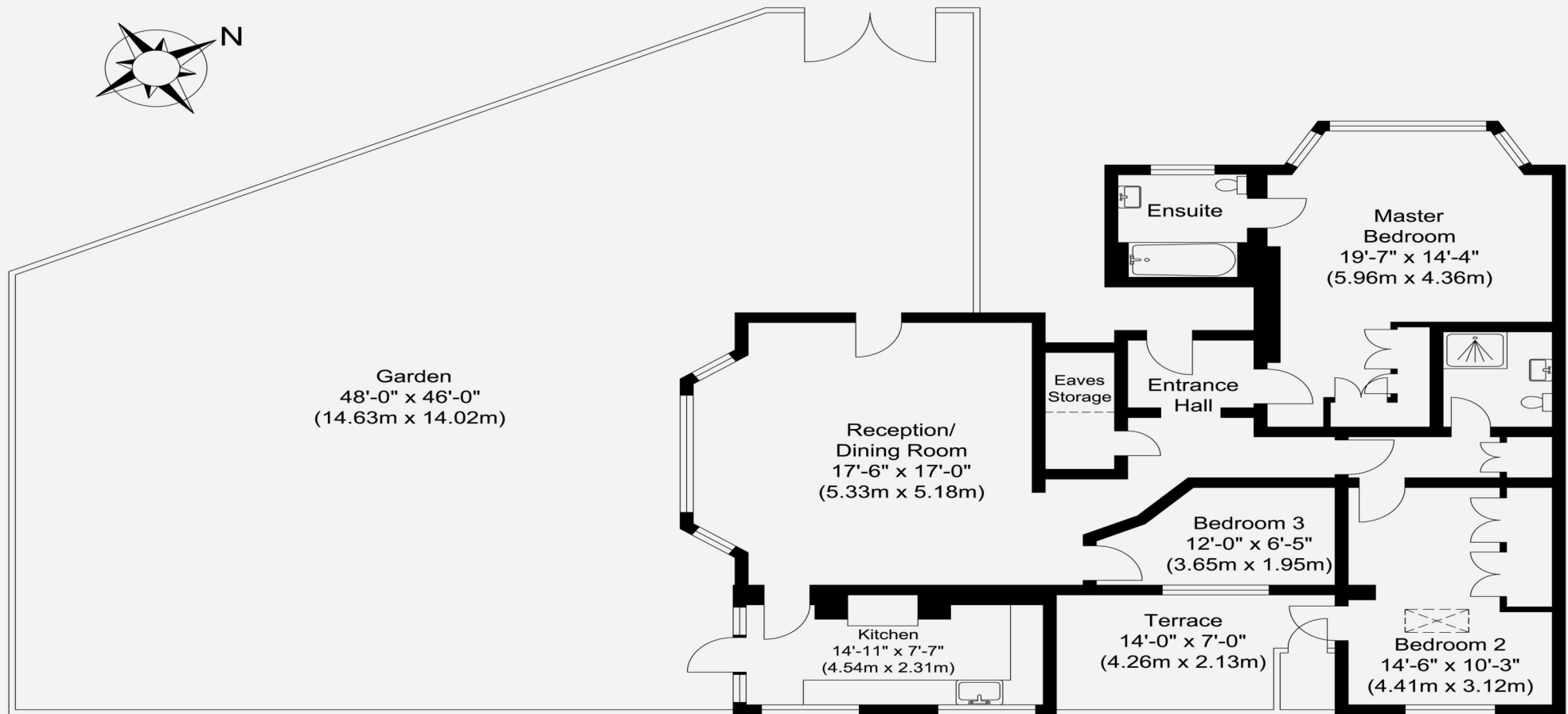
"I used Vita properties to find a flat recently and it was an overall professional, personalised and positive experience. Saira went the extra mile to accommodate to our needs and quick to help us whenever possible."



**MORE INFO, PICTURES,
CONTACT ON
OUR WEBSITE**



Platts Lane, NW3



Ground Floor
Approximate Floor Area
1109 sq. ft.
(103 sq. m)

TOTAL APPROX FLOOR AREA 1109 SQ. FT. (AREA 103 SQ. M)

Whilst every attempt has been made to ensure the accuracy of the floor plan contained here, measurements of doors, windows, rooms and any other items are approximate and no responsibility is taken for any error, omission or mis-statement. This plan is for illustrative purposes only and should be used as such by any prospective purchaser.